

# Rub User's manual

Claus Ilginnis

February 23, 2011



# Contents

<b>1</b>	<b>Basics</b>	<b>5</b>
1.1	About . . . . .	5
1.2	License . . . . .	5
1.3	Download . . . . .	6
1.4	Installation Procedure . . . . .	6
<b>2</b>	<b>Getting started</b>	<b>7</b>
2.1	Start Rub . . . . .	7
2.2	Import a feed with Firefox . . . . .	8
<b>3</b>	<b>Daily Use</b>	<b>11</b>
<b>4</b>	<b>Advanced Usage</b>	<b>13</b>



# Chapter 1

## Basics

### 1.1 About

Rub is designed to supply you instantly with the latest news. It is also designed to be silent and stay in background unless new news are available. So if you think rub is not working, there may be only no news.

### 1.2 License

Rub is licensed under the following terms:

```
Copyright 2011 Claus Ilginnis <Claus@Ilginnis.de>
```

```
Licensed under the Apache License, Version 2.0  
(the "License"); you may not use this  
file except in compliance with the License.  
You may obtain a copy of the License at
```

```
http://www.apache.org/licenses/LICENSE-2.0
```

```
Unless required by applicable law or agreed to in  
writing, software distributed under the License is  
distributed on an "AS IS" BASIS,
```

```
WITHOUT WARRANTIES OR CONDITIONS OF ANY KIND,
```

```
either express or implied.
```

```
See the License for the specific language  
governing permissions and limitations under the License.
```

## 1.3 Download

You can download Rub from

- <http://www.Ilginnis.de>
- <http://qt-apps.org>
- <http://sourceforge.net>

## 1.4 Installation Procedure

This section shows you how to install Rub on you operating system.

**On Windows** download and start the Windows installer. The Windows installer has the file extension EXE

**On Debian based systems** the easiest thing to do is open the file with gdebi. (If it is not already installed, install it with 'sudo apt-get install gdebi')

**On System using Red Hat Package Manager** I don't know

**By Source** go to the source dir and type 'qmake', 'make', 'make install'

## Chapter 2

# Getting started

### 2.1 Start Rub

Start Rub through the start menu entry.

#### Note on the very first start

On some systems Rub may show up an error, on the very first start. It will complain about the missing config file. But you can ignore that.

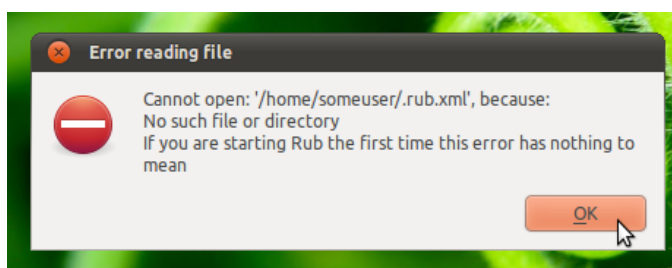


Figure 2.1: Ignore this

If correctly installed, the Rub icon will show up in the notification or tray area of your desktop.



Figure 2.2: Rub's tray icon showing up

When you installed Rub the first time, no feed is configured and therefore no messages will be displayed. So we have to add some feeds now.

The following example is based on **Firefox**, but should be nearly the same on other browsers.

## 2.2 Import a feed with Firefox

Start Firefox and open your favorite site. If you see an RSS Icon in the address bar, the site supports RSS, otherwise you have to look on.

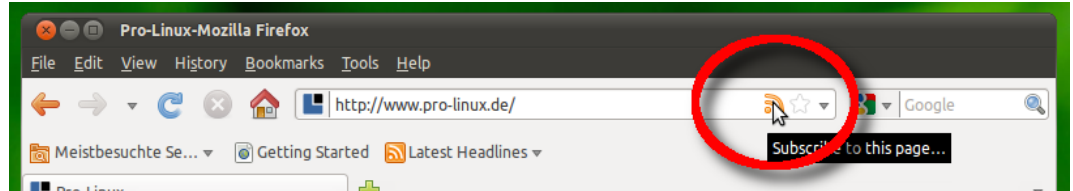


Figure 2.3: The RSS feed icon in Firefox

If you click on the RSS icon the feed content site will open. Now tell Firefox to open the feed with 'Rub Importer'.

**On Windows** Rub importer lies in Rub's programs folder

**On \*nix Systems** typically it's in the '/usr/bin' directory

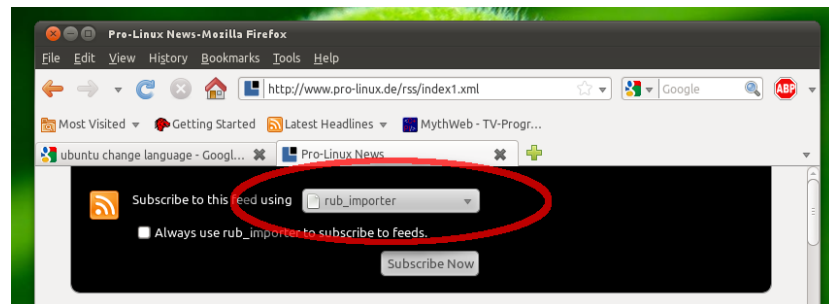


Figure 2.4: Using Rub Importer

After you pressed import, Rub's import dialog will appear with the corresponding link.

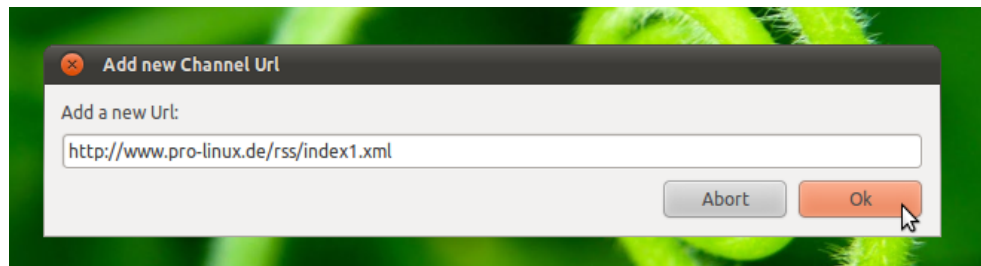


Figure 2.5: Rub's import dialog



Click ok to import the link. After downloading the link, Rub will ensure the correct settings by showing this dialog.

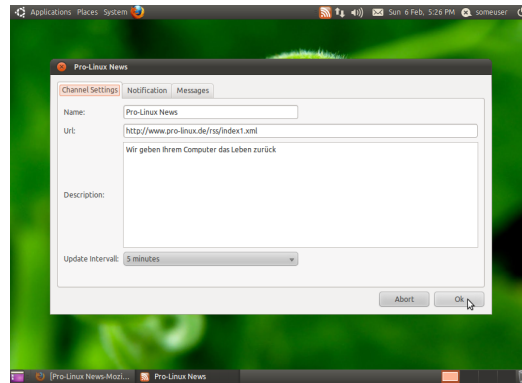


Figure 2.6: Rub's acknowledge dialog

Press ok and the new feed is added to Rub.



## Chapter 3

# Daily Use

Rub is intended to show you only the news you want. Therefore Rub has notification matrix, which allows you to filter incoming messages. The notification matrix is based on different *notifications*. Each notification is proofed if it matches a message. If so this notification is executed. What is very important, is to note that only one – the first notification is executed. You can choose an action when matching, or nothing to ignore the message.

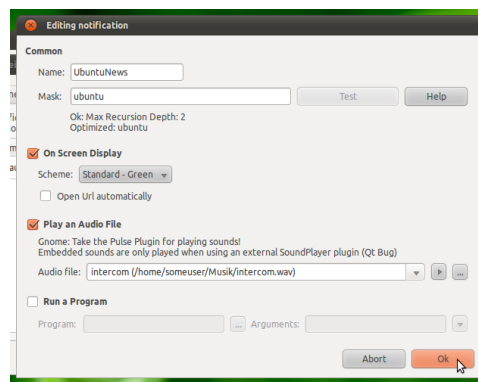


Figure 3.1: Rub's notification dialog



## **Chapter 4**

# **Advanced Usage**

TODO