

SKP16C62P

Tutorial 2

Creating A New Project

Using HEW

Overview

This tutorial describes the steps in creating new projects for the M16C using two different methods.

The first method uses the SKP project generator, that will create an empty project.

The second method will provide step by step instructions on creating a project with existing source files.

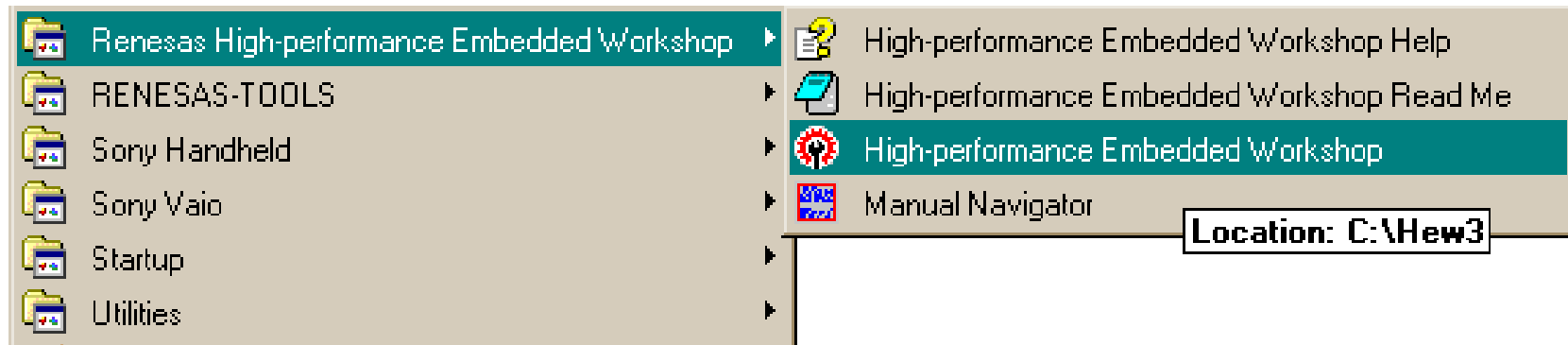
To get the most out of the SKP including the development tools, check out the references at the end of this tutorial.

Note: *This tutorial assumes the user has done the following:*

1. *Followed the 'Quickstart Guide'*
2. *Installed the SKP files, examples, and software tools in the default directories.*
3. *Reviewed Tutorial 1.*

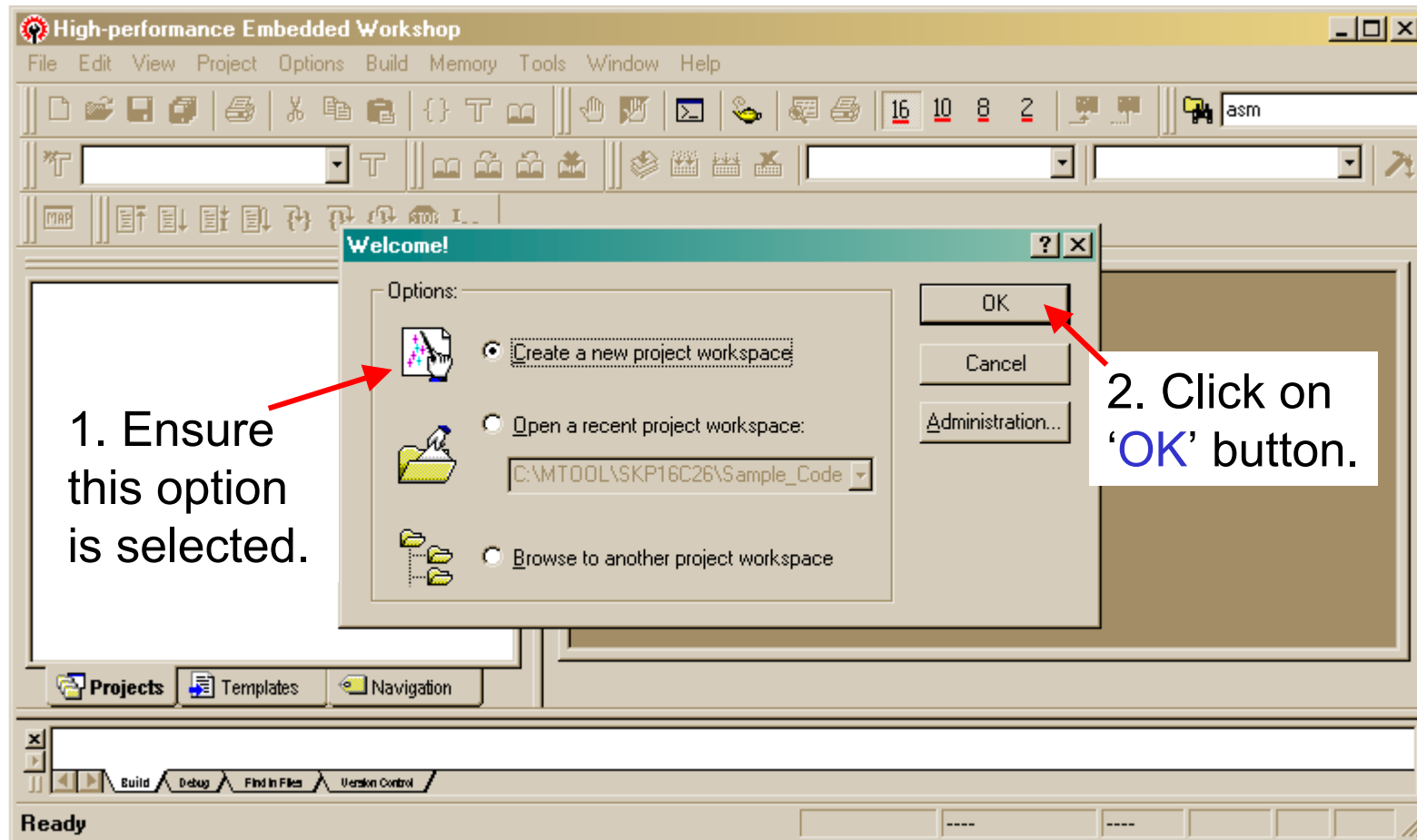


Start HEW



From the Windows Start menu, click on
**Programs > Renesas High-performance Embedded Workshop>
High-performance Embedded Workshop**

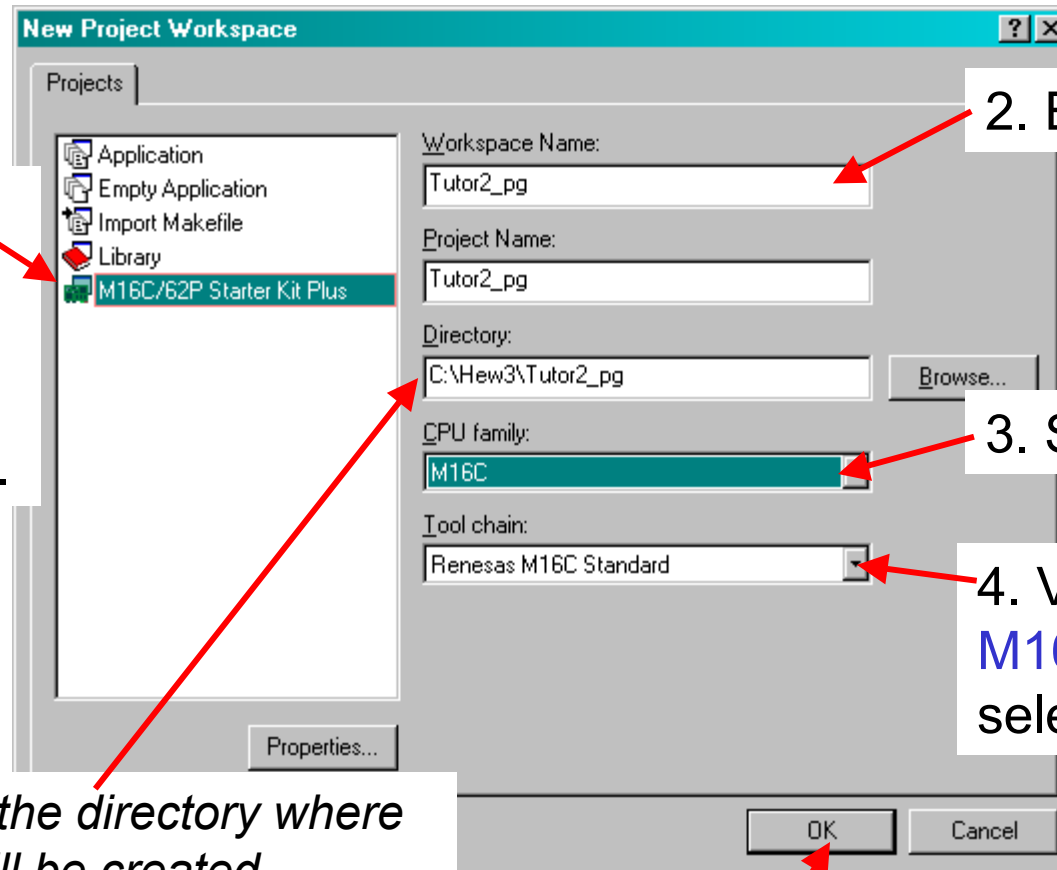
HEW



When HEW starts up, you will be prompted to select a workspace. By default, 'Create a new project workspace' option is selected.

Creating a New Project with the SKP project generator (1/4)

1. Select 'M16C/62P Starter Kit Plus' as the project type.



2. Enter 'Tutor2_pg'.

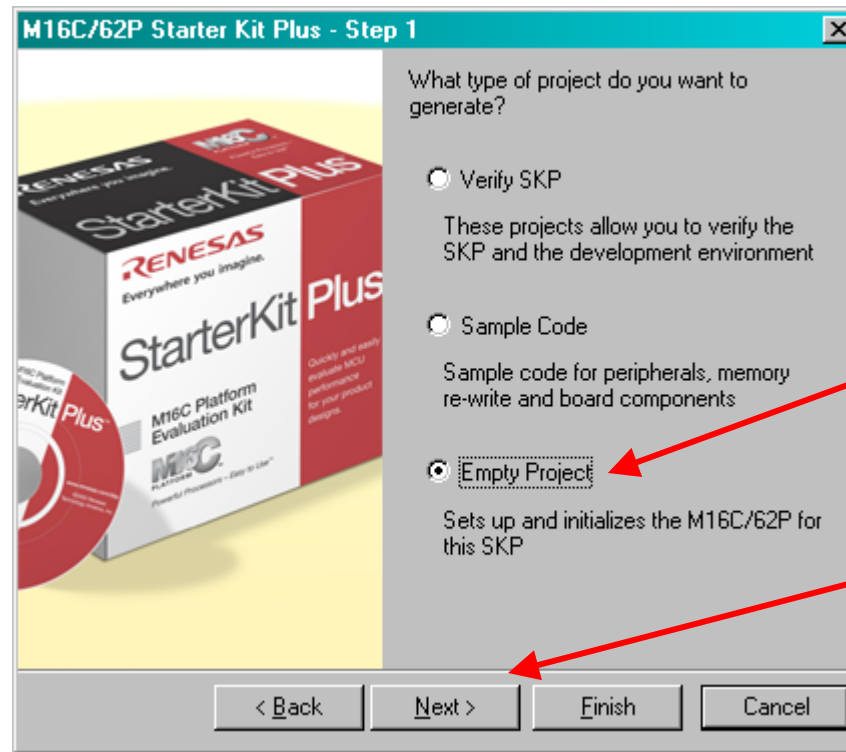
3. Select M16C.

4. Verify Renesas M16C Standard is selected.

Note: This is the directory where the project will be created, 'C:\HEW3\Tutor2_pg'.

5. Click on 'OK' button.

Creating a New Project with the SKP project generator (2/4)

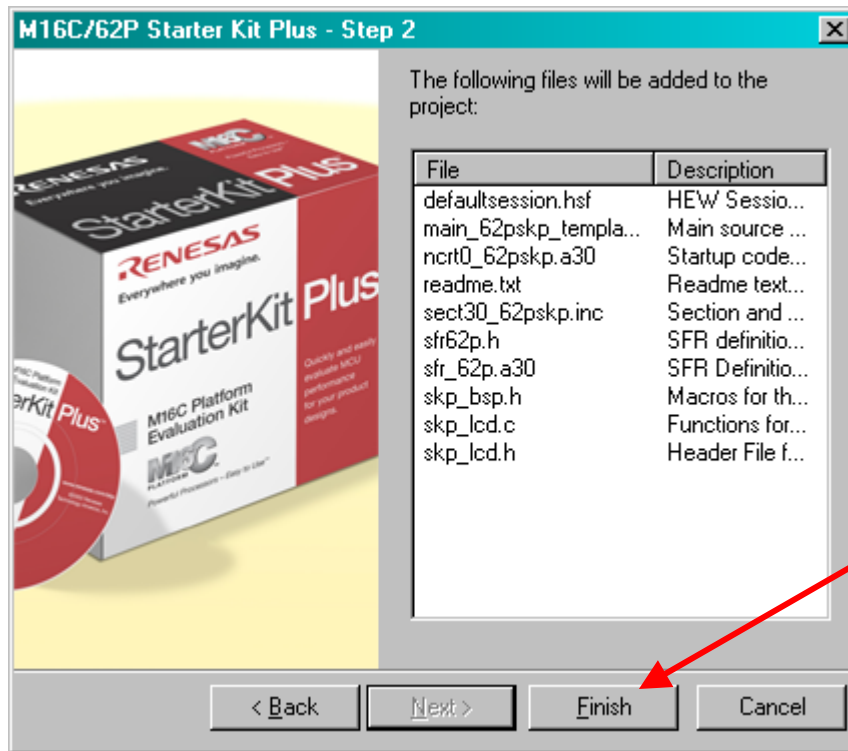


1. Select 'Empty Project'.

2. Click on 'Next' button.

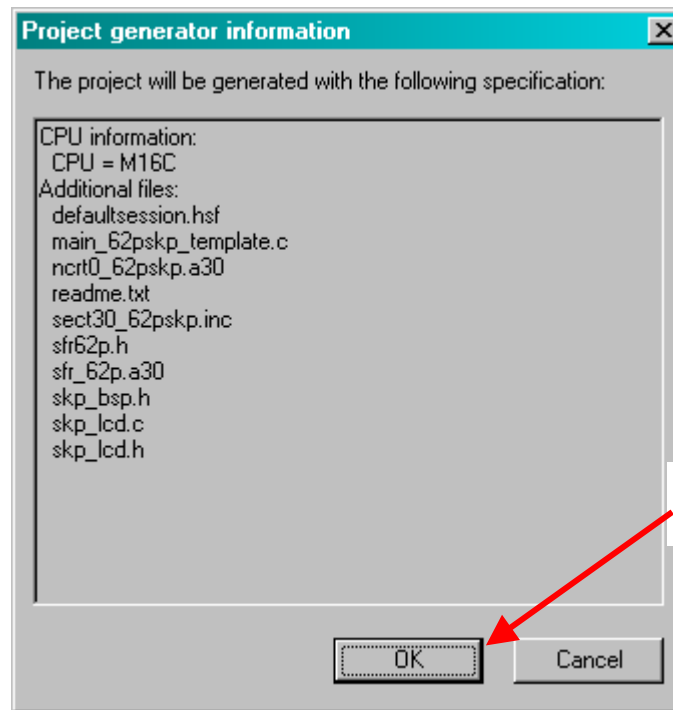
Note: The other project selections (Verify SKP and Sample Code) allow you to test the SKP and evaluate the MCU peripherals and features using pre-built sample code.

Creating a New Project with the SKP project generator (3/4)



Note: Step 2 shows all the files that will be added to the new project and their description.

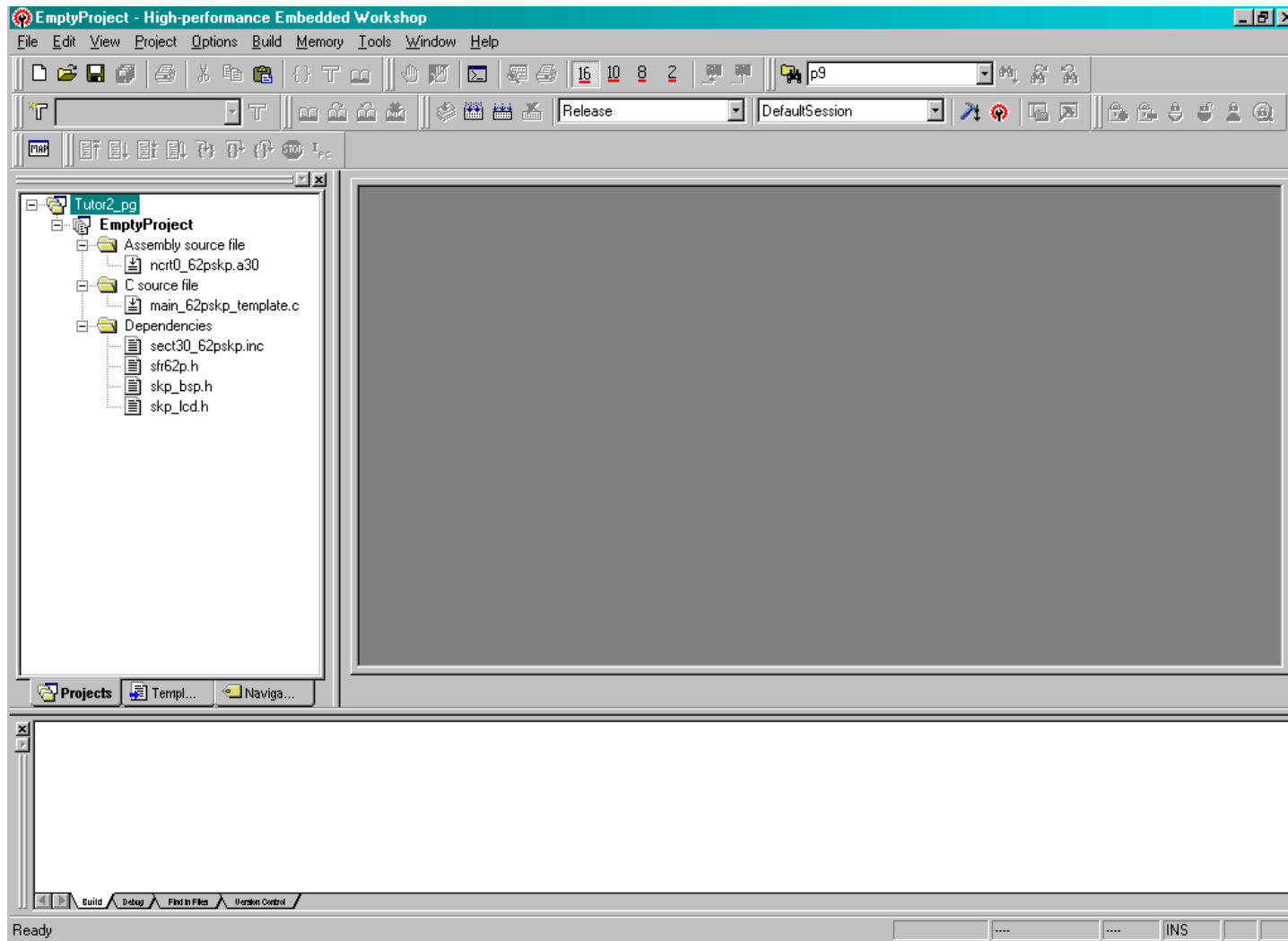
Creating a New Project with the SKP project generator (4/4)



1. Click on 'OK' button.

The project generator information is shown once the project has been created.

HEW after Creating a New Project using the SKP project generator



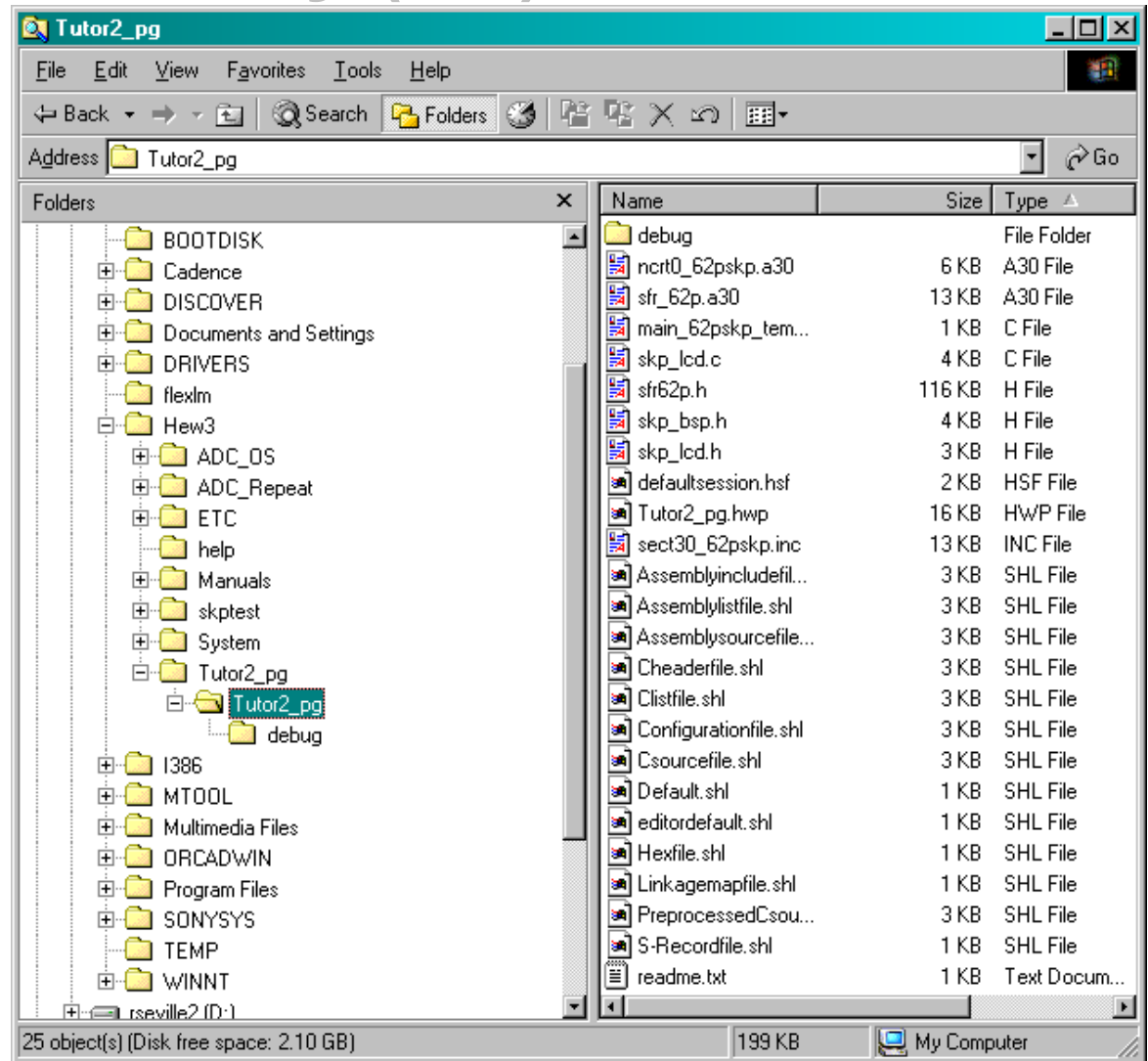
SKP project generator Summary (1/2)

The following is a summary of what happens when creating a new project using the SKP project generator Empty Project:

1. The following files are created in the workspace or project directory (in this example, under C:\Hew3\Tutor2_pg):
 - A copy of the user startup ([ncrt0_62pskp.a30](#) and [sect30_62pskp.inc](#)) files.
 - A .c file ([main_62pskp_template.c](#)) that contains the main function.
 - Copies of the SKP header files ([sfr62p.h](#), [skp_bsp.h](#), and [skp_lcd.h](#)) included in the .c file.
 - A copy of the [sfr_62p.a30](#) file so SFR labels are visible in KD30.
2. Links the startup files first as shown in the “Linking the startup files first” slides (slides 25 & 26).
3. Configures the external debugger to launch KD30 as shown in the “Launching KD30 from HEW” slide (slide 28).
4. Adds the phase to generate a hex file when building a project as shown in the slide “Generate a hex file for the Programmer” (slide 29).

SKP project generator Summary (2/2)

The project structure and files created when using the SKP project generator are shown here.



Creating a New Project Environment

The SKP project generator simplifies several steps in creating a new project but what if you already have source files? The following slides will walk you through the following:

- Creating a new workspace from scratch
- Adding source files
- Setting up the software development environment including linker, build, debugger, and programming configuration.



Creating a New Project (1/8)

Select 'New Workspace' from the File menu...

1. Select 'Application'.

2. Browse to, or enter, 'C:\MTOOL\SKP16C62P\Sample_Code'.

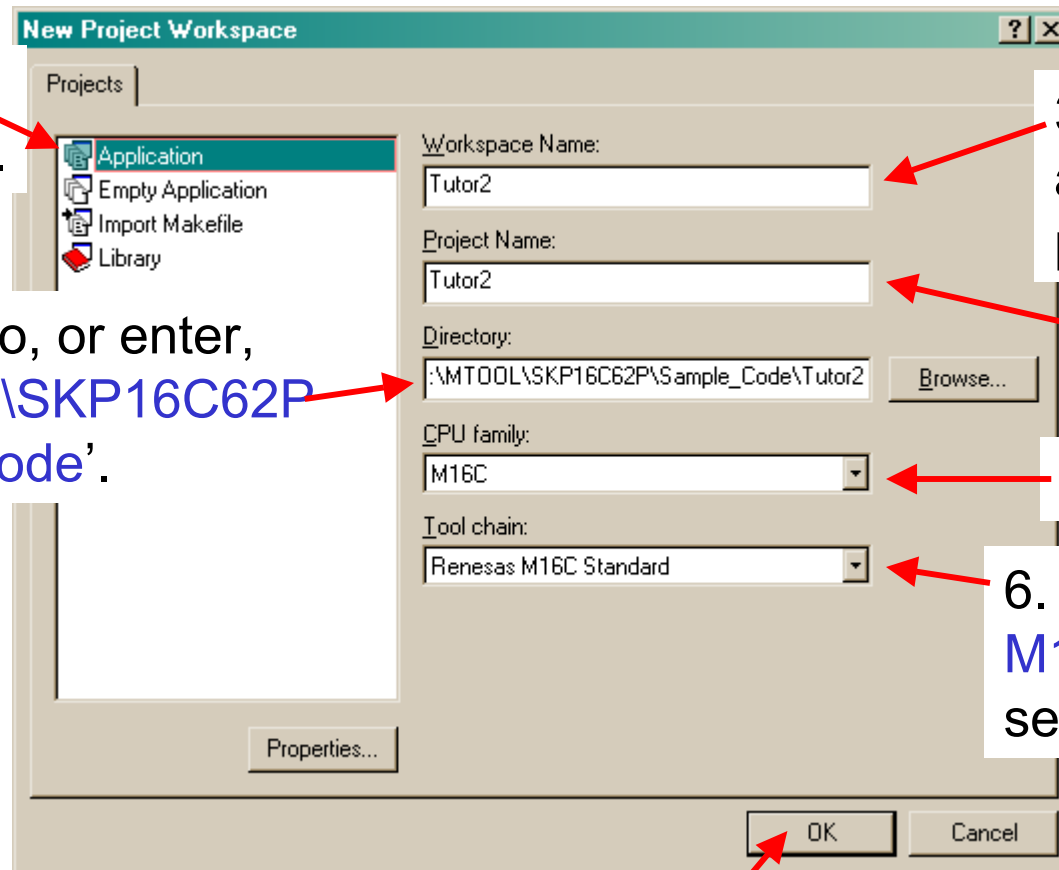
3. Enter 'Tutor2' as name of the project.

4. Leave as is (i.e. 'Tutor2').

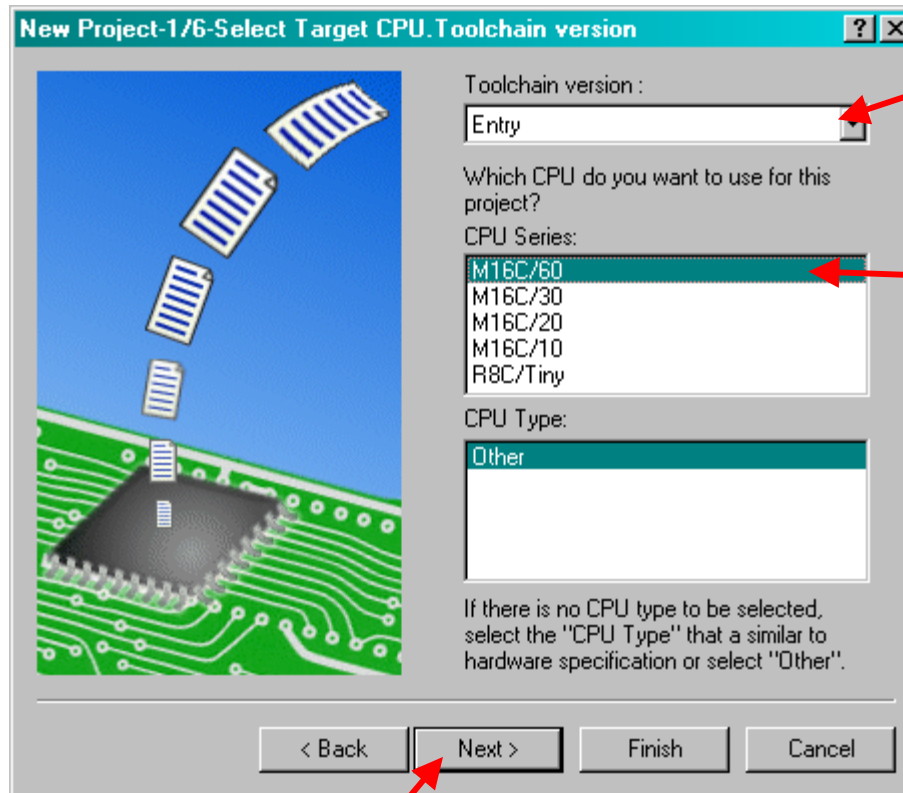
5. Select M16C.

6. Select Renesas M16C Standard is selected.

7. Click on 'OK' button.



Creating a New Project (2/8)

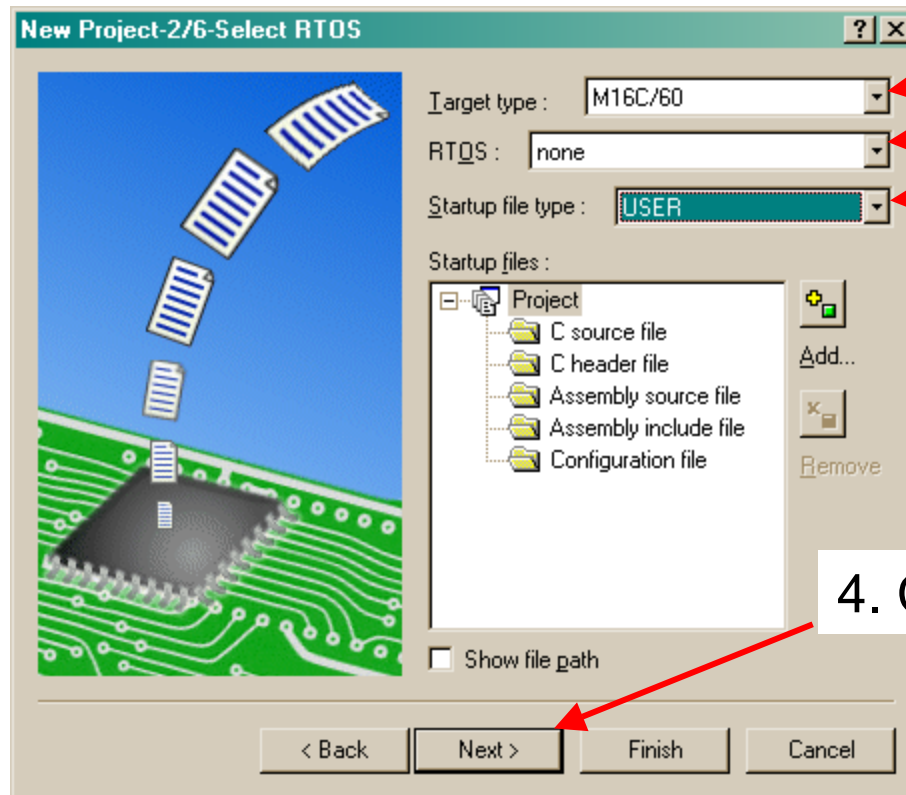


1. Leave as is.

2. Select
'M16C/60'.

3. Click on 'Next' button.

Creating a New Project (3/8)

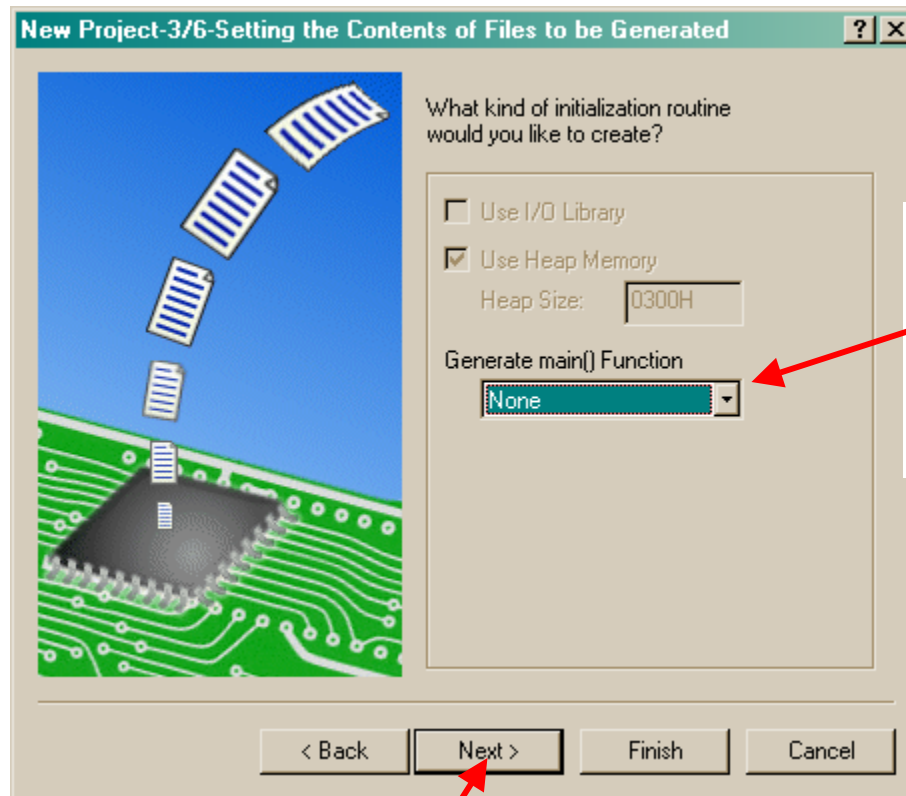


1. Select 'M16C/60'.
2. Leave as is.
3. Select 'USER'.

4. Click on 'Next' button.

Note: 1. Differences between Default and USER Startup files is discussed after the project is created.

Creating a New Project (4/8)

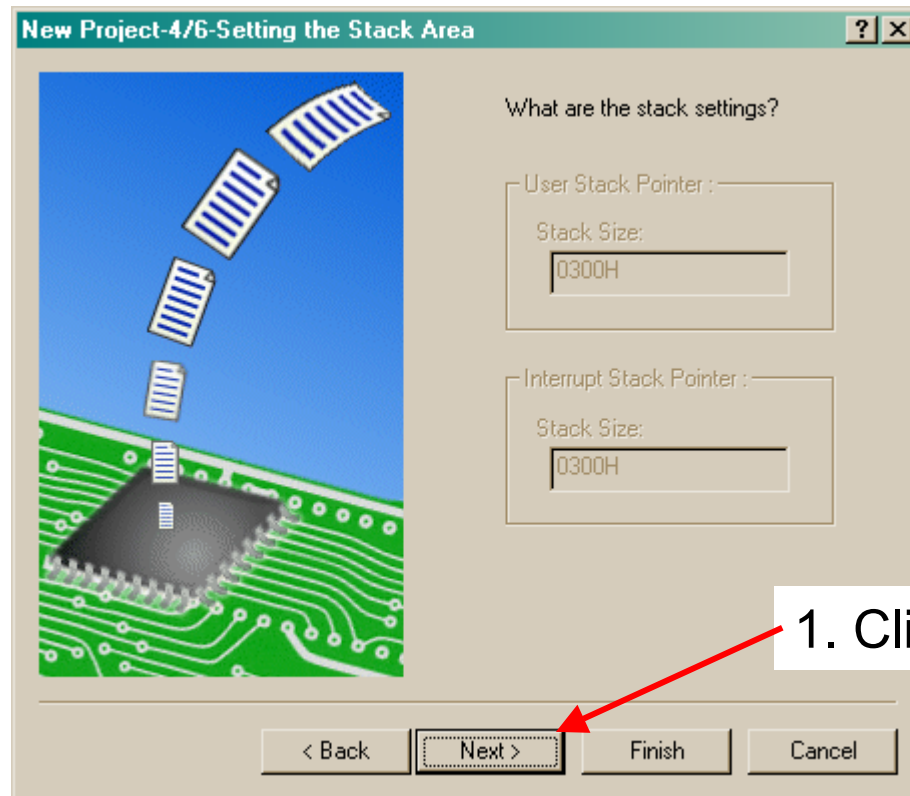


1. Select 'None' as we already have a file with the main() function.

2. Click on 'Next' button.

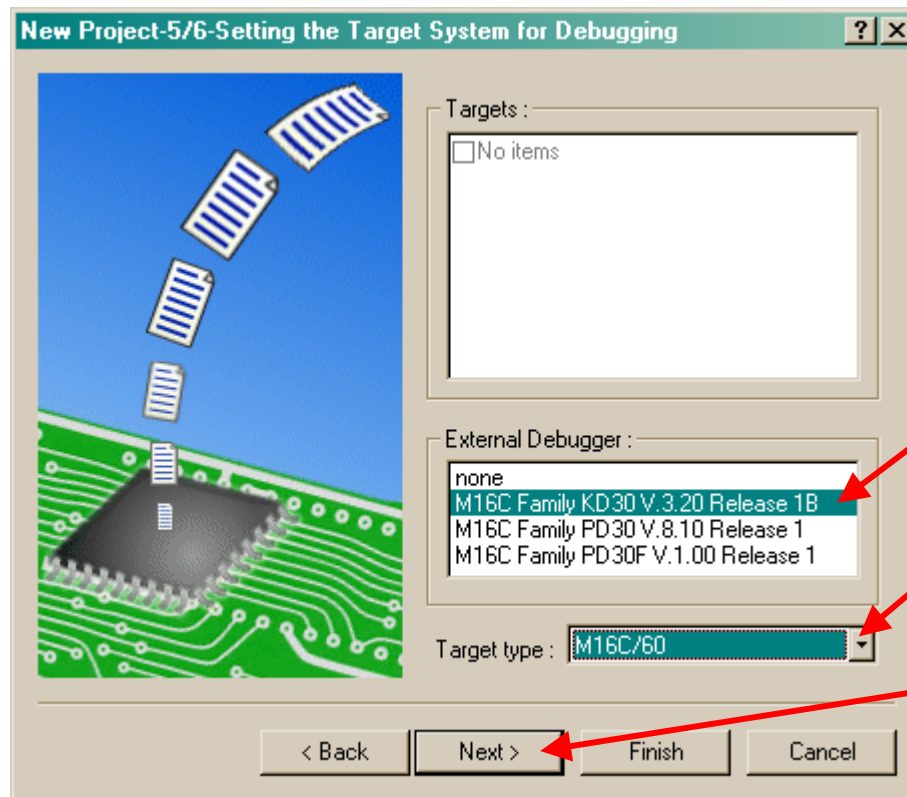
Creating a New Project (5/8)

The stack settings are grayed out because USER startup file was selected (see Creating a New Project 3/8). If DEFAULT startup file was selected, these settings become available.



1. Click on 'Next' button.

Creating a New Project (6/8)



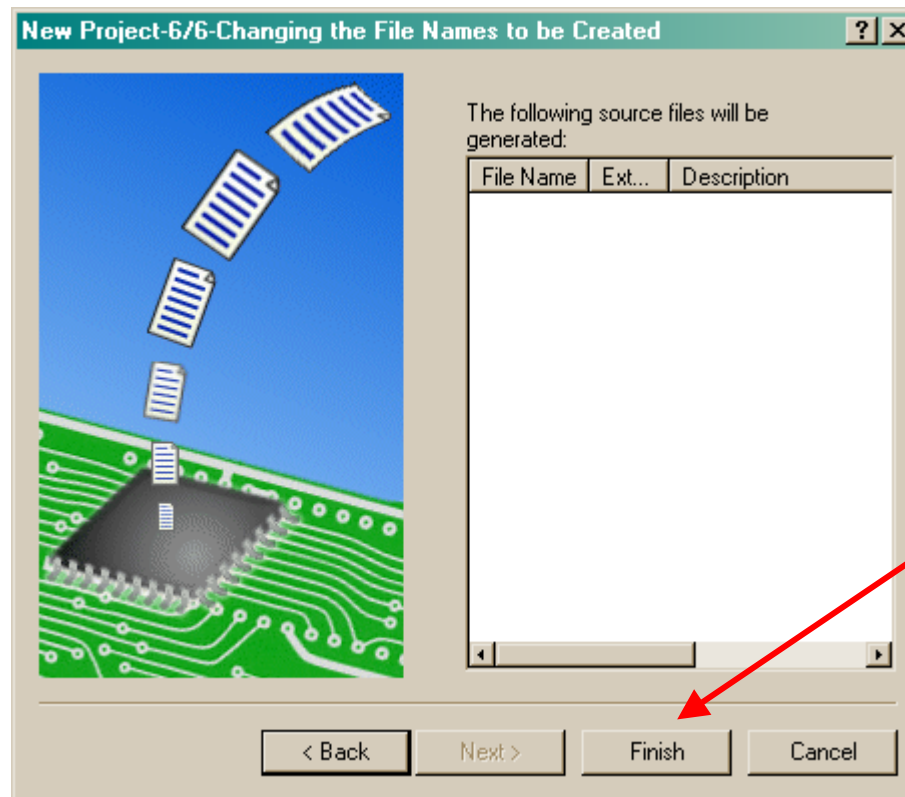
1. Select 'KD30'.

2. Leave as is.

3. Click on 'Next'.

Creating a New Project (7/8)

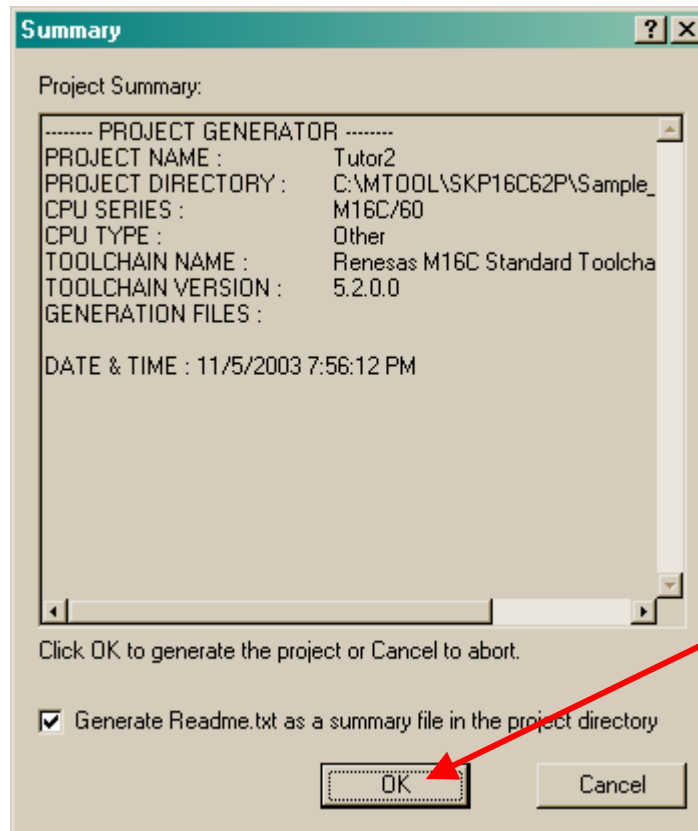
We already have the source files and selected USER startup files (see Creating a New Project 3/8 and 4/8) and so, there are no source files that will be generated.



1. Click on 'Finish' to complete project creation process...

Creating a New Project (8/8)

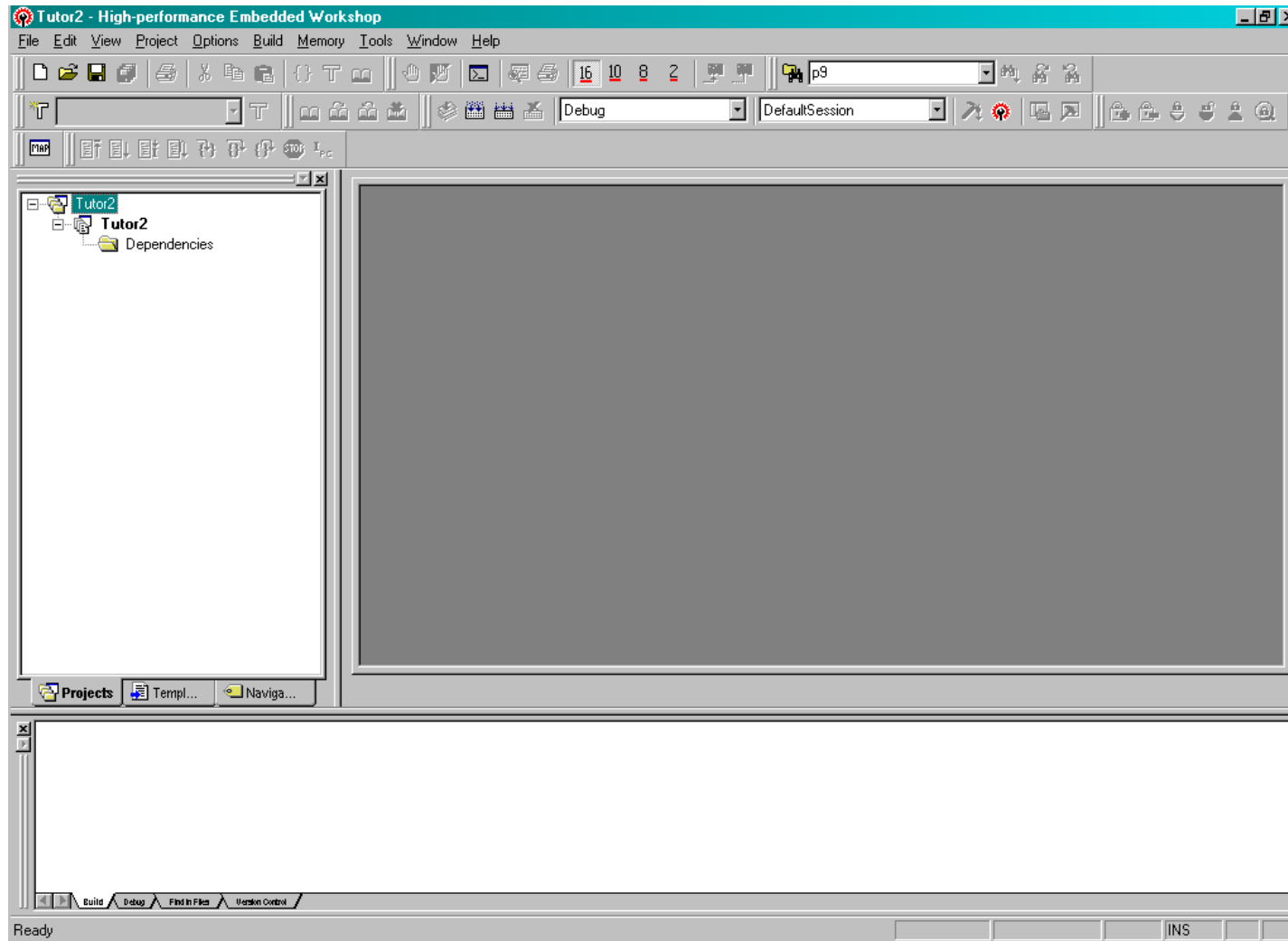
A project summary is displayed to indicate a successful creation of the new project, tutor2.



1. Click on 'OK'.

HEW

After creating the project, HEW will look similar to the figure below.



Default and User (SKP) Startup Files

Except for comments, the differences between the default (*ncrt0.a30* and *sect30.inc*) and user (*ncrt0_62pskp.a30* and *sect30_62pskp.inc*) startup files are listed below:

Ncrt0.a30

- BCLK – Set to **f1** (div by 1) of Xin (BCLK = Xin frequency) in user file.
- Stack sizes – Smaller (**0x100**) in user file [default at 0x300].
- Heap size – **0** (no heap size) in user file.
- Vector Base Address – **0xFD000** for (M16C/62P) in user file [default at 0xFFD00 (M16C/62)]
- Section Allocation – **Calls user sect30 file (sect30_62pskp.inc)** [default calls default sect30.inc].
- Standard I/O Initialization – **No initialization** in user file (done using `mcu_init` from `main()`) [default file calls `_init` routine].

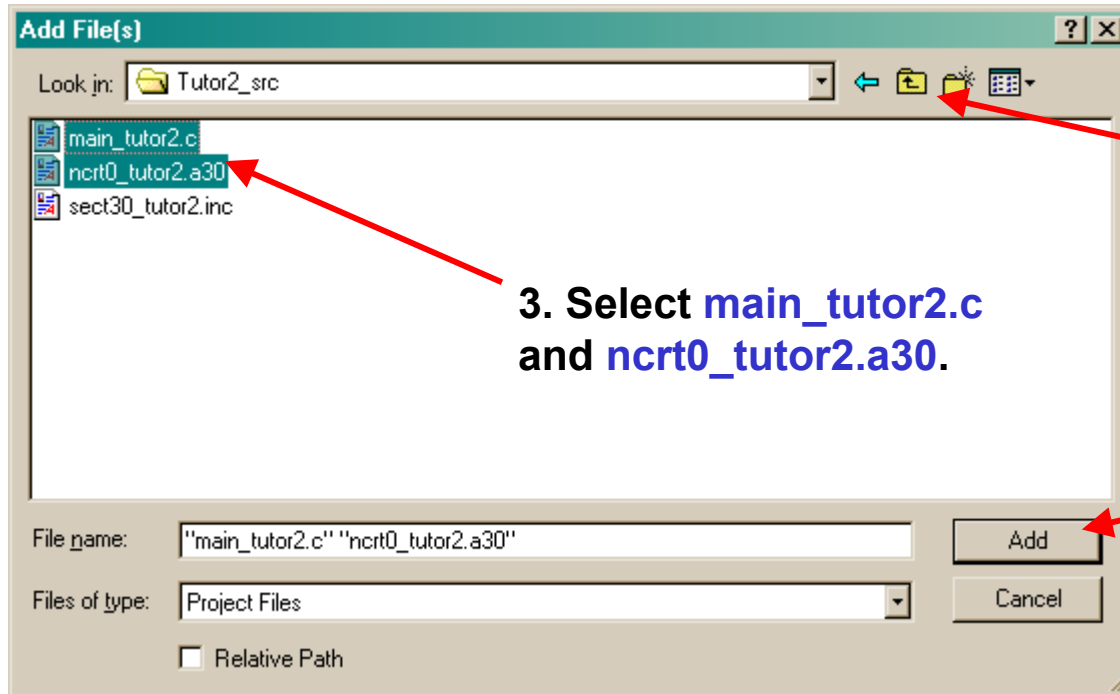
Sect30.inc

- Variable Vector Definition – Simplified and described in user file

Note: *You can use the default startup files but ensure that you understand the how to make the necessary modifications. The customized startup files for the SKP can be found under C:\MTOOL\SKP16C62P\Sample_Code\Startup_files directory.*

Adding Source Files (1/2)

1. From HEW's **Project** menu, select **Add Files** and the Add Files dialog box is displayed.



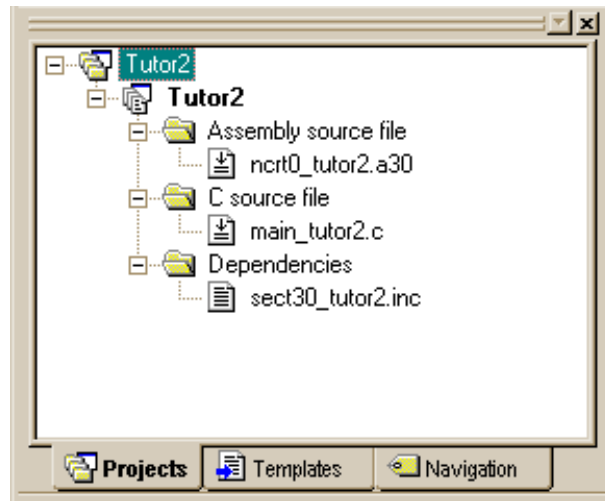
2. Browse to **C:\MTOOL**
\SKP16C62P
\Sample_Code\Tutor2_src
folder, which contains the
source codes for this
tutorial.

3. Select **main_tutor2.c**
and **ncrt0_tutor2.a30**.

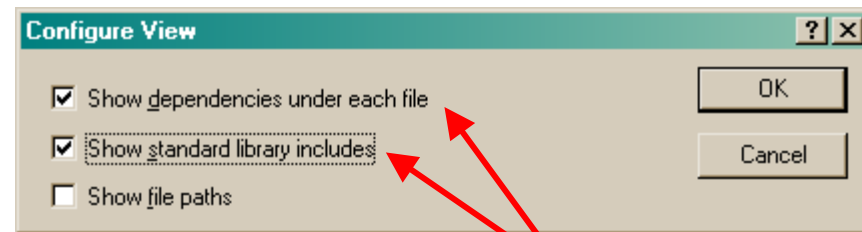
4. Click on **Add**.

Adding Source Files (2/2)

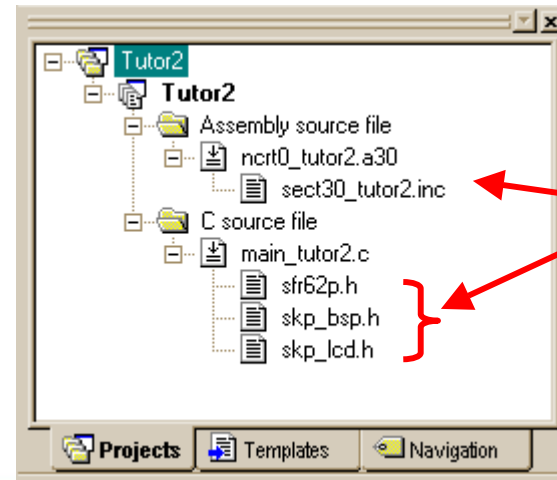
After adding source files, HEW's workspace will look like the figure below.



1. To display dependencies per source file, right-click on the Workspace window, and click on the **Configure View**.



2. Click on check boxes in Configure View dialog box.
3. Click on **OK** button.



Displaying the source file dependencies this way makes it easier to verify if the header files are included before building the project.

Linking the Startup File First (1/2)

After checking dependencies, NC30 must be setup to compile and link the startup files first. The startup files contain information on memory addresses and sections which the linker uses to place the code at the correct addresses.

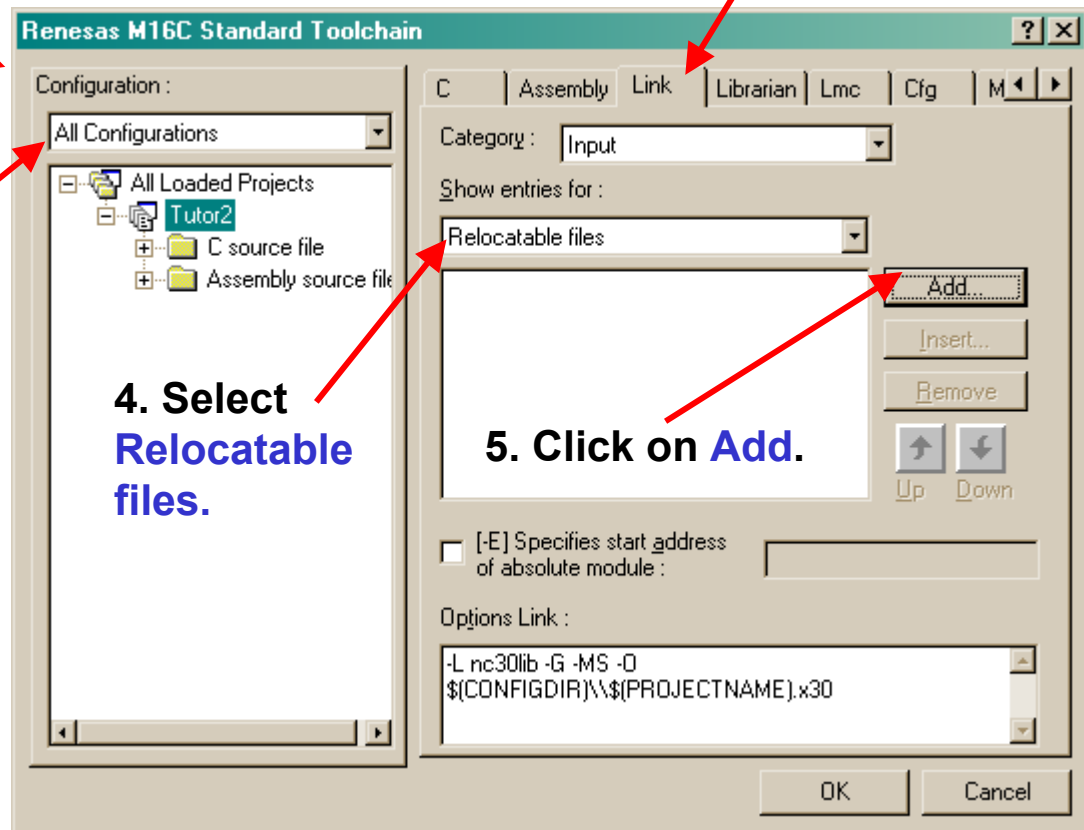
1. Select **Renesas M16C Standard Toolchain** from the **Option** menu and this window is displayed.

2. Select **All Configurations**.

4. Select **Relocatable files**.

3. Click on **Link** tab.

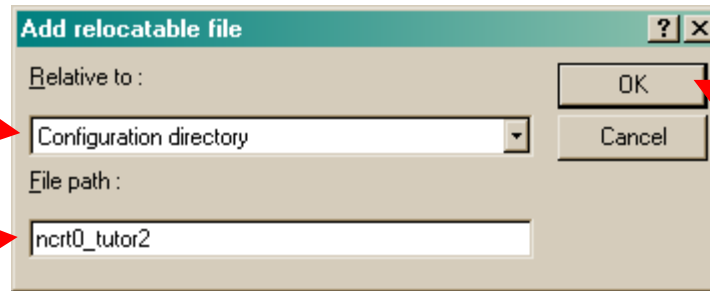
5. Click on **Add**.



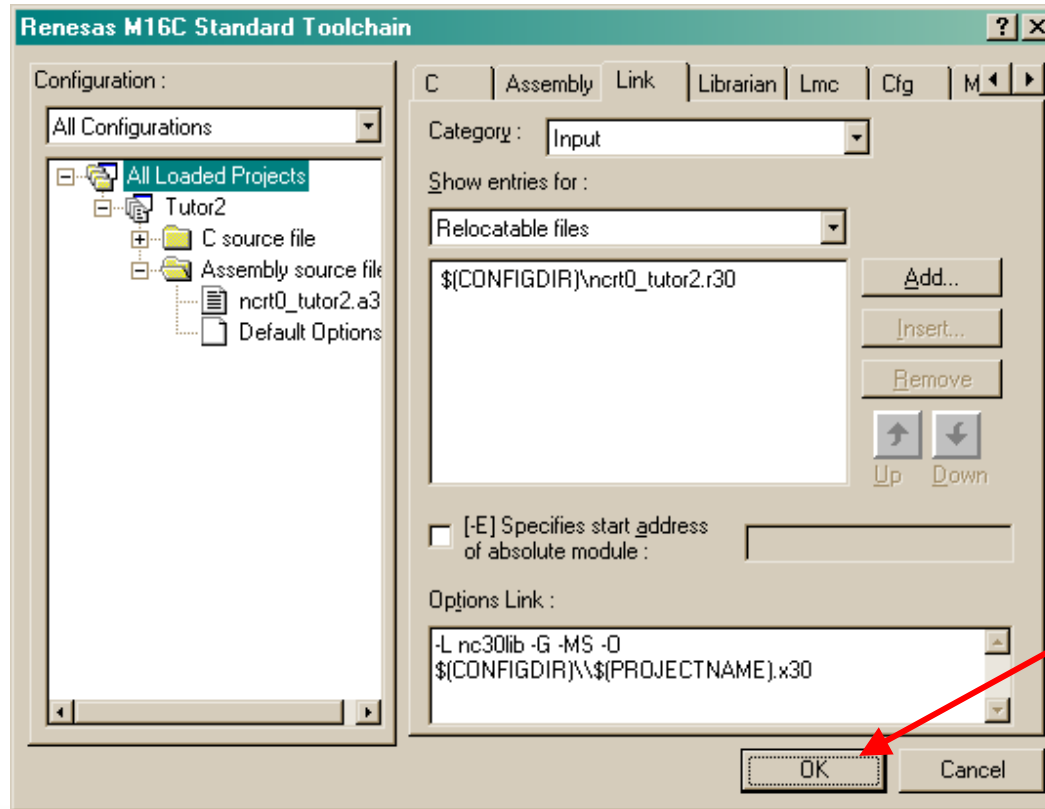
Linking the Startup File First (2/2)

1. Select Configuration directory.

2. Enter the startup source file, i.e. ncr0_tutor2.

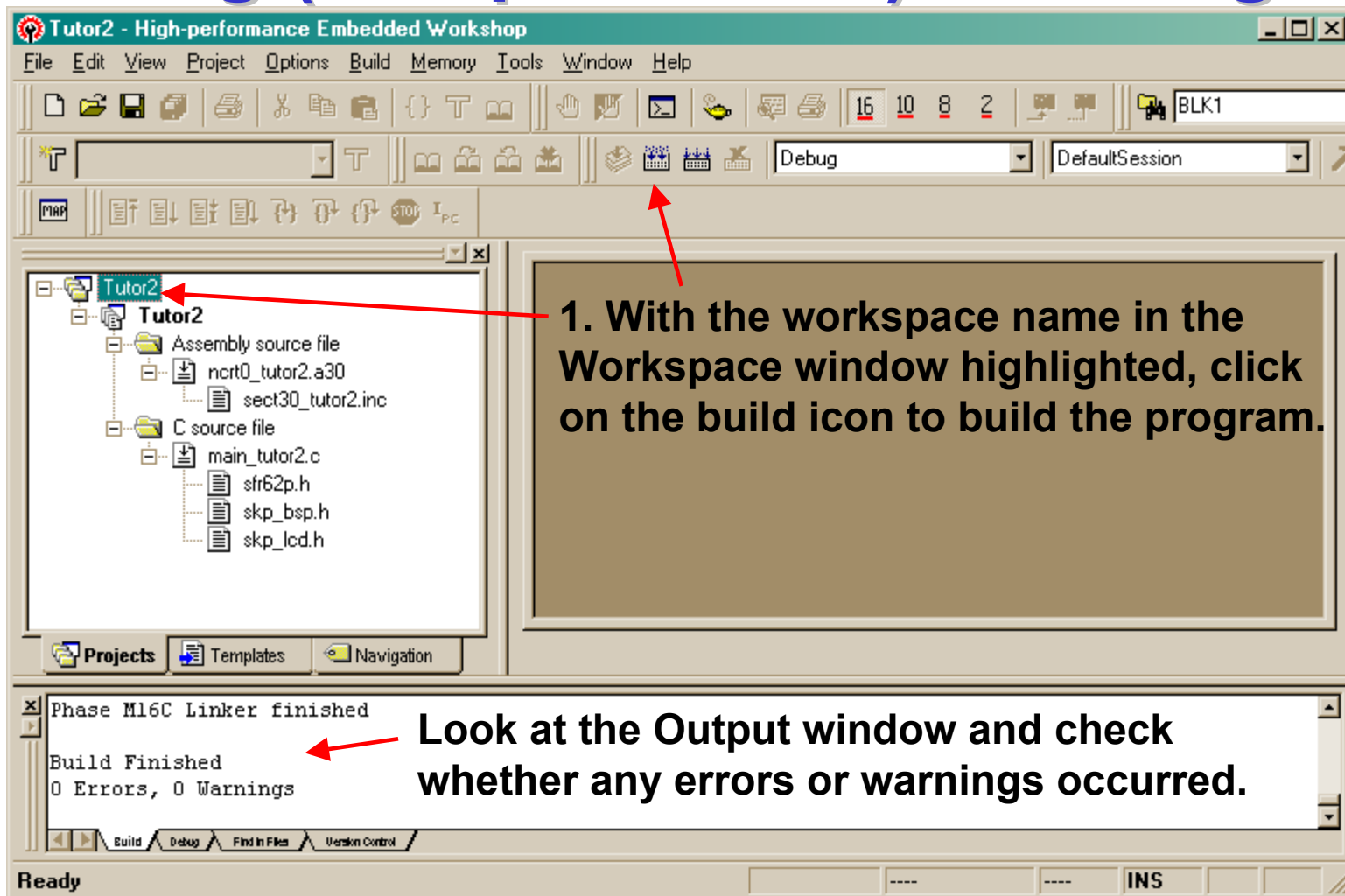


3. Click on OK.



4. Click on OK.

Building (compile & link) the Program



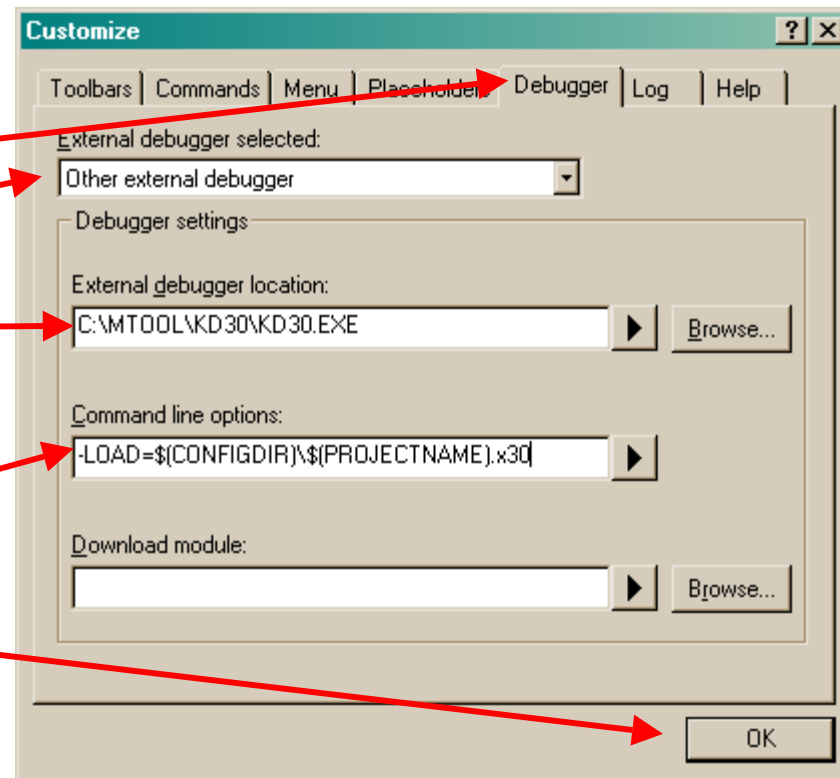
If there are no errors, try running the program on the SKP16C62P Board using the ICD and KD30 Debugger.

Launching KD30 from HEW

KD30 can be launched directly from HEW, but HEW must be configured as shown below.

1. Select **Customize** from from the **Tools** menu.
2. Click on **Debugger** tab
3. Select **Other external debugger**.
4. Locate **KD30** from **C:\MTOOL\KD30** folder.
5. Enter **-LOAD=\${(CONFIGDIR)\\$(PROJECTNAME).x30}**.
6. Click on **OK**.

To launch (and download .x30 file) KD30, click on this icon.



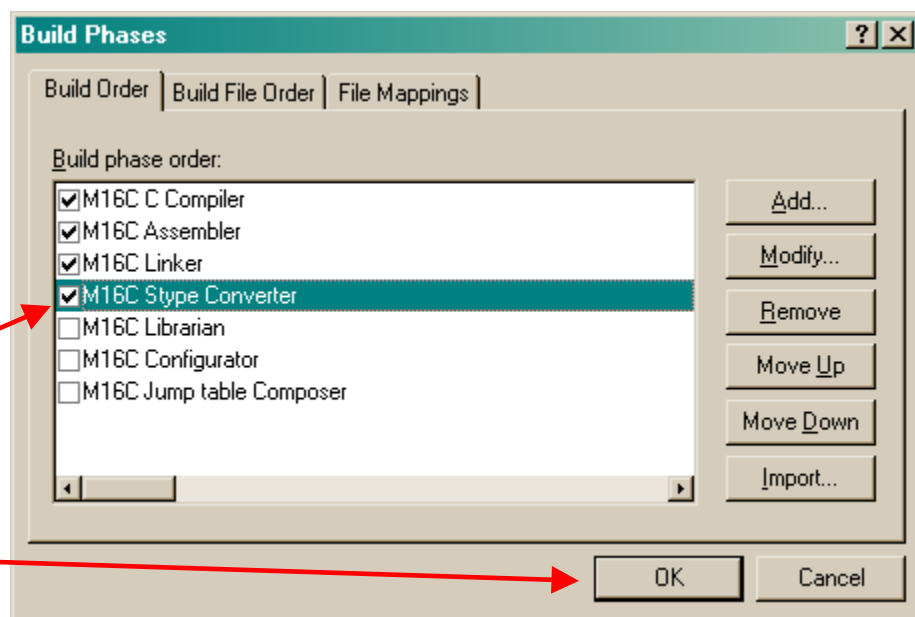
Generate a hex file for the Programmer

After building a program, a file with an **.x30** is generated. For this example, **'tutor2.x30'** is generated. This **.x30** file can be downloaded using KD30. However, device programmers, including the FoUSB Programmer, use hex files in Motorola or Intel format.

1. To generate a hex file during the build process, select **Build Phases** from the **Option** menu.

2. Click on **M16C Stype converter** checkbox.

3. Click on **OK**.



With the feature enabled, a hex (.mot) file is created when building the project. Look for a **Tutor2.mot** file under **C:\MTOOL\SKP16C62P\Sample_Code\Tutor2\Tutor2\Debug** folder.

End of Tutorial 2

This is the end of the tutorial. You can try modifying or downloading other sample programs from the \Sample_Code directory.

The completely built tutor2 project can be found in the Zip file under C:\MTOOL\Sample_Code\tutor2_src folder.

Be sure to check out the references on the following pages.

Have Fun!!



References and Recommended Reading

All documents that came with the SKP can be found using the “Document Description” from the Start > Programs > Renesas-Tools > SKP16C62P menu.

- **SKP16C62P User’s Manual:** This is a “must read” document! It details all the things you need to know on how to use the Starter Kit.
- **HEW User’s Manual:** To fully understand and get the most out of HEW. This is recommended reading.
- **KD30 Version X.XX Help:** The tutorial only covered the basics of KD30. Check out the Help menu to find out all of KD30’s features.
- **NC30 Version X.XX User’s Manual:** Check this manual out for features specific to the NC30 compiler.
- **M16C/62P Datasheet and SKP16C62P Board Schematic:** These are required to write user application programs.
- **RTA-FoUSB-MON User’s Manual:** Read this manual to understand how the ICD works.

References and Recommended Reading

- **M16C/10/20/60 Series C Language Programming Manual:** This is a great document for any level of programmer. The first chapter is an intro to C programming. The next chapter explains the memory map of C programs on microcontrollers and the role of startup programs.
- **M16C/10/20/60 Series Software Manual:** This document describes the instruction set and timing information for the M16C/20/60 series CPU cores.
- **AS30 Version X.XX User's Manual:** Read this manual if you plan on writing programs in Assembly or when making changes to the startup file.
- **Application Notes and Sample Programs:** Application notes and other sample programs can be accessed from Renesas Technology America's website: <http://www.renesas.com>.

