

3000 SERIES II MANUALS

30381A standard manual package contains the following manuals:

Terminal Users Guide	03000-90121
Series II General Information Manual	30000-90008
Commands Reference Manual	30000-90009
Intrinsics Reference Manual	30000-90010
Segmenter Reference Manual	30000-90011
Debug/Stack Dump Reference Manual	30000-90012
Console Operators Guide	30000-90013
Systems Manager/Systems Supervisor	30000-90014
Error Message and Recovery Manual	30000-90015
Index to MPE Reference Manuals	30000-90045
SPL Reference Manual	30000-90024
SPL Text Book	30000-90025
TRACE/3000 Reference Manual	03000-90015
SORT/3000 Reference Manual	32214-90001
FCOPY/3000 Reference Manual	03000-90064
EDIT/3000 Reference Manual	03000-90012
Compiler Library Reference Manual	30000-90028
MPE System Utilities Manual	30000-90044
HP 3000 Software Pocket Guide	30000-90049
System Reference Manual	30000-90020
Machine Instruction Set Reference Manual	30000-90022

OPTIONAL MANUALS:

30381A-600

BASIC/3000 Compiler Reference Manual	32103-90001
BASIC/3000 Interpreter Reference Manual	30000-90026
BASIC for Beginners	03000-90025
BASIC Interpreter Pocket Guide	03000-90050

30381A-601

FORTTRAN/3000 Reference Manual	30000-90040
Scientific Library Reference Manual	30000-90027

30381A-602

IMAGE Reference Manual	30000-90041
QUERY Reference Manual	30000-90042
COBOL/3000 Reference Manual	32213-90001
RPG/3000 Reference Manual	32104-90001
RPG/3000 Listing Analyzer	32104-90003
DEL/3000 Manual	30000-90050

HP 3000 SERIES II
SYSTEM LEVEL SERVICE DOCUMENTATION
for CUSTOMER ENGINEERS

I.	SITE PREPARATION	
	A. PREPARATION MANUALS	
	1. Site Preparation Manual	30000-90016
	2. Site Planning Workbook	30000-90017
II.	SYSTEM REFERENCE AND SUPPORT	
	A. REFERENCE MANUALS	
	1. Machine Instruction Set	30000-90022
	2. System Reference Manual	30000-90020
	B. SUPPORT MANUALS	
	1. System Support Log	03000-90117
III.	INSTALLATION AND SERVICE	
	A. SYSTEM MANUALS	
	1. System Installation	30000-90019
	2. System Service	30000-90018
	3. Signal and Power Distribution	30000-90021
	4. System Block Diagram	30000-90058
	5. Microprogram Listing	30000-90023
	6. 29400B Series Cabinet and 30300A Power Control Module, Installation and Service	02940-90256
	7. 29400B Supplement for HP 3000	02940-90258
	8. Power Control Unit HP 30330A	30330-90001
	9. Cabinet HP 29425A	29425-90001
	10. Customer Support Handbook	30000-90070
	11. 30408A Series II Upgrade Kit Installa- tion Guide	30408-90001
	12. 30409A Pre-Series II to Series II Up- grade Kit Installation Guide	30409-90001
	13. 30411A Add-On Memory Kit Installation Guide	30411-90001

These manuals are the new Series II System Level manuals. A complete cross reference index of all Series II Customer Engineering manuals, including subsystem manuals and device manuals (such as the 2617A Lineprinter I & S manual) is being produced.

APPENDIX C: HP 3000 Series II Documentation

This appendix summarizes all of the available user documentation for the HP 3000 Series II Computer System. Figure C-1 does this in the form of a block diagram. The remainder of the appendix presents the full title, HP part number, and a brief description of each document. For ordering information see your HP Sales Representative.

OPERATING SYSTEM MANUALS

MPE Commands Reference Manual (30000-90009)

Describes how to communicate with MPE-II using operating system commands entered through an interactive terminal or as part of a batch job stream.

NEW

MPE Intrinsic Reference Manual (30000-90010)

Describes how to communicate with MPE-II programmatically using intrinsic (system procedure) calls. It also describes the capabilities that are available to users who have been assigned special attributes by the System Manager/System Supervisor.

NEW

MPE Segmenter Reference Manual (30000-90011)

Describes how to manage User Subprogram Library (USL) files, build and manage Segmented Library (SL) files, and alter the segmentation of a program using the MPE-II Segmenter.

NEW

MPE Debug/Stack Dump Reference Manual (30000-90012)

Describes how to debug programs using the debug and stack dump features of MPE-II.

NEW

MPE System Utilities Manual (30000-90044)

Describes how to use MPE-II system utilities which perform such functions as copying disc files to magnetic tape for later retrieval, printing analytical listings of main memory dumps, modifying and listing the content of disc files, and displaying or modifying the content of Segmented Library (SL) files.

NEW

Index to MPE Reference Documents (30000-90045)

The master index for the entire set of MPE-II operating system user manuals.

NEW

Error Messages and Recovery Manual (30000-90015)

Summarizes the probable causes and recommended recovery actions for operating system and subsystem error messages.

NEW

System Manager/System Supervisor Manual (30000-90014)

Describes the commands and capabilities available to the system administrators (System Manager, System Supervisor, and Account Manager) of an HP 3000 Series II.

NEW

Console Operator's Guide (30000-90013)

Describes the commands and functional capabilities available to the Console Operator of an HP 3000 Series II. It also describes the operating instructions for the machine-resident microdiagnostic programs.

NEW

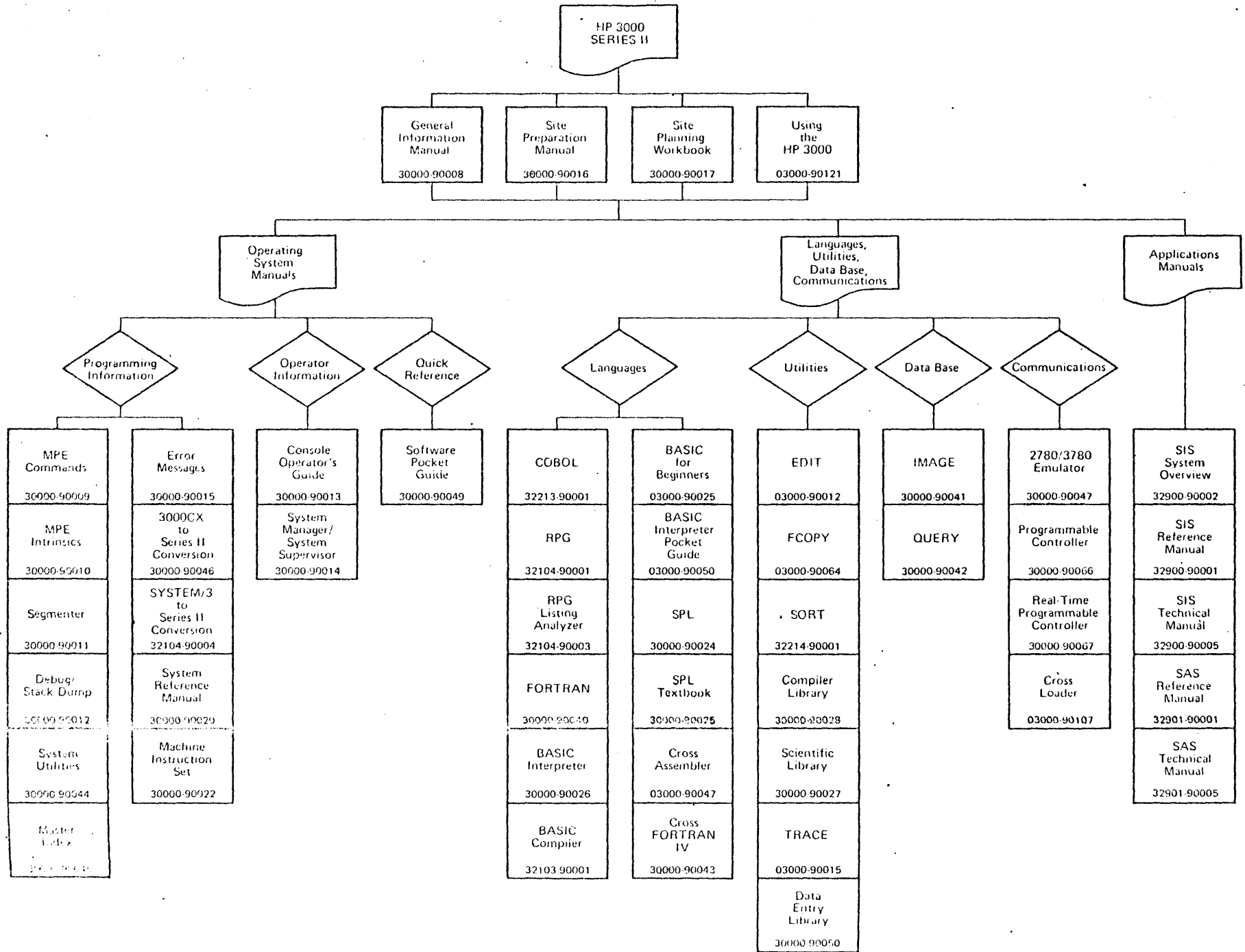


Figure C-1. HP 3000 Series II Documentation

HP 3000CX to HP 3000 Series II Program Conversion Guide
(30000-90046)

Describes how to convert programs and data files created on an HP 3000CX so that they can be used on an HP 3000 Series II. Covers MPE, FORTRAN, BASIC, SPL, and IMAGE.

NEW

IBM SYSTEM/3 to HP 3000 Conversion Guide (32104-90004)

Describes how to convert programs and data files created on an IBM SYSTEM/3 so that they can be used on an HP 3000 Series II.

HP 3000 Software Pocket Guide (30000-90049)

Summarizes all MPE-II commands, intrinsics (system procedures), and File System error messages, all Text Editor, File Copier, Sort/Merge, and 2780/3780 Emulator commands, and all language compiler subsystem commands. It also summarizes the ASCII character set and collating sequence, the HP 3000 Series II machine instruction set, the condition codes and status register, and the interrupt/trap segments and parameters.

Sort added

MACHINE REFERENCE MANUALS

Site Preparation Manual (30000-90016) — *NEW*
Site Planning Workbook (30000-90017)

These two manuals help you prepare your site for the installation of an HP 3000 Series II Computer System.

System Reference Manual (30000-90020)

Provides a detailed technical description of the architecture and principles of operation of the HP 3000 Series II Computer System.

NEW

Machine Instruction Set Reference Manual (30000-90022)

Describes all of the machine instructions of the HP 3000 Series II Computer System.

NEW

(This used to be combined with System Ref. Manual)

PROGRAMMING LANGUAGE MANUALS

COBOL/3000 Reference Manual (32213-90001)

Describes the constructs and use of the COBOL/3000 language.

RPG/3000 Compiler Reference and Application Manual (32104-90001)

Describes the constructs and use of the RPG/3000 language.

RPG Listing Analyzer (32104-90003)

A column and field template which makes it easier to read RPG listings.

FORTRAN Reference Manual (30000-90040)

Describes the constructs and use of the FORTRAN/3000 language.

BASIC Interpreter Reference Manual (30000-90026)

Describes the constructs and use of the BASIC/3000 language.

BASIC/3000 Compiler Reference Manual (32103-90001)

Describes how to compile a BASIC/3000 program.

BASIC for Beginners (03000-90025)

Describes the following five functional elements of the BASIC/3000 language:

- Calculating values
- Transferring control
- Looping
- Functions and subroutines
- Strings and files

BASIC/3000 Interpreter Pocket Guide (03000-90050)

Summarizes the constructs of the BASIC/3000 language.

Systems Programming Language Reference Manual (30000-90024)

Describes the constructs and use of the HP 3000 Systems Programming Language (SPL/3000).

NEW

Systems Programming Language (30000-90025)

Describes the constructs and use of SPL/3000 in a tutorial manner. Designed for self-study, each chapter concludes with an examination.

Cross Assembler for 2100 Computers Reference and Application Manual (03000-90047)

Describes how to assemble HP 2100 Assembler Language programs on an HP 3000.

NEW

Cross FORTRAN IV Reference Manual (30000-90043)

Describes how to compile HP 2100 FORTRAN IV programs on an HP 3000.

ADDITIONAL MANUALS

EDIT/3000 Reference Manual (03000-90012)

Describes the constructs and use of the HP 3000 Text Editor.

NEW

FCOPY Reference Manual (03000-90064)

Describes the constructs and use of the HP 3000 File Copier.

Sort/3000 Reference Manual (32214-90001)

Describes the constructs and use of the HP 3000 Sort/Merge program.

HP 3000 Compiler Library Reference Manual (03000-90009)

Describes what each input/output formatting, mathematical, and utility procedure in the HP 3000 Compiler Library does and how to call them.

HP 3000 Scientific Library Reference Manual (03000-90010)

Describes what each mathematical, statistical, and utility procedure in the HP 3000 Scientific Library does and how to call them.

HP 3000 Symbol Trace Reference Manual (03000-90015)

Describes how to debug programs using the HP 3000 Symbol Trace program.

IMAGE Reference Manual (30000-90041)

Describes how to create, maintain, and use an IMAGE/3000 data base.

QUERY Reference Manual (30000-90042)

Describes how to access an IMAGE/3000 data base from an interactive terminal using the QUERY/3000 program.

2780/3780 Emulator Reference Manual (30000-90047)

Describes how to transfer data between an HP 3000 and a variety of remote processors in a full multiprogramming environment over the public telephone (switched) network or a private leased line using the HP 30130 2780/3780 Emulator Subsystem. The Emulator makes the HP 3000 appear to the remote processor as either an IBM 2780 or 3780 Data Transmission Terminal.

Programmable Controller Reference and Application Manual (30000-90066)

Describes how to program the hardwired communications link between an HP 3000 and an HP 2100 (with a BCS operating system environment) provided by the HP 30300 Programmable Controller.

Real-Time Programmable Controller Reference and Application Manual (30000-90067)

Describes how to program the hardwired communications link between an HP 3000 and an HP 2100 (with an RTE-C operating system environment) provided by the HP 30301 Real-Time Programmable Controller.

HP 3000 Cross Loader for HP 2100 Computers Reference and Application Manual (03000-90107)

Describes how to do the following on an HP 3000 using the Cross Loader:

- Perform program relocation and linking for HP 2100 programs
- Generate HP 2100 BCS operating systems
- Transfer the resultant output of the above two operations from the HP 3000 to an HP 2100 over a communications link

Using the HP 3000: A Guide for the Terminal User (03000-90121)

An introduction to the use of the HP 3000 Series II. Covers terminal characteristics, initiating and terminating an interactive session, some MPE-II File System commands, the HP 3000 Text Editor, FORTRAN/3000, COBOL/3000, and the BASIC/3000 Interpreter.

Data Entry Library Reference Manual (30000-90050)

Describes how to do the following using the HP 3000 Data Entry Library (DEL/3000):

- Create forms interactively from an HP 2640/2644 Terminal and store them in the system
- Display, modify, and delete forms interactively from an HP 2640/2644 Terminal
- Call DEL/3000 procedures from within user programs to display the forms on a terminal and allow anyone running these user programs to enter data on the form images, edit this data, and store it in data files in the formats established by the user programs.

NEW

Student Information System — System Overview (32900-90002)

Briefly describes the features and suggested applications of the Student Information System (SIS/3000) data storage and retrieval system which is designed for use in educational institutions.

Student Information System Reference Manual (32900-90001)

Describes how to implement an educational information system using the three SIS/3000 subsystems (Attendance Accounting, Mark Reporting, and Family Information Reporting).

Student Information System — Technical Manual (32900-90005)

Describes the internal maintenance specifications for the HP-supplied SIS/3000 software. This manual is necessary only if your application requires that HP-supplied software be modified. Note that modified HP software is not covered by the warranty.

Student Assignment System Reference Manual (32901-90001)

Describes how to implement a class scheduling system for educational institutions using the Student Assignment System (SAS/3000).

Student Assignment System — Technical Manual (32901-90005)

Describes the internal maintenance specifications for the HP-supplied SAS/3000 software. This manual is necessary only if your application requires that HP-supplied software be modified. Note that modified HP software is not covered by the warranty.

2607A Lineprinter Operating & Programming Manual (30209-90008)

This manual provides operating and programming information on the 2607A, 2613A, 2617A, and 2618A Lineprinters. Programming examples are included.

2894A Card Reader Punch Operating & Programming Manual (30119-90009)

This manual provides operating and programming information on the 2894A Card Reader Punch. Programming examples are included.