

Prestige Series: L2TP Facts

◆ Industry Standard

L2TP is a standard-track protocol sanctioned by the IETF (Internet Engineering Task Force), as opposed to Microsoft's[®] proprietary PPTP (Point-to-Point Tunneling Protocol). It is supported by all the major vendors in data communications, including Microsoft.

◆ Savings in Long-Distance Calls

With the help of L2TP and the Internet, long-distance calls are replaced by local calls to the ISP. Significant savings can be realized in the telephone cost.

◆ User-Transparent

L2TP is a protocol and is transparent to the existing user applications. There is no need to invest in new software to take advantage of L2TP.

◆ Multiple-Protocol Support

Because L2TP tunnels exclusively at the PPP layer, protocols other than IP can be easily supported.

◆ Outsourcing of Access Service

L2TP separates the physical WAN access points from the PPP servers, thus allowing corporations to outsource remote access service to ISPs while maintaining the control over security. The elimination of access hardware and maintenance personnel can mean significant savings for corporations.

◆ Roaming User Support

L2TP allows the POP (Point of Presence) to be located far away from the corporate servers. This allows the roaming users to connect to the corporate network at a reduced cost, and yet not restrict them to TCP/IP applications.

◆ L2TP Functionality

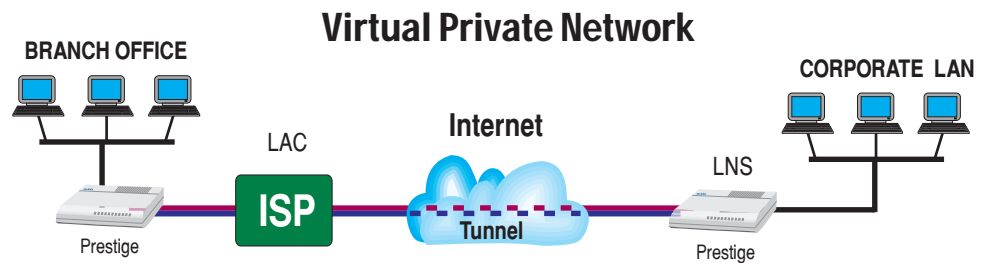
The two endpoints of a L2TP tunnel performs different functions. The LNS (L2TP Network Server) terminates the PPP connection and negotiates directly with the user's PPP protocol stack. The LAC (L2TP Access Concentrator) relays the traffic between the LNS and the user. ZyXEL's implementation supports both functions within a single Prestige.

Applications

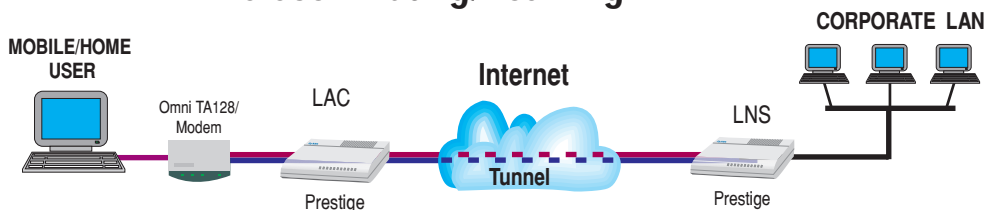
*LAC = L2TP Access Concentrator

**LNS = L2TP Network Server

The Internet can only carry TCP/IP traffic; however, by tunneling with L2TP, non-TCP/IP data can be transported through the Internet without the cost of direct telephone connections. In this application, the Prestige can serve as either the LAC at the ISP or as the LNS at the corporate office.

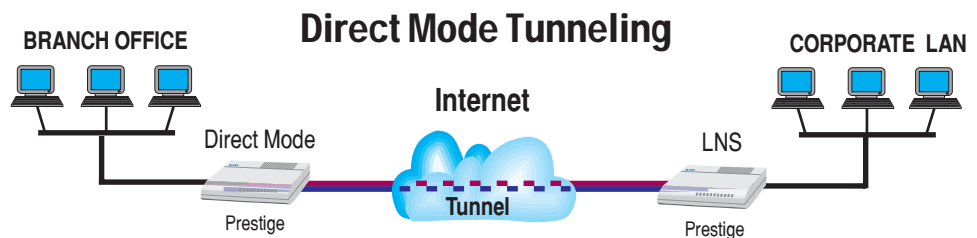


Telecommuting/Roaming



Since L2TP tunnels exclusively at the PPP layer, the corporate server has total control over authentication and IP address assignment, making authentication and firewall administration a breeze. From a cost standpoint, the user only has to make calls to a local ISP, saving the telephone charge of dialing directly to the corporate server. Again, the Prestige can be deployed both at the ISP and at the corporate office.

If both the branch and corporate offices are using Prestiges equipped with the L2TP feature, each can originate the tunneling to the other Prestige. The tunnel is between the two Prestiges and is totally transparent to the ISP, thus the user need not make any special arrangement with the ISP. With this unique implementation by ZyXEL, Prestige owners can enjoy the benefits of L2TP without waiting for the ISPs to deploy L2TP.



All specifications are subject to change without notice. Trademarks are the properties of their respective owners.