



Matrox® KMLync Keyboard & Mouse Switch

User Guide

20345-301-0100

2023.10.09

Table of contents

Table of contents

Matrox safety information

Installation and operation

If a power supply (internal or external) was included with your product

If your product includes laser-based technology

If your product includes a battery

Repair

Technical specifications

Front and back

Installation

Initial setup

Updating firmware

Seamless mouse switching

System operation

Front panel control

Hotkey commands

Custom hotkey triggers

RS-232 serial control

Matrox KMLync Utility for Windows

Display topology configuration

Using the Matrox KMLync Utility for Windows

Active ports configuration

Using the Matrox KMLync Utility for Windows

Settings files

Creating a settings file

Loading a settings file

Connecting KMLync to Matrox Extio 3 devices

Troubleshooting

No power

No video

Keyboard is not working

Mouse is not working

Customer support

Matrox Video web

Technical support

Information we need

View your warranty information

View the third party software notices

Register your Matrox Video product

Compliance statements

USA

Canada

United Kingdom

Japan

Korea

Europe (Declaration of Conformity)

Europe (WEEE Directive)

France

Trademarks

Disclaimers

Matrox safety information



To ensure safe and reliable operation of your Matrox product, to avoid personal injury, and to prevent damage to your computer or Matrox hardware, read the following guidelines.

Installation and operation

- Read and retain all instructions. Only use your Matrox product according to the instructions, operating ranges, and guidelines provided in the Matrox user guide and other related Matrox documentation. Failure to follow these instructions could result in damage to your product or injury to the user or installer.
- Don't expose your Matrox product to rain, water, condensation, or moisture.

- **Caution: Hot Surface, Do Not Touch.**

Your Matrox product can become hot while operating. Ensure that your computer cover is secured in place before turning it on.

Always turn off your computer, unplug it, and then wait for it to cool before removing the cover of your computer to touch any of its internal parts or to install your Matrox card. Allow hot surfaces to cool before touching your Matrox unit.

- **Attention: Surface chaude, ne pas toucher.**

Votre produit Matrox peut devenir chaud durant son fonctionnement. Assurez-vous de bien fermer le couvercle de votre ordinateur avant de l'allumer.

Éteignez votre ordinateur, débranchez-le et attendez qu'il refroidisse avant d'ouvrir son couvercle pour accéder à ses parties internes ou pour installer votre carte Matrox. Laissez les surfaces chaudes refroidir avant de toucher votre appareil Matrox.

- Static electricity can severely damage electronic parts. Before touching any electronic parts, drain static electricity from your body (for example, by touching the metal frame of your computer).
- When handling a card, carefully hold it by its edges and avoid touching its circuitry.
- Don't stack devices or place devices so close together that they're subject to recirculated or preheated air.
- Don't operate your system or Matrox product near a heat source or restrict airflow to your system, and make sure the ambient temperature doesn't exceed the maximum recommended temperatures. Don't block ventilation holes on your unit or system.

If a power supply (internal or external) was included with your product

- Don't place the external power supply directly on top of the device.
- Only use power supplies originally supplied with the product or use a replacement that's approved by Matrox. Don't use the power supply if it appears to be defective or has a damaged chassis.

- Any AC-powered product must be connected to a grounded outlet installed by a licensed electrician. Don't defeat the safety purpose of the polarized or grounding-type plug. A polarized plug has two blades with one wider than the other. A grounding-type plug has two blades and a third grounding prong. The wide blade or the third prong are provided for your safety. If the provided plug doesn't fit into your outlet, consult a licensed electrician to replace the obsolete outlet.
- Make sure that nothing rests on the power cables and that the cables aren't located where they can be stepped on, pinched, or tripped over.
- Don't use damaged power cables.
- Unplug your system or device during lightning storms or if unused for long periods of time.

If your product includes laser-based technology

- The device contains a Class 1 laser product for use only under the recommended operating conditions and guidelines. For more information, see your Matrox user guide.
- Invisible laser radiation may be emitted from disconnected fibers or connectors. Don't stare into beams or view directly with optical instruments.
- Only use optical transceivers originally supplied with the product or use a replacement that's approved by Matrox.
- For more information on laser support and compliance, see your Matrox user guide.

If your product includes a battery

- The battery is non replaceable.
- To dispose of your product, see www.matrox.com/environment/weee.



Repair

- Don't attempt to open or repair a power supply unit (if one was supplied).
- Don't attempt to open or repair your Matrox product.
- If there's a fault with your Matrox product, review your Matrox warranty for more information.

Technical specifications

USB	
Signal Type	USB 2.0, 1.1, and 1.0 w/ internal hub
CPU Ports	(4) USB Type B (female)
User Control Interface	(2) USB Type-A for keyboard and mouse connection only (2) USB Type-A for USB 2.0 transparent

CONTROL	
Mouse	Seamless mouse switching
Front Panel	Buttons
Hot Keys	Via Keyboard

OTHER	
Power Adapter	100-240V a.c. 50 to 60 Hz / 5V d.c. 3A 15W
Power Adapter Input Connector	IEC 60320-C14
Power Adapter Output Connector	Barrel Tuning Fork Style 5.5×2.1mm
Dimensions	12.57" W x 1.76" H x 6.69" D
Weight	4.2 lbs
Regulatory Compliance	Class A: CE, FCC, ICES-3, RCM, UKCA
Operating Temperature	+32 to +104°F (0 to +40°C)
Storage Temperature	-4 to 140°F (-20 to +60°C)
Humidity	5 to 90% (No Condensation)

Front and back

Front



Back



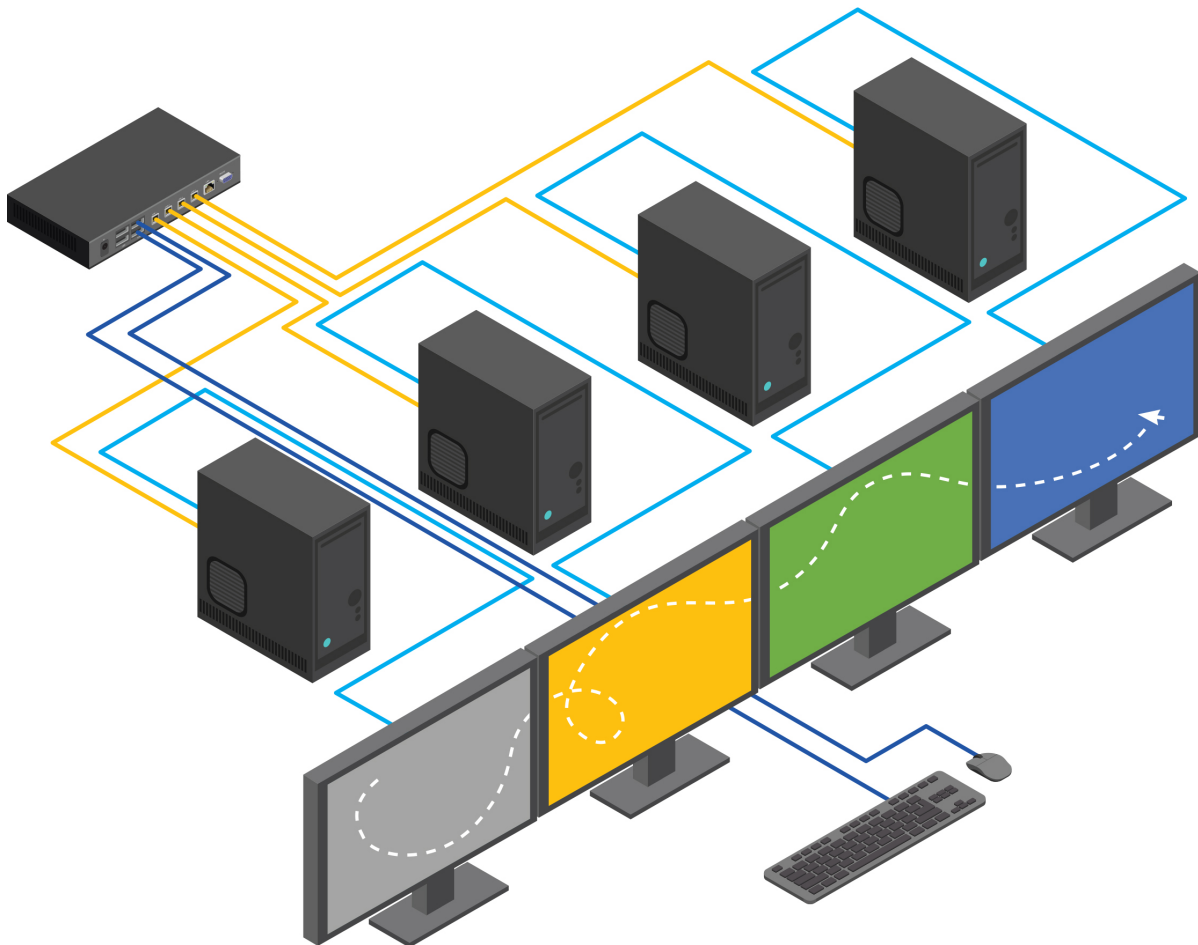
Installation

1. Ensure that power is turned off or disconnected from the unit and the computers.
2. Use a USB cable (Type-A to Type-B) to connect a USB port on each computer to the respective USB ports on the unit.

Note: USB cables are not included with your Matrox KMLync device.

3. Connect a USB keyboard and mouse in the two USB console ports.
4. Power on the Matrox KMLync by connecting a 5VDC power supply to the power connector.
5. Turn on all the computers.

Note: You can connect up to four sources to the Matrox KMLync.



Initial setup

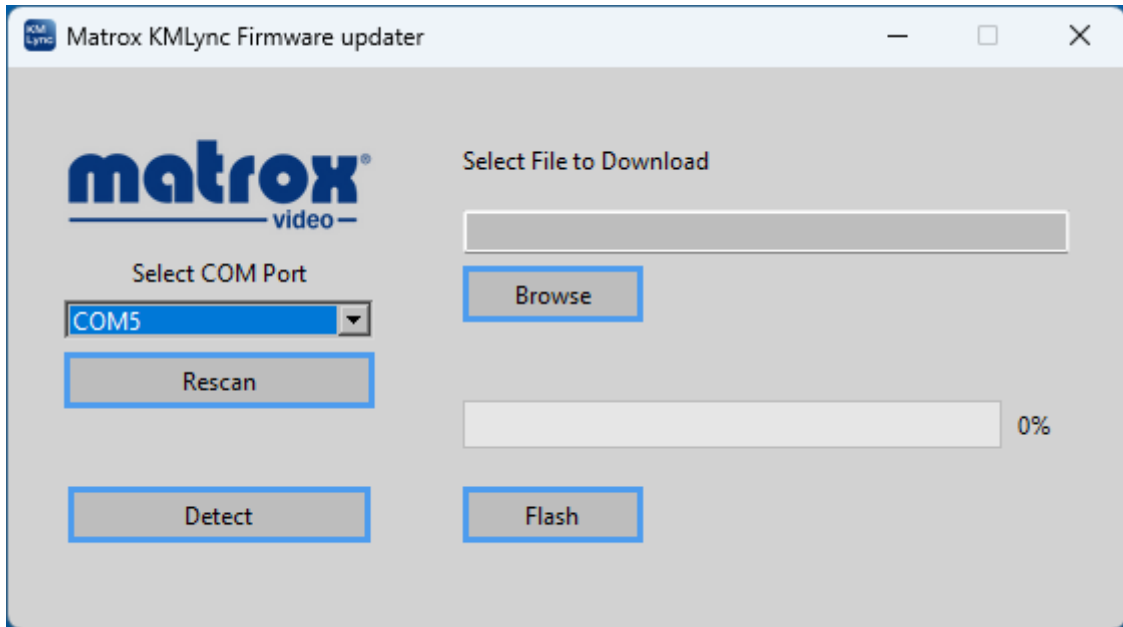
After all devices are connected to the Matrox KMLync, the user must choose a display topology configuration and display mode. By default, the Matrox KMLync is configured to a topology with four screens arranged horizontally starting with Port 1 on the left.

The installation setup must match one of Matrox KMLync's predefined display topology configurations. This can be selected through keyboard hotkey commands. Please refer to the [Display Topology Configuration](#) section for the available display topologies. Other configurations are possible through the Windows KMLync Utility after initial setup.

Updating firmware

To update your Matrox KMLync device firmware, follow the steps below:

1. Connect RS232 to the unit and identify the com port on the pc you're connected to.
2. Plug in 5V power supply to the unit.
3. Open the **Matrox KMLync Firmware updater** application.

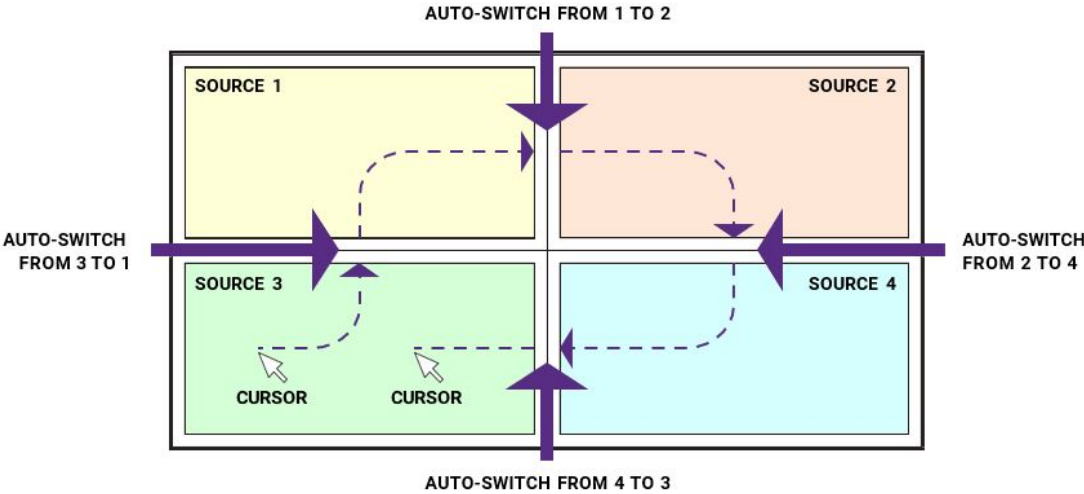


4. Select the COM port that corresponds to the KMLync device you want to update.
5. Click **Browse** to navigate to the correct update file on your computer.
6. Select the file, then click **Detect**. A pop-up window will appear asking you to start the detection process.
7. Click **Start** to start detection mode.
8. After a few seconds, power cycle the device by disconnecting and then reconnecting the power cable.
9. If the KMLync device is detected, the detection mode window will disappear and the **Flash** button will become available.
10. Click **Flash** to update the firmware.
11. If the KMLync device successfully receives the firmware update, you will see a confirmation and the device will begin a normal boot cycle. After the cycle is complete, the device will be ready to use.

The Matrox KMLync firmware is updated.

Seamless mouse switching

Matrox KMLync allows seamless mouse switching between computers by moving the mouse cursor from one display to another. In the KMLync utility, select *Absolute Mouse Mode* to enable this feature.



Note: The Matrox Extio3 Tally feature is only supported in *Absolute Mouse Mode*.

System operation

There are four ways to control the Matrox KMLync: front panel buttons, keyboard hotkeys, RS-232 serial commands, and through the Matrox KMLync Utility for Windows.

Front panel control

To switch to an input port, simply push the button on the front-panel of the Matrox KMLync device. If an input port is selected, the LED of that port will turn on.

Front Panel - Port Selection LEDs:

#	STATUS	DESCRIPTION
1	OFF	Non-selected port
2	ON	Selected port

Hotkey commands

A Hotkey command is a keyboard sequence used to trigger an action on the Matrox KMLync via the keyboard connected to the KMLync's USB port. To activate the hotkey sequence, press the **CTRL** key twice and then enter the desired hotkey commands.

Note: All commands can use upper and/or lower case characters.

COMMANDS	HOTKEY
Display Topology (multiple rows)	[CTRL] [CTRL] H [1-4]
Limit Input Ports (one row only)	[CTRL] [CTRL] W [1-4]
Cursor Rolling (roll past display borders up, down, left, and right)	[CTRL] [CTRL] O [0 (OFF), 1 (ON)]

Note: Display Topology specifies the number of horizontal columns. The number of vertical rows is calculated in the software by $4/n$ columns.

Custom hotkey triggers

Users can customize the keys that trigger hotkeys. The default trigger for hotkey function on the keyboard is **Ctrl + Ctrl**. The trigger function can be used to change to the following keys: **Ctrl** (Left / Right), **Alt**, **Shift** (Left / Right), **Caps Lock**, **Scroll Lock**, **F1-F12**

- To view the current hotkey trigger setting:
 - Use the RS-232 command: **/ + / + ? + ? + Enter** to view the current hotkey trigger. To reset the Hotkey Trigger, use the **"Factory Defaults"** command.
- To change the hotkey trigger setting:
 - [hotkey] + [hotkey] + **X** + [desired hotkey]

Example: If the user's current hotkey trigger is **Shift** and they want to change it to **Scroll Lock**, the user would type **Shift + Shift + X + Scroll Lock**.

RS-232 serial control

The Matrox KMLync may also be controlled via RS-232 commands. To use these commands, you must use HyperTerminal or an alternate terminal application. The settings for the connection are as follows: Baudrate **115200**; Data Bits **8**; Parity **None**; Stop Bits **1**; Flow Control **None**.

Once you have connected to the Matrox KMLync via Serial, you will see the Matrox KMLync information when the device starts up.

The following commands can be used for RS-232 with available keyboard hotkeys:

COMMAND DESCRIPTION	HOTKEY	RS-232 COMMAND
Switch All USB	[CTRL] [CTRL] [port #] [ENTER]	//m [port #] [ENTER]
Switch KM Only	[CTRL] [CTRL] c [port #] [ENTER]	//c [port #] [ENTER]
Switch USB Only	[CTRL] [CTRL] u [port #] [ENTER]	//u [port #] [ENTER]
Disable/Limit Ports	[CTRL] [CTRL] d [2-4] [ENTER]	//d [2-4] [ENTER]
Reset Software	[CTRL] [CTRL] r [ENTER]	//r [ENTER]
Factory Defaults	[CTRL] [CTRL] f [ENTER]	//f [ENTER]
Get Port Status	N/A	//?? [ENTER]
Switch resolution Channel: 1-4 Resolution: 1 (1080p), 2 (4K), 3 (2K), 4 (720p)	N/A	//ce [SPACE] [SKM #] [SPACE] [RESOLUTION #]
Mouse control speed (per resolution type) X and Y axes set in percent [0-500]	N/A	//mm [SPACE] [resolution #] [SPACE] [x #] [y #]
Get resolution/mouse info	N/A	//rl [ENTER]

Matrox KMLync Utility for Windows

In addition to the front panel buttons, keyboard hotkeys, and RS-232 serial commands described above, the Matrox KMLync can be configured through a simple GUI (Graphical User Interface): the *Matrox KMLync Utility for Windows*. This utility offers all the same customization options as the other control methods. You can download the *Matrox KMLync Utility for Windows* from the [Matrox website](#). This utility supports Microsoft Windows 10 and 11.

Display topology configuration

The Matrox KMLync has a configurable display topology that can be easily activated through keyboard hotkeys. No software or drivers are required to configure the display topology.

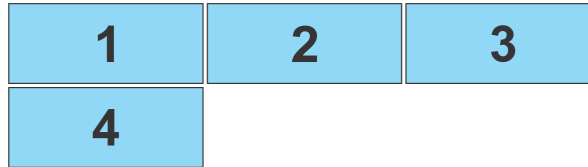
- Hotkey Command: “CTRL + CTRL + H + 4 + ENTER”



- Hotkey Command: “CTRL + CTRL + H + 2 + ENTER”



- Hotkey Command: “CTRL + CTRL + H + 3 + ENTER”



- Hotkey Command: “CTRL + CTRL + H + 1 + ENTER”



Using the Matrox KMLync Utility for Windows

To reconfigure the layout on the utility,

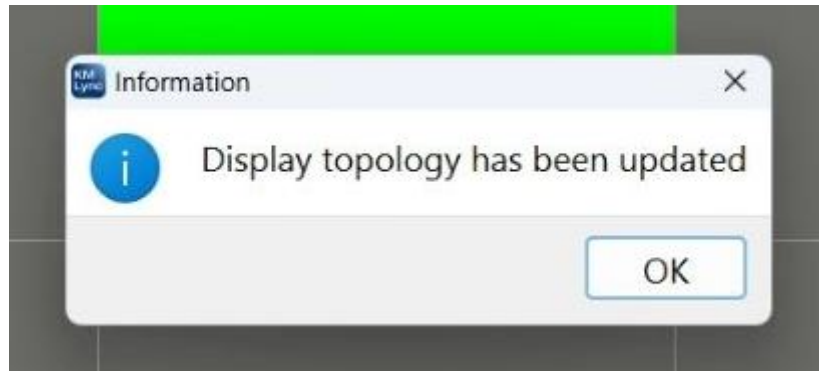
1. Click the **Layout** button in the left pane.



If the display has not been previously configured, the default configuration will appear. The channels are color coded: yellow for Channel 1, green for Channel 2, blue for Channel 3, and red for Channel 4.

2. Click and drag the tiles as needed. When done, click **Submit**.

You will see a confirmation that the topology has been updated.



Active ports configuration

The Matrox KMLync allows the user to shut off input from specific connected computers without the need to disconnect them from the switch.

Note: Limit Input Ports commands reset the Display Topology configuration.

Hotkey Commands: **CTRL**, **CTRL W (X)** commands (allows one row only):

- **CTRL + CTRL + W + 4 + ENTER**



- **CTRL + CTRL + W + 3 + ENTER**

Note: Port 4 N/A



- **CTRL + CTRL + W + 2 + ENTER**

Note: Port 3, 4 N/A



- **CTRL + CTRL + W + 1 + ENTER**

Note: Port 2-4 N/A

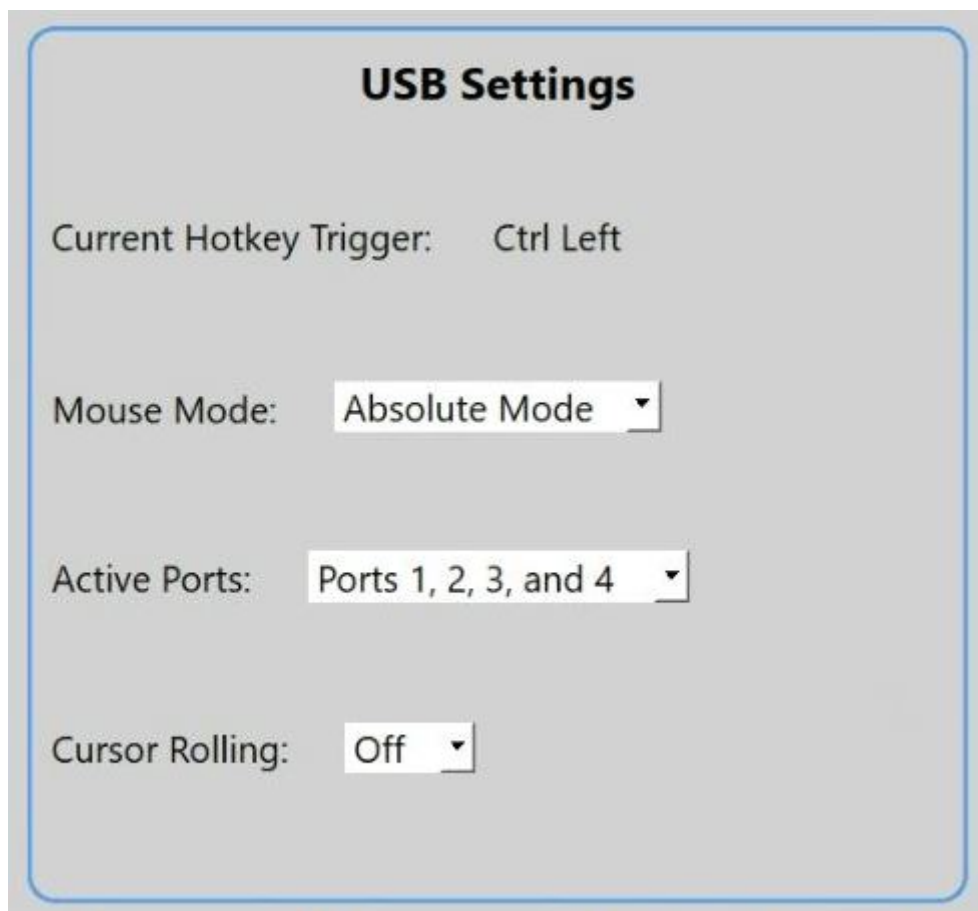


Using the Matrox KMLync Utility for Windows

1. Click the **Configuration** button.



2. Under **USB Settings**, click the **Active Ports** drop-down list, then select which port inputs you want to turn on or off.



3. Click **Apply**.

Resolution and mouse configuration only work in absolute mouse mode (//KS)

Note: Changing mouse mode from Absolute to Relative or vice versa, will reset your configuration settings.

DESCRIPTION	RS-232 COMMAND
Switch resolution	<code>//ce [SPACE] [PORT #] [SPACE] [resolution #] [ENTER]</code>
Mouse control speed (per resolution type)	<code>//mm [SPACE] [resolution #] [SPACE] [x #] [SPACE] [y #] [ENTER]</code>
Get resolution/mouse info	<code>//rl [ENTER]</code>

//CE [SPACE] [PORT #] [SPACE] [resolution #]

Where the port channel can be set 1-13 where Resolution number is the following:

1. 1080p
2. 4k
3. 2k
4. 3840x1080p(2x1)
5. 5760x1080p(3x1)
6. 7680x1080p(4x1)
7. 1920x2160p(1x2)
8. 1920x3240p(1x3)
9. 1920x4320p(1x4)
10. Custom1
11. Custom2
12. Custom3
13. Custom4

For example: **//CE 1 2**

In this example we are setting channel 1 to reference 4K resolution.

//MM [SPACE] [resolution #] [SPACE] [x integer # (1-100)] [y integer # (1-100)] For example: **//MM 2 80 50**

In this example we are setting the mouse movement according to 4K resolution with 80 as the mouse speed multiplier for X and 50 as the mouse speed multiplier for Y.

The integer number set for the mouse multiplier will act as a value from 1-100%.

In the example above we are using the following:

- 80 for X, therefore 80 will become 80% of the mouse movement moving horizontally on the X-axis.
- 50 for Y, therefore 50 will become 50% of the mouse movement moving vertically on the Y-axis.
- 100 will do 100%, 65 will do 65%, 5 will do 5%, etc.

Suppose you move the mouse 100 units for the X axis and 10 units for the Y axis. The software will change $100 * 80\% = 80$ units for the X axis and $10 * 50\% = 5$ unit for the Y axis. This will cause the mouse cursor to move slower.

//RL will return the channel's current mouse multiplier percentage and the current resolution which will reference the resolution number mentioned in the **//CE** command.

1. Click the **Mouse Speed Settings** button.

Custom Mouse Movement Settings
Mouse Speed Range is between 1-500

No	NAME	X	Y
C1	Custom1	100	100

Mouse Movement Resolution Settings

1	2	3	4
1080p	1080p	1080p	1080p

	X	Y	NAME
C1	100	100	Custom1
C2	100	100	Custom2
C3	100	100	Custom3
C4	100	100	Custom4

2. Each channel is represented by a dropdown menu.

Custom Mouse Movement Settings

Mouse Speed Range is between 1-500

№	NAME	X	Y	
C1	Custom1	100	100	Submit

Mouse Movement Resolution Settings

1
2
3
4

1080p	1080p	1080p	1080p
-------	-------	-------	-------

	X	Y	NAME
C1	100	100	Custom1
C2	100	100	Custom2
C3	100	100	Custom3
C4	100	100	Custom4

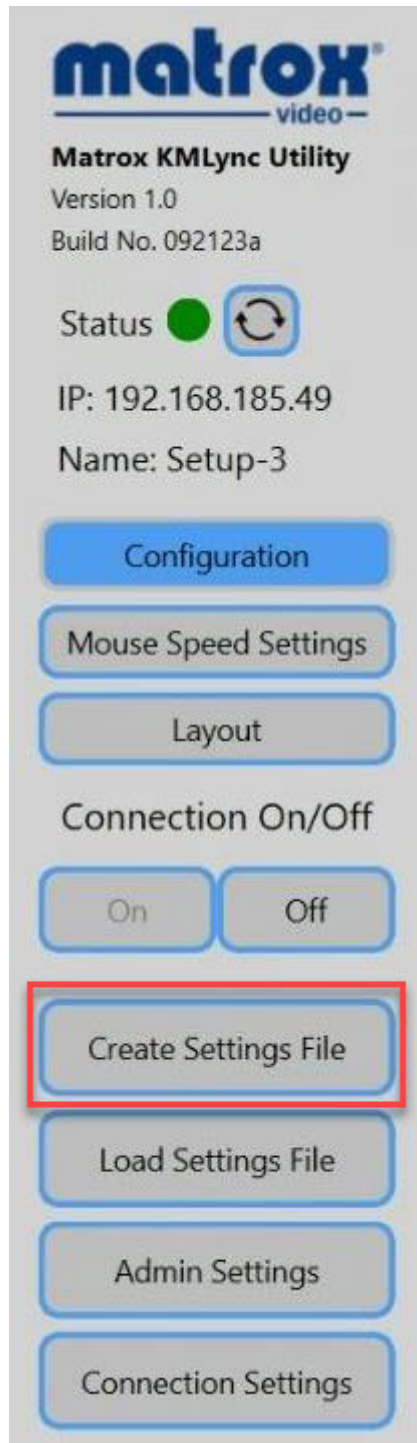
3. Follow the formula outlined in the previous section to calculate the desired mouse settings for each channel.
4. Click the X or Y fields for the desired channel and enter the mouse multiplier.
5. Click **Submit**.

Settings files

In addition to one-time adjustment of settings through any of the control methods, the user can establish a settings file through the GUI. This allows the user to restore a previous configuration with a single click instead of making each adjustment every time they log in.

Creating a settings file

1. Open the Matrox KMLync Utility.
2. Adjust the display configuration to your preferred settings.
3. Click **Create Settings File**.



4. This will open a standard dialogue box for saving a .txt file. Navigate to the desired folder and click **Save**.

Loading a settings file

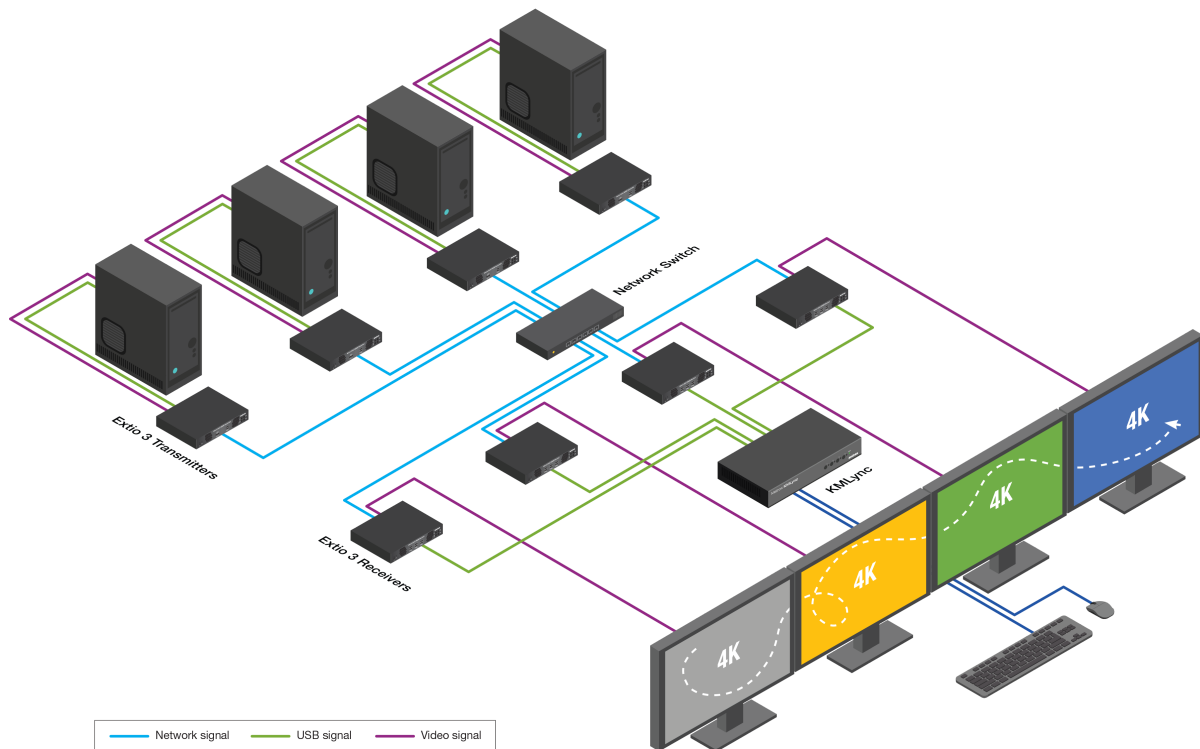
1. Open the Matrox KMLync Utility.
2. Click **Load Settings File**.



3. Select the desired settings file and click **Open**.

Connecting KMLync to Matrox Extio 3 devices

You can connect up to four Matrox Extio 3 devices to your KMLync as shown below.

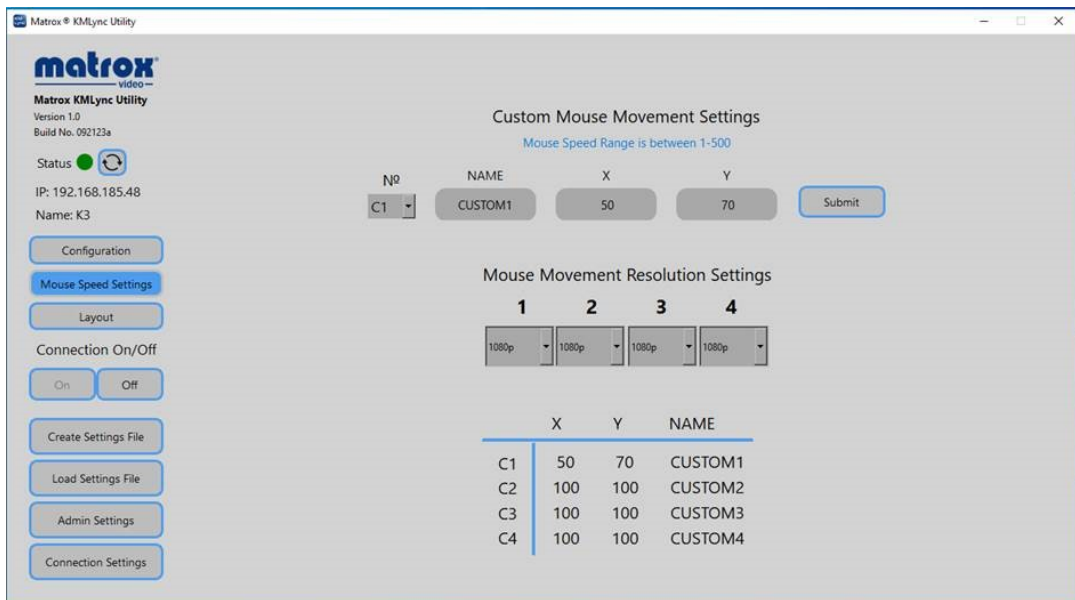


To configure this setup:

1. Connect your Extio 3 receivers to the Matrox KMLync device via the USB ports.
2. Connect a keyboard and mouse to Matrox KMLync.
3. Power on all devices.
4. Configure your Extio 3 device as needed. For more information, refer to the *Matrox Extio 3 Series User Guide* found on our [website](#).
5. Configure Matrox KMLync for your desired multi-monitor workflow.

For example:

1. To set up a 4 x 4k display configuration, go to the Matrox KMLync Utility for Windows.
2. Click on **Mouse Speed Setting**.



3. Under **Custom Mouse Movement Settings**, change **X** to **50**, and **Y** to **70**.
4. Click **Submit**.
5. Under **Mouse Movement Resolution Settings**, select the Extio 3 for each.

You have configured your KMLync device to work with Matrox Extio 3.

Troubleshooting

No power

- Make sure that the power adapter is securely connected to the power connector of the unit.
- Check the output voltage of the power supply and make sure that the voltage value is around 5VDC.
- Replace the power supply.

No video

- Check if all the video cables are connected properly.
- Connect the computer directly to the monitor to verify that your monitor and computer are functioning properly.
- Restart the computers.

Keyboard is not working

- Check if the keyboard is properly connected to the unit.
- Check if the USB cables connecting the unit and the computers are properly connected.
- Try connecting the USB on the computer to a different port.
- Make sure that the keyboard works when directly connected to the computer.
- Replace the keyboard.

Mouse is not working

- Check if the mouse is properly connected to the unit.
- Try connecting the USB on the computer to a different port.
- Make sure that the mouse works when directly connected to the computer.
- Replace the mouse.

Customer support

Matrox Video web

Our web site has product literature, press releases, technical material, a sales office list, trade show information, and other relevant material. Visit the Matrox Video Graphics web site at video.matrox.com.

Technical support

Matrox Video values your business and offers professional support for your Matrox Video product.

If your product was purchased through a Matrox Video dealer, contact your dealer for product support. This is the quickest and most effective method of technical assistance. Your dealer is familiar with your complete system.

If your product was purchased through Matrox Video, contact your Matrox Video representative or visit our technical support Web site at video.matrox.com/en/support.

Information we need

Please give a complete description of the problem, and include:

- Matrox product serial number, model number, revision number, and firmware number.
- Source specifications.
- Control system (the system running Extio Central Manager) specifications.
- Specific Extio Central Manager or OSD (On-Screen Display) options and features used.

View your warranty information

Matrox Video makes warranty information available on the Matrox Video site (video.matrox.com/en/support/warranty).

View the third party software notices

Matrox Video makes third party software notices and/or additional terms and conditions available on the Matrox Video site (<https://thirdpartylicenses.matrox.com>).

Register your Matrox Video product

Please register online (video.matrox.com/en/apps/registration) to be eligible for customer support, new product announcements, and information on special offers and upcoming events.

Compliance statements

USA

FCC Compliance Statement

Remark for the Matrox hardware products supported by this guide

This equipment has been tested and found to comply with the limits for a Class A digital device, pursuant to Part 15 of the FCC Rules. These limits are designed to provide reasonable protection against harmful interference when the equipment is operated in a commercial environment. This equipment generates, uses, and can radiate radio frequency energy and, if not installed and used in accordance with the instructions manual, may cause harmful interference to radio communications. Operation of this equipment in a residential area is likely to cause harmful interference in which case the user will be required to correct the interference at his own expense. **WARNING** Changes or modifications to this unit not expressly approved by the party responsible for the compliance could void the user's authority to operate this equipment. The use of shielded cables for connection of the monitor to the card is required to meet FCC requirements.

Canada

(English) Innovation, Science and Economic Development Canada

Remark for the Matrox hardware products supported by this guide These digital apparatus does not exceed the Class A limits for radio noise emission from digital devices set out in the Radio Interference Regulation of Industry Canada.

(Français) Innovation, Sciences et Développement économique Canada

Remarque sur les produits matériels Matrox couverts par ce guide Ce présent appareil numérique n'émet aucun bruit radioélectrique dépassant les limites applicables aux appareils numériques de Classe A prescrites dans le Règlement sur le brouillage radioélectrique édicté par Industrie Canada.

United Kingdom

United Kingdom user's information – Declaration of Conformity

Remark for the Matrox hardware products supported by this guide These devices comply with Directive UK SI 2016 No. 1091 relating to electromagnetic compatibility for a Class A digital device. They have been tested and found to comply with EN55032/CISPR32 and EN55035/CISPR35. In a domestic environment these products may cause radio interference in which case the user may be required to take adequate measures. To meet UK requirements, shielded cables must be used to connect the monitor and other peripherals to the card. These products have been tested in a typical class A compliant host system. It is assumed that these products will also achieve compliance in any class A compliant system.

Japan

VCCI Compliance Statement

Remark for the Matrox hardware products supported by this guide



This is a Class A product based on the standard of the Voluntary Control Council for Interference by Information Technology Equipment (VCCI). If this equipment is used in a domestic environment, radio disturbance may occur, in which case, the user may be required to take corrective actions.

この装置は、クラスA情報技術装置です。この装置を家庭環境で使用すると電波妨害を引き起こすことがあります。この場合には使用者が適切な対策を講ずるよう要求されることがあります。 VCCI-A

Korea

A급 기기 (업무용 방송통신기자재)

이 기기는 업무용(A급) 전자파적합기기로서 판 매자 또는 사용자는 이 점을 주의하시기 바라 며, 가정외의 지역에서 사용하는 것을 목적으로 합니다.

Europe (Declaration of Conformity)

(English) European user's information - Declaration of Conformity



Remark for the Matrox hardware products supported by this guide These devices comply with EC Directive 89/336/EEC 2004/108/EC 2014/30/EU for a Class A digital device. They have been tested and found to comply with EN55022/CISPR22 EN55032/CISPR32 and EN55035/CISPR35. In a domestic environment these products may cause radio interference in which case the user may be required to take adequate measures. To meet EC requirements, shielded cables must be used to connect the monitor and other peripherals to the card. These products have been tested in a typical class A compliant host system. It is assumed that these products will also achieve compliance in any class A compliant system.

(Français) Informations aux utilisateurs Européens - Déclaration de conformité

Remarque sur les produits matériels Matrox couverts par ce guide Ces unités sont conformes à la directive communautaire 2014/30/EU pour les unités numériques de classe A. Les tests effectués ont prouvé qu'elles sont conformes aux normes EN55022/CISPR22 EN55032/CISPR32 et EN55035/CISPR35. Le fonctionnement de ces produits dans un environnement résidentiel peut causer des interférences radio, dans ce cas l'utilisateur peut être amené à prendre les mesures appropriées. Pour respecter les impératifs communautaires, les câbles de connexion entre le moniteur ou autres périphériques et la carte doivent être blindés. Ces produits ont été testés dans un système hôte typique compatible classe A. On suppose qu'ils présenteront la même compatibilité dans tout système compatible classe A.

(Deutsch) Information für europäische Anwender - Konformitätserklärung

Anmerkung für die Matrox Hardware-Produktunterstützung durch dieses Handbuch Diese Geräte entsprechen EC Direktive 2014/30/EU für ein digitales Gerät Klasse A. Sie wurden getestet und entsprechen demnach EN55022/CISPR22 EN55032/CISPR32 und EN55035/CISPR35. In einer Wohnumgebung können diese Produkte Funkinterferenzen erzeugen, und der Benutzer kann genötigt sein, entsprechende Maßnahmen zu ergreifen. Um EG-Anforderungen zu entsprechen, müssen zum Anschließen des Monitors und anderer Peripheriegeräte an die Karte abgeschirmte Kabel verwendet werden. Diese Produkt wurden in einem typischen, der Klasse A entsprechenden, Host-System getestet. Es wird davon ausgegangen, daß diese Produkte auch in jedem Klasse A entsprechenden System entsprechend funktionieren.

(Italiano) Informazioni per gli utenti europei – Dichiarazione di conformità

Nota per i prodotti hardware Matrox supportati da questa guida Questi dispositivi sono conformi alla direttiva CEE 2014/30/EU relativamente ai dispositivi digitali di Classe A. Sono stati provati e sono risultati conformi alle norme EN55022/CISPR22 EN55032/CISPR32 e EN55035/CISPR35. In un ambiente domestico, questi prodotti possono causare radiointerferenze, nel qual caso all'utente potrebbe venire richiesto di prendere le misure adeguate. Per soddisfare i requisiti CEE, il monitor e le altre periferiche vanno collegati alla scheda grafica con cavi schermati. Questi prodotti sono stati provati in un tipico sistema host conforme alla classe A. Inoltre, si dà per scontato che questi prodotti acquisiranno la conformità in qualsiasi sistema conforme alla classe A.

(Español) Información para usuarios europeos – Declaración de conformidad

Observación referente a los productos de hardware de Matrox apoyados por este manual

Estos dispositivos cumplen con la directiva de la CE 2014/30/EU para dispositivos digitales de Clase A. Dichos dispositivos han sido sometidos a prueba y se ha comprobado que cumplen con las normas EN55022/CISPR22 EN55032/CISPR32 y EN55035/CISPR35. En entornos residenciales, estos productos pueden causar interferencias en las comunicaciones por radio; en tal caso el usuario deberá adoptar las medidas adecuadas. Para satisfacer las disposiciones de la CE, deberán utilizarse cables apantallados para conectar el monitor y demás periféricos a la tarjeta. Estos productos han sido sometidos a prueba en un típico sistema anfitrión que responde a los requisitos de la clase A. Se supone que estos productos cumplirán también con las normas en cualquier sistema que responda a los requisitos de la clase A.

Europe (WEEE Directive)

(English) European user's information – Directive on Waste Electrical and Electronic Equipment (WEEE)



Please refer to the Matrox Web site (www.matrox.com/environment/en/weee) for recycling information.

(Français) Informations aux utilisateurs Européens – Règlementation des déchets d'équipements électriques et électroniques (DEEE)

Se référer au site Web de Matrox (www.matrox.com/environment/en/weee) pour l'information concernant le recyclage.

(Deutsch) Information für europäische Anwender – Europäische Regelungen zu Elektro- und Elektronikgeräten (WEEE)

Bitte wenden Sie sich an der Matrox-Website (www.matrox.com/environment/en/weee) für Recycling-Informationen.

(Italiano) Informazioni per gli utenti europei – Direttiva sui rifiuti di apparecchiature elettriche ed elettroniche (RAEE)

Si prega di riferirsi al sito Web Matrox (www.matrox.com/environment/en/weee) per le informazioni di riciclaggio.

France

Avertissement sur l'épilepsie

À lire avant toute utilisation d'un jeu vidéo par vous-même ou votre enfant Certaines personnes sont susceptibles de faire des crises d'épilepsie ou d'avoir des pertes de conscience à la vue de certains types de lumières clignotantes ou d'éléments fréquents dans notre environnement quotidien. Ces personnes s'exposent à des crises lorsqu'elles regardent certaines

images télévisées ou qu'elles jouent à certains jeux vidéo. Ces phénomènes peuvent apparaître alors même que le sujet n'a pas d'antécédent médical ou n'a jamais été confronté à une crise d'épilepsie.

Si vous-même ou un membre de votre famille avez déjà présenté des symptômes liés à l'épilepsie (crise ou perte de conscience) en présence de stimulations lumineuses, veuillez consulter votre médecin avant toute utilisation.

Nous conseillons aux parents d'être attentifs à leurs enfants lorsqu'ils jouent avec des jeux vidéo. Si vous-même ou votre enfant présentez un des symptômes suivants: vertige, trouble de la vision, contraction des yeux ou des muscles, perte de conscience, trouble de l'orientation, mouvement involontaire ou convulsion, veuillez immédiatement cesser de jouer et consultez un médecin.

Précautions à prendre dans tous les cas pour l'utilisation d'un jeu vidéo Ne vous tenez pas trop près de l'écran. • Jouez à bonne distance de l'écran de TV et aussi loin que le permet le cordon de raccordement. • Utilisez de préférence les jeux de vidéo sur un écran de petite taille. • Évitez de jouer si vous êtes fatigué ou si vous manquez de sommeil. • Assurez-vous que vous jouez dans une pièce bien éclairée. • En cours d'utilisation, faites des pauses de dix à quinze minutes toutes les heures.

Trademarks

Trademarks • Marques déposées • Warenzeichen • Marchi registrati • Marcas registradas

Matrox Electronic Systems Ltd. /

Matrox Graphics Inc.....Matrox®, DualHead®, CenterWINDOW™, DVDMax™, GigaColor™, ASM™, ATC™, AuroraVX3mp™, AuroraVX™, Avio™, DFC™, DLC™, C-Series™, D-Series™, DualHead2Go™, Epica™, Equinox™, Extio™, G400™, G450™, G550™, GXM™, ICP™, Maevex™, Marvel™, MED2mp™, MED2mp-DVI™, MED3mp-DVI™, MED4mp™, MED5mp-DVI™, MED5mp™, Millennium™, MMS™, Multi-Monitor Series™, MultiDesk™, Mura™, MuraControl™, Mura IPX™, Mura MPX™, Mystique™, P650™, P650™ Low-profile, P690™, P750™, Parhelia™, Parhelia™ APVe, Parhelia-512™, Parhelia-LX™, Parhelia HR256™, PJ4OLP™, PowerDesk™, PowerSpace™, QID™, Quad Information Display™, RAD™, Quick Connect™, MaxVIEW™, MGA™, MGA-G100™, MGA-G200™, Onyx™, PixelTOUCH™, PrecisionCAD™, Precision SGT™, QuadHead2Go™, QuickDesk™, RAD2mp™, RAD3mp™, RAD9mp™, RAD PCI™, RAD PCIe™, RADQ2mp™, Rainbow Runner®, SonoVUE™, SPECTRUM™, TheatreVUE™, TripleHead™, TripleHead2Go™, VDA™, Veos™, Xenia™

Adobe Systems Inc.....Acrobat®, Reader®

Advanced Micro Devices, Inc.....AMD®

Apple Computer, Inc.....App Store®, Apple®, iPad®, Mac®, Mac OS®

Belden Inc.....Belden®

Dolby Laboratories, Inc.....Dolby®, Dolby Digital®

Facebook, Inc.....Facebook®

Google, Inc.....YouTube®

HDMI Licensing LLC.....HDMI®

Intel Corporation.....Intel®

International Business Machines.....IBM®, VGA®, IBM Video Streaming™ Ustream®

Macrovision Corporation.....Macrovision™

Linus Torvalds.....Linux®

LiveScale Technologies, Inc.....LiveScale™

Microsoft Corporation.....Active Directory®, Aero®, Direct3D®, DirectDraw®, DirectShow™®, DirectX™®, Microsoft®, MS-DOS®, PowerPoint®, WindowsST®, Windows NT®, Windows 2000™ (NOT A TRADEMARK), Windows Server®, Windows XP™ (NOT A TRADEMARK), Windows Vista®

NVIDIA Corporation.....NVIDIA®

Panopto, Inc.....Panopto™

PCI-SIG.....PCI™, PCI-X®, PCIe®, PCI Express®

Radio Corporation of America.....	RCA®
RealVNC Ltd.....	VNC®
Restream, Inc.....	Restream™
SD-3C, LLC.....	SD™, SDHC™, SDXC™
Silicon Graphics, Inc.....	OpenGL®
Silicon Image, Inc.....	PanelLink®, TMDS®
Twitch Interactive, Inc.....	Twitch™
U.S. Environmental Protection Agency.....	ENERGY STAR®
Video Electronics Standards Association.....	DisplayPort™
VideoLAN.....	VideoLAN®, VLC®, VLC®
media player	
Vimeo, LLC.....	Vimeo®
Wibu-Systems.....	WIBU®
Wowza Media Systems, LLC.....	Wowza™

Copyright © 1996-2020 VideoLAN. This logo or a modified version may be used or modified by anyone to refer to the VideoLAN project or any product developed by the VideoLAN team, but does not indicate endorsement by the project.

HTML5 Logo by World Wide Web Consortium (W3C). This HTML5 logo is licensed under this Public License (<http://www.creativecommons.org/licenses/by/3.0/legalcode>). The logo has been modified to meet the resolution and size required by this application.

(English) Registered trademarks are registered in the United States, Canada, and/or other countries. All other nationally and internationally recognized trademarks and tradenames are hereby acknowledged. • (Français) Les marques déposées sont déposées aux États-Unis, au Canada et/ou dans d'autres pays. Toutes les autres marques et tous les autres noms déposés reconnus nationalement ou internationalement sont également reconnus par les présentes. • (Deutsch) Die eingetragenen Warenzeichen sind in den USA, Kanada und/oder anderen Ländern registriert. Alle sonstigen national und international bekannten Warenzeichen und Produktnamen werden hiermit anerkannt. • (Italiano) I marchi registrati sono registrati negli Stati Uniti, in Canada e/o in altri paesi. Tutti gli altri marchi registrati e nomi commerciali riconosciuti a livello nazionale e internazionale sono ugualmente riconosciuti qui. • (Español) Las marcas registradas están registradas en los EE.UU., Canadá u otros países. Por medio del presente se reconocen todas las demás marcas y nombres comerciales reconocidos a nivel nacional e internacional.

Disclaimers

(English) Disclaimer

THE INFORMATION IN THIS GUIDE IS SUBJECT TO CHANGE AT ANY TIME AND WITHOUT NOTICE. Matrox Graphics Inc. reserves the right to make changes in specifications at any time and without notice. The information provided by this document is believed to be accurate and reliable at the time it is written. However, no responsibility is assumed by Matrox Graphics Inc. for its use, for its reproduction and/or distribution, in whole or in part; nor for any infringements of patents or other rights of third parties resulting from its use.

(Français) Responsabilité

LES INFORMATIONS CONTENUES DANS CE MANUEL PEUVENT ÊTRE MODIFIÉES EN TOUT TEMPS ET CE SANS PRÉAVIS.

Les Graphiques Matrox Inc. se réserve le droit de modifier les spécifications en tout temps et ce sans préavis quelconque. Les informations contenues dans ce manuel sont reconnues comme étant précises et fiables à la date de rédaction. Cependant, Matrox Graphics Inc. n'assume aucune responsabilité concernant leur utilisation, leur reproduction et/ou distribution, en tout ou en partie, ni leur contrefaçon de brevets ou de tout autre droit appartenant à des tiers résultant de leur utilisation. Aucune licence n'est accordée sur aucun brevet ou droit d'exploiter un brevet de Matrox Graphics Inc.

(Deutsch) Haftungsablehnungserklärung

DIE IN DIESEM HANDBUCH ENTHALTENEN ANGABEN UND DATEN KÖNNEN OHNE VORHERIGE ANKÜNDIGUNG GEÄNDERT WERDEN.

Die Matrox Graphics Inc. behält sich das Recht vor, jederzeit und ohne Ankündigung technische Daten zu ändern. Zum Zeitpunkt der Erstellung dieses Handbuchs sind die Inhalte korrekt und verlässlich. Weiterhin übernimmt Matrox Graphics Inc. keinerlei Verantwortung für die Benutzung dieses Handbuchs, die Vervielfältigung und/oder Verteilung im Ganzen oder zum Teil; weder für Verstöße gegen Patentrechte noch für andere Rechte Dritter, die aus seinem Gebrauch resultieren mögen. Es werden keinerlei Lizenzrechte gewährt für sämtliche Patente oder Patentrechte der Matrox Graphics Inc.

(Italiano) Discrezionalità

LE INFORMAZIONI CONTENUTE NEL PRESENTE DOCUMENTO SONO SOGGETTE A MODIFICHE IN QUALUNQUE MOMENTO E SENZA PREAVVISO.

Matrox Graphics Inc. si riserva il diritto di apportare variazioni di qualunque tipo alle specifiche tecniche in qualunque momento e senza alcun preavviso. Le informazioni contenute in questa documentazione sono ritenute corrette e attendibili al momento della pubblicazione. In ogni caso, non è imputabile a Matrox Graphics Inc. nessuna responsabilità per il loro utilizzo, per la loro distribuzione e/o riproduzione completa o in parte, come nessuna violazione a brevetti o diritti di altri produttori derivante dal loro utilizzo.

(Español) Renuncia

LA INFORMACION QUE CONTIENE EL PRESENTE MANUAL ESTA SUJETA A CAMBIOS SIN PREVIO AVISO EN CUALQUIER MOMENTO.

Matrox Graphics Inc. se reserva el derecho de realizar modificaciones en cualquier momento y sin previo aviso. La información facilitada en este documento se considera que es exacta y fiable hasta la fecha de publicación. Sin embargo, Matrox Graphics Inc. no asume ninguna responsabilidad por su uso, por su reproducción y/o distribución parcial o total; ni por cualquier infracción de patentes u otros derechos de terceras partes derivados de su uso. No se concede ninguna licencia bajo cualesquiera patentes o derechos de patentes de Matrox Graphics Inc.