



# **Matrox™ Maevox™ Series Firmware Updater**

20180-401-0460  
September 4, 2018

[www.matrox.com/graphics](http://www.matrox.com/graphics)

**matrox®**  
Graphics for Professionals

## Table of contents

<b>1</b>	<b>Overview .....</b>	<b>3</b>
1.1	Supported operating systems .....	3
1.2	Supported MaeveX hardware .....	3
1.3	Before you update your firmware.....	3
1.4	Obtaining the Matrox MaeveX Series firmware updater package .....	4
<b>2</b>	<b>Updating your Matrox MaeveX Series firmware .....</b>	<b>5</b>
<b>3</b>	<b>Using a custom splash screen .....</b>	<b>8</b>
<b>4</b>	<b>Notes .....</b>	<b>9</b>
<b>5</b>	<b>Disclaimer .....</b>	<b>10</b>
5.1	View the third party software notices.....	10

## 1 Overview

The Matrox MaeveX Series Firmware Updater enables you to update the firmware of your Matrox MaeveX 6100 Series and MaeveX 5100 Series products, and to use a custom splash screen for your MaeveX Series products.

**Note:** Your Matrox MaeveX Series product may ship with an older firmware version. Before using your MaeveX Series product, you must update the firmware version installed on your devices to use the version of your deployed release. All MaeveX Series devices on a MaeveX network must use the same version of the firmware package. The version of your firmware package must also match the version of your PowerStream or PowerStream Plus software package.

### 1.1 Supported operating systems

The Matrox MaeveX Firmware Updater supports the following operating systems:

- Windows® 10 (64-bit)
- Windows® Server® 2016
- Windows® 7 (32-bit, 64-bit)
- Windows® Server® 2008 R2

### 1.2 Supported MaeveX hardware

The Matrox MaeveX Firmware Updater supports the following MaeveX hardware:

#### **MaeveX 6100 Series** –

- MaeveX 6150 encoders
- MaeveX 6120 encoders
- MaeveX 6100 encoders

#### **MaeveX 5100 Series** –

- MaeveX 5150 encoders
- MaeveX 5150 decoders

### 1.3 Before you update your firmware

Before you update the firmware on your MaeveX Series devices, read the following guidelines:

- Make sure you have at least 1 GB of free disk space available.

- To avoid possible problems with your MaeveX Series devices, we recommend running only one instance of the MaeveX Series firmware updater on your network at a time.
- Make sure you're running the latest version of the Matrox MaeveX Series Firmware Updater.
- Make sure Microsoft® .NET Framework version 4.5.x is installed on your system.
- Make sure you have a DHCP (Dynamic Host Configuration Protocol) server on an established network. The firmware updater requires constant IP addresses to update the devices properly. As the firmware updater requires a device to reboot multiple times, make sure your DHCP server maintains the IP address of a device when it reappears on the network. Otherwise, we recommend assigning fixed IP addresses to your devices.
- Make sure the version of Matrox PowerStream Plus software installed on your controller system corresponds to the firmware version you installed.
- Close any programs that may be running (such as PowerStream).
- If your system doesn't have access to a DNS server, configure your system to use a fixed IP address (such as local host – 127.0.0.1) as its DNS server. Otherwise, the firmware update process may take a long time to complete. For more information, see your Matrox MaeveX Series User Guide.
- Stop all encoding and decoding processes on your MaeveX Series devices.

## 1.4 Obtaining the Matrox MaeveX Series firmware updater package

- Matrox makes the latest firmware and updater package for your MaeveX Series products available on the Matrox web site ([www.matrox.com/maevexsw](http://www.matrox.com/maevexsw)).
- Download the latest firmware package and extract the files to a local folder on your system (for example, C:\MaeveXFirmwareUpdate).

## 2 Updating your Matrox MaeveX Series firmware

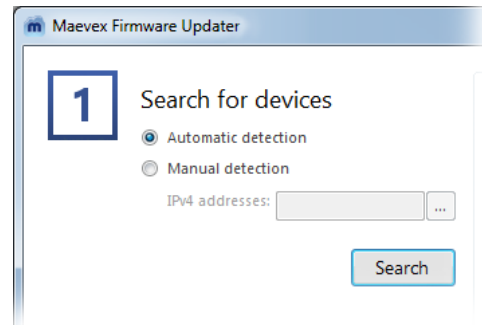
### 1 Run the MaeveX Firmware Updater

Browse to the folder containing the extracted files, then run the *FirmwareUpdater.exe* file. This opens the MaeveX Firmware Updater.

### 2 Search for available MaeveX Series devices

To search for MaeveX Series devices on your subnet, select **Automatic detection**, and then click **Search**.

To locate one or more MaeveX Series devices using their IP address, select **Manual Detection** and enter the IP address of each MaeveX Series device you want to locate. Separate each IP address with a space.

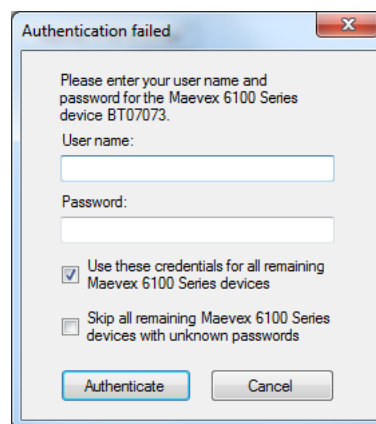


You can also click the browse icon (...), enter one IP address per line, then click **Apply** once all addresses are entered. When you're done, click **Search**.

Clicking **Search** again adds newly located devices to the list.

### 3 Authenticate the devices found

If you provided a password for your MaeveX Series devices, you may be prompted to authenticate the devices found. If you're prompted, depending on the device type, enter your **User name** and **Password** or the **Environment password** for the MaeveX Series devices found.



MaeveX 6100 Series device authentication

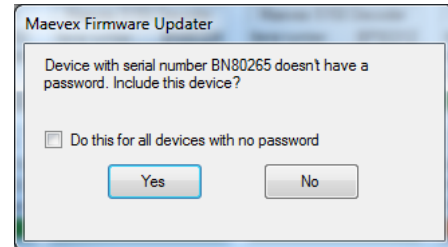


MaeveX 5100 Series device authentication

- If you're updating multiple MaeveX Series devices, enable the **Use these credentials for all remaining MaeveX Series devices** check box.
- If you don't know the password of some of the MaeveX Series devices on your network, enable **Skip all remaining MaeveX Series devices with unknown passwords**. Enabling this option ignores the MaeveX Series devices that don't use any of the passwords already entered. Any skipped devices won't be available for update.

When you're done, click **Authenticate**.

**Note:** If the configuration of your MaeveX Series device was reset, the password of your device was reset and the device will be detected as having no password. In this case, you'll be prompted to include that device in the list of devices to update. Clicking **Yes** updates the firmware of devices with no password.



#### 4 Select the devices to update

Select the devices you want to update. Devices with an older firmware version are automatically selected.

You can only select devices for which you have been authenticated. Boxes for these devices have a green status bar. Boxes for devices that are **View only** have an orange status bar.

To change the sort order of the device tiles, right-click the device list box, select **Sort by** and the sorting order to use. To deselect all items, right-click the device list box and select **Unselect all devices**.

#### 5 Enable update options

To reset device settings, including the IP address and password, while updating the firmware, enable **Reset configuration**.

#### 6 Update the firmware

When you're done adding MaeveX Series devices to the list of devices you want to update, click **Update**.

Updating devices may take up to 20 minutes. For more information on the process of a firmware update, click **Show log** (▼) at the bottom of the program window.

**MaeveX 5100 Series** – If you're updating a MaeveX 5100 Series device and the firmware update is suddenly interrupted (for example, in the event of a network interruption or system crash), the device may not be fully updated

and will continue to run in maintenance mode. To recover and resume the update, re-launch the firmware updater.

### 3 Using a custom splash screen

The Firmware Updater enables you to use a custom splash screen for your MaeveX Series products with output support.

- 1 Browse to the folder containing the extracted files.
- 2 **MaeveX 5150** – Replace the *Encoder.bmp* and *Decoder.bmp* files in the folder with your own BMP file.

The image must use a resolution of 720 x 480, 24 bpp. The new image files must be BMP format and must be named *Encoder.bmp* and *Decoder.bmp*.

**MaeveX 6150/6120** – Replace the *ssimage.ppm* file in the folder with your own image file.

The image must use a resolution of 1280 x 720, 24 bpp. The new image file can be, in order of priority, PPM (ASCII), BMP, JPG, or PNG format and must be named *ssimage* with the correct file name extension. The firmware updater uses the first image file found, in order of priority.

- 3 Run the *FirmwareUpdater.exe* file.
- 4 Update the firmware of your devices (see “Updating your Matrox MaeveX Series firmware”).



## 4 Notes

- **MaeveX 5100 Series only** – The PowerStream API (version 1.05.03) is fully compatible with the firmware version provided in this package. Using the PowerStream API requires the installation of PowerStream software (version 1.05.03 or newer). For more information, see “Matrox PowerStream API Programming reference.”

## 5 Disclaimer

Information in this document may contain technical inaccuracies or typographical errors. Information may be changed or updated without notice. Matrox reserves the right to make improvements and/or changes in the products, programs and/or specifications described in this information at any time without notice.

Microsoft and Windows are either registered trademarks or trademarks of Microsoft Corporation in the United States and/or other countries.

Copyright © 2018 Matrox is a trademark of Matrox Electronic Systems Ltd. All rights reserved.

### 5.1 View the third party software notices

Matrox makes third party software notices and/or additional terms and conditions available on the Matrox site ([thirdpartylicenses.matrox.com](http://thirdpartylicenses.matrox.com)).

## Contact us

The Matrox web site has product literature, press releases, technical material, a sales office list, trade show information, and other relevant material. Visit us at [www.matrox.com/graphics](http://www.matrox.com/graphics).

If you have any questions or comments about our products or solutions, contact us at [www.matrox.com/graphics/contact](http://www.matrox.com/graphics/contact).

Matrox values your business and offers professional support for your Matrox product. For more information, contact your Matrox representative or our technical support at [maevexsupport@matrox.com](mailto:maevexsupport@matrox.com).