



# User's Guide





Software Delivery Assistant, Version 1.2



# User's Guide

**Software Delivery Assistant, Version 1.2**

September 2000

**© Copyright International Business Machines Corporation 2000. All rights reserved.**

US Government Users Restricted Rights – Use, duplication or disclosure restricted by GSA ADP Schedule Contract with IBM Corp.

---

# Contents

<b>Chapter 1. Installing and Starting Software Delivery Assistant</b> . . . . .	1
System requirements . . . . .	1
Installing Software Delivery Assistant . . . . .	1
Starting Software Delivery Assistant. . . . .	1
Uninstalling Software Delivery Assistant . . . . .	1
<b>Chapter 2. Using Software Delivery Assistant</b> . . . . .	3
Overview . . . . .	3
Gathering information . . . . .	3
Creating a workspace . . . . .	3
Translating the SDA image text . . . . .	4
Previewing the SDA image. . . . .	4
Building the SDA image . . . . .	4
Downloading the SDA image to users' computers . . . . .	4
Starting the SDA image on users' computers. . . . .	4
Installing software onto users' computers . . . . .	4
Automating group selection . . . . .	5
Getting started . . . . .	5
Getting familiar with the workspace . . . . .	5
Naming the workspace. . . . .	6
Selecting languages. . . . .	6
Specifying groups. . . . .	6
Specifying user-profile fields . . . . .	6
Opening an existing workspace . . . . .	6
Importing a workspace from an existing SDA image . . . . .	6
Toolbar buttons . . . . .	6
Menu options . . . . .	7
File . . . . .	7
Edit . . . . .	7
View . . . . .	8
Insert. . . . .	8
Application insertion properties . . . . .	10
Image . . . . .	14
Preview . . . . .	14
Build . . . . .	14
Report . . . . .	14
Image properties . . . . .	15
Translation . . . . .	20
Send. . . . .	20
Receive . . . . .	20
Window. . . . .	20
Starting the SDA-Installer on the user's computer . . . . .	20
Create an entry in the RunOnce registry key . . . . .	20
Create a shortcut in the Startup folder . . . . .	20
Allow the user to run SDA-Installer. . . . .	21
Running the SDA-Installer with Windows NT . . . . .	21
Tasks. . . . .	21
Creating a new workspace . . . . .	21
Specifying groups. . . . .	22
Specifying user-profile fields . . . . .	22
Opening an existing workspace . . . . .	22
Importing a workspace from an existing SDA image . . . . .	23
Adding languages to a workspace . . . . .	23
Adding groups to a language . . . . .	23

Adding subgroups to a group . . . . .	23
Adding applications to a group or subgroup. . . . .	24
Adding user-profile fields . . . . .	24
Creating a preview SDA image . . . . .	24
Creating a new SDA image from an existing SDA image . . . . .	25
Updating multiple applications . . . . .	25
Disabling the optional-installation portion of the SDA-Installer . . . . .	26
Translating group names and user-profile field names . . . . .	26
Extracting text for translation . . . . .	26
Integrating translated text . . . . .	26
<b>Index . . . . .</b>	<b>27</b>

---

# Chapter 1. Installing and Starting Software Delivery Assistant

This section contains instructions for installing and starting Software Delivery Assistant (SDA) version 1.2.

---

## System requirements

SDA version 1.2 requires one of the following Microsoft® operating systems:

- Windows® 95
  - Windows® 98
  - Windows NT® 4.0
  - Windows 2000
  - Windows Millennium Edition
- 

## Installing Software Delivery Assistant

Do the following to perform an attended installation of Software Delivery Assistant on a server, console, or client running Windows NT or Windows 98:

1. Download the program from the following IBM web page: <http://www.ibm.com/pc/>.
  2. From the Windows Start menu, click **Run**.
  3. In the **Open** field, type:  
*drive\_letter:\directory\sda12.exe*  
where *drive\_letter* and *directory* are the drive and directory where the installation program is located.
  4. Click **OK** to start the installation program.
  5. In the Welcome window, click **Next** to continue the installation.
  6. Click **Next**.  
The Software Delivery Assistant Installer installs the program files.
  7. The Setup Complete window opens when the installation is complete. Click **Finish** to confirm.
- 

## Starting Software Delivery Assistant

You can start SDA with one of these methods:

- Click **Start** → **Programs** → **IBM Software Delivery Assistant v1.2**.
  - Double-click the SDAassist.exe file located within C:\Program Files\SDAv12\SDAassist.exe.
- 

## Uninstalling Software Delivery Assistant

To remove Software Delivery Assistant from your system, do the following:

1. Click **Start** → **Settings** → **Control Panel**.
2. Double-click **Add/Remove Programs**.
3. Select the **Software Delivery Assistant** program name from the Install/Uninstall list.

4. Click **Add/Remove**.
5. In the Confirm File Deletion window, click **Yes**.
6. Click **OK**.



---

## Chapter 2. Using Software Delivery Assistant

IBM Software Delivery Assistant (SDA) helps with the deployment of a single application set that you can use across an entire organization. SDA can create a single common application set that you can deploy to all users, regardless of their operating system, language, hardware configuration or business group (for example, marketing, development, or finance).

With SDA, you package all of the unique application sets, based on business groupings within your enterprise into a single installation SDA image. You can then combine this image with a base SDA image, which contains an operating system, device drivers, and core applications (such as antivirus tool), to form a common superimage that can be deployed to all users regardless of what business group they are in.

SDA consists of two parts:

- SDA-Administrator
- SDA-Installer

You, the administrator, use SDA-Administrator to create an SDA image. Users use SDA-Installer to install their application sets onto their computers from the SDA image that you create. You can also set up SDA-Installer to run automatically on the end users' computers.

---

### Overview

The following topics present an overview of the IBM SDA process.

### Gathering information

Have the following information available before you begin:

- The operating systems that the SDA image will support. The SDA-Administrator can be used to create SDA images that support Microsoft Windows 95, Windows 98, Windows NT 4.0, Windows 2000, and Windows Millennium Edition.
- The languages that the SDA image will support, which includes what language version of Windows you will be deploying.
- The groups for which different suites of applications are needed. For example, groups could include your company's managers, marketing department, or payroll division.
- The user-profile fields that you want to define. At a minimum, you must have a group user-profile field, so that the user can indicate which suite of applications is to be installed.

### Creating a workspace

A workspace (files with the .SSW extension) contains all the information that is required to build an SDA image. You can create a new workspace, or you can import a workspace from an SDA image that was previously built to create a new workspace. The SDA image creation wizard guides you through the process of setting up a new workspace. The workspace interface resembles the Microsoft Windows Explorer interface. You can edit this workspace to add, copy, move, or delete languages, groups, and applications to the workspace.

## Translating the SDA image text

You can translate the group names and user-profile field names into the different languages for the SDA image. The SDA-Administrator extracts the text from the workspace into files that you can send to your translators. When you receive the translations, reintegrate this translated text into your workspace.

The user-profile field names and group names can also be presented in different languages.

## Previewing the SDA image

To verify that you have specified the correct information in the workspace to create the SDA image that you want, you can run a preview of the SDA image.

Previewing the image does not actually install any applications but instead simulates the installation by showing which applications will be installed for a selected business group.

## Building the SDA image

When you are certain that you have specified the correct information in the workspace, build the SDA image. Building the SDA image installs programs for all the applications for deployment onto users' computers.

## Downloading the SDA image to users' computers

After you build the SDA image, download the SDA image to each user's computer (through a tool such as IBM LANClient Control Manager™, PowerQuest Drive Image, or Norton Ghost). You can also copy the SDA image to a CD for distribution. Users can access the SDA image through the SDA-Installer to install their application suites, or you can set the SDA-Installer to automatically install the required applications.

## Starting the SDA image on users' computers

The user can start the SDA-Installer by running `swselect.exe` in the SDA image after the computer has been restarted.

## Installing software onto users' computers

The first time SDA-Installer runs, the program prompts the user to select one of the business groups that are defined in the SDA workspace. After the user selects a business group, the SDA-Installer installs the required applications from the Common group and the user's selected business group.

You can set up the SDA image to do one of the following after the required applications are installed:

- Remove the SDA image from the user's hard disk to free up space (if the SDA image is on the user's hard disk).
- Leave the install packages for required and optional applications in either the Common group or the user's selected business group. All other install packages will be removed from the user's hard disk to free up space.
- Leave the install packages for optional applications in either the Common group or the user's selected business group. All other install packages will be removed from the user's hard disk to free up space.
- Remove all of the install packages for all applications in the SDA-image to free up disk space, and enable the user to selectively install additional applications from another SDA image on an attached network drive (or can be a second SDA image on the user's hard disk).

## Automating group selection

At a minimum, you must have a group user-profile field in the SDA image so that a user can indicate which suite of applications is to be installed. If you prefer, you can enable the SDA-Installer to bypass the user-profile fields and automatically determine the user's group, preventing the user from selecting the wrong group.

Normally, when SDA-Installer runs the first time, the end-user is prompted to select their business group to allow the correct application set to be installed. If you do not want the end-user to select their business group (to avoid the mistake of selecting the wrong business group), you can automate the group selection which bypasses the user profile prompt.

You can do this one of two ways:

1. Create a group entry in the C:\SDAPROF.INI. The entry must contain the following:

```
[User Information]
```

```
Group=groupname
```

where *groupname* is the name of the user's group.

For example:

```
[User Information]
```

```
Group=Finance
```

2. Create a group entry in the following Registry key:

```
[HKEY_CURRENT_USER\SOFTWARE\IBM\SS]
```

```
"Group"="groupname"
```

where *groupname* is the name of the user's group.

For example:

```
[HKEY_CURRENT_USER\SOFTWARE\IBM\SS]
```

```
"Group"="Finance"
```

In both cases, you can manually create the Group entry or you can create a 32-bit program, called GROUPCHK.EXE, to create the Group entry for you. SDA-Installer has a programmatic hook built in to look for the GROUPCHK.EXE program in the SDA-Image directory. This allows you to create your own Group decision logic for determining an end user's business group.

**Note:** GROUPCHK.EXE must be in the root directory of the SDA-Image, where SWSELECT.EXE exists.

---

## Getting started

After you compile your system and workspace information, you can create (or import) the workspace. Before you begin, make sure that you have all the necessary information for your workspace.

If you want to permanently hide the Software Delivery Assistant - Administrator window, select the **Do not show this window again** check box when the window opens. Until you do this, the window opens whenever you start the program.

## Getting familiar with the workspace

The SDA-Administrator builds and displays the workspace. The workspace interface resembles the Microsoft Windows Explorer interface. The left pane of the window displays the structure of the workspace, with each group listed within each language.

Each language contains its own set of user-profile fields, which you can modify. In addition, each language contains a Common group and one or more other groups. Furthermore, each group can contain one or more subgroups.

The right pane of the SDA-Administrator window displays the contents of the item that you highlight in the left pane of the window.

**Note:** You must save the workspace file before you exit from the SDA-Administrator. Click **File** → **Save** or **File** → **Save As** and save the file as you would any other file.

### **Naming the workspace**

Give the workspace a descriptive name in the **Workspace name** field.

### **Selecting languages**

Select each language that you want the SDA image to support. These languages must correspond to the language versions of the operating systems that you are deploying.

### **Specifying groups**

A group is a set of applications specific to a particular organization, job, or discipline in your enterprise. (For example, in a university setting, groups might include the Schools of Journalism, Dentistry, and Business). List the groups that you want the SDA image to support. The list of groups must contain the Common group, which contains the applications that are used by all groups.

### **Specifying user-profile fields**

Create the user-profile fields that you want the users to complete the first time they install the SDA image. (For example, a user-profile field might be an employee ID, or a location.)

## **Opening an existing workspace**

You can use an existing workspace that has not yet been used to build an SDA image by clicking **File** → **Open** and navigating to the existing workspace. You can then rename the workspace to create a new workspace and modify it as necessary.

## **Importing a workspace from an existing SDA image**

You can create a new workspace from an existing SDA image by importing a workspace from the existing SDA image. You can then modify the workspace to create a new SDA image. The SDA-Administrator will use installation (setup) files from the existing SDA image rather than from the locations from which the files were originally obtained when the existing SDA image was built.

The SDA-Administrator imports the new workspace as the active workspace. You can edit the workspace to add applications to the groups and add, copy, move, and delete items in the workspace. Information and error messages for the import process are displayed in the information panel.

---

## **Toolbar buttons**

From left to right, you find these toolbar buttons:

### **New**

Click this button to create a new workspace. Using this option is the same as clicking **File** → **New**.

**Open**

Click this button to open an existing workspace. Using this option is the same as clicking **File** → **Open**.

**Save**

Click this button to save the active workspace. Using this option is the same as clicking **File** → **Save** or **File** → **Save As**.

**Cut**

Click this button to delete the selected item from the workspace and copy it to the Clipboard. Using this option is the same as clicking **Edit** → **Cut**.

**Copy**

Click this button to copy the selected item to the Clipboard. Using this option is the same as clicking **Edit** → **Copy**.

**Paste**

Click this button to copy the contents of the Clipboard to the selected item. Using this option is the same as clicking **Edit** → **Paste**.

**Information panel**

Click this button to show or hide the information panel, which displays the results of build, import, and translation send and receive processes.

**Help**

Click this button to display help for the SDA-Administrator.

---

## Menu options

Use the following menu options to manipulate the SDA workspaces.

### File

You can use the File menu options to create, open, or import workspaces.

**New**

Click this option to create a new workspace. Using this option is the same as clicking the **New** button on the toolbar.

**Open**

Click this option to open an existing workspace. Using this option is the same as clicking the **Open** button on the toolbar.

**Import**

Click this option to import a workspace from an existing SDA image.

### Edit

The Edit menu options resemble the editing options in many Microsoft Windows applications.

**Selected object**

Click this option to change the name of a workspace.

**Delete**

Click this option to delete the selected language, group, or application.

**Cut**

Click this option to delete the selected language, group, or application and save it to the Clipboard. Clicking this option is the same as clicking the **Cut** button on the toolbar.

**Copy**

Click this option to copy the selected item to the Clipboard. Clicking this option is the same as clicking the **Copy** button on the toolbar.

### **Paste**

Click this option to copy the contents of the Clipboard to the selected item. Clicking this option is the same as clicking the **Paste** button on the toolbar.

### **Find and update**

Click this option to propagate a property change to many applications. For example, you might want to change the location of the installation source files for one or more applications within multiple groups and languages.

For more information updating applications, refer to “Updating multiple applications” on page 25.

## **View**

You can use the View menu options to change the appearance of the SDA-Administrator window.

### **Toolbar**

Click this option to show or hide the toolbar.

### **Status bar**

Click this option to show or hide the status bar at the bottom of the SDA-Administrator window. The status bar displays the function of a highlighted menu item.

### **Information panel**

Click this option to show or hide the information panel at the bottom of the SDA-Administrator window. The information panel displays the results of build, import, and translation send and receive processes.

### **Operating systems**

Click this option to display applications for one operating system only. You can choose to display applications for Microsoft Windows 95, Windows 98, Windows NT 4.0, Windows 2000, or Windows Millennium Edition.

## **Insert**

Use the following menu options to insert a language, group, subgroup, application, or profile field into an SDA image.

### **Language**

Click this option to add one or more languages to a workspace.

In the left pane of the SDA-Administrator window, click the workspace name and then click the **Insert** → **Language** menu option. Or you can right-click the workspace name and click **Insert language**.

In the Insert language window, click the languages that you want to add to the workspace, and click **OK**.

### **Group**

Click this option to add a group to a language in a workspace.

In the left pane of the SDA-Administrator window, click the language to which you want to add a group, and then click the **Insert** → **Group** menu option. Or you can right-click the language, and click **Insert group**. In the Insert group window, type the name of the new group, and click **OK**.

You can also assign a password to each group. After an image is deployed, the user must type the password for the selected group to be installed.

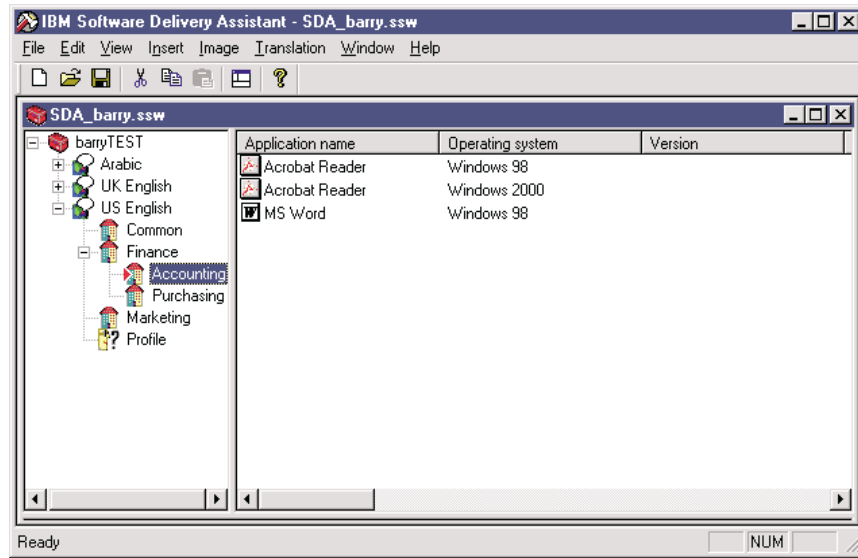
When adding a group to an SDA workspace in the Insert group window, type the password in the **Password** field. You can also modify a group-assigned password by right-clicking the group and clicking the **Edit** option.

## Subgroup

Click this option to create application subgroups within a group. This eases the complexity of managing large numbers of groups by enabling you to structure a hierarchy within a group.

For example, you might have different divisions within your enterprise. Within each division, unique business groups may require unique application sets. SDA enables you to create a group for each division and subgroups within each group.

The following illustrates how SDA manages groups and subgroups:



The following rules apply to adding groups and subgroups:

- Languages can contain groups and user-profile fields.
- Groups can contain subgroups and applications.
- Subgroups can contain only applications. Subgroups cannot contain other subgroups.
- If you copy a subgroup into a language, the subgroup is converted into a group.
- If you copy a group into another group, the group is converted into a subgroup.

## Application

Click this option to add an application to a group or subgroup within a language.

In the left pane of the SDA-Administrator window, click the group or subgroup to which you want to add an application, and then click **Insert** → **Application**. Or you can right-click the group and click **Insert application**. In the Insert application window, specify information about the application. When you are finished specifying the necessary information on each tab, click **OK**.

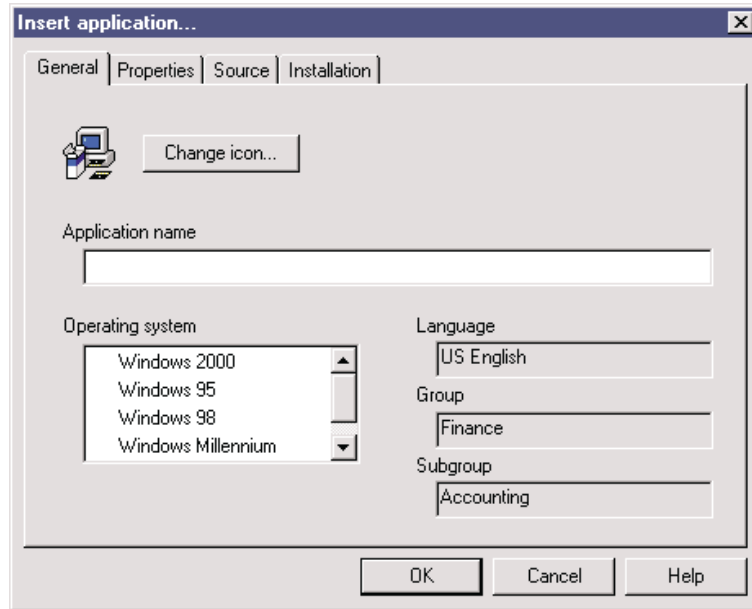
## Profile field

Click this option to add a user-profile field within a language. A user-profile field helps identify the user who installs the software from SDA. In the User profile window that opens, you can designate the field as Required, meaning that the user must complete it. You can also define the field size in characters and list valid entries from which the user selects.

## Application insertion properties

You can add applications to the workspace in the Insert application window.

**General:** Use the fields in the **General** tab to specify basic information about an application.



### Change icon

This optional feature allows you to use an icon other than the default icon. Click the **Change icon** button and browse to the file (usually an .EXE, .ICO, or .DLL file) that is associated with the application you are adding. Click the files, and click **Open**. You can select one of the icons that are displayed. The system associates the icon that is displayed in the **General** tab with the application in the SDA image.

Sample icons are also included with SDA-Installer.

### Application name

You must type the name of the application in this required field as you want it to be displayed in the SDA image.

### Operating system

You must select the operating system in which the application will be deployed.

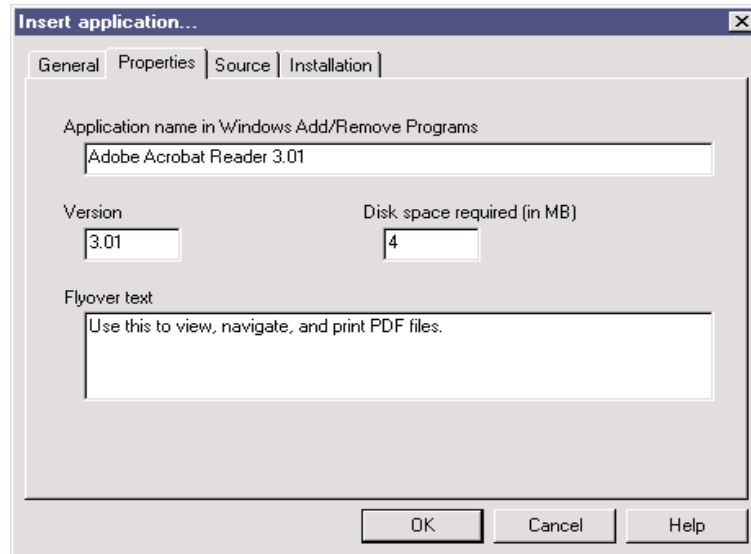
**Note:** If different operating systems require different versions of an application, you must add them to the workspace separately.

### Language and Group

These fields display the language and group to which the application belongs. You cannot change these fields in the **General** tab.

**Properties:** All the items in the **Properties** tab provide the data that is displayed in the optional-installation portion of the SDA-Installer. These optional items are applicable only if you specify that the entire SDA image is to be left on the user's hard disk after SDA installs the required applications.





### **Application name in Windows Add/Remove Programs**

If you want users to be able to uninstall the application through the SDA-Installer, type the name of the application exactly as it will appear in the Windows Add/Remove Programs window.

### **Version**

Type the version number of the application as you want it to appear in the SDA-Installer.

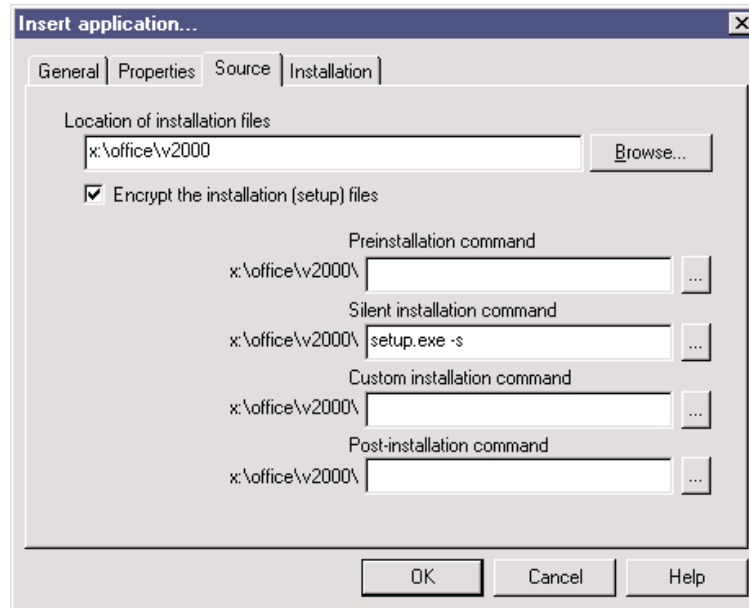
### **Disk space required (in MB)**

Type the approximate amount of disk space that a typical installation of the application requires. This value is only displayed in the SDA-Installer; the information is not used by any program.

### **Flyover text**

Type a brief description of the application to appear in the SDA-Installer when the user positions the cursor over the application name.

**Source:** Use the fields in the **Source** tab to specify the location and names of installation files. You must specify either a silent installation command file or a custom installation command file; you can specify both. If you specify both, the system defaults to the silent installation command.



### Location of installation files

You must specify the path where the files that are used to install the application are located. The path that you specify in this required field is automatically displayed as the path for the **Silent Installation Command** field on the **Source** tab.

### Encrypt the installation (setup) files

This optional setting enables you to encrypt one or more applications with PKZIP software when building an SDA image.

Encryption prevents a user from manually navigating the SDA image directory and installing an application that must not be installed (typically for royalty or licensing reasons).

When an application is marked for encryption, the SDA-Administrator zips the installation files with a password and copies the .ZIP file to the SDA image. When SDA-Installer installs an encrypted application, the installation source for the application unzips to a temporary directory on the user's hard disk. The installation program runs from the temporary directory and is then deleted.

**Note:** Use application encryption only where license restrictions require it. Encryption lengthens the installation time by decompressing each of the encrypted applications before running the installation program.

### Preinstallation command

You have the option to set a program to run immediately before a program as part of the application installation process.

The preinstallation command enables you to set up your system for the environment, such as setting up a registry key or implementing a batch command.

### Silent installation command

You must complete this field if you do not specify a custom installation command. Type the name of the silent installation command, including any switches that are required to run the silent installation (for example, SETUP.EXE -S).

A silent installation occurs without input from the user. You must make sure that the program that you are using to install the applications (such as InstallShield, Wise Installer, or Windows Installer) supports silent installation.

### Custom installation command

You must complete this field if you do not specify a silent installation command file. Type the name of the custom installation command file (for example, SETUP.EXE).

A custom installation occurs with input from the user, such as installation options and destination directories.

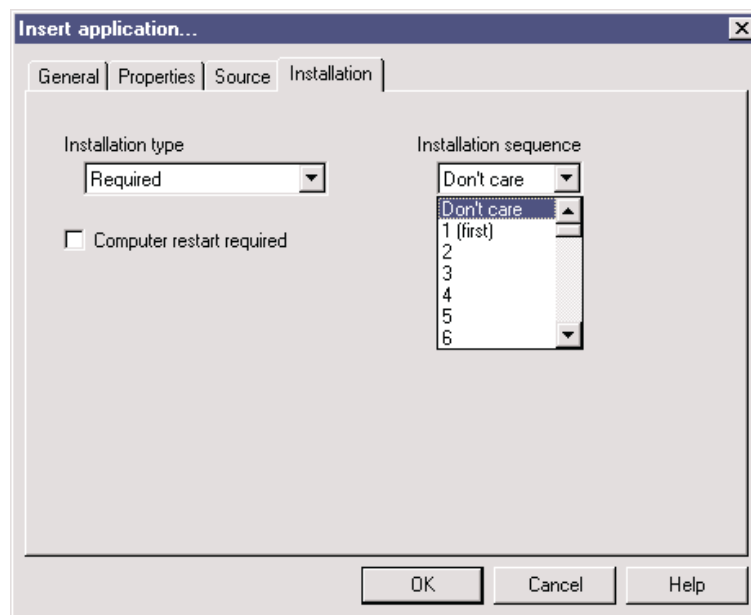
### Post-installation command

You have the option to set a program to run immediately after a program as part of the application installation process.

The post-installation command enables you to customize the installed application after the installation is complete. You can also custom configure the application that is installed by the SDA-Installer.

An example of a post-installation command would be setting the automatic update service for antivirus software.

**Installation:** Use the fields in the **Installation** tab to specify installation properties of the application.



### Installation type

You must click one of the following options from the menu:

- **Optional** - Installation of the application is optional.
- **Recommended** - Installation of the application is optional. In the SDA-Installer window, the application is selected by default the first time SDA-Installer runs. The user must deselect the application to avoid installing it.
- **Required** - The application is to be installed during the auto-installation portion of the SDA-Installer. The **Required** setting needs no user intervention.

The **Optional** and **Recommended** settings require that the user manually select the application.

### Installation sequence

Use this menu to assign the application an installation priority relative to other applications that are being installed. The installation sequence begins with **1**,

the highest priority and continues to **Don't care**. Applications that you assign the same priority are installed in random order relative to each other.

### **Computer restart required**

Select this check box if the computer must restart to complete the installation of the application. This selection applies only to applications that are installed during the optional-installation portion of the SDA-Installer. When installation of the optional applications is complete, SDA prompts the user to restart the computer.

SDA Version 1.2 installs both Common and business group applications together, following a single sequence (if a sequence is designated).

## **Image**

Use the following menu options to manipulate the SDA image that you bundle into the workspace.

### **Preview**

Click this option to ensure that you have the correct information in the workspace to create the SDA image that you want. The preview SDA image simulates the installation of applications through the SDA-Installer.

Previewing the image does not actually install any applications but instead simulates the installation by showing which applications will be installed for a selected business group.

### **Build**

Click this option to store the SDA image files in a build directory on your system.

Select the check box option **Click here to not copy any of the installation (setup) files** to extract only the SDA-Installer program to the SDA Image directory without copying any of the installation files.

**Note:** To ensure that you have the correct information in the workspace to create the SDA image that you want, create a preview SDA image before you build the SDA image.

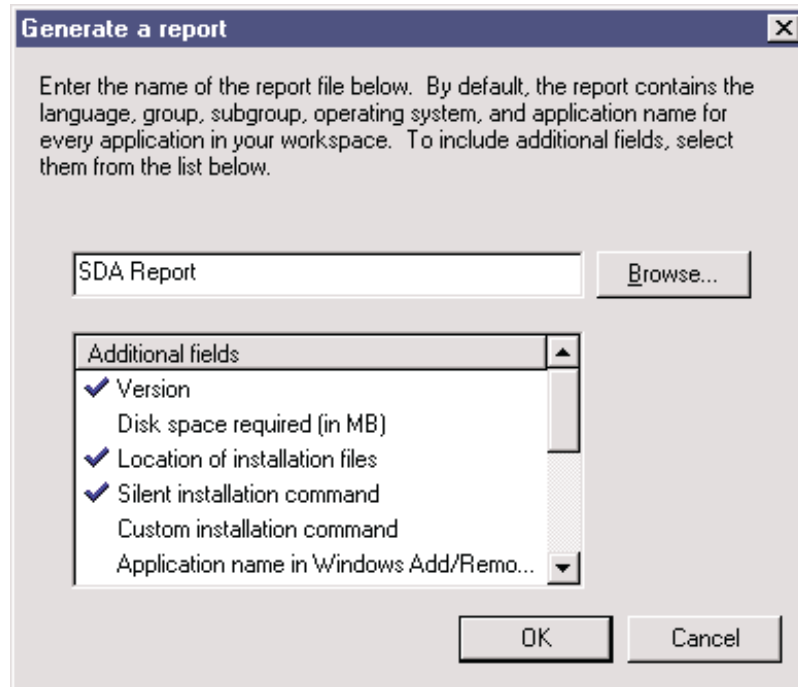
### **Report**

Click this option to generate a printable, formatted report containing a list of the application sets within a workspace.

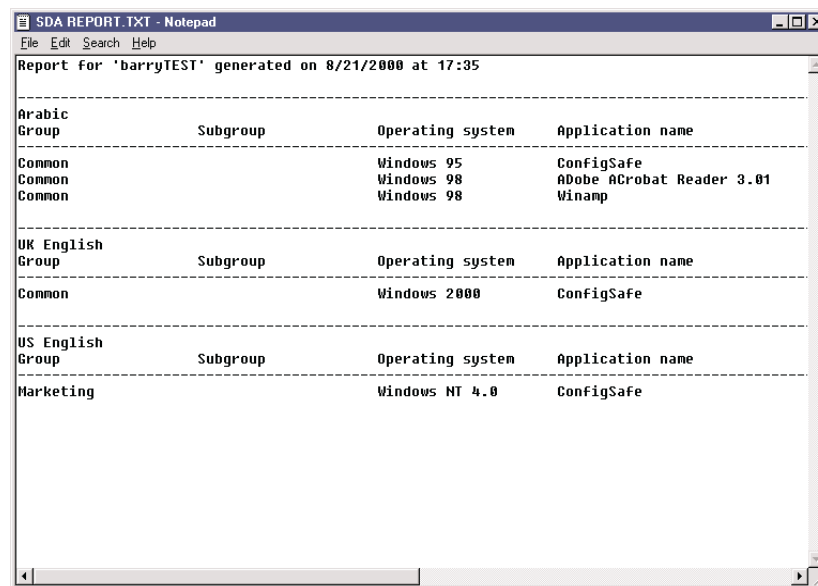
The report categorizes the applications by language. The report contains the following default columns:

- Application name
- Group name
- Subgroup name
- Operating system

You can customize the report by selecting which application properties to include in the report. For example, you can add the location of the installation files and the version for each application.



After you select the additional fields to include in the report, click **OK** to generate the report file in a standard ASCII format.



## Image properties

Click this option to define what happens with the SDA image after the required applications are installed on a user's system.

**Image:** Use the options in the **Image** tab to specify what happens to the SDA image after the auto-installation portion of the SDA-Installer installs required applications.

### SDA-Installer

Use the settings in this section to specify what you want to happen to the SDA-Installer.

SDA-Installer option	Result
Remove the SDA-Installer program from the user's hard disk.	Disables the other options in this window.
Leave the SDA-Installer program on the user's hard disk.	Enables the SDA image options in this window.

If you choose to leave the SDA-Installer program on the user's hard disk, you can select from the following options:

- Run the SDA-Installer program after the required applications are installed.
- Add a shortcut to the Windows Start Menu for the end user to start at another time.
- Add a shortcut to the desktop for the end user to start at another time.

**Note:** You can select one or more of these options.

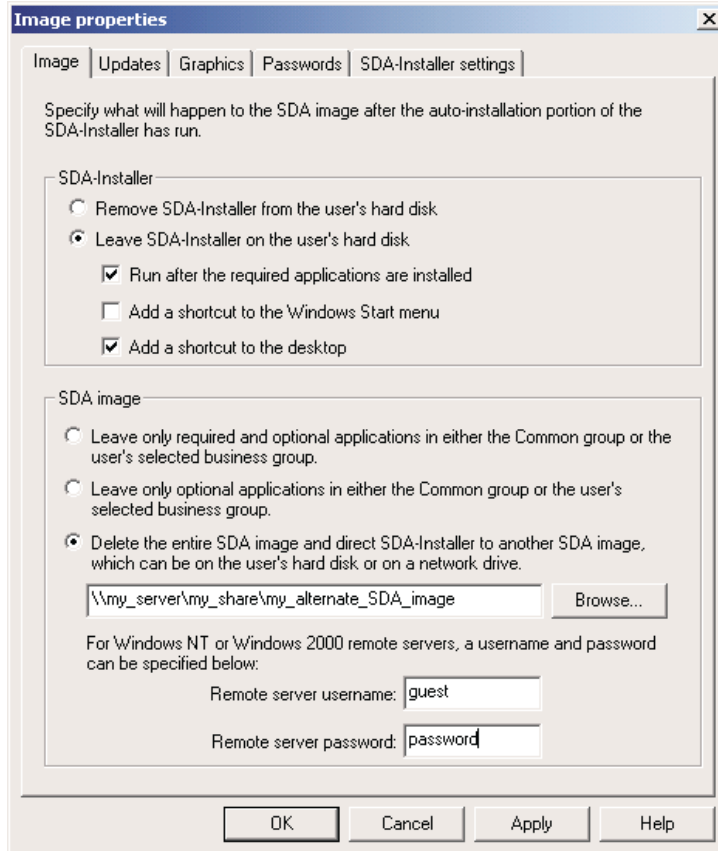
### SDA image

Use the settings in this section to specify what you want to happen to the SDA image after the auto-installation portion of the SDA-Installer installs the required applications. You can select only one setting.

SDA image option	Result
Leave only required and optional applications in either the Common group or the user's selected business group.	Enables users to either reinstall one of their required applications (in case the installation ever becomes damaged) or install an optional or recommended application.
Leave only optional applications included in either the Common group or the user's selected business group.	Deletes all the required applications already installed. The user can install only the remaining optional or recommended applications in either the Common group or the user's selected group.
Delete the entire SDA image and direct SDA-Installer to another SDA image, which can be on the user's hard disk or on a network drive.	Specifies an alternative SDA image that contains another application set. This application set should have optional applications that the user can choose from. Required applications in the alternative application set will not be automatically installed.

The following diagram illustrates the options that the Image window contains.

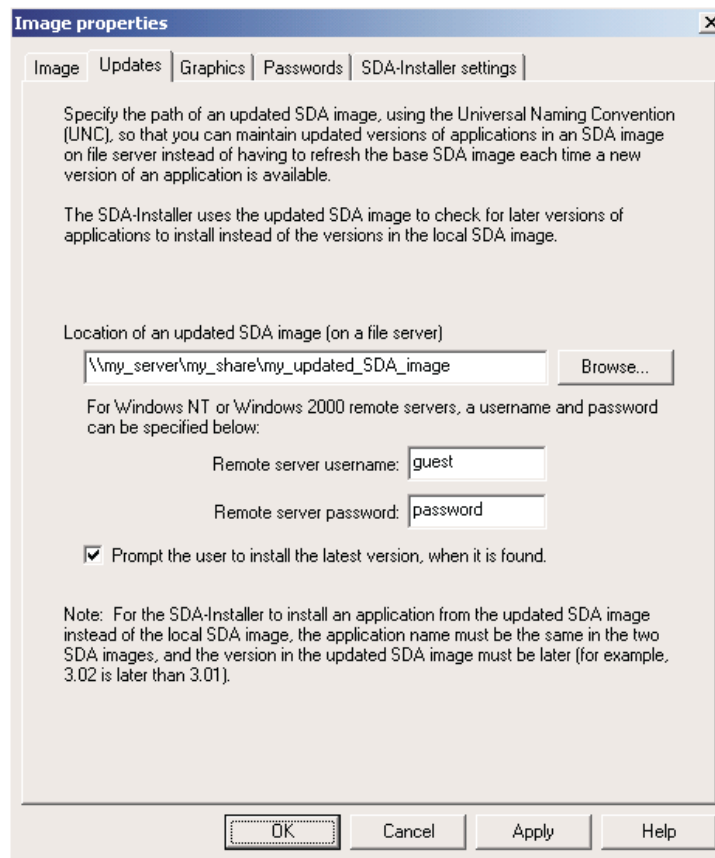
If you select the **Delete the entire SDA image and direct SDA-Installer to another SDA image** option, you have the option to enter a username and password at the **Remote server username** and **Remote server password** fields.



The username and password you enter here allow the user to install the applications without having to enter such information. If you leave these fields blank, the user will have to enter that information when installing the programs.

**Updates:** You can provide updated versions of applications for multiple SDA images on a file server. When the SDA-Installer installs the user's application set, it can look for a more recent version of each application in another SDA image (usually on a remote file server) before installing each application. If a more recent version of an application is located, SDA-installer installs that version instead of the version that is in the SDA image on the user's hard disk. The SDA image on the user's hard disk still determines the application set that is installed.

The following illustrates how an administrator can designate an updated SDA image:



If you enter a location in the Location of an updated SDA image (on a file server), you have the option to enter a username and password at the **Remote server username** and **Remote server password** fields.

The username and password you enter here allow the user to install the latest applications without having to enter such information. If you leave these fields blank, the user will have to enter that information when installing the programs.

For each installed application, the SDA-Installer compares the version number of the application on the local hard disk with the version number of the application on the updated SDA image to determine which version is installed. If the version on the updated SDA image is a more recent version, the user will be prompted to verify that the newer version should be installed. For example, version 2.01 is more recent than version 1.02.

The version number for each application is specified on the **Properties** tab for the application. Version numbers must be in the form of a numeric value, such as 1.0, 1.01, or 4.62.

In addition, the version check is performed on an application only if the SDA-Installer finds an application in the updated SDA image with the exact same name, group, language, and operating system.

**Graphics:** Use this field to change the graphic at the top of the left pane of the SDA-Installer window. In the **Header graphic** field, browse to the graphic file. This file must be a transparent .GIF image and not more than 140 x 140 pixels.

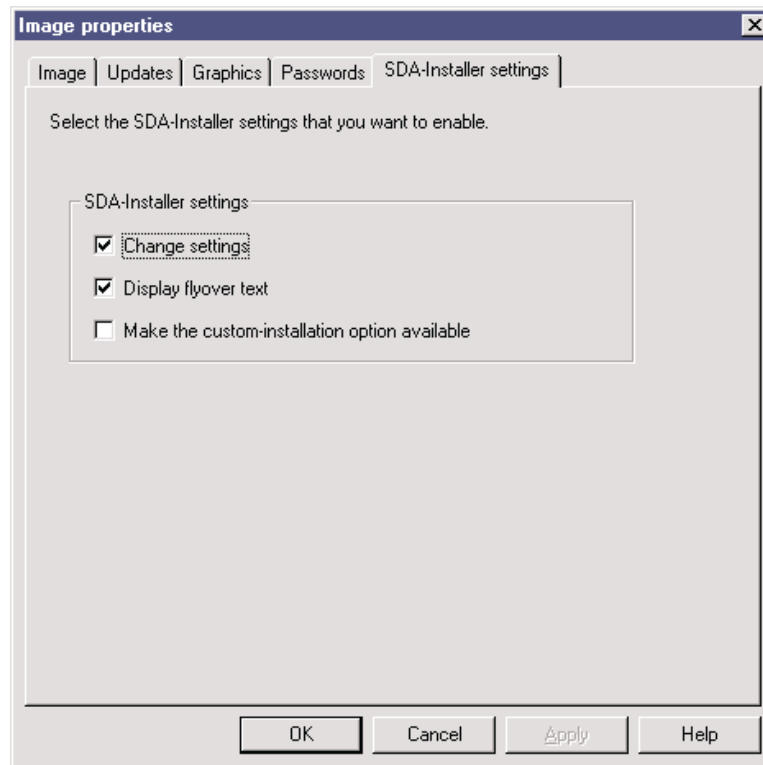


The field in this tab is applicable only if you leave the SDA image on the user's hard disk after the auto-installation. (To specify what you want to happen to the SDA image after the auto-installation, click **Image** → **Properties** and click the **Image** tab.)

**Passwords:** You can provide a password to be used for applications that you choose to encrypt (applications with the **Encrypt the installation files** check box selected on the **Source** tab in the Insert application window).

You can specify one password per SDA image. To set this password, click **Image** → **Properties** and click the **Password** tab.

**SDA-Installer settings:** Use these settings to enable or disable functions in the SDA-Installer program. You must specify the SDA image that is to be left on the user's hard disk for these settings to be relevant. (To specify what you want to happen to the SDA image, click **Image** → **Properties** and click the **Image** tab.)



### Change settings

Click this option to change settings (SDA image location, language, flyover text, and display of the **Custom installation** check box) in the optional-installation portion of the SDA-Installer.

### Display flyover text

Click this option to display a description of each application when the user positions the cursor over the application name.

If you click the **Change settings** option, the user can change the setting in the SDA-Installer window to control the way the description is displayed. (To create flyover text for an application, click the **Properties** tab in the Insert application window.)

### Make the custom-installation option available

Click this option to make the custom-installation option available to users.

If you click this option, a **Custom installation** check box is displayed with each application for which a custom installation command file has been spec-

ified. If you click the **Change settings** option, this option sets the default and the user can change the setting in the SDA-Installer window to show or hide the **Custom installation** check box.

## Translation

You can translate the group names and user-profile field names into other languages. The SDA-Administrator extracts these text items into files (.INI) that you can send to be translated.

### Send

You can extract the text from the SDA image file and save it to a directory on your hard disk.

### Receive

After you have translated the text, the SDA-Administrator integrates (receives) them back into the workspace.

## Window

These options are similar to the window options in many Microsoft Windows applications:

### Cascade

Arrange the windows so that they overlap.

### Tile

Arrange the windows as non-overlapping tiles either vertically or horizontally.

---

## Starting the SDA-Installer on the user's computer

You can use any of the following ways to run the SDA-Installer on a user's computer after you deploy the image. SDA-Installer runs after the computer is restarted.

## Create an entry in the RunOnce registry key

To run SDA-Installer automatically when the computer is started, add SDA-Installer to the RunOnce registry key. You can use .REG files like the following examples to add the appropriate registry key:

- For Windows 95, Windows 98, Windows NT 4.0, and Millennium Edition:

```
REGEDIT4
```

```
[HKEY_LOCAL_MACHINE\SOFTWARE\Microsoft\Windows\CurrentVersion\RunOnce]
```

```
"Run SDA-Installer"="d:\sdaimage\SWSELECT.EXE"
```

- For Windows 2000:

```
Windows Registry Editor Version 5.00
```

```
[HKEY_LOCAL_MACHINE\SOFTWARE\Microsoft\Windows\CurrentVersion\RunOnce]
```

```
"Run SDA-Installer"="d:\sdaimage\SWSELECT.EXE"
```

In these examples, *d:\sdaimage* is the drive and directory where the SDA image is located.

## Create a shortcut in the Startup folder

You can run the SDA-Installer automatically the first time the computer is started if you create a shortcut in the Startup folder. In the Startup folder on the user's computer,

create a shortcut to a batch file or program that starts the SDA-Installer and then deletes the shortcut from the folder.

## Allow the user to run SDA-Installer

You can allow the user to run the SDA-Installer on demand. Create a shortcut to the SDA-Installer on the Windows desktop or in the Start menu that launches SWSELECT.EXE.

## Running the SDA-Installer with Windows NT

The installation processes for many applications include updating Microsoft Windows resources, such as the registry and system directories; therefore, the user account on a user's computer must have administrator privileges to enable applications to be installed on the computer through the SDA-Installer. If you do not want the user account to have administrator privileges, you must use an alternative method of providing the necessary access privileges to the SDA-Installer.

The Windows NT Zero Administration Kit (ZAK) contains scripts and batch files that Windows NT can use to call other programs to apply registry changes and start programs such as the SDA-Installer.

See the Microsoft Web site ([www.microsoft.com](http://www.microsoft.com)) for more information about ZAK and how to integrate programs to run automatically at the end of Windows NT Setup.

---

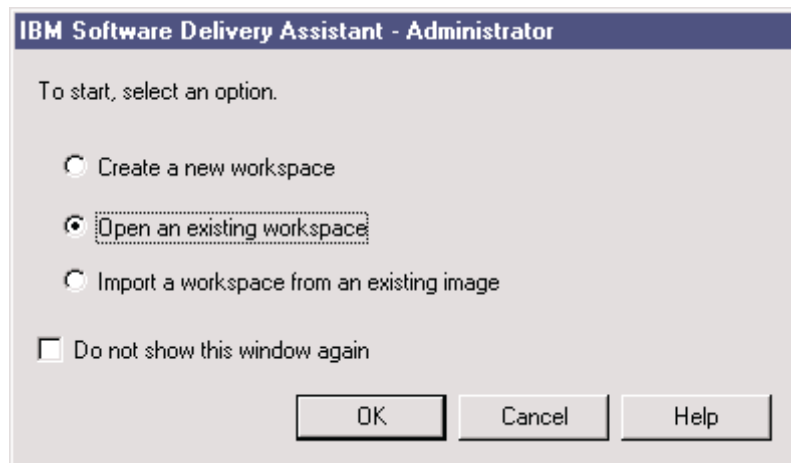
## Tasks

The following procedures demonstrate how to use the Software Delivery Assistant.

### Creating a new workspace

To create a new workspace, complete the following steps:

1. From the Software Delivery Assistant – Administrator window, click **Create a new workspace**, and click **OK**.



If the Software Delivery Assistant – Administrator window is hidden, click **File** → **New**. The workspace-creation wizard assists you in setting up the new SDA workspace.

2. Type the name of the new workspace, and click **Next**.
3. Select the languages that you want the SDA image to support, and click **Next**.

4. Click the **Add** button to compile the groups that you want the SDA image to support, and click **Next**.
5. Click the **Add** button to compile the user-profile fields that you want users to complete the first time they use the SDA-Installer, and click **Finish**.

You can now edit the workspace and add applications to each group.

### Specifying groups

To add a group, complete the following steps:

1. Click the language that you want to add to the group.
2. Click **Insert** → **Group**, or right-click the language and click **Insert group**.
3. Type the name of the group, and press **Enter**.  
Repeat this step for each group.
4. When you have listed all the groups that you want, click **Next**.

To delete a group from the list, click the group, and click **Remove**. To change the name of a group in the list, click the group and click **Edit**. Type the new name and press **Enter**.

### Specifying user-profile fields

To add a user-profile field, complete the following steps:

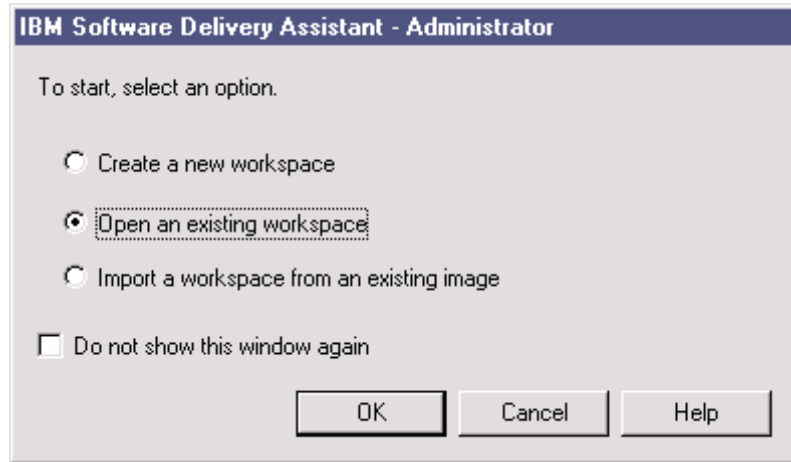
1. Click the group from the language into which you want to add a user-profile field.
2. Click **Insert** → **Profile field**, or right-click and click **Insert profile field**.  
The User profile window opens.
3. In the **Name** field, type the name of the user-profile field that you want to add.
4. In the **Size** field, type the maximum number of characters that the field can accommodate.  
The system truncates entries that exceed the specified size.
5. If you want to require the user to complete the field, select the **Required field** check box.  
If you do not want to limit the valid entries for the field, click **OK** and go to step 8.  
If you want to restrict user input to a list of valid entries, click **Add** to create a list of valid entries for the user.
6. Type an entry in the **Valid set** window, and press **Enter**.  
For each additional entry, click **Add**, type the entry, and press **Enter**. When you have listed all the entries that you want, click **OK**.
7. To delete an entry from the list, click the entry and click **Remove**. To change an entry, click the entry, and click **Edit**. Then type the new entry and press **Enter**.
8. For each additional user-profile field, repeat steps 1 through 6.

You can now edit the workspace and add applications to each group.

## Opening an existing workspace

To open an existing workspace, complete the following steps:

1. If you are starting SDA, click **Open an existing workspace** from the Software Delivery Assistant – Administrator window and click **OK**.



- If the Software Delivery Assistant - Administrator window is not open, click **File** → **Open**.
2. Browse to the workspace file (.SSW) that you want to open.
  3. Double-click the file, or click the file and click **Open**.

## Importing a workspace from an existing SDA image

To import a workspace from an existing SDA image, complete the following steps:

1. From the Software Delivery Assistant – Administrator window, click **Import a workspace from an existing image** and click **OK**.

If the Software Delivery Assistant – Administrator window is not open, click **File** → **Import**.

2. Type the descriptive name (not the file name) of the workspace that you want to create from the workspace that you are importing.
3. Type or browse to the drive and directory where the SDA image is located (where the SWSELECT.EXE file and the DATA subdirectory are located), and click **OK**.

## Adding languages to a workspace

To add languages to the active workspace, complete the following steps:

1. In the left pane of the SDA-Administrator window, click the workspace name.
2. Click **Insert**.
3. Click **Language**. The Insert language window opens.
4. Select each language that you want to add to the workspace, and click **OK**.

Each language contains the Common group and a set of user-profile fields.

## Adding groups to a language

To add a group to a language in the active workspace, complete the following steps:

1. In the left pane of the SDA-Administrator window, click the language to which you want to add a group.
2. Click **Insert** → **Group**. The Insert group window opens.
3. Type the name of the new group and click **OK**.

## Adding subgroups to a group

To add a subgroup to a group, complete the following steps:

1. In the left pane of the SDA-Administrator window, click the group to which you want to add a subgroup.
2. Click **Insert** → **Subgroup**. The Insert subgroup window opens.
3. Type the name of the new group and click **OK**.

## Adding applications to a group or subgroup

To add an application to a group or a subgroup in the active workspace, complete the following steps:

1. In the left pane of the SDA-Administrator window, within the applicable language, select the group to which you want to add an application.
2. Click **Insert** → **Application**. The Insert application window opens.
3. Specify the necessary information about the application in each of the tabs in the Insert application window.
4. When you are finished specifying the necessary information on each tab, click **OK**.

## Adding user-profile fields

To add a user-profile field, complete the following steps:

1. In the left pane of the SDA-Administrator window, under the language for which you want to add a user-profile field, click **Profile**. The current user-profile fields are displayed in the right pane of the SDA-Administrator window.
2. Click **Insert** → **Profile**. The User profile window opens.  
You can also right-click **Profile** and click **Insert profile field**.
3. In the **Name** field, type the name of the user-profile field that you want to add.
4. In the **Size** field, type the maximum number of characters that the field accommodates. SDA truncates entries that are too long.
5. If you do not want to limit the valid entries for the field, click **OK** to add the new user-profile field and go to step 9.  
If you want to limit the valid entries for the field, select the **Required field** check box if you want to require the user to complete the field.
6. To create a list of valid entries, click the **Add** button.
7. Type an entry in the **Valid set** window and press **Enter**.
8. Repeat steps 6 and 7 for each additional entry.  
To delete an entry from the list, click the entry and click **Remove**. To change an entry, click the entry and click **Edit**. Then type the new entry and press **Enter**.
9. When you have listed all the entries, click **OK**.

## Creating a preview SDA image

To create a preview SDA image from the active workspace, complete the following steps:

1. Click **Image** → **Preview**.
2. From the Language menu, click the language that you want to preview.
3. From the Operating system menu, click the operating system that you want to preview, and click **OK**.

The SDA-Administrator builds the preview SDA image and starts the SDA-Installer.

4. In the SDA-Installer, complete the user-profile fields, and click **OK**.

The SDA-Installer simulates installation of the applications in the Common group and the group that you selected in the user profile.

## Creating a new SDA image from an existing SDA image

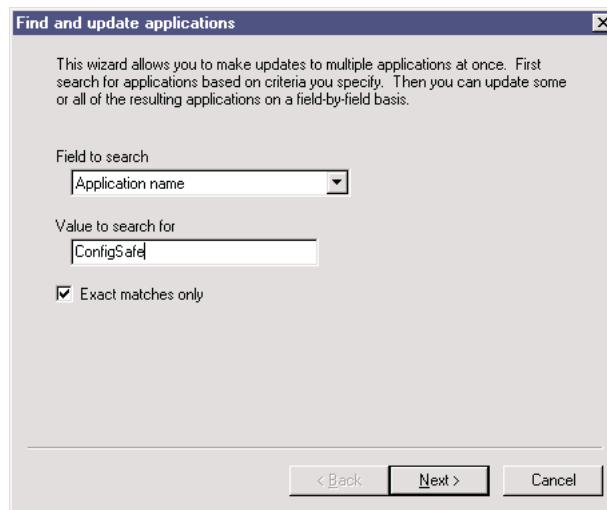
To create a new SDA image from an existing SDA image, complete the following steps:

1. Click **File** → **Import** to import a workspace from the existing SDA image.
2. Type the name for the new SDA image in the **New workspace name** field.
3. Type the drive and directory in the **Image location** field. You can also click the **Browse** button and manually navigate to the directory.
4. Click **OK**.

## Updating multiple applications

To update multiple applications, complete the following steps.

1. Click **Find** → **Update**. The Find and update application window opens.



2. Click the field type to search.  
The search field you select affects the value on which the engine searches. In some search fields, you can perform an exact search by selecting the **Exact match only** check box.
3. Enter the text you want to search for in the **Value to search for** field.
4. Click the **Next** button.  
The Find and update applications window displays the search results in the Results window.
5. Click the search result that you want to update.
6. Select the type of update you are making in the Field to be updated menu.
7. Enter or click the updated information in the **New Value** field. What you selected in the Field to be updated menu determines your entry.
8. Click the **Update Selection** button to update only the applications that are selected, or click the **Update All Results** button to update all applications in the results list.
9. Click **Finish** to complete the updates.

## Disabling the optional-installation portion of the SDA-Installer

To delete the SDA-Installer image from the user's hard disk, which disables the optional-installation portion of the SDA-Installer, complete the following steps:

1. Click **Image** → **Properties**.  
The Image properties window opens.
2. Click the **Image** tab.
3. Click **Remove SDA-Installer from the user's harddrive** and click **OK**.

## Translating group names and user-profile field names

Translation can be broken down into the following tasks:

- Extracting text for translation
- Integrating translated text

### Extracting text for translation

To extract the text from the active workspace, complete the following steps:

1. Click **Translation** → **Send**.  
The Send window opens.
2. Type the drive and directory where you want to store the files and click **OK**. You can also navigate to this location by clicking the **Browse** button.  
The information panel displays the results of the text extraction.

### Integrating translated text

To integrate the translated text into the active workspace, complete the following steps:

1. Click **Translation** → **Receive**.  
The Receive window opens.
2. Type the drive and directory where you want to store the files and click **OK**. You can also navigate to this location by clicking the **Browse** button.  
The information panel displays the results of the text extraction.



# Index

## A

- adding applications to a group or subgroup 24
- adding groups to a language 23
- adding languages to a workspace 23
- adding subgroups to a group 23
- adding user-profile fields 24
- Application
  - Insert menu 9
- application insertion properties, Insert application window 10
- Application name field
  - General tab 10
- Application name in Windows Add/Remove Programs field
  - Properties tab 11
- application sets 9

## B

- Build window
  - Image menu 14
- business group application installation 14

## C

- Change icon button
  - General tab 10
- Change settings
  - SDA-Installer settings 19
- Click here to not copy any of the installation (setup) files. Instead only the SDA-Installer program will be copied to the build directory check box 14
- Common Group 6
- Common group installation 14
- Computer restart required checkbox
  - Installation tab 14
- Copy
  - Edit menu 7
- creating a new SDA image from an existing SDA image 25
- creating a new workspace 21
- creating a preview SDA image 24
- Custom installation check box 19
- Custom installation command field
  - Source tab 13
- custom installation, defined 13
- Custom-installation option
  - SDA-Installer settings 19
- Cut
  - toolbar buttons 7

## D

- default columns, report 14
- Delete
  - Edit menu 7
- disabling the optional-installation portion of the SDA-Installer 26
- Disk space required (in MB) field
  - Properties tab 11
- Display flyover text
  - SDA-Installer settings 19
- Do not show this window again check box 5

## E

- Edit menu
  - Copy 7
  - Delete 7
  - Find and update 8
  - menu options 7
  - Paste 8
  - Selected object 7
- Encrypt the installation (setup) files checkbox
  - Source tab 12
- Encrypt the installation files 19
- encryption, defined 12
- existing workspaces 6
- extracting text for translation 26

## F

- File menu
  - Import 7
  - menu options 7
  - New 7
  - Open 7
- Find and update
  - Edit menu 8
- Flyover text field
  - Properties tab 11

## G

- General tab
  - Application name field 10
  - Change icon button 10
  - Insert Application window 10
  - Language and Group fields 10
  - Operating system field 10
- Generate a report window
  - Image menu 14
- Graphics tab 18
  - Image properties window 18
- Group
  - Insert menu 8

- Group names, translation 20
- Group specification 6
- group support, by image 6
- Group, defined 6

## H

- Header graphic field 18
- Help
  - toolbar buttons 7

## I

- Image menu
  - Build window 14
  - Generate a report window 14
  - Image properties window 15
  - Preview window 14
- Image menu options 14
- Image properties window
  - Graphics tab 18
  - Image menu 15
  - Image tab 15
  - Passwords tab 19
  - SDA-Installer settings tab 19
  - Updates tab 17
- Image tab
  - Image properties window 15
  - SDA image settings 16
  - SDA-Installer settings 15
- Import
  - File menu 7
- importing a workspace from an existing SDA image 23
- Information panel
  - toolbar buttons 7
  - View menu 8
- insert
  - menu options 8
- Insert Application window
  - General tab 10
  - Installation tab 13
  - Properties tab 10
  - Source tab 11
- Insert menu
  - Application 9
  - Group 8
  - Language 8
  - Profile field 9
  - Subgroup 9
- Installation sequence field
  - Installation tab 13
- Installation tab
  - Computer restart required checkbox 14
  - Insert Application window 13
  - Installation sequence field 13
  - Installation type field 13
- Installation type field
  - Installation tab 13
- installation types 13

- optional 13
- recommended 13
- required 13
- Installing 1
- integrating translated text 26

## L

- Language
  - Insert menu 8
- Language and Group fields
  - General tab 10
- language selection 6
- Location of installation files field
  - Source tab 12

## M

- menu options
  - Edit menu 7
  - File menu 7
  - insert 8
  - View menu 8

## N

- New
  - File menu 7
  - toolbar buttons 6

## O

- Open
  - File menu 7
  - toolbar buttons 7
- opening an existing workspace 22
- operating system
  - View menu 8
- Operating system field
  - General tab 10
- optional
  - installation types 13

## P

- Passwords tab
  - Image properties window 19
- Paste
  - Edit menu 8
  - toolbar buttons 7
- Post-installation command field
  - Source tab 13
- post-installation command, defined 13
- Preinstallation command field
  - Source tab 12
- preinstallation command, defined 12

- Preview window
  - Image menu 14
- Profile field
  - Insert menu 9
- Properties tab
  - Application name in Windows Add/Remove Programs field 11
  - Disk space required (in MB) field 11
  - Flyover text field 11
  - Insert Application window 10
  - Version field 11

## R

- Receive window
  - Translation menu 20
- recommended 13
- report columns, Generate a report window 14
- report customization 14
- required
  - installation types 13
- Running the SDA-Installer on Windows NT computers 21
- RunOnce registry key entry creation 20
- RunOnce registry key entry, Windows 2000 20
- RunOnce registry key entry, Windows 95, 98, NT 4.0, and Millennium 20

## S

- Save
  - toolbar buttons 7
- saving the workspace file 6
- SDA image after auto-installation portion 16
- SDA image preview 14
- SDA image settings
  - Image tab 16
- SDA-Administrator 3
- SDA-Installer 3
- SDA-Installer initiation, by user 21
- SDA-Installer program options, left on hard disk 16
- SDA-Installer settings
  - Change settings 19
  - Custom-installation option 19
  - Display flyover text 19
  - Image tab 15
- SDA-Installer settings tab
  - Image properties window 19
- SDA-Installer, starting 20
- Selected object
  - Edit menu 7
- Send window
  - Translation menu 20
- Shortcut creation for Startup folder 20
- Silent installation command field
  - Source tab 12
- silent installation, defined 12
- Software Delivery Assistant - Administrator window 5
- Source tab 19
  - Custom installation command field 13

- Encrypt the installation (setup) files checkbox 12
- Insert Application window 11
- Location of installation files field 12
- Post-installation command field 13
- Preinstallation command field 12
- Silent installation command field 12
- specifying groups 22
- specifying user-profile fields 22
- Status bar
  - View menu 8
- Subgroup
  - Insert menu 9
- System Requirements 1

## T

- tile
  - Window menu options 20
- Toolbar
  - View menu 8
- toolbar buttons
  - Cut 7
  - Help 7
  - Information panel 7
  - New 6
  - Open 7
  - Paste 7
  - Save 7
- Translation menu
  - Receive window 20
  - Send window 20

## U

- Update Connector Manager
  - Installing 1
  - System Requirements 1
  - Un-installing 1
- updated application versions 17
- Updates tab
  - Image properties window 17
- updating multiple application 25
- user-profile field names, translation 20
- user-profile field specification 6

## V

- Version field
  - Properties tab 11
- View menu
  - Information panel 8
  - menu options 8
  - operating system 8
  - Status bar 8
  - Toolbar 8

## W

Window menu options 20

tile 20

Windows NT Zero Administration Kit (ZAK) 21

Windows Start Menu 16

workspace 3

workspace importation from existing SDA image 6

workspace interface 5

workspace name 6





Part Number:  
File Number:



Printed in the United States of America  
on recycled paper containing 10%  
recovered post-consumer fiber.