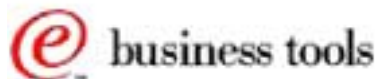


IBM NetVista Thin Client N2200w Windows-based Terminal



Terminal Properties
A Quick Glance

July 2000

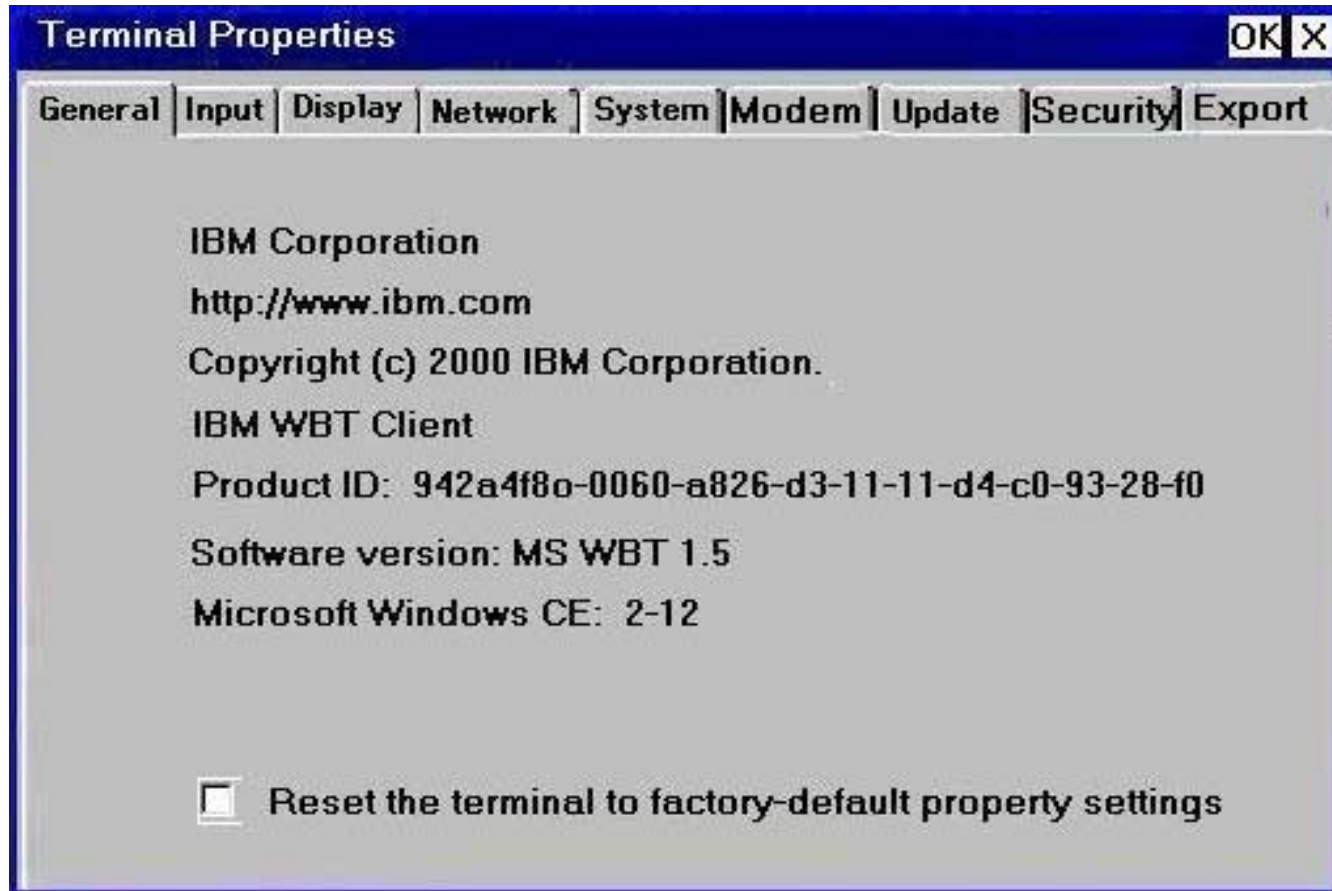


© IBM Corporation

IBM NetVista Thin Clients
Access for today, flexibility for tomorrow



Terminal Properties





Notes



Objective:

The objective of this presentation is to provide a quick glance at the different parameters that can be configured on the WBT. During a presentation, the best way to look at these is to use an actual live demo, but in case this is not possible, then this presentation provides a screen shot of the major panels.

The objective is not to cover each individual parameters but rather to provide a general feeling for what can be configured via the Terminal Properties panel and to point out some of the key parameters.

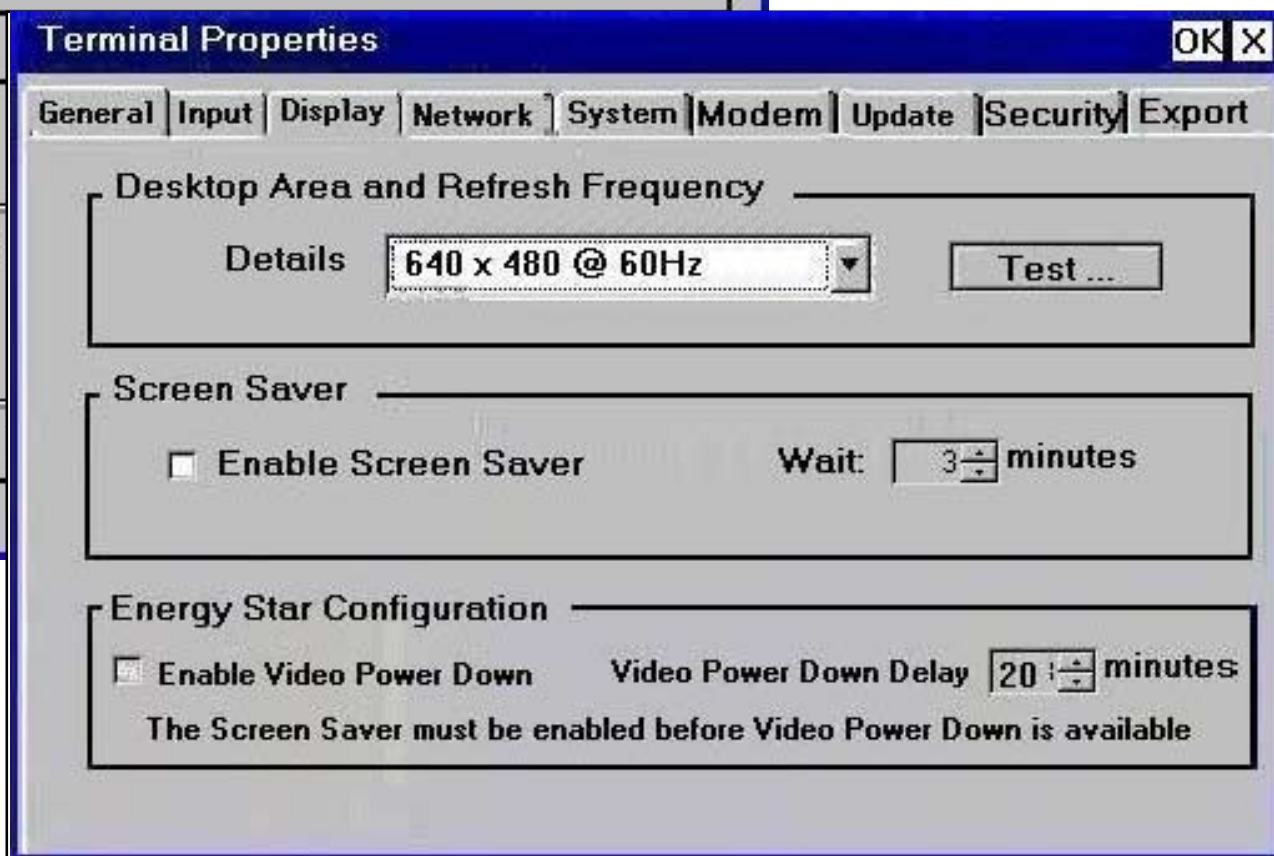
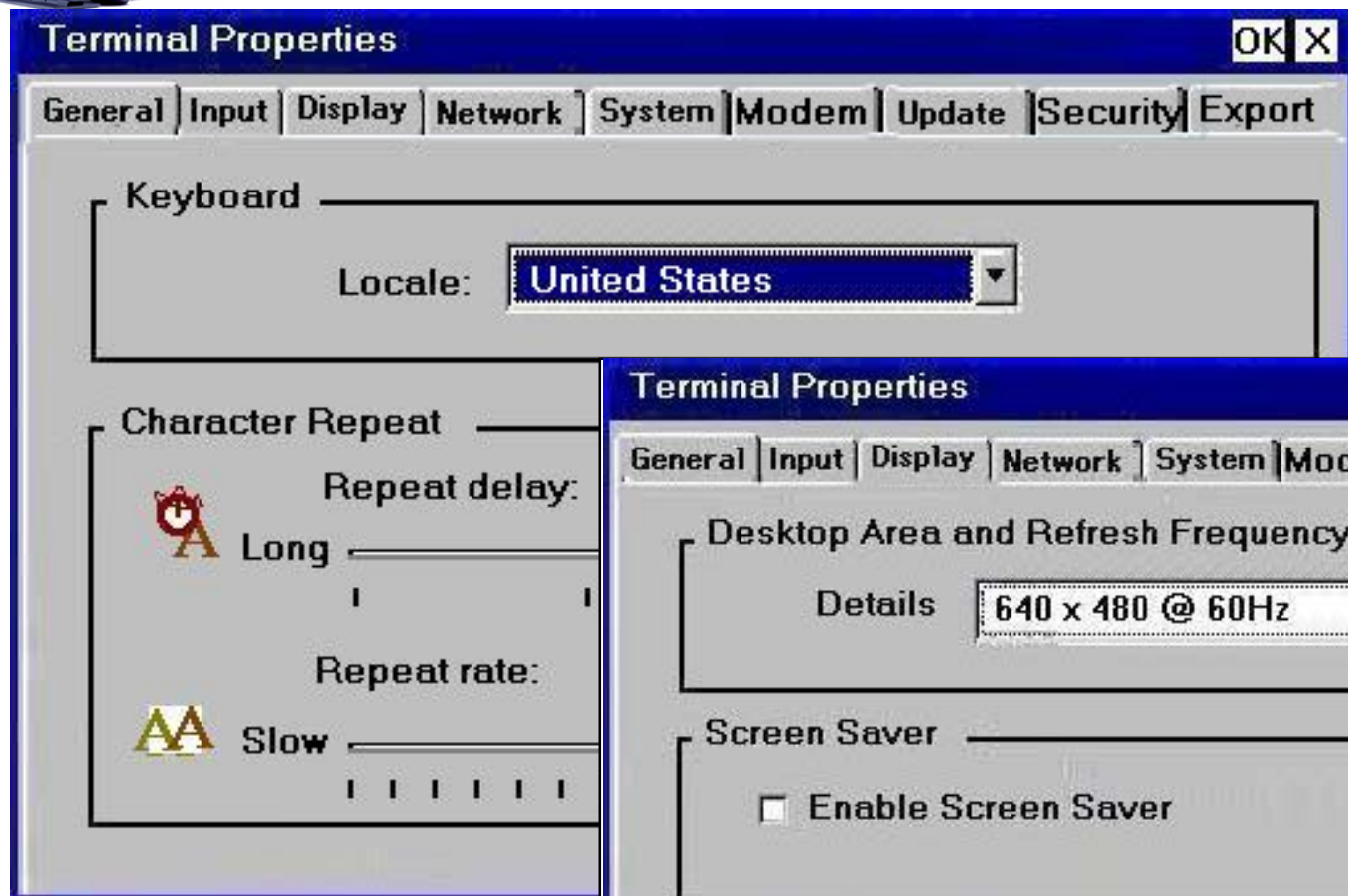
This panel is the main panel, accessed via the PF2 key from the Terminal Connection manager panel. As of Service Pack 1.0, if security has been enabled, a password is required to access these properties.

One piece of data that this panel provides is the MAC address of the unit, which is the last 16 digits of the Product ID.

Notice as well the [Reset to factory settings](#) check mark, which is used to reset the unit is the state that it was when it was initially received. After this is checked, a Reboot will cause the unit to start at the Setup Wizard and request initial configuration.



Input and Display Properties





Notes



These two properties panels are pretty self-explanatory since they are similar to what you find on any PC.

Input allows setting of the locale to determine the keyboard language used and you can set the key repeat delay and rate.

Display sets the resolution as well as enabling or disabling the screen saver and power management function.



Network Properties

NetVista

Terminal Properties [OK] [X]

General | Input | Display | **Network** | System | Modem | Update | Security | Export

Obtain an IP address from a DHCP server

Specify an IP address

IP Address:	0	.0	.0	.0
Subnet Mask:	0	.0	.0	.0
Gateway:	0	.0	.0	.0

Terminal Name:

Advanced Network Settings [X]

Enable DNS

Default Domain:

Primary Server IP Address:

Secondary Server IP Address:

Enable WINS

Primary Server IP Address:

Secondary Server IP Address:



Notes



The Network Properties are used to set the basic IP network data, similar to what was done on the Setup Wizard panel.

If network data is obtained from a DHCP server, then all that is needed is to use the first radio button at the top.

Notice the Terminal Name, which is used to identify this particular unit when connecting to a Terminal Server via Microsoft Remote Desktop Protocol (RDP). This name appears as the client name on the sessions tab in the Terminal Server Administration panel on the server. For a Citrix Independent Computing Architecture (ICA) connection, MetaFrame uses an automatically generated WINCExxxxx instead of this terminal name.

If DHCP is not used, then the IP data needs to be entered manually. The Advanced Network button brings up the panels where DNS and/or WINS information can be configured, if required.

Both can be used, in which case, if DNS cannot resolve the name, a request is sent to the WINS servers.



System Properties



Terminal Properties [OK] [X]

General | Input | Display | Network | System | Modem | Update | Security | Export

WBT Utility

Memory Statistics

Memory in Use %	5	Object Store KB	1048
Physical Memory		Virtual Memory	
Total KB	22777	Total KB	33554
Available KB	21676	Available KB	32374

[Update]

ICA Client Configuration [Configure]

Build version Information

Build Number: 0181

Global ICA Client Settings

Hotkeys | Preferences | Server Location | Firewall Settings

Status Dialog	Ctrl	6	CTRL-ESC	Ctrl	5
Close Session	Ctrl	2	ALT-ESC	Ctrl	7
Toggle Title Bar	Ctrl	3	ALT-TAB	Ctrl	8
CTRL-ALT-DEL	Ctrl	4	ALT-BACKTAB	Ctrl	9



Notes



There are three sections on this panel:

- The first display some system statistics, which can be updated using the Update button
- The second, in the bottom right hand corner, identifies the level of the code that is installed and is a number that would need to be supplied to service personnel when doing problem determination
- The third section, at bottom left, is to configure some of the ICA connection characteristics, such as the setting of some of the hot key sequences (such as CTL-2 which is close the session for example) and other preferences.



Modem Properties

NetVista

The screenshot shows the 'Terminal Properties' dialog box with the 'Modem' tab selected. The window title is 'Terminal Properties' and it has a 'UK' locale indicator. The tabs include General, Input, Display, Network, System, Modem, Update, Security, and Export. The 'Modem' tab contains the following elements:

- Connection Name:** A dropdown menu showing 'My Connection', with 'Add...' and 'Delete' buttons to its right.
- Modem Section:**
 - Serial Port:** A dropdown menu showing 'Hayes Compatible on COM1:'.
 - Country, Area, Telephone Number:** Three input fields. The 'Country' field contains '1'.
 - Force Long Distance / Force Local:** Two radio buttons. 'Force Local' is selected.
 - Dial / Hang Up:** Two buttons.
 - Status:** A text box showing 'Ready'.
- Connection Section:**
 - User Name:** An empty text box.
 - Password:** An empty text box.
 - Domain:** An empty text box.
 - Port Settings...:** A button at the bottom right.



Notes



This tab/function is new in Service Pack 1.0 and allow the set up of a dial-up connection.



Update Properties



Terminal Properties [OK] [X]

General | Input | Display | Network | System | Modem | Update | Security | Export

WARNING: Altering the settings on this page may adversely affect the operation of this terminal. Only system administrators should change the contents of this page.

WBT Update URL:
(<http://myserver/wbt.xml> or <ftp://myserver/wbt.xml>)

Check for WBT updates at every power on



Notes



The Update function is where the user can enter a URL, in the format indicated on the panel, that points to file on an update server that contains directives, or commands, in order to download and update the software components on the flash card.

The update can be caused to occur immediately when the user clicks on the Update Now button, or notice the checkbox labeled **Check for WBT updates at every power on** that allows this function to be automatically started at every power on.

See the separate presentation on Firmware Update for additional details on how these updates are performed.



Security Properties

NetVista





Notes

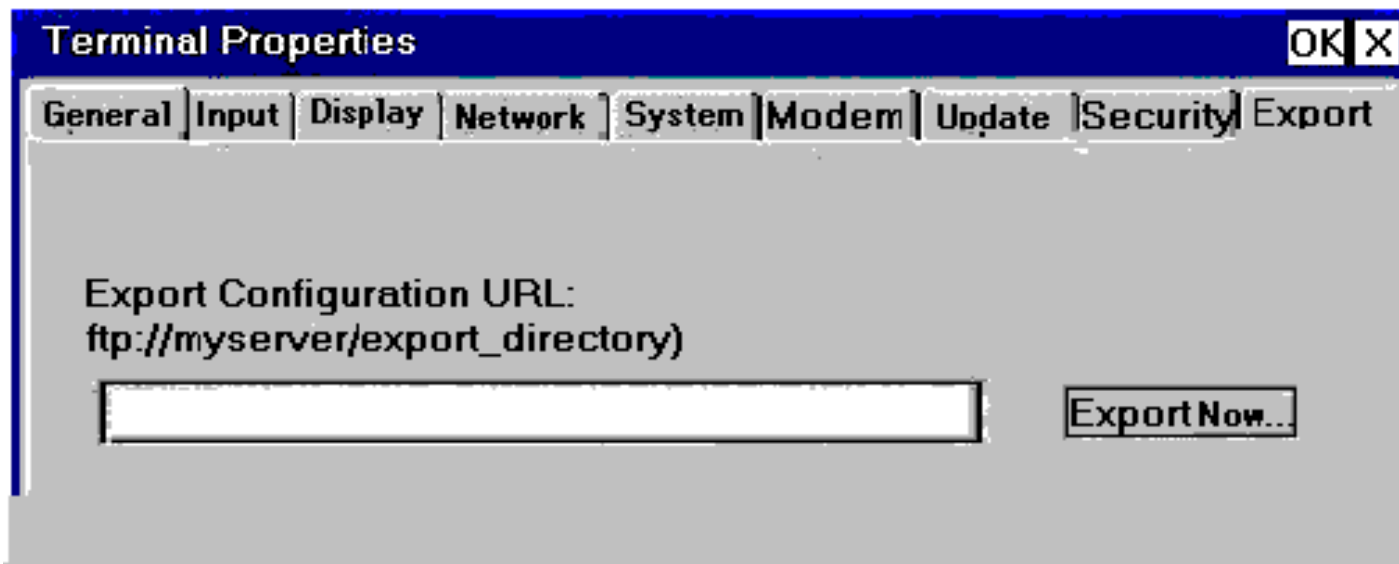


The Security Properties is also new with Service Pack 1.0 and it allows the enabling of a password in order to access the Terminal Properties and the Terminal Connection configuration.

This is used in cases where it is necessary to prevent a user from changing any of the configuration parameters on the unit.



Export Properties





Notes



This function, also provided as of Service Pack 1.0, allows the user to upload to an FTP server a copy of the configuration files currently in effect.

These files include the Windows CE Registry as well as any emulator configuration files such as session characteristics, and keyboard maps, character translation files, etc.

Once these files have been uploaded to a server, they can be downloaded back to this unit to restore it to an operational state after it has been reset to factory settings (as an example) or they can be downloaded to other units in order to actually clone (make a copy of) this unit. This technique can be used in a large roll out where every unit can be configured the same and therefore a cloning process can be used to configure all the units.

See the separate presentation on firmware update for a detailed description and example of the use of this function.



Additional Information



- **Product Publication for the IBM NetVista N2200w Windows-based Terminal at www.ibm.com/nc/pubs**



Notes



Most of the information on configuration that is available can be found in the product publication which is available from the www.ibm.com/nc/pubs web site.