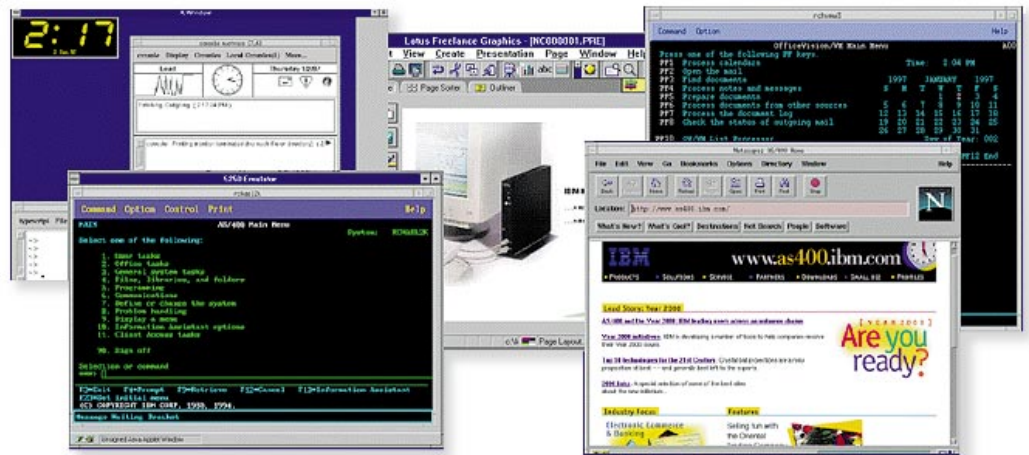




*Enjoy easy access to Windows applications  
and much more with the IBM Network Station.*





*In business computing, one operating system rarely fits all. That's because most businesses need access to host-based applications and corporate databases on mainframe or mid-range servers as well as client/server and office productivity applications running on Windows NT®. Not to mention Internet, intranet and Java™ applications to take advantage of e-business.*

How do you give users the Windows® applications they want alongside all your existing applications without spending a fortune on desktop hardware and creating management headaches for the IT department?

It's easy. With the versatile, easily managed IBM Network Station™ family of network computers and multi-user software for Windows NT, you can have access to Windows, host-based applications, browsers and Java — all at the same time and with unequalled simplicity.

#### **A Windows terminal and more**

The IBM Network Station can put 16- and 32-bit Windows applications and the graphical Windows user environment on every user's desktop, just like a Windows-based terminal (WBT). All it takes is the software that comes with the Network Station, plus multiuser NT software from Microsoft® and Citrix Systems, Inc.

This combination not only makes it possible to access Windows applications from client devices other than Windows-

based terminals, but also enhances manageability and network performance while leaving you free to access servers other than Windows NT.

With the IBM Network Station, all applications, data and administration reside on the server. For Windows applications, the client's job is simply to handle screen display and user input. This style of network computing eliminates the hassle and expense of installing, configuring and maintaining numerous Windows-based PCs. At the same time, it gives you the fast application deployment, easy application upgrades, low cost of ownership, reliability and security you expect from your investment in thin clients.

#### **Access to all your applications**

When you look beyond Windows, you see an important difference between the IBM Network Station and WBTs. While most WBTs provide access only to Windows applications, the IBM Network Station — with its included Network Station Manager software — provides access to your entire portfolio of enterprise

applications, on practically any server, over existing networks. You can simultaneously access:

- IBM Netfinity® and other PC servers running multiuser Windows NT
- IBM RS/6000® and UNIX® servers
- IBM AS/400®
- IBM S/390®
- The Internet and intranets

The IBM Network Station is designed to maximize access to your organization's computing resources while dramatically reducing your total cost of computing. It comes complete with 5250, 3270, X-Windows and VTXXX terminal emulation software, the NC Navigator browser, built-in Independent Computing Architecture (ICA®) support, a Java Virtual Machine and server-based management software.

With the Network Station, you no longer have to choose between the limited capabilities of a typical WBT or the expense and manageability issues of PCs. Instead, you'll get the best of both clients in one machine.

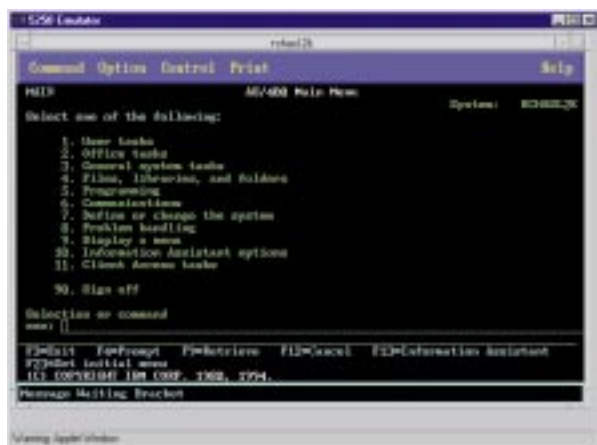
### Advantages for the NT environment

The IBM Network Station can access Windows applications from a variety of Windows NT Server environments, using the Network Station Manager software in conjunction with any of the following:

- Windows NT Server 4.0, Terminal Server Edition and Citrix® MetaFrame™ (ICA)
- Windows NT Server 3.51 and Citrix WinFrame™ (ICA)
- Windows NT Server 4.0, Terminal Server Edition, Citrix MetaFrame and NCD WinCenter for MetaFrame (X.11)

No matter which way you go, the Network Station offers you significant advantages over the typical Windows-based terminal:

- Reduced network and server workload
- Access to a full range of enterprise applications
- Network Station Manager, NC Navigator browser, and terminal emulation software included at no charge (Lotus® eSuite WorkPlace™ included with Series 1000)
- ICA or X.11 protocol access to Windows applications
- Compatible with Windows NT Server 4.0, Terminal Server Edition and Windows NT Server 3.51
- Booting from any Network Station Manager-supported server on the network, including Windows NT, OS/390™, OS/400®, AIX® and SCO® UnixWare® or OpenServer™



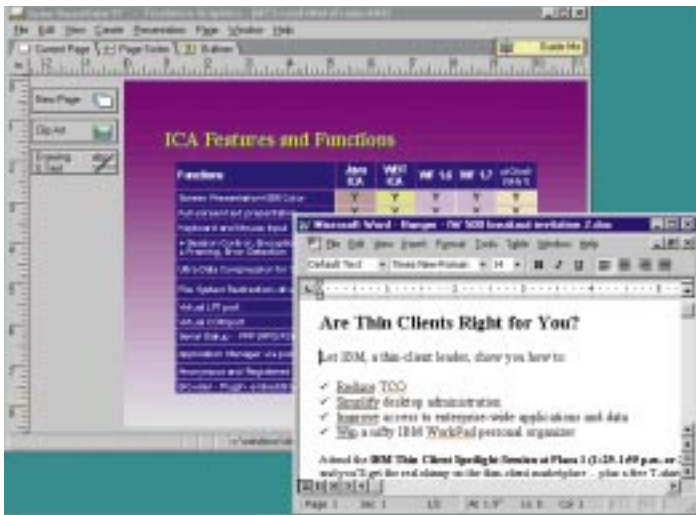
Built-in 5250 and 3270 terminal support puts existing applications on the desktop alongside Windows applications.



Access the Internet, intranets and extranets at the click of a button.

*“The Network Station enables us to lower the cost of computer ownership and maintenance, and still provide users with the applications they need.”*

– Max Currie, chief manager of information technology, General Accident Fire and Life



Give users the Windows applications they love, with less hassle than PCs.

*“The Network Station performance is as good as any Pentium I have. What’s more, we have access to AS/400 and PC applications and, with the WinCenter software on our server, we can run DOS, Windows 3.1 and Windows 95 programs with better menus and multiuser support.”*

*– Brian Littleton, president and CEO, California Hydronics*

- User access to personal desktop configuration and files from any Network Station on the network
- A proven technology being used by thousands of customers worldwide

### Today’s most versatile thin client

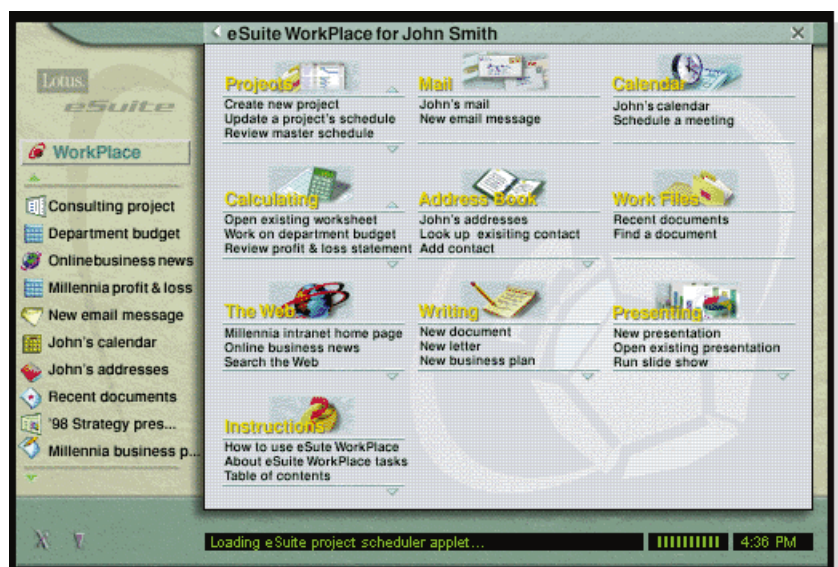
The IBM Network Station is the next generation of desktop computing and it’s available today! It’s designed to handle Windows applications, all of your current business applications, and the network computing and e-business tasks you’ll be doing tomorrow ... everything from enterprise resource planning and business intelligence to customer relationship management and Web-based applications.

Already today’s most successful network computer, the IBM Network Station has everything you need to move forward confidently into the next millennium:

- Ability to run multiple applications on multiple servers simultaneously, including S/390, AS/400, RS/6000, UNIX (via X-Windows), and Windows NT
- Built-in Java support
- High-speed Ethernet and Token-Ring LAN connections; twinaxial connection to AS/400 (Series 300 only)

- Year-2000 ready
- Audio and high resolution graphics support
- National language support for keyboards and screen displays in major languages
- Centralized management and administration with IBM Network Station Manager
- Extra-low power requirements
- Minimal desktop footprint

To discover even more good reasons why the IBM Network Station is the perfect partner for Windows and Windows NT, call 1 800 IBM-7080 within North America. Outside North America, call 416 383-5152. You can also find the latest Network Station information via the World Wide Web at [www.ibm.com/nc](http://www.ibm.com/nc).

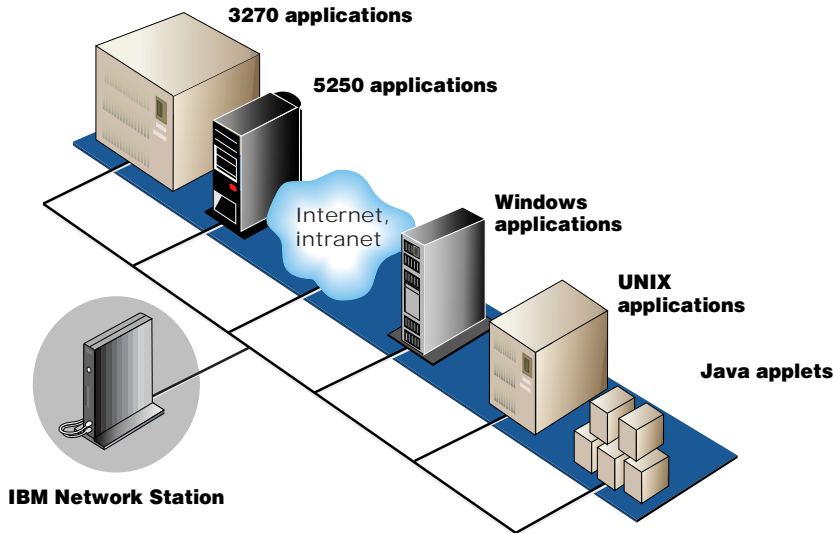


*The Network Station is ready to serve up Java whenever you are, with its built-in Java Virtual Machine.*

*“The Network Station’s versatility was an important selling point for us.”*

*– Ron Peace, vice-president and general manager, Bombardier Capital Mortgage*

**Comparing the IBM Network Station with Windows-based terminals.**

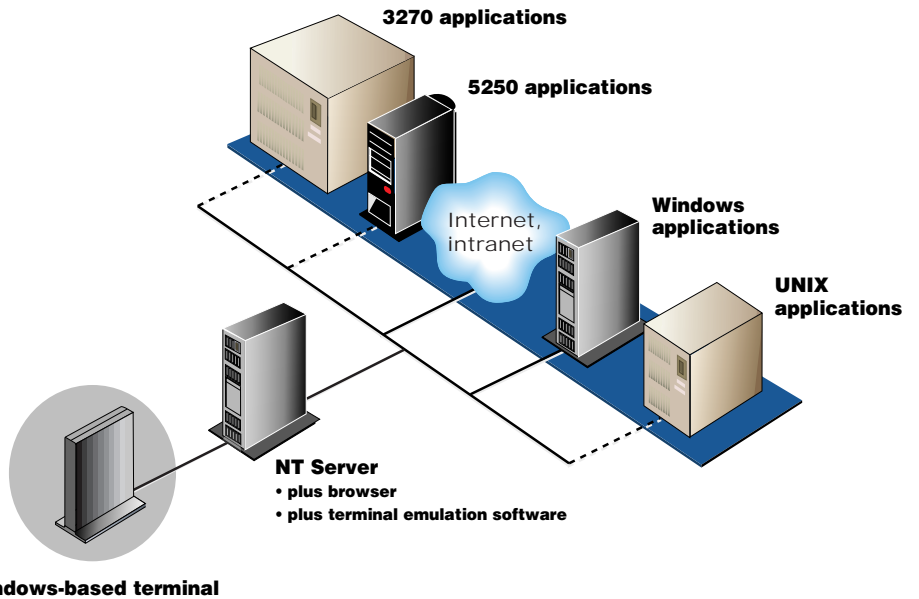


**IBM Network Station**

- Access multiple servers independently
- Mixed local/server application processing
- Native Java execution
- Open standards based
- Includes 3270, 5250, X-Windows and VTXXX emulators at no extra cost

**Windows-based terminals**

- Access to all servers through NT server
- No local processing; server runs everything
- No support for Java
- Proprietary standard based
- Terminal emulation, if available, may cost extra



**The added benefits of MetaFrame**

There’s a lot to be gained by using Citrix Systems’ MetaFrame in conjunction with the IBM Network Station and Windows NT, Terminal Server Edition.

For one thing, MetaFrame is based on Citrix’s Independent Computing Architecture, an open, industry-standard protocol

designed for heterogeneous computing environments. It provides efficient access to Windows applications from all kinds of devices — including PCs, network computers and hand-held PDAs — over all kinds of networks, from LANs to dial-up and ISDN connections.

MetaFrame also supports business growth by allowing you to group multiple

servers into a single server “farm,” allocating requests as needed among all servers for improved performance. This is known as load balancing.

In addition, MetaFrame simplifies user assistance and problem resolution by allowing an administrator to monitor any remote desktop from a single location, with a capability called session shadowing.



© International Business Machines Corporation 1998

IBM Corporation  
Network Computer Division  
Route 100  
Somers, NY 10589

[www.ibm.com/nc](http://www.ibm.com/nc)  
8-98

All Rights Reserved

References in this publication to IBM products or services do not imply that IBM intends to make these available in all countries in which IBM operates.

IBM hardware products are manufactured from new parts, or new and used parts. Regardless, our warranty terms apply. This equipment is subject to U.S. Federal Communications Commission (FCC) rules. It will comply with the appropriate FCC rules before final delivery to the buyer.

IBM, AIX, AS/400, Netfinity, Network Station, OS/390, OS/400, RS/6000, S/390, and the e-business logo are trademarks or registered trademarks of International Business Machines Corporation in the United States and/or other countries.

Lotus, eSuite and WorkPlace are trademarks or registered trademarks of Lotus Development Corporation.



Java and all Java-based trademarks and logos are trademarks or registered trademarks of Sun Microsystems, Inc. in the U.S. and other countries.

UNIX is a registered trademark in the United States and other countries licensed exclusively through X/Open Limited.

Citrix and ICA are registered trademarks and WinFrame and MetaFrame are trademarks of Citrix Systems, Inc.

SCO, UnixWare and OpenServer are trademarks or registered trademarks of the Santa Cruz Operation, Inc.

Microsoft, Windows and Windows NT are registered trademarks of Microsoft Corporation in the United States and other countries.

All other company, product and service names may be trademarks or service marks of others.



As an Energy Star Partner, IBM has determined this product meets the Energy Star Program guidelines for energy efficiency.



Printed in the United States of America on recycled paper containing 10% recovered post-consumer fiber.



G563-0055-00