



IBM 128 MB USB 2.0 High Speed Memory Key

使用手冊



IBM 128 MB USB 2.0 High Speed Memory Key

使用手冊

第一版 (2004 年 4 月)

© Copyright International Business Machines Corporation 2004. All rights reserved.

目錄

前言	v	第 4 章 KeySafe 的多國語言介面操作	4-1
註冊您的選用設備.	v	系統需求	4-1
第 1 章 簡介	1-1	開始使用	4-1
第 2 章 安裝需求	2-1	建立保密區域	4-1
在 Windows 2000 或 Windows XP 上安裝 Memory Key	2-1	使用您的保密區域	4-3
第 3 章 MyKey	3-1	登出您的保密區域	4-4
系統設定	3-1	自訂您的設定	4-4
安裝	3-1	桌面	4-4
MyKey 使用者自訂.	3-3	變更您的密碼	4-5
Preferences	3-3	變更您的保密區域	4-5
選取您要使用的語言	3-4	FAQs	4-6
Hide/Show.	3-4	第 5 章 非管理人員模式內的 KeySafe 與 MyKey	5-1
Help	3-4	系統需求	5-1
About	3-4	安裝說明	5-1
Exit	3-4	解除服務的安裝	5-1
MyKey 跳出式訊息.	3-5	第 6 章 使用 IBM Memory Key Boot Utility	6-1
Memory Key 主控台	3-5	系統設定需求	6-1
LCD	3-5	建立 IBM Boot Memory Key	6-1
按鈕	3-6	以 IBM Memory Key 啟動電腦	6-2
將您的 Memory Key 個人化	3-7	疑難排解	6-2
MyKey 個人化圖示.	3-7	附錄 A. Service and Support	A-1
MyKey 個人化音效.	3-7	Online technical support	A-1
MyKey 個人化標籤.	3-8	Telephone technical support	A-1
Memory Key 版本資訊	3-8	附錄 B. IBM Statement of Limited Warranty - Z125-4753-07 - 11/2002	B-1
進階功能	3-8	Part 2 - Country-unique Terms	B-4
登入/登出保密區域	3-8	Part 3 - Warranty Information	B-16
啓用/停用寫入保護	3-8	附錄 C. Notices	C-1
同步化選項	3-9	Trademarks	C-2
建立個人資料夾	3-10	Federal Communications Commission (FCC) statement	C-2
其他功能.	3-11		
傳送至 Memory Key 隨身碟	3-12		
自動執行.	3-12		
疑難排解.	3-12		
常見問題.	3-13		
如何聯絡我們	3-13		

前言

本手冊說明了 IBM® 128 MB USB 2.0 High Speed Memory Key 的安裝與使用。

您購買的產品包裝內應有：

- IBM 128 MB USB 2.0 High Speed Memory Key
- *IBM 128 MB USB 2.0 High Speed Memory Key* 光碟
- 快速啓動手冊

如果上列任一項目遺失或損壞，請洽詢當地的經銷商。請保留採購證明；使用保證服務時會需要。

這份「使用手冊」可在 *IBM 128 MB USB 2.0 High Speed Memory Key* 光碟中取得，並有下列語言版本：

- 巴西葡萄牙文
- 英文
- 法國
- 德文
- 義大利文
- 日文
- 簡體中文
- 西班牙文
- 繁體中文

註冊您的選用設備

感謝您購買 IBM 產品。請用一點時間為產品註冊，並提供一些相關資訊，這可以幫助 IBM 在未來提供您更好的服務。您的意見對我們的產品開發和服務十分寶貴，也促進您和我們更良好的溝通。您可以在下列 IBM 網站註冊您的選用設備：

<http://www.ibm.com/pc/register/>

除非您在網站上的問卷指出，您不想收到進一步的資訊，否則 IBM 會提供您所註冊的產品的資訊及更新。

第 1 章 簡介

IBM 128 USB 2.0 High Speed Memory Key 是小型攜帶式 USB 儲存裝置，可讓您不需使用磁片，就可在任何筆記型電腦和多用途 USB 埠的桌上型系統之間共享資料。IBM 128 MB USB 2.0 High Speed Memory Key 提供了遠超過 1.44 MB 磁片的空間，可供您儲存文字、簡報、試算表或多媒體檔案。

本手冊解說於 Microsoft® Windows® 2000 Professional 和 Windows XP 環境下 IBM 128 MB USB 2.0 High Speed Memory Key 的安裝和使用。

第 2 章 安裝需求

在安裝 IBM 128 MB USB 2.0 Memory Key 之前，請確認您的電腦有：

- 下列作業系統之一：
 - Windows 2000
 - Windows XP
- 可用的 USB 接頭

如果您要使用 Memory Key 做為開機裝置，則需要下列選用性項目。請參閱第 6-1 頁的第 6 章, 『使用 IBM Memory Key Boot Utility』

- 支援可開機的 USB 儲存裝置的 BIOS。如果您無法確認 BIOS 是否支援可開機的 USB 裝置的話，請聯絡您的電腦製造廠商。如是必要的更新，大多會有提供。
- 如有更新的必要，您的電腦或是 BIOS 更新都會附有 BIOS 說明文件。

在 Windows 2000 或 Windows XP 上安裝 Memory Key

Windows Me、Windows 2000 及 Windows XP 已經內建對 USB 2.0 Memory Key 的支援，因此不需要安裝驅動程式。您只要將 Memory Key 接到 USB 接頭。Memory Key 現在已經可以使用，顯示為抽取式磁碟機，並有系統所指定字母代號（例如，E:）標示。

第 3 章 MyKey

MyKey 是一個工具程式，您可藉由本程式的 Memory Key 主控台存取和自訂 Memory Key 的各項設定。訊息和提示會引導使用者從簡短的 MyKey 安裝、使用和自訂程序，讓使用者的 Memory Key 更個人化、有趣和容易使用。本章還有一些常見的重要問題 (FAQ)。

系統設定

您的電腦必須符合下列需求，才可以安裝和使用 MyKey：

- Pentium® II 266MHz
- 1.7 MB 可用磁碟空間 (C 磁碟)
- 作業系統：Windows 2000 或 Windows XP

MyKey 應用程式可在管理人員以及非管理人員模式內運作。如需更多資訊，請參閱第 5-1 頁的第 5 章，『非管理人員模式內的 KeySafe 與 MyKey』。

爲了有最佳的效能，Memory Key 可和支援 24 位元色彩深度的圖形加速器搭配使用。

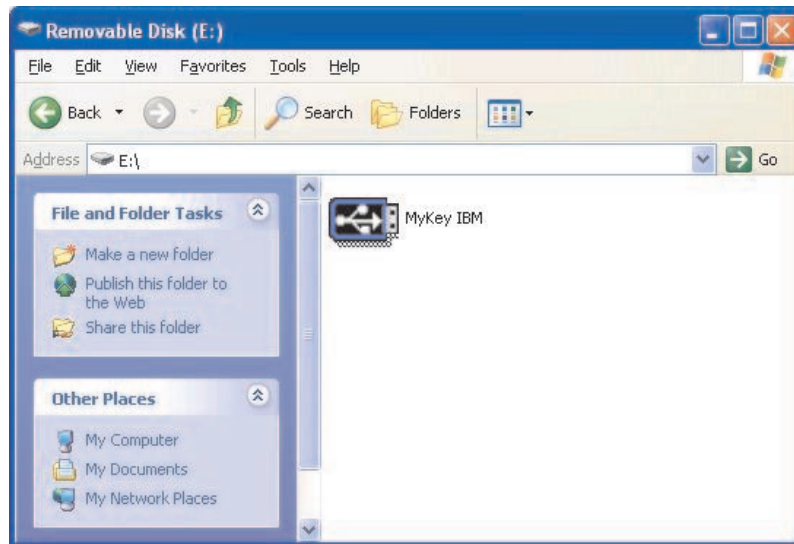
安裝

IBM 128 MB 2.0 High Speed Memory Keys 支援 MyKey。如果您的 Memory Key 支援 MyKey，請確定您有的 MyKey 是最新版本，可以從 www.pc.ibm.com/support 網站內的 128MB USB 2.0 Memory Key 項目內搜尋下載。

若要安裝 MyKey，請執行下列步驟：

1. 插入隨附於 Key 的 *IBM 128 MB USB 2.0 Memory Key* 光碟，並且開啓 Software 資料夾。

2. 連按兩下 **MyKey** 圖示。



3. 在安裝畫面上，如果想要桌面上有 **MyKey** 的捷徑，請勾選這個方塊。如此會在「開始」功能表中自動建立 **MyKey** 和解除安裝 **MyKey** 的捷徑。按一下 **Finish** 以開始使用 **MyKey**，或按一下 **Cancel** 以中止安裝。

註：依預設，會隨著 Windows 自動載入 **MyKey**。可從 **Settings** 視窗停用這個選項。



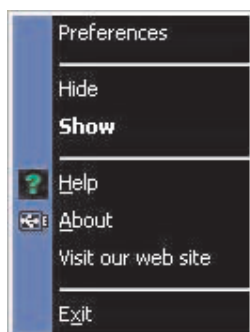
稍後待 **MyKey** 圖示加入到畫面底端的系統工作列（在時鐘旁邊。使用這個圖示，可最簡便、最快速地存取所有的 **MyKey** 功能。



若要解除安裝 **MyKey** 應用程式，請前往**開始** → **程式集** → **MyKey IBM** → **Uninstall MyKey IBM**。

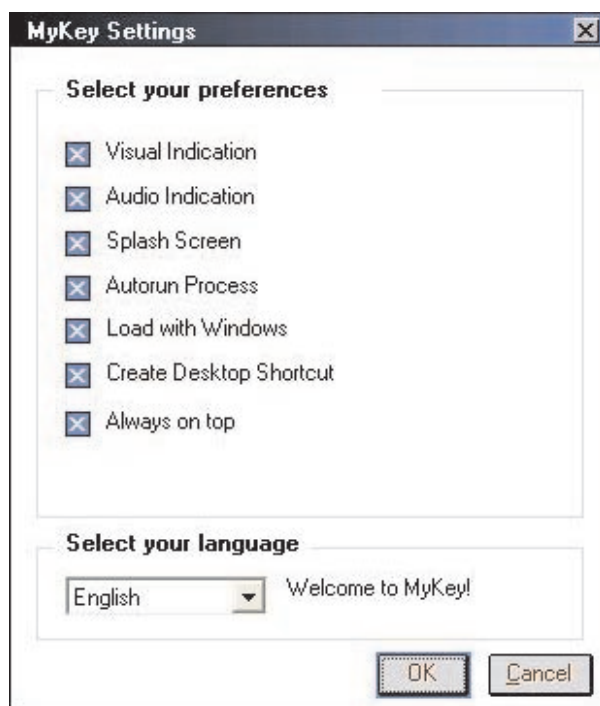
MyKey 使用者自訂

在 MyKey 資訊框圖示上按一下滑鼠右鍵，可開啓主要功能表執行 MyKey 的各項功能。以下說明本功能表中的每個選項。



Preferences

按一下 **Preferences** 可依據個人使用習慣設定 MyKey。按一下列各選項即可將之啓用或停用。



Visual indication

選取此項目，每次將 Memory Key 插入電腦的 USB 連接埠時，就會顯示 Memory Key 主控台。

Audio indication

選取此項目，將 Memory Key 插入電腦 USB 接頭時，會發出提示音。

Splash screen

載入 MyKey 時，會顯示本畫面。

Autorun process

選取此選項，會依據 MyKey 內自動啟動的相關設定，自動啟動各種應用程式，類似 CD-ROM 的自動執行。如需進階的自動執行功能，請參閱第 3-11 頁的『其他功能』

Load with Windows

依預設，Windows 啟用 Memory Key 進階功能時，會自動載入 MyKey。如果停用這個選項，要從電腦的「開始」功能表啟動 MyKey。

Create desktop shortcut

選取這個選項可在桌面上建立或移除 MyKey 捷徑。

Always on top

按照預設值，Memory Key 主控台會顯示在所有視窗的最上層，讓使用者存取較快速和方便。如果停用此選項，Memory Key 主控台會和其他視窗顯示在同一層。

選取您要使用的語言

若要選取您要使用的語言，請執行下列步驟：

1. 選取您要使用的語言。受支援的語言為英文、法文、西班牙文、義大利文、德文、葡萄牙文、中文（繁中或簡中）或日文。組合方塊中只會顯示受支援的語言。是否會正確顯示所選取的語言，取決於您使用的 Windows 版本，以及地區設定（**控制台** → **區域設定值**）。如果 Windows 不支援您選取的語言，則顯示的會是 "?" 而非語言名稱。
2. 確定語言選項組合方塊旁有顯示歡迎訊息。若有顯示，請按一下 **OK**，執行語言變更。所有畫面的影像和文字會變成所選取的語言。

Hide/Show

按一下 **Hide** 或 **Show** 隱藏或顯示 Memory Key 主控台。

Help

這個選項可啟動連結至 IBM 相關網站，可在裡面搜尋關於 Memory Key 及其應用程式的資訊。

About

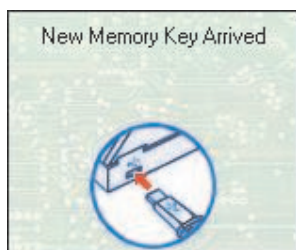
這個選項提供現行版本的相關資訊。

Exit

當關閉 MyKey 時，Memory Key 快速存取和進階功能即關閉。

MyKey 跳出式訊息

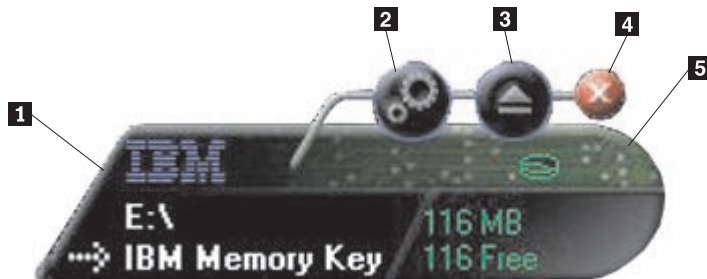
MyKey 使用跳出式訊息（如下所示）提供資訊或是通知使用者 Memory Key 事件。這類型的訊息會在幾秒後消失，或者可以按一下，立即關閉。



Memory Key 主控台

Memory Key 主控台可讓使用者存取 Memory Key 以儲存和擷取檔案、啓動已安裝的應用程式，以及自訂 Memory Key。

Memory Key 主控台顯示 Memory Key 標誌、Memory Key 隨身碟字母代號和 Memory Key 標籤。若要變更成個人自選的圖示或標籤，請參閱第 3-7 頁的『MyKey 個人化圖示』。若要移動 Memory Key 的操作介面，將滑鼠游標移至上方任一處按住左鍵，拖放到您要的位置，然後鬆開滑鼠左鍵。



- 1 瀏覽
- 2 工具
- 3 退出

- 4 關閉
- 5 LCD 顯示器

LCD

液晶顯示器 (LCD) 顯示 Memory Key 的總容量和可用空間。全部可用磁碟空間只剩 5% 或更少時，可用空間指示燈會變成紅色。

保密區域顯示

下方為 LCD 顯示器圖例，已顯示是否使用 KeySafe 登入「保密區域」。



寫入保護顯示

以下為 LCD 顯示器圖例，已顯示 Memory Key 是否有寫入保護。如需寫入保護的詳細資訊，請參閱第 3-8 頁的『啓用/停用寫入保護』。



按鈕

按一下以下說明的任何按鈕以啓用它們。

工具

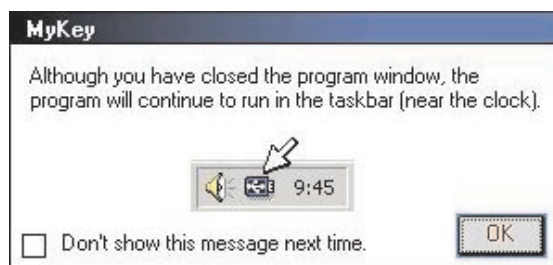
工具按鈕開啓 Memory Key 主控台功能表。這個功能表包含 Memory Key 主控台設定（請參閱第 3-5 頁的『Memory Key 主控台』）、同步化等進階功能，以及個人資料夾。

瀏覽

按一下 Memory Key 瀏覽按鈕，開啓 Windows 檔案總管中的 Memory Key 隨身碟，並且存取所有的檔案（包括在「保密區域」及公用檔案中所保存的檔案）。

關閉 (X)

按一下 **X** 以關閉 Memory Key 主控台。主控台會在資訊框圖示中消失後，會出現 Exiting Memory Key by Clicking X 訊息，告訴您程式會在工作列上繼續執行。如果您希望在關閉主控台時，不要再出現本訊息，請勾選核取方塊。



若要重新開啓 Memory Key 主控台，請連按兩下資訊框圖示，或從 MyKey 功能表選取 **Show**（請參閱第 3-3 頁的『MyKey 使用者自訂』）。

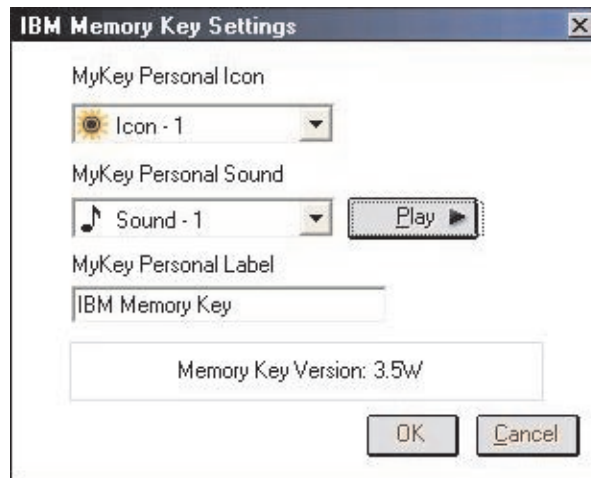
退出

退出鈕可協助使用者，在拔除 Memory Key 前，確認儲存在裡面的所有資料是完整的。按一下 **退出**，等待安全拔除訊息出現，再拔除您的 Memory Key。或者，針對 Windows 2000 和 Windows XP 以外的所有作業系統，您可以使用資訊框功能表中的綠色箭號，安全移除您的 Memory Key。

警告： 不按「退出」或工具列中的綠色箭號就拔除 Memory Key，可能會造成資料遺失！

將您的 Memory Key 個人化

若要用您自己的圖示、特殊音效或您自己的標籤將您的 Memory Key 個人化，請按一下 Memory Key 主控台上的**工具**按鈕，並且選取 **Settings**（請參閱第 3-3 頁的『MyKey 使用者自訂』）。接著會顯示 Memory Key Settings 視窗。



MyKey 個人化圖示

若要變更預設圖示，請開啓 MyKey Personal Icon 組合方塊，從下列選項中：

- 從 MyKey 內建的十一個圖示選取。
- 瀏覽您已經建立或想要從 Web 下載的檔案，藉此選取一個圖示檔案。

按一下 **OK** 以套用變更。

註： 如果 Memory Key 有寫入保護，這項作業就會失敗。

MyKey 個人化音效

若要變更預設音效，請開啓 MyKey Personal Sound 組合方塊，在以下選項中：

- 選取 MyKey 包含的十個音效任何一個。
- 瀏覽已經建立或想要從 Web 下載的檔案後，選取不同的音效。按一下 **Play**，收聽選取的音效。按一下 **OK** 套用變更。

註： 如果 Memory Key 有寫入保護，這項作業就會失敗。

MyKey 個人化標籤

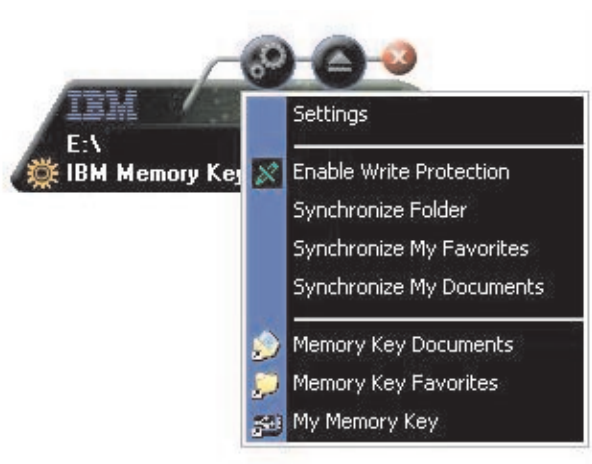
若要個人化 Memory Key，並簡化內容標識，請在 MyKey Personal Label 輸入文字以標示 Memory Key 的內容，例如您的姓名或類別（最多 14 個字元）。

Memory Key 版本資訊

您的 Memory Key 版本資訊是 Memory Key Preferences 視窗中列出的最後一個項目，如要聯絡「技術支援中心」給予協助，會需要本項資訊。

進階功能

MyKey 執行時，您可以存取一些讓 Memory Key 使用更簡便的進階功能。按一下**工具**，再按一下 Advanced Features 功能表中的選項即可，本節會說明這些功能。



登入/登出保密區域

如要使用 KeySafe 在 Memory Key 內建立的保密區域，在 Login Privacy Zone 視窗中輸入正確密碼，即可登入並配置此磁區。若五次登入失敗，以正確方式拔出 Memory Key，重新插入插槽中，確認密碼後再登入。

登入保密區域後，視窗的名稱變更為 Logout Privacy Zone。若要登出，只要按一下 Advanced Features 功能表中的這個選項即可。



啓用/停用寫入保護

若要在將 Memory Key 插入有安全和整合問題的電腦時，使 Memory Key 免於病毒入侵或資料遺失，MyKey 可讓您寫入保護您的 Memory Key。這可防止受保護的檔案被刪除、建立或修改。

同步化選項

MyKey 同步化選項可加速和簡化使兩部以上電腦之間的工作同步化、或是簡單地備份檔案程序。可用的同步化選項包括：

- **資料夾**：這個選項使所有資料夾和子資料夾同步化。
- **我的最愛**：這個選項使您在電腦上的「我的最愛」資料夾，以及在 Memory Key 上的 Memory Key Favorites 資料夾同步化。
- **我的文件**：這個選項使您在電腦上的 My Documents 資料夾，以及在 Memory Key 上的 Memory Key Documents 資料夾同步化。

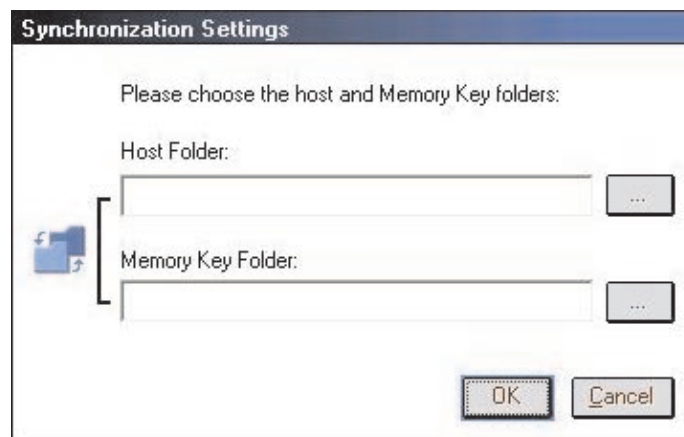
第一次使用資料夾

若要啓用資料夾同步化以進行第一次使用，請遵循下列步驟：

1. 按一下 MyKey 主控台上的工具，再選取 **Synchronize Folders**。您在新的電腦上第一次使用同步化功能，或和新的 Memory Key 一起使用時，Synchronization Settings 視窗會開啓。
2. 選取您要同步化的資料夾。第一個資料夾必須是現有的本端資料夾。第二個資料夾必須是現有的 Memory Key 資料夾。

註： 您第一次嘗試將相同的檔案同步化時，如果這些檔案同時存在於您的本端和 Memory Key 資料夾，MyKey 將不會知道哪個檔案是最新的版本。因此，請確定指定不同的名稱。

3. 按一下 **OK**，開始同步化程序，或按一下 **Cancel** 以便結束。

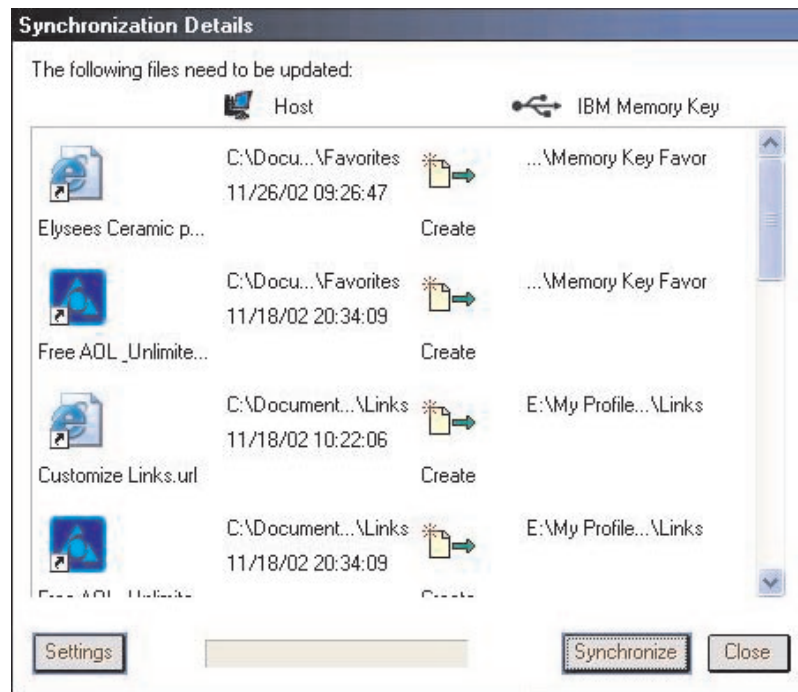


後續的資料夾使用

您選取要同步化的資料夾之後，請遵循下列步驟：

1. 從 MyKey Console Tools 功能表選取 **Synchronize Folders**。這會開啓 Synchronization Details 視窗。接著會顯示必要的動作清單，等待您批准。
2. 按一下 **Settings** 可存取/變更顯示設定。

3. 按一下 **Synchronize** 以授權所有檔案作業（清單無法部分選取）。



4. 如果在檔案作業期間發生錯誤（例如，磁碟已滿或是有不良路徑或檔案），就會顯示錯誤訊息。按一下 **OK**，繼續剩餘檔案的同步化，或是按一下 **Cancel**，以停止程序。
5. 有訊息顯示並指出同步化已完成時，按一下 **OK**。

資料夾同步化規則

下列規則套用同步化處理：

- **新檔案**：如果在任何資料夾中建立新檔案，MyKey 可讓您在其他資料夾中建立相同的檔案。
- **刪除檔案**：如果在任何資料夾中刪除檔案，MyKey 可讓您在其他資料夾中刪除檔案。
- **修改檔案**：如果在任何資料夾中修改檔案，MyKey 可讓您在其他資料夾中更換檔案。如果在所有資料夾中修改檔案，MyKey 可讓您略過這個檔案，而不必執行任何作業。
- **重新命名檔案**：重新命名檔案相當於刪除它，然後新立一個新檔案。因此，「刪除檔案」的規則適用。

建立個人資料夾

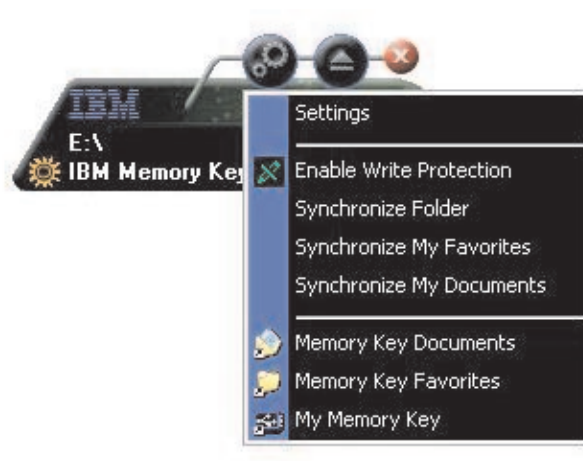
個人資料夾是檔案資料夾，可協助您分類和組織您的檔案，以便快速擷取。若要建立個人資料夾，請遵循下列步驟：

1. 按一下 **OK** 以確認個人資料夾的建立。



建立下列目錄：

- My Memory Key 類似桌面，儲存經常存取的一般檔案。
 - Memory Key Documents 類似您的 My Documents 資料夾，會儲存工作檔案，這個資料夾儲存來自 Synchronize My Documents 作業的檔案。
 - Memory Key Favorites 類似您的 Favorites 資料夾，會儲存您的最愛。這個資料夾儲存來自 Synchronize My Favorites 作業的檔案。
2. 若要存取在您個人資料夾中的任何檔案，您可以執行下列步驟之一：
 - 從 Windows 檔案總管開啓您的 My Profile 資料夾。
 - 在 Memory Key 主控台上按一下**工具**，以顯示和存取檔案。

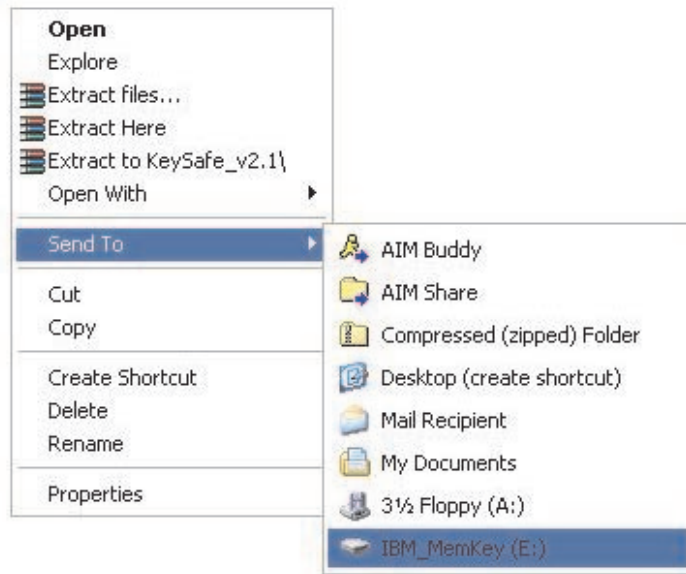


其他功能

以下說明 MemoryKey 其他兩項功能。

傳送至 Memory Key 隨身碟

會將您指定的 Memory Key 隨身碟自動新增到 Send To 功能表，讓您用滑鼠右鍵按一下檔案，將之儲存在您的 Memory Key 隨身碟。



自動執行

當您將您的 Memory Key 插入電腦的 USB 埠時，MyKey 自動執行功能可讓各種檔案，例如超本文標記語言 (HTML) 網頁自動啟動。

MyKey 執行 Memory Key autorun.ini 檔案。您可以從 MyKey Settings 視窗停用這個選項。MyKey 自動執行語法和 CD-ROM 自動執行語法略有不同，而且更有擴泛。

一般的 autorun.inf 檔案包含文字格式 (ASCII) 的兩行，以啟動 start.htm 檔案。例如，啟動 Memory Key 網頁的 autorun.inf 檔案語法可能是：

```
[launcher]
```

```
open=www.memorykey.com
```

再舉一例，啟動 Windows 計算機 (calc.exe) 的 autorun.inf 檔案語法可能是：

```
[launcher]
```

```
open=calc.exe
```

疑難排解

MyKey 顯示一些訊息和疑難排解的準則，如下所示：

- 嚴重錯誤 - 這個一般的錯誤訊息指出，已發生嚴重錯誤，因此應用程式無法回復。
- 不支援 Windows 版本 - 如果您嘗試在不支援的 Windows 版本上執行 MyKey，就會顯示這個訊息。（請參閱第 3-1 頁的『系統設定』。）

- 大字型 - MyKey 的設計是使用小字型，而且如果您使用大字型，就可能不會提供最佳的顯示檢視。若要切換至小字型，請開啓控制台，並選取以下順序：

顯示內容 → 設定 → 進階 → 字型大小。

- 無法連接 Memory Key - 這個訊息指出，MyKey 無法從版本號碼、容量、您的個人設定值等等取得資訊。
- 無法退出 Memory Key - 這個訊息通常表示，您在嘗試移除 Memory Key 之前，尚未將它上面的所有應用程式或檔案關閉。關閉任何開啓的應用程式或檔案，然後再嘗試移除 Memory Key。
- 現在無法停止 'xxx' 裝置。稍後再嘗試停止裝置 - 在「拔除或退出硬體」視窗中按一下 **Stop** 後，會出現此訊息。訊息的意思是，嘗試移除 Memory Key 之前，尚未將 Memory Key 內的應用程式或檔案全數關閉。關閉 MyKey 應用程式並且重試。如果訊息再度出現，請關閉所有開啓的應用程式或檔案，然後再移除 Memory Key。

註： 這個訊息是由作業系統產生，而不是 MyKey 應用程式，且只適用 Windows XP 或 Windows 2000。

常見問題

以下列出一些最常見的問題。

問： 如何檢查我正在使用哪個 MyKey 版本？

答： 最簡單的方式就是用滑鼠右鍵按一下 MyKey 資訊框圖示，然後按一下 **About**。

問： 我可以在電腦上使用擁有多個 Memory Key 的 MyKey 嗎？

答： 可以。

問： 我為何不能將檔案複製到我的 Memory Key 中？

答： 您的 Memory Key 可能有寫入保護，或者您可能沒有足夠的可用磁碟空間。如果您的 Memory Key 有寫入保護，您會在 MyKey 主控台的 LCD 顯示器上看到 Write Protection 標誌。

問： 我關閉 Memory Key 主控台之後，如何還原它？

答： 連按兩下或用滑鼠右鍵按一下您的 MyKey 資訊框，並選取 **Show**。

如何聯絡我們

請參閱第 A-1 頁的附錄 A, 『Service and Support』以取得聯絡資訊。

第 4 章 KeySafe 的多國語言介面操作

KeySafe 可讓您在 IBM Memory Key 上建立和存取有密碼保護的安全區，這個安全區稱為「保密區域」。訊息和提示會引導您以密碼設定 KeySafe 和自訂「保密區域」，以符合個人和企業在保護資訊方面的需求。本文彙總程序，也包括一些常見問題 (FAQ)。

系統需求

- Pentium II 266MHz
- 800KB 可用的磁碟空間
- 作業系統：Windows 2000 或 Windows XP
- 存取您的主磁碟機（通常是 C 磁碟機）

KeySafe 應用程式可在管理人員以及非管理人員模式內運作。如需更多資訊，請參閱第 5-1 頁的第 5 章，『非管理人員模式內的 KeySafe 與 MyKey』。

為了有最佳的效能，Memory Key 可和支援 24 位元色彩深度的圖形加速器搭配使用。

開始使用

警告： 您建立「保密區域」時，會將 Memory Key 格式化，而且所有的資料都會遺失。請先備份檔案，再建立「保密區域」。

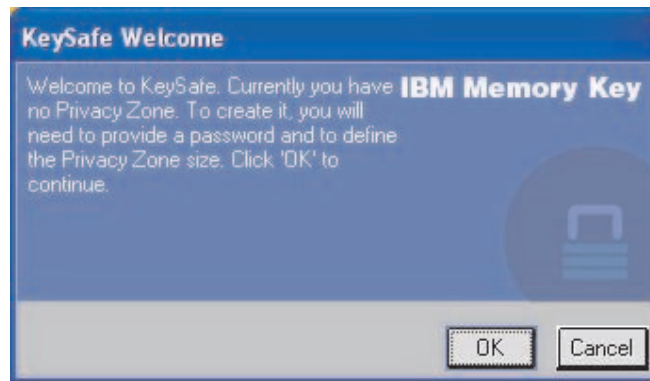
建立保密區域

若要建立保密區域，請執行下列步驟：

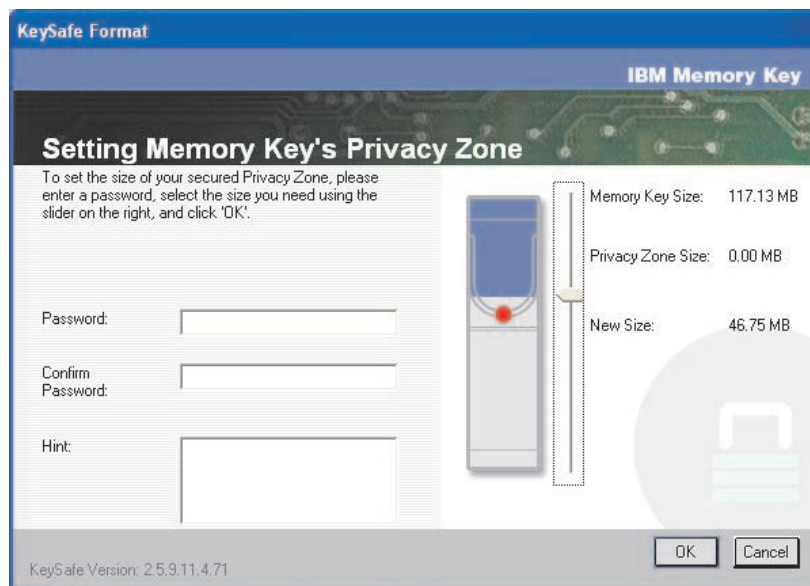
1. 選取已指定給 Memory Key 的抽取式磁碟機，連按兩下 **KeySafe** 圖示。
2. 從語言視窗選取您要使用的語言，然後按一下 **OK**。支援的語言包括英文、法文、西班牙文、義大利文、德文、葡萄牙（巴西）、中文（繁體或簡體）和日文。



3. 讀取 KeySafe Welcome 視窗後，按一下 **OK** 繼續。



4. 在 KeySafe Format 視窗的相關欄位中輸入下列資訊：
 - a. 密碼（必要）
 - b. 重新輸入相同的密碼以便確認（必要）
 - c. 提醒您密碼的提示（選用）
 - d. 首次建立「保密區域」時，移動 Memory Key 滑動軸（上或下），設定保密區域的大小。「保密區域」最大值限定在 Memory Key 容量的 90%。其區域呈藍色。



5. 設定「保密區域」大小之後，請按一下 **OK**。

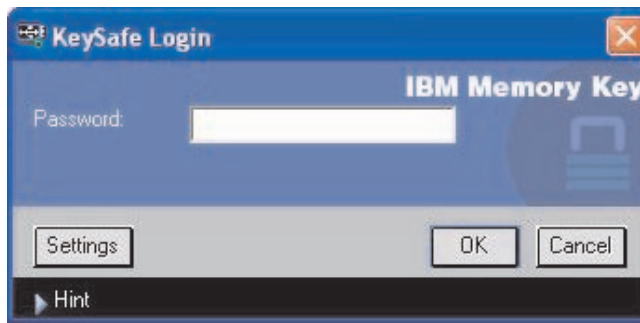
- 若要繼續執行格式化作業，按一下 **OK**。格式作業完成之後，再按一下 **OK**。您可以登入您的「保密區域」。



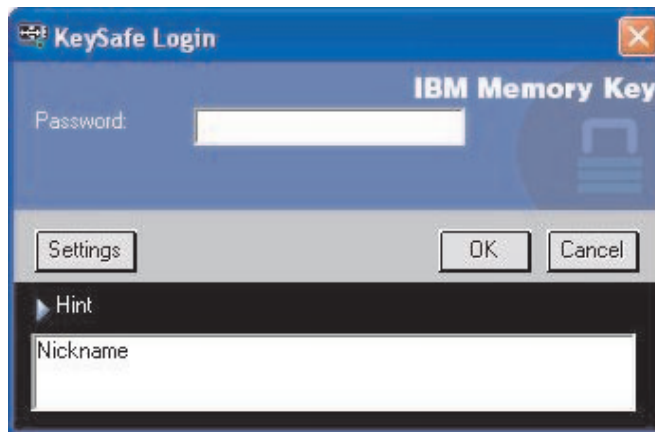
使用您的保密區域

若要使用您的「保密區域」，請執行下列步驟：

- 連接兩下桌面上的 **KeySafe** 圖示。KeySafe Login 視窗開啓。



- 若要登入「保密區域」，請輸入您的密碼，並按一下 **OK**。如果您忘記密碼，請按一下 **Hint**。如果輸入的密碼不正確，您會接收到一則訊息。如果您忘記密碼，請開啓 KeySafe Login 視窗中的 Hint 欄位。輸入正確的密碼之後，顯示登入成功的訊息。

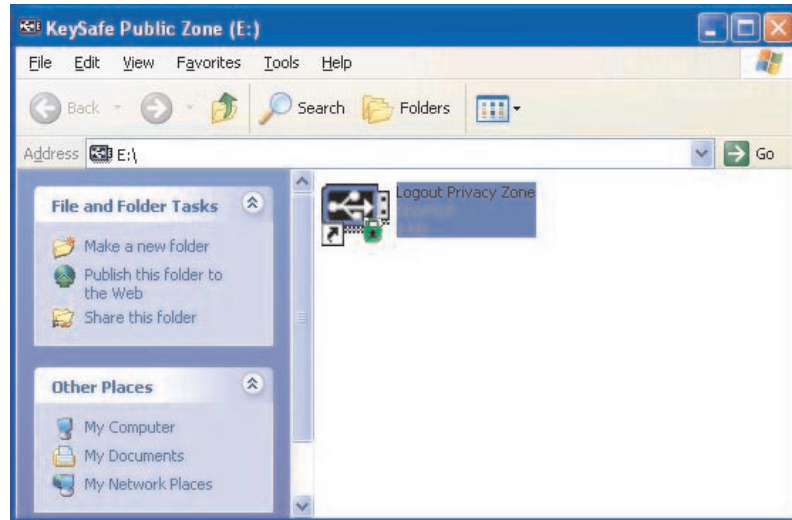


- 如果未輸入正確密碼五次，KeySafe 會自動終止，以保護資料。如果這種終止情況發生，請拔除 Memory Key，再重新插入。這樣又有五次機會輸入正確的密碼，五次錯誤後再度鎖住。

登出您的保密區域

若要登出您的「保密區域」，請執行下列步驟：

1. 儲存並關閉您從 Memory Key 開啓的所有檔案。
2. 連按兩下 **KeySafe** 圖示。



3. 在 KeySafe Logout 視窗中，按一下 **OK** 即可登出。

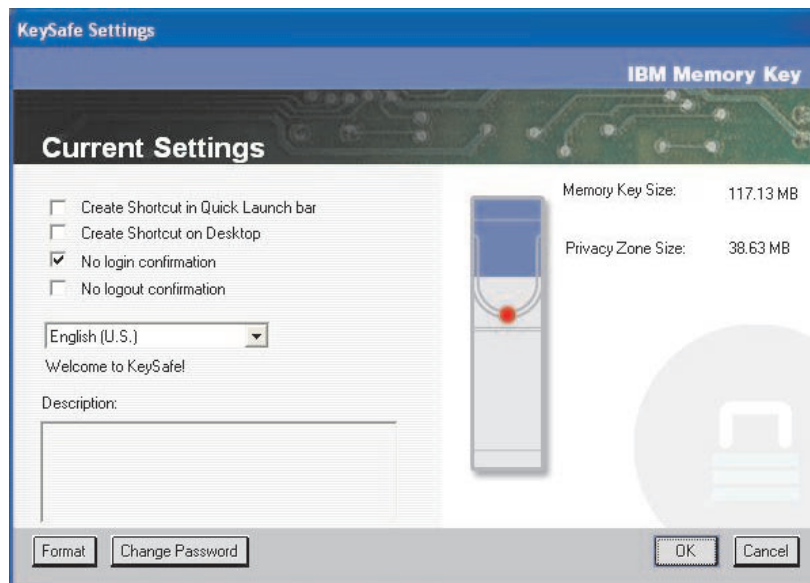
自訂您的設定

如下文所述，您可以自訂桌面和密碼的設定。

桌面

若要自訂您的桌面，請執行下列步驟：

1. 若要自訂桌面上 KeySafe 的各相關物件，請按一下「KeySafe Login」視窗裡的 **Settings**。「KeySafe Settings」視窗開啓，如下圖所示。

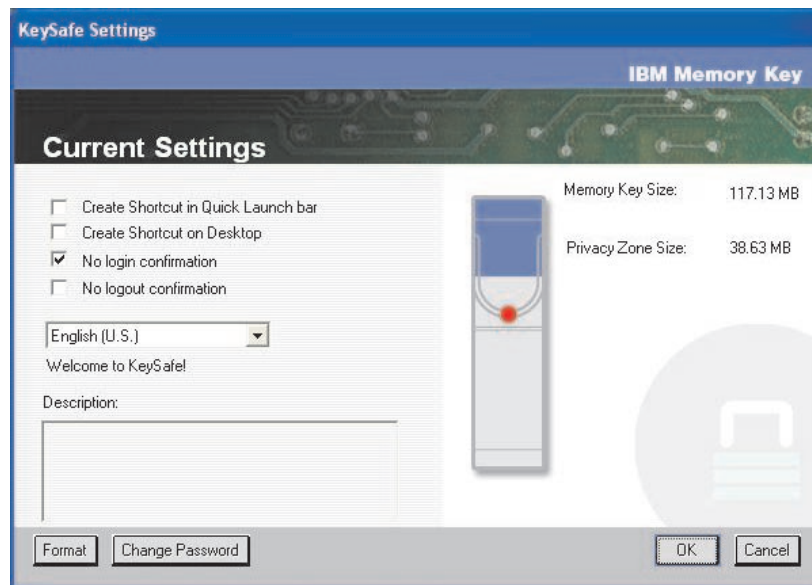


2. 按一下下列各選項，即可選取（滑鼠經過每一個選項時，「Description」欄位中會出現說明），有：
 - Create Shortcut in Quick Launch Bar
 - Create Shortcut on Desktop
 - No login confirmation
 - No logout confirmation
 - Language selection

變更您的密碼

較新版的 KeySafe 可以「KeySafe Settings」視窗內的 **Change Password** 按鈕變更密碼。若要使用 **Change Password** 按鈕，請執行下列步驟：

1. 按一下 KeySafe Login 視窗中的 **Settings**。「KeySafe Settings」視窗開啓，如下圖所示。



2. 按一下 **Change Password** 開啓對話方塊視窗。
3. 依序輸入現行的（舊）密碼、新密碼，再次輸入新密碼確認，再輸入提示。
4. 按一下 **OK** 結束對話方塊視窗。

警告： 未以 **Change Password** 按鈕變更密碼，Memory Key 會被格式化，「所有的」資料也會遺失。

變更您的保密區域

警告： 變更「保密區域」大小，需要格式化您的 Memory Key，如此會造成「所有」受保護和不受保護的資料遺失。

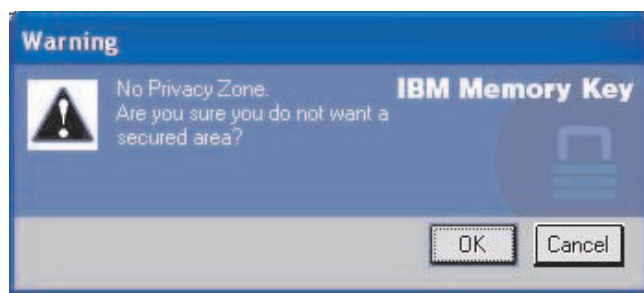
若要變更「保密區域」，請依照下列步驟：

1. 按一下「KeySafe Settings」視窗內的 **Format**。這會開啓「Format Options」視窗。
2. 輸入密碼，並且再輸入一次，確認密碼。
3. 輸入提示，以防忘記密碼時所用。

4. 用滑動軸設定「保密區域」大小。
5. 按一下 **OK**。

如果要停用「保密區域」，並將 Memory Key 全部的空間，以「公用區」使用，請依照下列步驟：

1. 重複上述 1 至 3 的步驟。
2. 用滑動軸設定「保密區域」大小為 0%。
3. 按一下 **OK** 確認作業。



FAQs

問： 如何檢查我正在使用哪個 KeySafe 版本

答： 最簡單的方式就是用滑鼠右鍵按一下 Memory Key 上的 KeySafe 圖示，然後按一下「內容和版本」。

問： 如何將 KeySafe 升級至最新版本

答： 到 Web (www.pc.ibm.com/support)，在 128 MB USB 2.0 High Speed Memory Key 項目下搜尋，並將壓縮檔下載到桌面。將它解壓縮並將 exe 檔複製到您的 Memory Key。連按兩下 KeySafe，以便從 Memory Key 啟動它。在桌面或快速啟動列上可能有您先前建立的捷徑，請勿使用，因為會啟動舊版的程式。

問： 我可以只變更我的 KeySafe 密碼，而不必格式化我的「保密區域」嗎

答： 可以，使用在「KeySafe 設定」視窗中的「變更密碼」即可。請注意，未使用「變更密碼」按鈕變更密碼時，會將您的 Memory Key 格式化，而且「所有」資料會遺失。

問： 我想要保護 Memory Key 上的所有資料。為何我被限定在 90% 的「保密區域最大值」內？

答： 您的 Memory Key 需要空間來執行 KeySafe，也需要關於您 Memory Key 的資訊。保留 Memory Key 可用空間的 10%，為升級和未來新增應用程式預留空間，以免干擾 KeySafe 作業。

問： 我如何知道我是在「保密區域」或是「公用區」工作

答： Windows 2000 環境下作業時，如果在「保密區域」內，KeySafe 圖示內會顯示紅色的上鎖符號。在 Windows 2000 或 XP 環境下，如果在「保密區域」時，根檔案資料夾或 Memory Key 圖示的背景顏色是藍色。（如果您電腦上選擇使用傳統的資料夾檢視，您就不會看到藍色背景。）

問： 如何在「公用區」和「保密區域」之間切換

答： 從桌面、Memory Key 或快速啟動列啟動 KeySafe。如果您看到有提示詢問您的密碼，就表示您目前在「公用區」。若要切換至「保密區域」，請輸入您的密碼，並按一下 OK。如果您看到蹦現視窗，其中有一個提示請您確認從「保密區域」登出，這表示您正在您的「保密區域」中。若要切換，請按一下 OK。若要維持登入您的「保密區域」，請按一下 Cancel。

問： 我意外從 Memory Key 刪除 KeySafe，我如何才可以存取「保密區域」內的資料？

從隨附於 Memory Key 的光碟複製 KeySafe exe，或至 (<http://www.pc.ibm.com>)；在 128 MB USB 2.0 High Speed Memory Key 項目下搜尋該檔案。**答：** 您將可以存取先前指定的「保密區域」。

問： 我可以在電腦上使用擁有多個 Memory Key 的 KeySafe 嗎

答： 可以。所有的 IBM 64 MB、128 MB 和 256 MB Memory Keys 都支援安裝在您作業系統中的 KeySafe 應用程式。

問： 我可以同時使用多個 Memory Key 和 KeySafe 嗎

A: 不行。

問： 如果 KeySafe 格式化失敗，要同時格式化 Memory Key 上的「公用區」和「保密區域」有替代方法嗎

答： 可以。使用 OS 格式公用程式，然後複製 KeySafe，您就可以備妥使用它了。

第 5 章 非管理人員模式內的 KeySafe 與 MyKey

本章節提供在非管理人員模式中使用 KeySafe 和 MyKey 應用程式的資訊。

系統需求

- Pentium II 266 MHz
- 64 MB RAM
- 900KB 可用的磁碟空間
- 作業系統：Windows 2000 和 Windows XP

安裝說明

遵循下列指示安裝服務項目。

1. 以管理人員身分登入。
2. 將 SERVICE FOR NON-ADMIN.ZIP 檔案 (位於 Memory Key 隨附的光碟內) 解壓縮到所有使用者都可存取的資料夾 (例如 C:\DiskOnKey service、C:\Program files、C:\winnt\system32)。請勿使用會限制不同使用者存取的資料夾，像是「桌面」目錄或「我的文件」目錄。
3. 啟動安裝 SERVICE.BAT 檔案來安裝服務項目。

註： 只有管理人員可以安裝服務。

4. 若要檢查服務是否已經正確安裝，請至設定 → 控制台 → 系統管理工具 → 服務，查看 hdlSrv 服務。

一旦已經安裝服務，KeySafe 和 MyKey 應用程式就可在管理人員和非管理人員專用權下執行。

解除服務的安裝

依照下列指示解除已安裝的服務。

- 以管理人員身分登入。
- 啟動 UNINSTALL SERVICE.BAT 檔案 (在 key 隨附的光碟內) 解除已安裝的服務。

第 6 章 使用 IBM Memory Key Boot Utility

IBM Memory Key Boot Utility 可讓您的 Memory Key 當成開機磁片使用。以應用程式將您的 Memory Key 變成開機磁片之後，即可從 Memory Key 啓動 IBM 電腦。Key 啓動 IBM 電腦。

系統設定需求

- 支援可開機 USB 裝置的 BIOS。如果您無法確認 BIOS 是否支援可開機的 USB 裝置的話，請聯絡您的電腦製造廠商。如是必要的更新，大多會有提供。
- 如有合適的話，您的電腦或是 BIOS 更新都會附有 BIOS 說明文件。

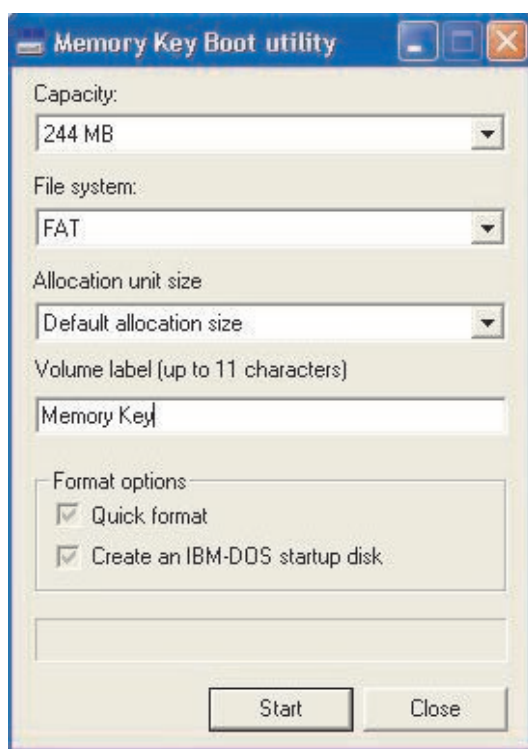
有關支援連結至 USB 儲存裝置的 IBM 電腦相關資訊，請造訪 <http://www.ibm.com/pc/support> 並且搜尋 128 MB USB 2.0 High Speed Memory Key。

- Pentium II 266 MHz
- 1.5 MB 可用磁碟空間（C 磁碟）
- 作業系統：Windows 2000 或 Windows XP

建立 IBM Boot Memory Key

若要建立 Boot Memory Key，請執行下列步驟：

1. 連按兩下光碟上的 **Boot Application** 圖示。隨即開啓應用程式視窗。



2. 插入您的 **Memory Key**。容量或檔案系統等磁碟內容顯示在應用程式視窗的相關欄位中。
3. 若要建立磁碟機標籤，請在「磁碟機標籤」欄位中輸入標籤名稱（最多 11 個字元）。
4. 若要開始建立開機磁片，請按一下 **Start**。隨即出現一則警告訊息，通知您將會刪除您所有的檔案。若要繼續，請按一下 **OK**。若要取消格式化程序，請按一下 **Cancel**。
5. 按一下 **Start** 之後，會出現一個進度列，顯示格式化程序的狀態。在格式化完成後，會出現一則訊息，指出格式化程序順利完成。
6. 若要在不建立開機磁片之下結束程式，請按一下 **Cancel**。

注意事項:

- a. 建立開機磁片需要格式化 **Memory Key**，這會刪除在 **Key** 上的所有檔案。
- b. 如果您開始格式化程序，在它結束之前，您將無法中止它。
- c. 請「勿」在格式化時移除 **Memory Key**，並請確定關閉可能使用 **Memory Key** 的所有應用程式。

以 IBM Memory Key 啓動電腦

若要以 IBM Memory Key 啓動電腦，請執行下列步驟：

1. 請關閉系統。將開機 **Memory Key** 插入任何可用的 **USB** 插槽。
2. 開啓您的系統，並使用桌面或筆記型電腦說明文件中列示的步驟，以存取您的 **BIOS** 設定。尋找一個區段，該區段決定在您桌面或筆記型電腦上的磁片「開機」或「啓動」次序。
3. 將次序變更如下：
 - 舊型磁碟機（可能不適用，取決於您的桌上型電腦或筆記型電腦配置）
 - **ATAPI CD-ROM** 光碟機或光碟機
 - 硬碟 - **USB Memory Key**
 - 硬碟 - 您的主要硬碟機或合作業系統或資料檔案的磁碟
4. 儲存您的設定變更，並且結束 **BIOS**。
5. 重新啓動您的電腦，它應該使用 **Memory Key** 啓動一個 **DOS** 提示。

疑難排解

- **在擁有「保密區域」的 Key 上建立開機磁片**：如果您之前在 **Memory Key** 上建立了開機磁片（使用 **KeySafe** 應用程式），您將需要先刪除這個「保密區域」，然後才能執行開機應用程式。刪除這個「保密區域」的方法是執行 **KeySafe** 並且將「保密區域」設定為 "0"。如需其他相關資訊，請參閱光碟上的 **KeySafe** 手冊。
- **在啓用寫入保護 Key 上建立開機磁片**：如果您之前將您的 **Key** 設定為寫入保護（使用 **MyKey** 應用程式），您將需要先停用這個功能，然後才能執行開機應用程式。如需其他相關資訊，請參閱光碟上的 **MyKey** 手冊。
- **同時使用多重 Memory Key**：如果您已插入多個 **Memory Key**，就會有提示請您移除 **Key**，只保留您要做為插入的開機磁片之 **Key**。

附錄 A. Service and Support

The following information describes the technical support that is available for your product, during the warranty period or throughout the life of the product. Refer to your IBM Statement of Limited Warranty for a full explanation of IBM warranty terms.

Online technical support

Online technical support is available during the life of your product through the Personal Computing Support Web site at <http://www.ibm.com/pc/support> .

During the warranty period, assistance for replacement or exchange of defective components is available. In addition, if your IBM option is installed in an IBM computer, you might be entitled to service at your location. Your technical support representative can help you determine the best alternative.

Telephone technical support

Installation and configuration support through the IBM Support Center will be withdrawn or made available for a fee, at IBM's discretion, 90 days after the option has been withdrawn from marketing. Additional support offerings, including step-by-step installation assistance, are available for a nominal fee.

To assist the technical support representative, have available as much of the following information as possible:

- Option name
- Option number
- Proof of purchase
- Computer manufacturer, model, serial number (if IBM), and manual
- Exact wording of the error message (if any)
- Description of the problem
- Hardware and software configuration information for your system

If possible, be at your computer. Your technical support representative might want to walk you through the problem during the call.

For the support telephone number and support hours by country, refer to the following table. If the number for your country or region is not listed, contact your IBM reseller or IBM marketing representative. Response time may vary depending on the number and nature of the calls received.

Phone numbers are subject to change without notice. For the latest phone number list, go to <http://www.ibm.com/pc/support> and click **Support Phone List**.

Country or Region	Telephone Number	Country or Region	Telephone Number
Argentina	0800-666-0011	Malaysia	03-7727-7800
Australia	1300-130-426	Mexico	001-866-434-2080
Austria	01-24592-5901	Netherlands	020-514-5770
Belgium	Dutch 02-210-9820 French 02-210-9800	New Zealand	0800-446-149
Bolivia	0800-0189	Norway	66 81 11 00
Brazil	55-11-3889-8986	Peru	0-800-50-866
Canada	1-800-565-3344 Toronto 416-383-3344	Philippines	632-995-2225
Chile	800-224-488	Portugal	21-791 51 47
China (PRC)	800-810-1818	Russia	095-940-2000
China (Hong Kong S.A.R.)	852-2825-7799	Singapore	1800-840-9911
Columbia	980-912-3021	Spain	91-662 49 16
Denmark	45 20 82 00	Sweden	08-477 4420
Ecuador	1-800-426911 (option #4)	Switzerland	058-333-09-00
Finland	09-459 69 60	Taiwan	886-2-2725-9799
France	02 38 55 74 50	Thailand	66-2-273-4000
Germany	07032-1549 201	Turkey	00-800-446-32-041
Indonesia	021-523-8535	United Kingdom	0-1475-555 055
Ireland	01-815-9202	United States	1-800-426-7378
Italy	02-7031-6101	Uruguay	000-411-005-6649
Japan	Consumer customers 0120-887-870 Business customers 0120-887-874	Venezuela	0-800-100-2011
Luxembourg	298-977 5063	Vietnam	848-8295-160

附錄 B. IBM Statement of Limited Warranty - Z125-4753-07 - 11/2002

Part 1 - General Terms

*This Statement of Limited Warranty includes Part 1 - General Terms, Part 2 - Country-unique Terms, and Part 3 - Warranty Information. The terms of Part 2 replace or modify those of Part 1. The warranties provided by IBM in this Statement of Limited Warranty apply only to Machines you purchase for your use, and not for resale. The term "Machine" means an IBM machine, its features, conversions, upgrades, elements, or accessories, or any combination of them. The term "Machine" does not include any software programs, whether pre-loaded with the Machine, installed subsequently or otherwise. **Nothing in this Statement of Limited Warranty affects any statutory rights of consumers that cannot be waived or limited by contract.***

What this Warranty Covers

IBM warrants that each Machine 1) is free from defects in materials and workmanship and 2) conforms to IBM's Official Published Specifications ("Specifications") which are available on request. The warranty period for the Machine starts on the original Date of Installation and is specified in Part 3 - Warranty Information. The date on your invoice or sales receipt is the Date of Installation unless IBM or your reseller informs you otherwise. Many features, conversions, or upgrades involve the removal of parts and their return to IBM. A part that replaces a removed part will assume the warranty service status of the removed part. Unless IBM specifies otherwise, these warranties apply only in the country or region in which you purchased the Machine.

THESE WARRANTIES ARE YOUR EXCLUSIVE WARRANTIES AND REPLACE ALL OTHER WARRANTIES OR CONDITIONS, EXPRESS OR IMPLIED, INCLUDING, BUT NOT LIMITED TO, THE IMPLIED WARRANTIES OR CONDITIONS OF MERCHANTABILITY AND FITNESS FOR A PARTICULAR PURPOSE. SOME STATES OR JURISDICTIONS DO NOT ALLOW THE EXCLUSION OF EXPRESS OR IMPLIED WARRANTIES, SO THE ABOVE EXCLUSION MAY NOT APPLY TO YOU. IN THAT EVENT, SUCH WARRANTIES ARE LIMITED IN DURATION TO THE WARRANTY PERIOD. NO WARRANTIES APPLY AFTER THAT PERIOD. SOME STATES OR JURISDICTIONS DO NOT ALLOW LIMITATIONS ON HOW LONG AN IMPLIED WARRANTY LASTS, SO THE ABOVE LIMITATION MAY NOT APPLY TO YOU.

What this Warranty Does not Cover

This warranty does not cover the following:

- any software programs, whether pre-loaded or shipped with the Machine, or installed subsequently;
- failure resulting from misuse (including but not limited to use of any Machine capacity or capability, other than that authorized by IBM in writing), accident, modification, unsuitable physical or operating environment, or improper maintenance by you;

- failure caused by a product for which IBM is not responsible; and
- any non-IBM products, including those that IBM may procure and provide with or integrate into an IBM Machine at your request.

The warranty is voided by removal or alteration of identification labels on the Machine or its parts.

IBM does not warrant uninterrupted or error-free operation of a Machine.

Any technical or other support provided for a Machine under warranty, such as assistance via telephone with "how-to" questions and those regarding Machine set-up and installation, is provided **WITHOUT WARRANTIES OF ANY KIND**.

How to Obtain Warranty Service

If the Machine does not function as warranted during the warranty period, contact IBM or your reseller to obtain warranty service. If you do not register the Machine with IBM, you may be required to present proof of purchase as evidence of your entitlement to warranty service.

What IBM Will Do to Correct Problems

When you call for service, you must follow the problem determination and resolution procedures that IBM specifies. A technician will attempt to make an initial diagnosis of your problem and help you resolve it over the telephone.

The type of warranty service applicable to your Machine is specified in Part 3 - Warranty Information.

You are responsible for downloading and installing designated Machine Code (microcode, basic input/output system code (called "BIOS"), utility programs, device drivers, and diagnostics delivered with an IBM Machine) and other software updates from an IBM Internet Web site or from other electronic media, and following the instructions that IBM provides.

If your problem can be resolved with a Customer Replaceable Unit ("CRU") (e.g., keyboard, mouse, speaker, memory, hard disk drive and other easily replaceable parts), IBM will ship these parts to you for replacement by you.

If the Machine does not function as warranted during the warranty period and your problem cannot be resolved over the telephone, through your application of Machine Code or software updates, or with a CRU, IBM or your reseller, if approved by IBM to provide warranty service, will either, at its discretion, 1) repair it to make it function as warranted, or 2) replace it with one that is at least functionally equivalent. If IBM is unable to do either, you may return the Machine to your place of purchase and your money will be refunded.

IBM or your reseller will also manage and install selected engineering changes that apply to the Machine.

Exchange of a Machine or Part

When the warranty service involves the exchange of a Machine or part, the item IBM or your reseller replaces becomes its property and the replacement becomes yours. You represent that all removed items are genuine and unaltered. The replacement may not be new, but will be in good working order and at least functionally equivalent to the item replaced. The replacement assumes the warranty service status of the replaced item.

Your Additional Responsibilities

Before IBM or your reseller exchanges a Machine or part, you agree to remove all features, parts, options, alterations, and attachments not under warranty service.

You also agree to:

1. ensure that the Machine is free of any legal obligations or restrictions that prevent its exchange;
2. obtain authorization from the owner to have IBM or your reseller service a Machine that you do not own; and
3. where applicable, before service is provided:
 - a. follow the service request procedures that IBM or your reseller provides;
 - b. backup or secure all programs, data, and funds contained in the Machine;
 - c. IBM or your reseller with sufficient, free, and safe access to your facilities to permit IBM to fulfill its obligations; and
 - d. inform IBM or your reseller of changes in the Machine's location.
4. (a) ensure all information about identified or identifiable individuals (Personal Data) is deleted from the Machine (to the extent technically possible), (b) allow IBM, your reseller or an IBM supplier to process on your behalf any remaining Personal Data as IBM or your reseller considers necessary to fulfill its obligations under this Statement of Limited Warranty (which may include shipping the Machine for such processing to other IBM service locations around the world), and (c) ensure that such processing complies with any laws applicable to such Personal Data.

Limitation of Liability

IBM is responsible for loss of, or damage to, your Machine only while it is 1) in IBM's possession or 2) in transit in those cases where IBM is responsible for the transportation charges.

Neither IBM nor your reseller are responsible for any of your confidential, proprietary or personal information contained in a Machine which you return to IBM for any reason. You should remove all such information from the Machine prior to its return.

Circumstances may arise where, because of a default on IBM's part or other liability, you are entitled to recover damages from IBM. In each such instance, regardless of the basis on which you are entitled to claim damages from IBM (including fundamental breach, negligence, misrepresentation, or other contract or tort claim), except for any liability that cannot be waived or limited by applicable laws, IBM is liable for no more than

1. damages for bodily injury (including death) and damage to real property and tangible personal property; and

2. the amount of any other actual direct damages, up to the charges (if recurring, 12 months' charges apply) for the Machine that is subject of the claim. For purposes of this item, the term "Machine" includes Machine Code and Licensed Internal Code ("LIC").

This limit also applies to IBM's suppliers and your reseller. It is the maximum for which IBM, its suppliers, and your reseller are collectively responsible.

UNDER NO CIRCUMSTANCES IS IBM, ITS SUPPLIERS OR RESELLERS LIABLE FOR ANY OF THE FOLLOWING EVEN IF INFORMED OF THEIR POSSIBILITY: 1) THIRD PARTY CLAIMS AGAINST YOU FOR DAMAGES (OTHER THAN THOSE UNDER THE FIRST ITEM LISTED ABOVE); 2) LOSS OF, OR DAMAGE TO, DATA; 3) SPECIAL, INCIDENTAL, OR INDIRECT DAMAGES OR FOR ANY ECONOMIC CONSEQUENTIAL DAMAGES; OR 4) LOST PROFITS, BUSINESS REVENUE, GOODWILL OR ANTICIPATED SAVINGS. SOME STATES OR JURISDICTIONS DO NOT ALLOW THE EXCLUSION OR LIMITATION OF INCIDENTAL OR CONSEQUENTIAL DAMAGES, SO THE ABOVE LIMITATION OR EXCLUSION MAY NOT APPLY TO YOU. SOME STATES OR JURISDICTIONS DO NOT ALLOW LIMITATIONS ON HOW LONG AN IMPLIED WARRANTY LASTS, SO THE ABOVE LIMITATION MAY NOT APPLY TO YOU.

Governing Law

Both you and IBM consent to the application of the laws of the country in which you acquired the Machine to govern, interpret, and enforce all of your and IBM's rights, duties, and obligations arising from, or relating in any manner to, the subject matter of this Statement of Limited Warranty, without regard to conflict of law principles.

THESE WARRANTIES GIVE YOU SPECIFIC LEGAL RIGHTS AND YOU MAY ALSO HAVE OTHER RIGHTS WHICH VARY FROM STATE TO STATE OR JURISDICTION TO JURISDICTION.

Jurisdiction

All of our rights, duties, and obligations are subject to the courts of the country in which you acquired the Machine.

Part 2 - Country-unique Terms

AMERICAS

ARGENTINA

Governing Law: *The following is added after the first sentence:*

Any litigation arising from this Statement of Limited Warranty will be settled exclusively by the Ordinary Commercial Court of the city of Buenos Aires.

BRAZIL

Governing Law: *The following is added after the first sentence:*

Any litigation arising from this Statement of Limited Warranty will be settled exclusively by the court of Rio de Janeiro, RJ.

Peru

Limitation of Liability: *The following is added at the end of this section:*

In accordance with Article 1328 of the Peruvian Civil Code the limitations and exclusions specified in this section will not apply to damages caused by IBM's willful misconduct ("dolo") or gross negligence ("culpa inexcusable").

NORTH AMERICA

How to Obtain Warranty Service: *The following is added to this Section:*

To obtain warranty service from IBM in Canada or the United States, call 1-800-IBM-SERV (426-7378).

CANADA

Limitation of Liability: *The following replaces item 1 of this section:*

1. damages for bodily injury (including death) or physical harm to real property and tangible personal property caused by IBM's negligence; and

Governing Law: *The following replaces 『laws of the country in which you acquired the Machine』 in the first sentence:*
laws in the Province of Ontario.

UNITED STATES

Governing Law: *The following replaces 『laws of the country in which you acquired the Machine』 in the first sentence:*
laws of the State of New York.

ASIA PACIFIC

AUSTRALIA

What this Warranty Covers: *The following paragraph is added to this Section:*

The warranties specified in this Section are in addition to any rights you may have under the Trade Practices Act 1974 or other similar legislation and are only limited to the extent permitted by the applicable legislation.

Limitation of Liability: *The following is added to this Section:*

Where IBM is in breach of a condition or warranty implied by the Trade Practices Act 1974 or other similar legislation, IBM's liability is limited to the repair or replacement of the goods or the supply of equivalent goods. Where that condition or warranty relates to right to sell, quiet possession or clear title, or the goods are of a kind ordinarily acquired for personal, domestic or household use or consumption, then none of the limitations in this paragraph apply.

Governing Law: *The following replaces 『laws of the country in which you acquired the Machine』 in the first sentence:*
laws of the State or Territory.

CAMBODIA, LAOS, AND VIETNAM

Governing Law: *The following replaces 『laws of the country in which you acquired the Machine』 in the first sentence:*
laws of the State of New York, United States of America.

CAMBODIA, INDONESIA, LAOS, AND VIETNAM

Arbitration: The following is added under this heading:

Disputes arising out of or in connection with this Statement of Limited Warranty shall be finally settled by arbitration which shall be held in Singapore in accordance with the Arbitration Rules of Singapore International Arbitration Center ("SIAC Rules") then in effect. The arbitration award shall be final and binding for the parties without appeal and shall be in writing and set forth the findings of fact and the conclusions of law.

The number of arbitrators shall be three, with each side to the dispute being entitled to appoint one arbitrator. The two arbitrators appointed by the parties shall appoint a third arbitrator who shall act as chairman of the proceedings. Vacancies in the post of chairman shall be filled by the president of the SIAC. Other vacancies shall be filled by the respective nominating party. Proceedings shall continue from the stage they were at when the vacancy occurred.

If one of the parties refuses or otherwise fails to appoint an arbitrator within 30 days of the date the other party appoints its, the first appointed arbitrator shall be the sole arbitrator, provided that the arbitrator was validly and properly appointed.

All proceedings shall be conducted, including all documents presented in such proceedings, in the English language. The English language version of this Statement of Limited Warranty prevails over any other language version.

HONG KONG S.A.R. OF CHINA AND MACAU S.A.R. OF CHINA

Governing Law: *The following replaces 『laws of the country in which you acquired the Machine』 in the first sentence:*
laws of Hong Kong Special Administrative Region of China.

INDIA

Limitation of Liability: *The following replaces items 1 and 2 of this Section:*

1. liability for bodily injury (including death) or damage to real property and tangible personal property will be limited to that caused by IBM's negligence; and
2. as to any other actual damage arising in any situation involving nonperformance by IBM pursuant to, or in any way related to the subject of this Statement of Limited Warranty, , the charge paid by you for the individual Machine that is the subject of the claim. For purposes of this item, the term "Machine" includes Machine Code and Licensed Internal Code ("LIC").

Arbitration: *The following is added under this heading :*

Disputes arising out of or in connection with this Statement of Limited Warranty shall be finally settled by arbitration which shall be held in Bangalore, India in accordance with the laws of India then in effect. The arbitration award shall be final and binding for the parties without appeal and shall be in writing and set forth the findings of fact and the conclusions of law.

The number of arbitrators shall be three, with each side to the dispute being entitled to appoint one arbitrator. The two arbitrators appointed by the parties shall appoint a third arbitrator who shall act as chairman of the proceedings. Vacancies in the post of chairman shall be filled by the president of the Bar Council of India. Other vacancies shall be filled by the respective nominating party. Proceedings shall continue from the stage they were at when the vacancy occurred.

If one of the parties refuses or otherwise fails to appoint an arbitrator within 30 days of the date the other party appoints its, the first appointed arbitrator shall be the sole arbitrator, provided that the arbitrator was validly and properly appointed.

All proceedings shall be conducted, including all documents presented in such proceedings, in the English language. The English language version of this Statement of Limited Warranty prevails over any other language version.

JAPAN

Governing Law: *The following sentence is added to this section:*

Any doubts concerning this Statement of Limited Warranty will be initially resolved between us in good faith and in accordance with the principle of mutual trust.

MALAYSIA

Limitation of Liability: *The word "SPECIAL" in item 3 of the fifth paragraph is deleted.*

NEW ZEALAND

What this Warranty Covers: *The following paragraph is added to this section:*

The warranties specified in this section are in addition to any rights you may have under the Consumer Guarantees Act 1993 or other legislation which cannot be excluded or limited. The Consumer Guarantees Act 1993 will not apply in respect of any goods which IBM provides, if you require the goods for the purposes of a business as defined in that Act.

Limitation of Liability: *The following is added to this section:*

Where Machines are not acquired for the purposes of a business as defined in the Consumer Guarantees Act 1993, the limitations in this section are subject to the limitations in that Act.

PEOPLE'S REPUBLIC OF CHINA (PRC)

Governing Law: *The following replaces "laws of the country in which you acquired the Machine" in the first sentence:*

laws of the State of New York, United States of America (except when local law requires otherwise).

PHILIPPINES

Limitation of Liability: *Item 3 in the fifth paragraph is replaced by the following:*

SPECIAL (INCLUDING NOMINAL AND EXEMPLARY DAMAGES), MORAL, INCIDENTAL, OR INDIRECT DAMAGES FOR ANY ECONOMIC CONSEQUENTIAL DAMAGES; OR

Arbitration: The following is added under this heading

Disputes arising out of or in connection with this Statement of Limited Warranty shall be finally settled by arbitration which shall be held in Metro Manila, Philippines in accordance with the laws of the Philippines then in effect. The arbitration award shall be final and binding for the parties without appeal and shall be in writing and set forth the findings of fact and the conclusions of law.

The number of arbitrators shall be three, with each side to the dispute being entitled to appoint one arbitrator. The two arbitrators appointed by the parties shall appoint a third arbitrator who shall act as chairman of the proceedings. Vacancies in the post of chairman shall be filled by the president of the Philippine Dispute Resolution Center, Inc.. Other vacancies shall be filled by the respective nominating party. Proceedings shall continue from the stage they were at when the vacancy occurred.

If one of the parties refuses or otherwise fails to appoint an arbitrator within 30 days of the date the other party appoints its, the first appointed arbitrator shall be the sole arbitrator, provided that the arbitrator was validly and properly appointed.

All proceedings shall be conducted, including all documents presented in such proceedings, in the English language. The English language version of this Statement of Limited Warranty prevails over any other language version.

SINGAPORE

Limitation of Liability: The words "**SPECIAL**" and "**ECONOMIC**" in item 3 in the fifth paragraph are deleted.

EUROPE, MIDDLE EAST, AFRICA (EMEA)

THE FOLLOWING TERMS APPLY TO ALL EMEA COUNTRIES:

The terms of this Statement of Limited Warranty apply to Machines purchased from IBM or an IBM reseller.

How to Obtain Warranty Service: If you purchase a Machine in Austria, Belgium, Cyprus, Denmark, Estonia, Finland, France, Germany, Greece, Iceland, Ireland, Italy, Latvia, Liechtenstein, Lithuania, Luxembourg, Monaco, Netherlands, Norway, Portugal, Spain, San Marino, Sweden, Switzerland, United Kingdom or Vatican State, you may obtain warranty service for that Machine in any of those countries from either (1) an IBM reseller approved to perform warranty service or (2) from IBM, provided the Machine has been announced and made available by IBM in the country in which you wish to obtain service. If you

purchased a Personal Computer Machine in Albania, Armenia, Belarus, Bosnia and Herzegovina, Bulgaria, Croatia, Czech Republic, Georgia, Hungary, Kazakhstan, Kyrgyzstan, Federal Republic of Yugoslavia, Former Yugoslav Republic of Macedonia (FYROM), Moldova, Poland, Romania, Russia, Slovak Republic, Slovenia, or Ukraine, you may obtain warranty service for that Machine in any of those countries from either (1) an IBM reseller approved to perform warranty service or (2) from IBM.

If you purchase a Machine in a Middle Eastern or African country, you may obtain warranty service for that Machine from the IBM entity within the country of purchase, if that IBM entity provides warranty service in that country, or from an IBM reseller, approved by IBM to perform warranty service on that Machine in that country. Warranty service in Africa is available within 50 kilometers of an IBM approved service provider. You are responsible for transportation costs for Machines located outside 50 kilometers of an IBM approved service provider.

*Add the following paragraph in **Western Europe** (Austria, Belgium, Cyprus, Denmark, Finland, France, Germany, Greece, Iceland, Ireland, Italy, Liechtenstein, Luxembourg, Monaco, Netherlands, Norway, Portugal, Spain, San Marino, Sweden, Switzerland, United Kingdom, Vatican State):*

The warranty for Machines acquired in Western Europe shall be valid and applicable in all Western Europe countries provided the Machines have been announced and made available in such countries.

Governing Law:

The phrase "the laws of the country in which you acquired the Machine" is replaced by:

1) "the laws of Austria" in **Albania, Armenia, Azerbaijan, Belarus, Bosnia-Herzegovina, Bulgaria, Croatia, Georgia, Hungary, Kazakhstan, Kyrgyzstan, FYR Macedonia, Moldova, Poland, Romania, Russia, Slovakia, Slovenia, Tajikistan, Turkmenistan, Ukraine, Uzbekistan, and FR Yugoslavia;** 2) "the laws of France" in **Algeria, Benin, Burkina Faso, Cameroon, Cape Verde, Central African Republic, Chad, Comoros, Congo Republic, Djibouti, Democratic Republic of Congo, Equatorial Guinea, French Guiana, French Polynesia, Gabon, Gambia, Guinea, Guinea-Bissau, Ivory Coast, Lebanon, Madagascar, Mali, Mauritania, Mauritius, Mayotte, Morocco, New Caledonia, Niger, Reunion, Senegal, Seychelles, Togo, Tunisia, Vanuatu, and Wallis & Futuna;** 3) "the laws of Finland" in **Estonia, Latvia, and Lithuania;** 4) "the laws of England" in **Angola, Bahrain, Botswana, Burundi, Egypt, Eritrea, Ethiopia, Ghana, Jordan, Kenya, Kuwait, Liberia, Malawi, Malta, Mozambique, Nigeria, Oman, Pakistan, Qatar, Rwanda, Sao Tome, Saudi Arabia, Sierra Leone, Somalia, Tanzania, Uganda, United Arab Emirates, the United Kingdom, West Bank/Gaza, Yemen, Zambia, and Zimbabwe;** and 5) "the laws of South Africa" in **South Africa, Namibia, Lesotho and Swaziland.**

Jurisdiction: *The following exceptions are added to this section:*

1) **In Austria** the choice of jurisdiction for all disputes arising out of this Statement of Limited Warranty and relating thereto, including its existence, will be the competent court of law in Vienna, Austria (Inner-City); 2) **in Angola, Bahrain, Botswana, Burundi, Egypt, Eritrea, Ethiopia, Ghana, Jordan, Kenya, Kuwait, Liberia, Malawi, Malta, Mozambique, Nigeria, Oman, Pakistan, Qatar, Rwanda, Sao Tome, Saudi Arabia, Sierra Leone, Somalia, Tanzania, Uganda, United Arab Emirates, West Bank/Gaza, Yemen, Zambia, and Zimbabwe** all disputes arising out of this Statement of Limited Warranty or related to its execution, including summary proceedings, will be submitted to the exclusive jurisdiction of the English courts; 3) **in Belgium and Luxembourg**, all disputes arising out of this Statement of Limited Warranty or related to its interpretation or its execution, the law, and the courts of the capital city, of the country of your registered office and/or commercial site location only are competent; 4) **in France, Algeria, Benin, Burkina Faso, Cameroon, Cape Verde, Central African Republic, Chad, Comoros, Congo Republic, Djibouti, Democratic Republic of Congo, Equatorial Guinea, French Guiana, French Polynesia, Gabon, Gambia, Guinea, Guinea-Bissau, Ivory Coast, Lebanon, Madagascar, Mali, Mauritania, Mauritius, Mayotte, Morocco, New Caledonia, Niger, Reunion, Senegal, Seychelles, Togo, Tunisia, Vanuatu, and Wallis & Futuna** all disputes arising out of this Statement of Limited Warranty or related to its violation or execution, including summary proceedings, will be settled exclusively by the Commercial Court of Paris; 5) **in Russia**, all disputes arising out of or in relation to the interpretation, the violation, the termination, the nullity of the execution of this Statement of Limited Warranty shall be settled by Arbitration Court of Moscow; 6) **in South Africa, Namibia, Lesotho and Swaziland**, both of us agree to submit all disputes relating to this Statement of Limited Warranty to the jurisdiction of the High Court in Johannesburg; 7) **in Turkey** all disputes arising out of or in connection with this Statement of Limited Warranty shall be resolved by the Istanbul Central (Sultanahmet) Courts and Execution Directorates of Istanbul, the Republic of Turkey; 8) in each of the following specified countries, any legal claim arising out of this Statement of Limited Warranty will be brought before, and settled exclusively by, the competent court of a) Athens for **Greece**, b) Tel Aviv-Jaffa for **Israel**, c) Milan for **Italy**, d) Lisbon for **Portugal**, and e) Madrid for **Spain**; and 9) **in the United Kingdom**, both of us agree to submit all disputes relating to this Statement of Limited Warranty to the jurisdiction of the English courts.

Arbitration: *The following is added under this heading:*

In Albania, Armenia, Azerbaijan, Belarus, Bosnia-Herzegovina, Bulgaria, Croatia, Georgia, Hungary, Kazakhstan, Kyrgyzstan, FYR Macedonia, Moldova, Poland, Romania, Russia, Slovakia, Slovenia, Tajikistan, Turkmenistan, Ukraine, Uzbekistan, and FR Yugoslavia all disputes arising out of this Statement of Limited Warranty or related to its violation, termination or nullity will be finally settled under the Rules of Arbitration and Conciliation of the International Arbitral Center of the Federal Economic Chamber in Vienna (Vienna Rules) by three arbitrators appointed in accordance with these rules. The arbitration will be held in Vienna, Austria, and the official language of the proceedings will be English. The decision of the arbitrators will be final and binding upon both parties. Therefore, pursuant to paragraph 598 (2) of the Austrian Code of Civil Procedure, the parties expressly waive the application of paragraph 595 (1) figure 7 of the Code. IBM may, however, institute proceedings in a competent court in the country of installation.

In Estonia, Latvia and Lithuania all disputes arising in connection with this Statement of Limited Warranty will be finally settled in arbitration that will be held in Helsinki, Finland in accordance with the arbitration laws of Finland then in effect. Each party will appoint one arbitrator. The arbitrators will then jointly appoint the chairman. If arbitrators cannot agree on the chairman, then the Central Chamber of Commerce in Helsinki will appoint the chairman.

EUROPEAN UNION (EU)

THE FOLLOWING TERMS APPLY TO ALL EU COUNTRIES:

Consumers have legal rights under applicable national legislation governing the sale of consumer goods. Such rights are not affected by the warranties provided in this Statement of Limited Warranty.

How to Obtain Warranty Service: *The following is added to this section:*

To obtain warranty service from IBM in EU countries, see the telephone listing in Part 3 - Warranty Information.

You may contact IBM at the following address:

IBM Warranty & Service Quality Dept.

PO Box 30

Spango Valley

Greenock

Scotland PA 16 OAH

AUSTRIA, DENMARK, FINLAND, GREECE, ITALY, NETHERLANDS, PORTUGAL, SPAIN, SWEDEN AND SWITZERLAND

Limitation of Liability: *The following replaces the terms of this section in its entirety:*

Except as otherwise provided by mandatory law:

1. IBM's liability for any damages and losses that may arise as a consequence of the fulfillment of its obligations under or in connection with this Statement of Limited Warranty or due to any other cause related to this Statement of Limited Warranty is limited to the compensation of only those damages and losses proved and actually arising as an immediate and direct consequence of the non-fulfillment of such obligations (if IBM is at fault) or of such cause, for a maximum amount equal to the charges you paid for the Machine. For purposes of this item, the term "Machine" includes Machine Code and Licensed Internal Code ("LIC").

The above limitation shall not apply to damages for bodily injuries (including death) and damages to real property and tangible personal property for which IBM is legally liable.

2. **UNDER NO CIRCUMSTANCES IS IBM, ITS SUPPLIERS OR RESELLERS LIABLE FOR ANY OF THE FOLLOWING, EVEN IF INFORMED OF THEIR**

POSSIBILITY: 1) LOSS OF, OR DAMAGE TO, DATA; 2) INCIDENTAL OR INDIRECT DAMAGES, OR FOR ANY ECONOMIC CONSEQUENTIAL DAMAGES; 3) LOST PROFITS, EVEN IF THEY ARISE AS AN IMMEDIATE CONSEQUENCE OF THE EVENT THAT GENERATED THE DAMAGES; OR 4) LOSS OF BUSINESS, REVENUE, GOODWILL, OR ANTICIPATED SAVINGS.

FRANCE AND BELGIUM

Limitation of Liability: *The following replaces the terms of this section in its entirety:*

Except as otherwise provided by mandatory law:

1. IBM's liability for any damages and losses that may arise as a consequence of the fulfillment of its obligations under or in connection with this Statement of Limited Warranty is limited to the compensation of only those damages and losses proved and actually arising as an immediate and direct consequence of the non-fulfillment of such obligations (if IBM is at fault), for a maximum amount equal to the charges you paid for the Machine that has caused the damages. For purposes of this item, the term "Machine" includes Machine Code and Licensed Internal Code ("LIC").

The above limitation shall not apply to damages for bodily injuries (including death) and damages to real property and tangible personal property for which IBM is legally liable.

2. **UNDER NO CIRCUMSTANCES IS IBM, ITS SUPPLIERS OR RESELLERS LIABLE FOR ANY OF THE FOLLOWING, EVEN IF INFORMED OF THEIR POSSIBILITY: 1) LOSS OF, OR DAMAGE TO, DATA; 2) INCIDENTAL OR INDIRECT DAMAGES, OR FOR ANY ECONOMIC CONSEQUENTIAL DAMAGES; 3) LOST PROFITS, EVEN IF THEY ARISE AS AN IMMEDIATE CONSEQUENCE OF THE EVENT THAT GENERATED THE DAMAGES; OR 4) LOSS OF BUSINESS, REVENUE, GOODWILL, OR ANTICIPATED SAVINGS.**

THE FOLLOWING TERMS APPLY TO THE COUNTRY SPECIFIED:

AUSTRIA

What this Warranty Covers: *The following replaces the first sentence of the first paragraph of this section:*

The warranty for an IBM Machine covers the functionality of the Machine for its normal use and the Machine's conformity to its Specifications.

The following paragraphs are added to this Section:

The minimum warranty period for Machines is 12 months from the date of delivery. . The limitation period for consumers in action for breach of warranty is the statutory period as a minimum. In case IBM or your reseller is unable to repair an IBM Machine, you can alternatively ask for a partial refund as far as justified by the reduced value of the unrepaired Machine or ask for a cancellation of the respective agreement for such Machine and get your money refunded.

The second paragraph does not apply.

What IBM Will Do to Correct Problems: *The following is added to this section:*

During the warranty period, transportation for delivery of the failing Machine to IBM will be at IBM's expense.

Limitation of Liability: *The following paragraph is added to this section:*

The limitations and exclusions specified in the Statement of Limited Warranty will not apply to damages caused by IBM with fraud or gross negligence and for express warranty.

The following sentence is added to the end of item 2:

IBM's liability under this item is limited to the violation of essential contractual terms in cases of ordinary negligence.

EGYPT

Limitation of Liability: *The following replaces item 2 in this section:*

as to any other actual direct damages, IBM's liability will be limited to the total amount you paid for the Machine that is the subject of the claim. For purposes of this item, the term 『Machine』 includes Machine Code and Licensed Internal Code (LIC).

Applicability of suppliers and resellers (unchanged).

FRANCE

Limitation of Liability: *The following replaces the second sentence of the first paragraph of this section:*

In such instances, regardless of the basis on which you are entitled to claim damages from IBM, IBM is liable for no more than: *(items 1 and 2 unchanged).*

GERMANY

What this Warranty Covers: *The following replaces the first sentence of the first paragraph of this section:*

The warranty for an IBM Machine covers the functionality of the Machine for its normal use and the Machine's conformity to its Specifications.

The following paragraphs are added to this section:

The minimum warranty period for Machines is twelve months. In case IBM or your reseller is unable to repair an IBM Machine, you can alternatively ask for a partial refund as far as justified by the reduced value of the unrepaired Machine or ask for a cancellation of the respective agreement for such Machine and get your money refunded.

The second paragraph does not apply.

What IBM Will Do to Correct Problems: *The following is added to this section:*

During the warranty period, transportation for delivery of the failing Machine to IBM will be at IBM's expense.

Limitation of Liability: *The following paragraph is added to this section:*

The limitations and exclusions specified in the Statement of Limited Warranty will not apply to damages caused by IBM with fraud or gross negligence and for express warranty.

The following sentence is added to the end of item 2:

IBM's liability under this item is limited to the violation of essential contractual terms in cases of ordinary negligence.

HUNGARY

Limitation of Liability: *The following is added at the end of this section:*

The limitation and exclusion specified herein shall not apply to liability for a breach of contract damaging life, physical well-being, or health that has been caused intentionally, by gross negligence, or by a criminal act.

The parties accept the limitations of liability as valid provisions and state that the Section 314.(2) of the Hungarian Civil Code applies as the acquisition price as well as other advantages arising out of the present Statement of Limited Warranty balance this limitation of liability.

IRELAND

What this Warranty Covers: *The following is added to this section:*

Except as expressly provided in these terms and conditions, all statutory conditions, including all warranties implied, but without prejudice to the generality of the foregoing all warranties implied by the Sale of Goods Act 1893 or the Sale of Goods and Supply of Services Act 1980 are hereby excluded.

Limitation of Liability: *The following replaces the terms of this section in its entirety:*

For the purposes of this section, a "Default" means any act, statement, omission, or negligence on the part of IBM in connection with, or in relation to, the subject matter of this Statement of Limited Warranty in respect of which IBM is legally liable to you, whether in contract or tort. A number of Defaults which together result in, or contribute to, substantially the same loss or damage will be treated as one Default occurring on the date of occurrence of the last such Default.

Circumstances may arise where, because of a Default, you are entitled to recover damages from IBM.

This section sets out the extent of IBM's liability and your sole remedy.

1. IBM will accept unlimited liability for death or personal injury caused by the negligence of IBM.
2. Subject always to the Items for Which IBM is Not Liable below, IBM will accept unlimited liability for physical damage to your tangible property resulting from the negligence of IBM.
3. Except as provided in items 1 and 2 above, IBM's entire liability for actual damages for any one Default will not in any event exceed the greater of 1) EUR 125,000, or 2) 125% of the amount you paid for the Machine directly relating to the Default.

Items for Which IBM is Not Liable

Save with respect to any liability referred to in item 1 above, under no circumstances is IBM, its suppliers or resellers liable for any of the following, even if IBM or they were informed of the possibility of such losses:

1. loss of, or damage to, data;
2. special, indirect, or consequential loss; or
3. loss of profits, business, revenue, goodwill, or anticipated savings.

SLOVAKIA

Limitation of Liability: *The following is added to the end of the last paragraph:*

The limitations apply to the extent they are not prohibited under §§ 373-386 of the Slovak Commercial Code.

SOUTH AFRICA, NAMIBIA, BOTSWANA, LESOTHO AND SWAZILAND

Limitation of Liability: *The following is added to this section:*

IBM's entire liability to you for actual damages arising in all situations involving nonperformance by IBM in respect of the subject matter of this Statement of Warranty will be limited to the charge paid by you for the individual Machine that is the subject of your claim from IBM.

UNITED KINGDOM

Limitation of Liability: *The following replaces the terms of this section in its entirety:*

For the purposes of this section, a "Default" means any act, statement, omission, or negligence on the part of IBM in connection with, or in relation to, the subject matter of this Statement of Limited Warranty in respect of which IBM is legally liable to you, whether in contract or tort. A number of Defaults which together result in, or contribute to, substantially the same loss or damage will be treated as one Default.

Circumstances may arise where, because of a Default, you are entitled to recover damages from IBM.

This section sets out the extent of IBM's liability and your sole remedy.

1. IBM will accept unlimited liability for:
 - a. death or personal injury caused by the negligence of IBM; and
 - b. any breach of its obligations implied by Section 12 of the Sale of Goods Act 1979 or Section 2 of the Supply of Goods and Services Act 1982, or any statutory modification or re-enactment of either such Section.
2. IBM will accept unlimited liability, subject always to the Items for Which IBM is Not Liable below, for physical damage to your tangible property resulting from the negligence of IBM.

3. IBM's entire liability for actual damages for any one Default will not in any event, except as provided in items 1 and 2 above, exceed the greater of 1) Pounds Sterling 75,000, or 2) 125% of the total purchase price payable or the charges for the Machine directly relating to the Default.

These limits also apply to IBM's suppliers and resellers. They state the maximum for which IBM and such suppliers and resellers are collectively responsible.

Items for Which IBM is Not Liable

Save with respect to any liability referred to in item 1 above, under no circumstances is IBM or any of its suppliers or resellers liable for any of the following, even if IBM or they were informed of the possibility of such losses:

1. loss of, or damage to, data:
2. special, indirect, or consequential loss; or
3. loss of profits, business, revenue, goodwill, or anticipated savings.

Part 3 - Warranty Information

This Part 3 provides information regarding the warranty applicable to your Machine, including the warranty period and type of warranty service IBM provides.

Warranty Period

The warranty period may vary by country or region and is specified in the table below. NOTE: "Region" means either Hong Kong or Macau Special Administrative Region of China.

IBM 128 MB USB 2.0 High Speed Memory Key

Country or Region of Purchase	Warranty Period	Type of Warranty Service
Worldwide	1 year	1, 4

A warranty period of 1 year on parts and 1 year on labor means that IBM provides warranty service without charge for parts and labor during the 1 year warranty period.

Types of Warranty Service

If required, IBM provides repair or exchange service depending on the type of warranty service specified for your Machine in the above table and as described below. Warranty service may be provided by your reseller if approved by IBM to perform warranty service. Scheduling of service will depend upon the time of your call and is subject to parts availability. Service levels are response time objectives and are not guaranteed. The specified level of warranty service may not be available in all worldwide locations, additional charges may apply outside IBM's normal service area, contact your local IBM representative or your reseller for country and location specific information.

1. Customer Replaceable Unit ("CRU") Service

IBM will ship CRU parts to you for your replacement. If IBM instructs you to return the replaced CRU, you are responsible for returning it to IBM in accordance with IBM's instructions. If you do not return the defective CRU, if IBM so instructs, within 30 days of your receipt of the replacement CRU, IBM may charge you for the replacement.

2. On-site Service

IBM or your reseller will either repair or exchange the failing Machine at your location and verify its operation. You must provide suitable working area to allow disassembly and reassembly of the IBM Machine. The area must be clean, well lit and suitable for the purpose. **For some Machines, certain repairs may require sending the Machine to an IBM service center.**

3. Courier or Depot Service¹

You will disconnect the failing Machine for collection arranged by IBM. IBM will provide you with a shipping container for you to return your Machine to a designated service center. A courier will pick up your Machine and deliver it to the designated service center. Following its repair or exchange, IBM will arrange the return delivery of the Machine to your location. You are responsible for its installation and verification.

4. Customer Carry-In or Mail-In Service

You will deliver or mail as IBM specifies (prepaid unless IBM specifies otherwise) the failing Machine suitably packaged to a location IBM designates. After IBM has repaired or exchanged the Machine, IBM will make it available for your collection or, for Mail-in Service, IBM will return it to you at IBM's expense, unless IBM specifies otherwise. You are responsible for the subsequent installation and verification of the Machine.

The IBM Machine Warranty worldwide web site at http://www.ibm.com/servers/support/machine_warranties/ provides a worldwide overview of IBM's Limited Warranty for Machines, a Glossary of IBM definitions, Frequently Asked Questions (FAQs) and Support by Product (Machine) with links to Product Support pages. **The IBM Statement of Limited Warranty is also available on this site in 29 languages.**

To obtain warranty service contact IBM or your IBM reseller. In Canada or the United States, call 1-800-IBM-SERV (426-7378). For other countries, see the telephone numbers below.

Phone numbers are subject to change without notice. For the latest phone number list, go to <http://www.ibm.com/pc/support> and click **Support Phone List**.

Country or Region	Telephone Number	Country or Region	Telephone Number
Argentina	0800-666-0011	Malaysia	03-7727-7800
Australia	1300-130-426	Mexico	001-866-434-2080
Austria	01-24592-5901	Netherlands	020-514-5770

1. This type of service is called ThinkPad® EasyServ or EasyServ in some countries.

Country or Region	Telephone Number	Country or Region	Telephone Number
Belgium	Dutch 02-210-9820	New Zealand	0800-446-149
	French 02-210-9800		
Bolivia	0800-0189	Norway	66 81 11 00
Brazil	55-11-3889-8986	Peru	0-800-50-866
Canada	1-800-565-3344	Philippines	632-995-2225
	Toronto 416-383-3344		
Chile	800-224-488	Portugal	21-791 51 47
China (PRC)	800-810-1818	Russia	095-940-2000
China (Hong Kong S.A.R.)	852-2825-7799	Singapore	1800-840-9911
Columbia	980-912-3021	Spain	91-662 49 16
Denmark	45 20 82 00	Sweden	08-477 4420
Ecuador	1-800-426911 (option #4)	Switzerland	058-333-09-00
Finland	09-459 69 60	Taiwan	886-2-2725-9799
France	02 38 55 74 50	Thailand	66-2-273-4000
Germany	07032-1549 201	Turkey	00-800-446-32-041
Indonesia	021-523-8535	United Kingdom	0-1475-555 055
Ireland	01-815-9202	United States	1-800-426-7378
Italy	02-7031-6101	Uruguay	000-411-005-6649
Japan	Consumer customers 0120-887-870	Venezuela	0-800-100-2011
	Business customers 0120-887-874		
Luxembourg	298-977 5063	Vietnam	848-8295-160

附錄 C. Notices

IBM may not offer the products, services, or features discussed in this document in all countries. Consult your local IBM representative for information on the products and services currently available in your area. Any reference to an IBM product, program, or service is not intended to state or imply that only that IBM product, program, or service may be used. Any functionally equivalent product, program, or service that does not infringe any IBM intellectual property right may be used instead. However, it is the user's responsibility to evaluate and verify the operation of any non-IBM product, program, or service.

IBM may have patents or pending patent applications covering subject matter described in this document. The furnishing of this document does not give you any license to these patents. You can send license inquiries, in writing, to:

*IBM Director of Licensing
IBM Corporation
North Castle Drive
Armonk, NY 10504-1785
U.S.A.*

INTERNATIONAL BUSINESS MACHINES CORPORATION PROVIDES THIS PUBLICATION 『AS IS』 WITHOUT WARRANTY OF ANY KIND, EITHER EXPRESS OR IMPLIED, INCLUDING, BUT NOT LIMITED TO, THE IMPLIED WARRANTIES OF NON-INFRINGEMENT, MERCHANTABILITY OR FITNESS FOR A PARTICULAR PURPOSE. Some jurisdictions do not allow disclaimer of express or implied warranties in certain transactions, therefore, this statement may not apply to you.

This information could include technical inaccuracies or typographical errors. Changes are periodically made to the information herein; these changes will be incorporated in new editions of the publication. IBM may make improvements and/or changes in the product(s) and/or the program(s) described in this publication at any time without notice.

The products described in this document are not intended for use in implantation or other life support applications where malfunction may result in injury or death to persons. The information contained in this document does not affect or change IBM product specifications or warranties. Nothing in this document shall operate as an express or implied license or indemnity under the intellectual property rights of IBM or third parties. All information contained in this document was obtained in specific environments and is presented as an illustration. The result obtained in other operating environments may vary.

IBM may use or distribute any of the information you supply in any way it believes appropriate without incurring any obligation to you.

Any references in this publication to non-IBM Web sites are provided for convenience only and do not in any manner serve as an endorsement of those Web sites. The materials at those Web sites are not part of the materials for this IBM product, and use of those Web sites is at your own risk.

Any performance data contained herein was determined in a controlled environment. Therefore, the result obtained in other operating environments may vary significantly. Some measurements may have been made on development-level systems and there is no guarantee that these measurements will be the same on generally available systems. Furthermore, some measurements may have been estimated through extrapolation. Actual results may vary. Users of this document should verify the applicable data for their specific environment.

Trademarks

The following terms are trademarks of International Business Machines Corporation in the United States, other countries, or both:

IBM
IBM logo
ThinkPad

Microsoft, Windows, and Windows NT are trademarks of Microsoft Corporation in the United States, other countries, or both.

Pentium is a trademark of Intel Corporation in the United States, other countries, or both.

Other company, product, or service names may be trademarks or service marks of others.

Federal Communications Commission (FCC) statement

Note: This equipment has been tested and found to comply with the limits for a Class B digital device, pursuant to Part 15 of the FCC Rules. These limits are designed to provide reasonable protection against harmful interference in a residential installation. This equipment generates, uses, and can radiate radio frequency energy and, if not installed and used in accordance with the instructions, may cause harmful interference to radio communications. However, there is no guarantee that interference will not occur in a particular installation. If this equipment does cause harmful interference to radio or television reception, which can be determined by turning the equipment off and on, the user is encouraged to try to correct the interference by one or more of the following measures:

- Reorient or relocate the receiving antenna.
- Increase the separation between the equipment and receiver.
- Connect the equipment into an outlet on a circuit different from that to which the receiver is connected.
- Consult an IBM authorized dealer or service representative for help.

Properly shielded and grounded cables and connectors must be used in order to meet FCC emission limits. Proper cables and connectors are available from IBM authorized dealers. IBM is not responsible for any radio or television interference caused by using other than recommended cables and connectors or by unauthorized changes or modifications to this equipment. Unauthorized changes or modifications could void the user's authority to operate the equipment.

This device complies with Part 15 of the FCC Rules. Operation is subject to the following two conditions: (1) this device may not cause harmful interference, and (2) this device must accept any interference received, including interference that may cause undesired operation.

Responsible party:

International Business Machines Corporation
New Orchard Road
Armonk, NY 10504
Telephone: 1-919-543-2193



Tested To Comply
With FCC Standards

FOR HOME OR OFFICE USE

Industry Canada Class B emission compliance statement

This Class B digital apparatus complies with Canadian ICES-003.

Avis de conformite a la reglementation d'Industrie Canada

Cet appareil numérique de la classe B est conforme à la norme NMB-003 du Canada.

Deutsche EMV-Direktive (electromagnetische Verträglichkeit)

Zulassungsbeseinigunglaut dem Deutschen Gesetz über die elektromagnetische Verträglichkeit von Geräten (EMVG) vom 30. August 1995 (bzw. der EMC EG Richtlinie 89/336):

Dieses Gerät ist berechtigt in Übereinstimmungmit dem Deutschen EMVG das EG-Konformitätszeichen - CE - zu führen. Verantwortlich für die Konformitätserklärung nach Paragraph 5 des EMVG ist die:

IBM Deutschland Informationssysteme GmbH, 70548 Stuttgart.

Informationen in Hinsicht EMVG Paragraph 3 Abs. (2) 2:

Das Gerät erfüllt die Schutzanforderungen nach EN 55024:1998 und EN 55022:1998 Klasse B.
--

EN 55022 Hinweis:

『Wird dieses Gerät in einer industriellen Umgebung betrieben (wie in EN 55022:B festgelegt), dann kann es dabei eventuell gestört werden. In solch einem FA11 ist der Abstand bzw. die Abschirmungzu der industriellen Störquelle zu vergrößern.』

Anmerkung:

Um die Einhaltung des EMVG sicherzustellen sind die Geräte, wie in den IBM Handbüchern angegeben, zu installieren und zu betreiben.

European Union - emission directive

This product is in conformity with the protection requirements of EU Council Directive 89/336/ECC on the approximation of the laws of the Member States relating to electromagnetic compatibility.

IBM can not accept responsibility for any failure to satisfy the protection requirements resulting from a non-recommended modification of the product, including the fitting of non-IBM option cards.

This product has been tested and found to comply with the limits for Class B Information Technology Equipment according to European Standard EN 55022. The limits for Class B equipment were derived for typical residential environments to provide reasonable protection against interference with licensed communication devices.

Union Européenne - Directive Conformité électromagnétique

Ce produit est conforme aux exigences de protection de la Directive 89/336/EEC du Conseil de l'UE sur le rapprochement des lois des États membres en matière de compatibilité électromagnétique.

IBM ne peut accepter aucune responsabilité pour le manquement aux exigences de protection résultant d'une modification non recommandée du produit, y compris l'installation de cartes autres que les cartes IBM.

Ce produit a été testé et il satisfait les conditions de l'équipement informatique de Classe B en vertu de Standard européen EN 55022. Les conditions pour l'équipement de Classe B ont été définies en fonction d'un contexte résidentiel ordinaire afin de fournir une protection raisonnable contre l'interférence d'appareils de communication autorisés.

Unione Europea - Directiva EMC (Conformidad electromagnética)

Este producto satisface los requisitos de protección del Consejo de la UE, Directiva 89/336/CEE en lo que a la legislatura de los Estados Miembros sobre compatibilidad electromagnética se refiere.

IBM no puede aceptar responsabilidad alguna si este producto deja de satisfacer dichos requisitos de protección como resultado de una modificación no recomendada del producto, incluyendo el ajuste de tarjetas de opción que no sean IBM.

Este producto ha sido probado y satisface los límites para Equipos Informáticos Clase B de conformidad con el Estándar Europeo EN 55022. Los límites para los equipos de Clase B se han establecido para entornos residenciales típicos a fin de proporcionar una protección razonable contra las interferencias con dispositivos de comunicación licenciados.

Unione Europea - Normativa EMC

Questo prodotto è conforme alle normative di protezione ai sensi della Direttiva del Consiglio dell'Unione Europea 89/336/CEE sull'armonizzazione legislativa degli stati membri in materia di compatibilità elettromagnetica.

IBM non accetta responsabilità alcuna per la mancata conformità alle normative di protezione dovuta a modifiche non consigliate al prodotto, compresa l'installazione di schede e componenti di marca diversa da IBM.

Le prove effettuate sul presente prodotto hanno accertato che esso rientra nei limiti stabiliti per le apparecchiature di informatica Classe B ai sensi della Norma Europea EN 55022. I limiti delle apparecchiature della Classe B sono stati stabiliti al fine di fornire ragionevole protezione da interferenze mediante dispositivi di comunicazione in concessione in ambienti residenziali tipici.

이 기기는 가정용으로 전자파 적합등록을 한 기기로서
주거지역에서는 물론 모든 지역에서 사용할 수 있습니다.

この装置は、情報処理装置等電波障害自主規制協議会（VCCI）の基準に基づきクラスB情報技術装置です。この装置は、家庭環境で使用することを目的としていますが、この装置がラジオやテレビジョン受信機に近接して使用されると、受信障害を引き起こすことがあります。
取扱説明書に従って正しい取り扱いをして下さい。

Japanese statement of compliance for products less than or equal to 20 A per phase

高調波ガイドライン適合品



Part Number: 22P9237

Printed in China

(1P) P/N: 22P9237

