

# **Director Agent Upward Integration with Unicenter NSM**

**Version 1.0**

## IMPORTANT NOTICE

**NO WARRANTY.** ALTHOUGH NETCOM SYSTEMS INC. HAS ATTEMPTED TO ENSURE THE ACCURACY OF THE CONTENTS OF THIS MANUAL, THIS MANUAL MAY CONTAIN ERRORS OR OMISSIONS. THIS MANUAL, INCLUDING WITHOUT LIMITATION THE SOFTWARE PROGRAM EXAMPLES CONTAINED HEREIN, IS SUPPLIED "AS-IS," WITHOUT WARRANTY OF ANY KIND, EITHER EXPRESSED OR IMPLIED, INCLUDING THE IMPLIED WARRANTIES OF MERCHANTABILITY AND FITNESS FOR A PARTICULAR PURPOSE.

**LIMITED LIABILITY.** IN NO EVENT SHALL NETCOM BE LIABLE FOR ANY INDIRECT, SPECIAL, INCIDENTAL OR CONSEQUENTIAL DAMAGES (INCLUDING DAMAGES FOR LOSS OF BUSINESS, PROFITS OR THE LIKE) EVEN IF NETCOM OR ITS REPRESENTATIVES HAVE BEEN ADVISED OF THE POSSIBILITY OF SUCH DAMAGES.

Published: Feb 2002

Copyright © 2002 NetCom Systems Inc.

200, Metroplex Drive (3<sup>rd</sup> Floor)

Edison, NJ 08817

All

rights

reserved.

## PROPRIETARY AND CONFIDENTIAL INFORMATION

THIS MATERIAL CONTAINS PART OF A COMPUTER SOFTWARE PROGRAM WHICH IS, PROPRIETARY AND CONFIDENTIAL INFORMATION OWNED BY NetCom Systems Inc. THE PROGRAM, INCLUDING THIS MATERIAL, MAY NOT BE DUPLICATED, DISCLOSED OR REPRODUCED IN WHOLE OR IN PART FOR ANY PURPOSE WITHOUT THE EXPRESS WRITTEN AUTHORIZATION OF NetCom Systems Inc.. ALL AUTHORIZED REPRODUCTIONS MUST BE MARKED WITH THIS LEGEND.

**All brand names appearing in this manual are the trademarks of their respective holders.**

## **TABLE OF CONTENTS**

- 1.0 Components & System requirements**
- 2.0 How Can I Set Up Director Agent Upward Integration**
- 3.0 Uninstallation**
- 4.0 TNG map visualization**

## **1.0 Components and System Requirements**

This section explains the minimum system requirements for and describes functionality of the different components of the System. This is meant to help you understand the architecture and how to set up a proper working system.

### **Distributed State Machine (DSM) Component**

The DSM component discovers the Director Agents. The DSM polls the agents and monitors the same.

### **World View (WV) component**

The WV component creates a Business Process View for Director Agents. All the nodes monitored by the DSM in the network with the Director Agents are included in the Business Process view.

### **Asset Management Option Component**

The Asset Management Option component integrates Director Agents with the AMO Agent of Unicenter NSM. If this option is installed, AMO agent detects Director Agents as an asset and will add the same in its AMO Agent database.

Following are minimum system requirements.

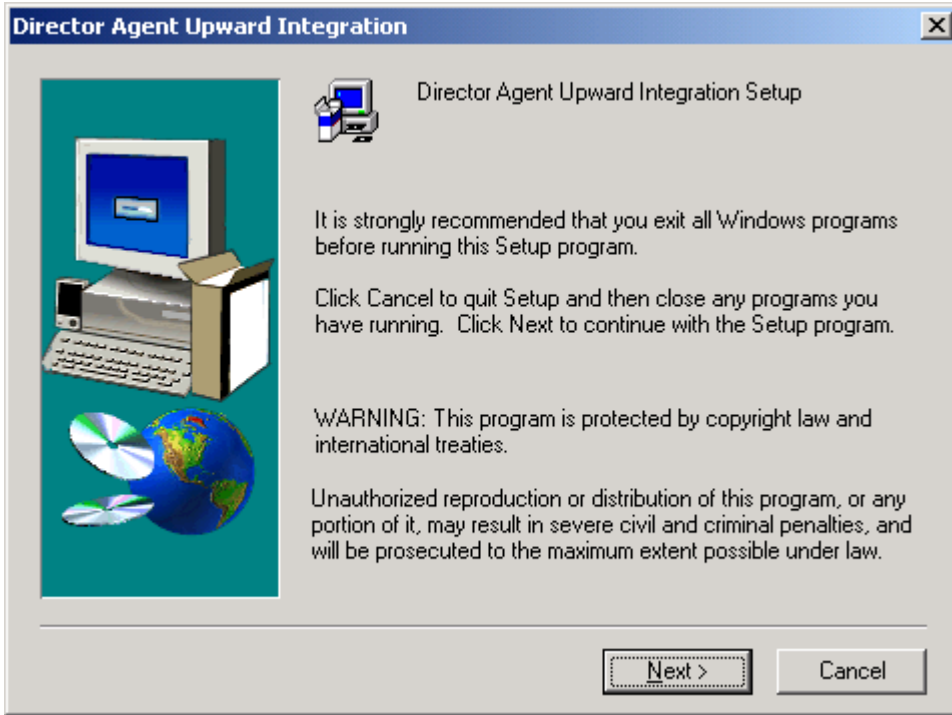
Unicenter NSM Distributed State Machine, WorldView Interface (2D & 3D Maps) & Event Management on Windows NT 4.0 or Windows 2000 Server running MS SQL 7.0/ 2000 as database.

## 2.0 How Can I Set Director Agent Upward Integration with TNG?

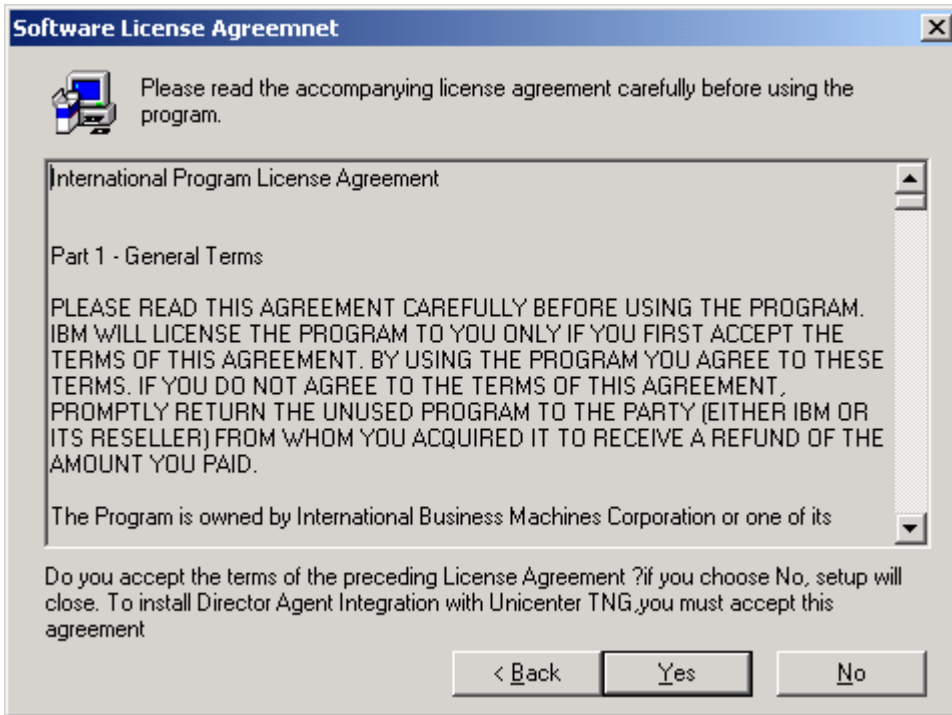
In order to launch the Setup program, you must have access to a CD-ROM drive, either locally installed or via the network. To install on a local hard disk or shared network drive, proceed as follows:

1. Start Windows, and close all open applications.
2. Insert the CD-ROM in the appropriate drive.
3. In the Windows Program Manager, choose Run from the Start menu.
4. In the Command Line box, type the letter of the drive containing the CD-ROM, a colon, a backslash, and the filename SETUP.EXE
5. Example: **E:\setup.exe**
6. Choose OK.

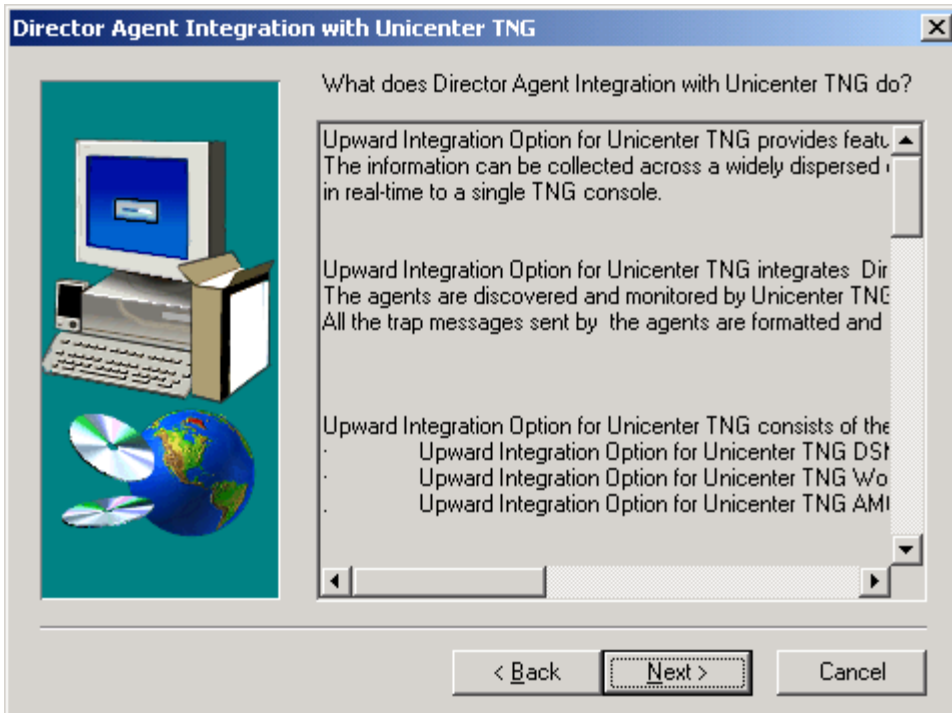
This will start the System Setup and open the main Setup screen, which is shown in the figure below.



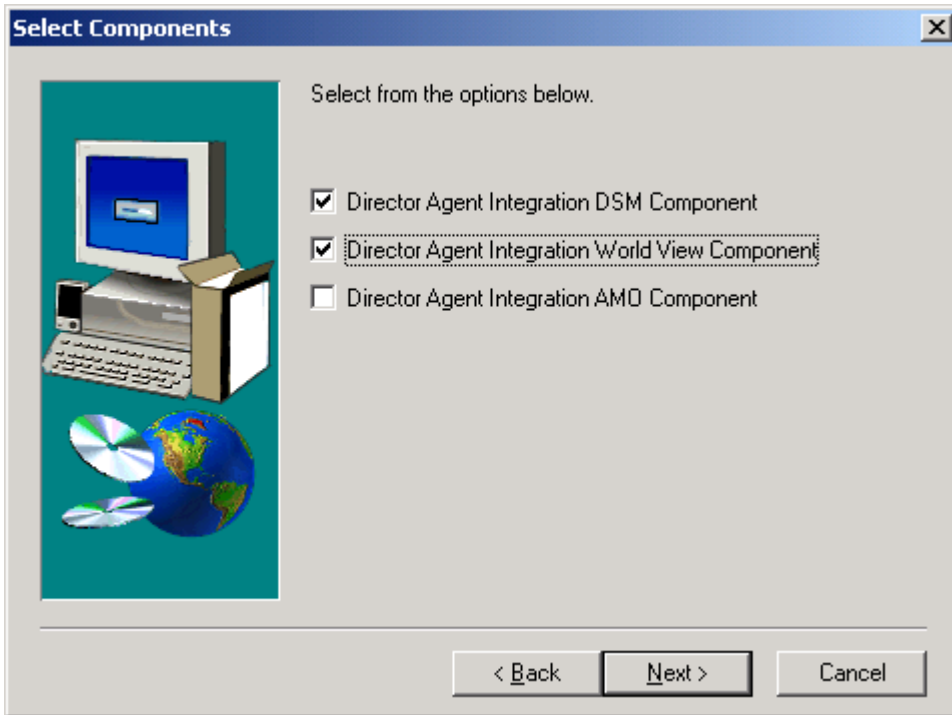
Insert Director Agent Upward Integration with TNG CD, Click setup.exe and you'll be presented with screen shown above.



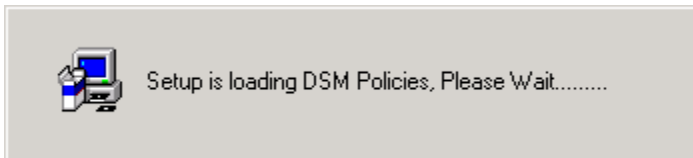
Click Yes to accept the license agreement.



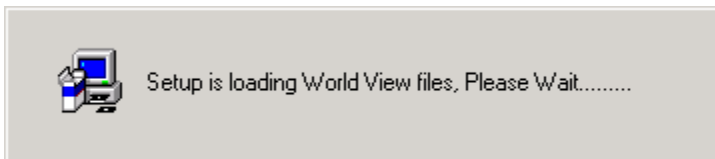
This Screen represents the overview of what the product does.



Please select all the components you want to install.

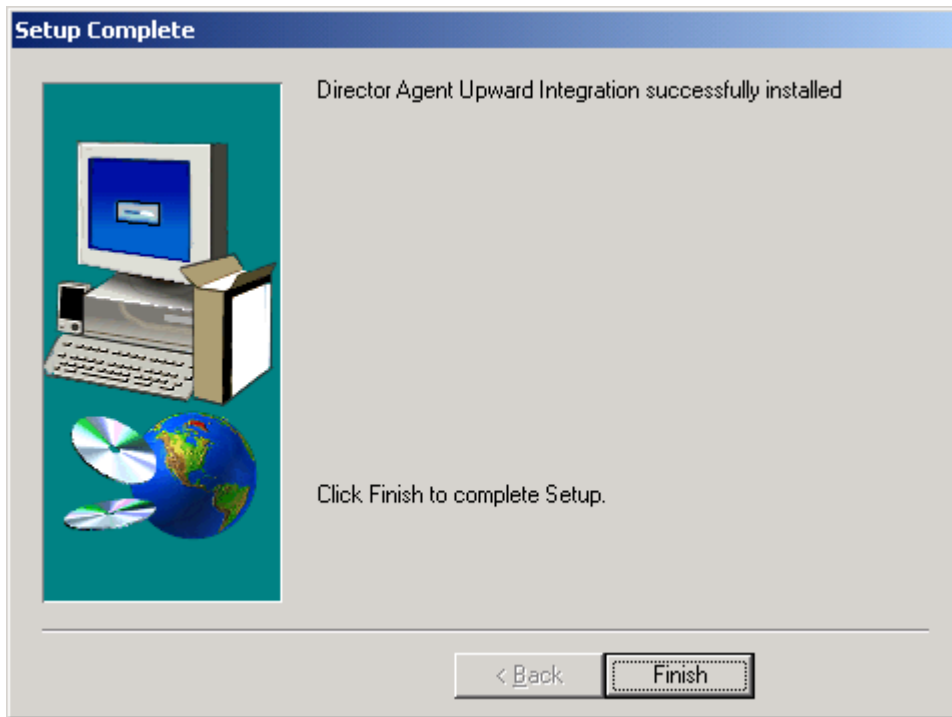


DSM Policies related to Director Agent are being loaded



World View files that create classes are being loaded.

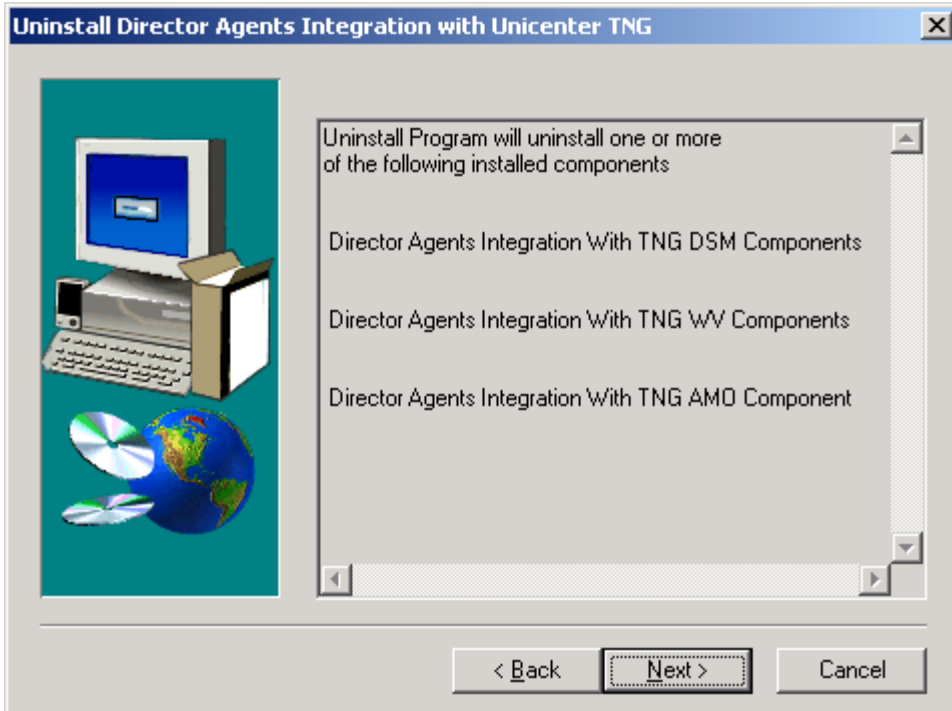




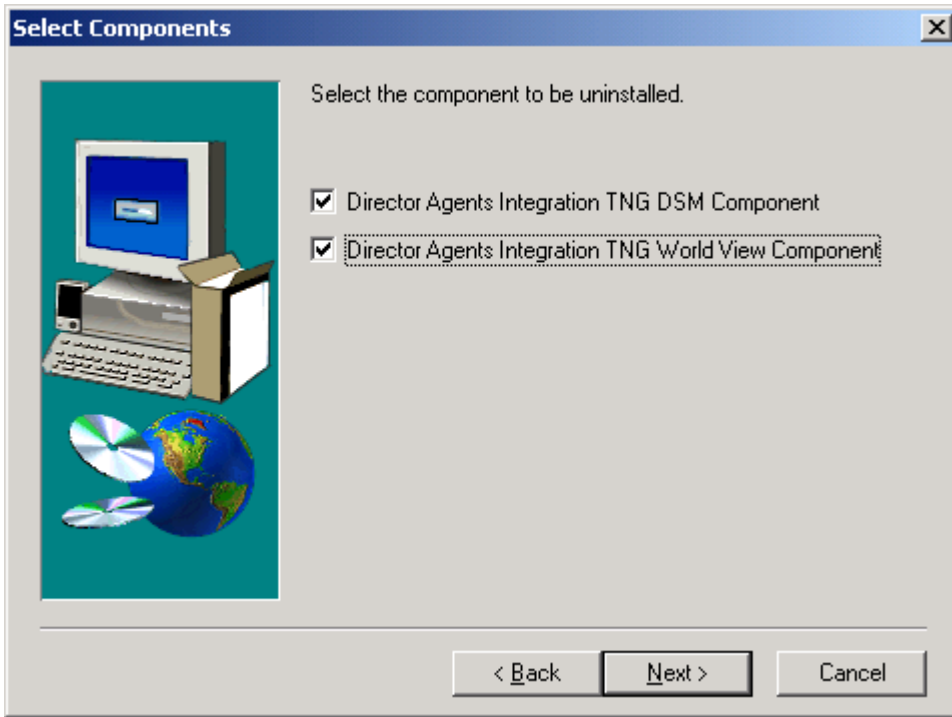
Press Finish to complete the installation.

After the install completes you should run `resetdsm` in order to load the new policy files. If you run `resetdsm` without the `skipwv` option than you should run `ldclassdef.bat` prior to `resetdsm`.

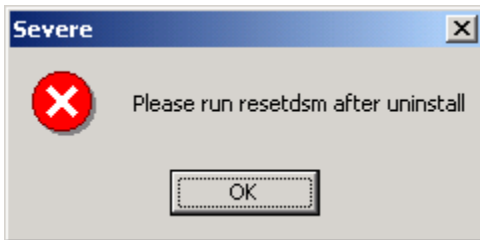
### 3.0 UNINSTALLATION



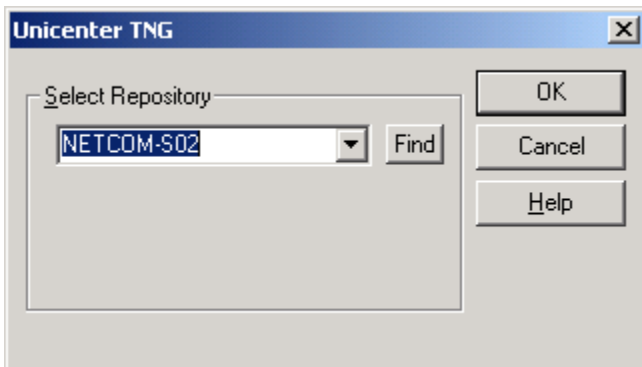
Uninstall Program will remove all the components related to Director Agents.



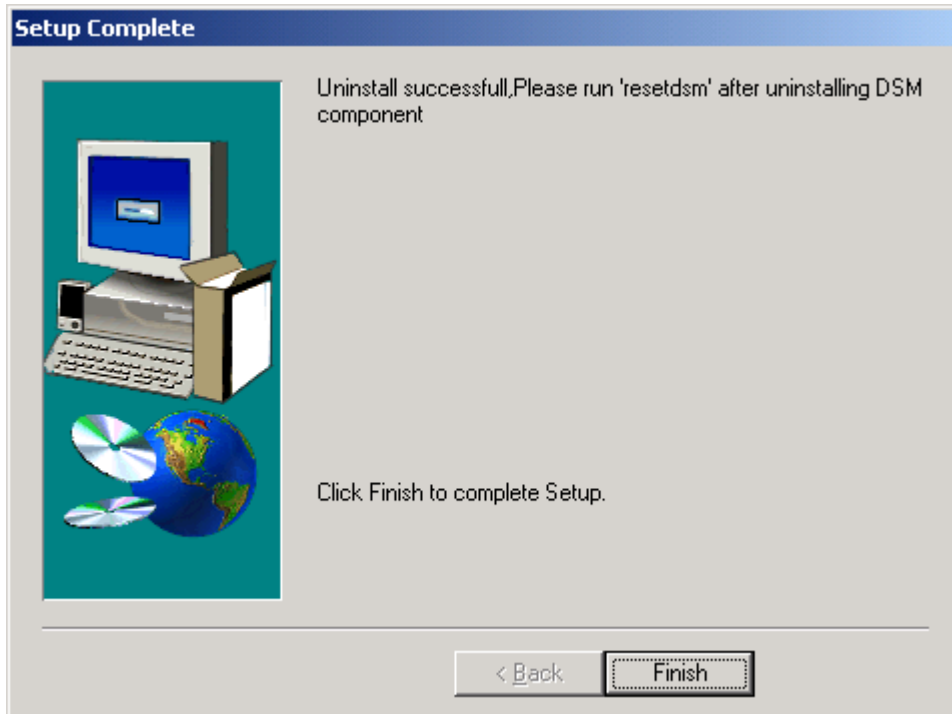
Here you can have a choice whether to uninstall all the components or selected one.



After the uninstall completes you should run resetdsm in order to load the new policy files. If you run resetdsm without the skipwv option than you should run ldclassdef.bat prior to resetdsm.

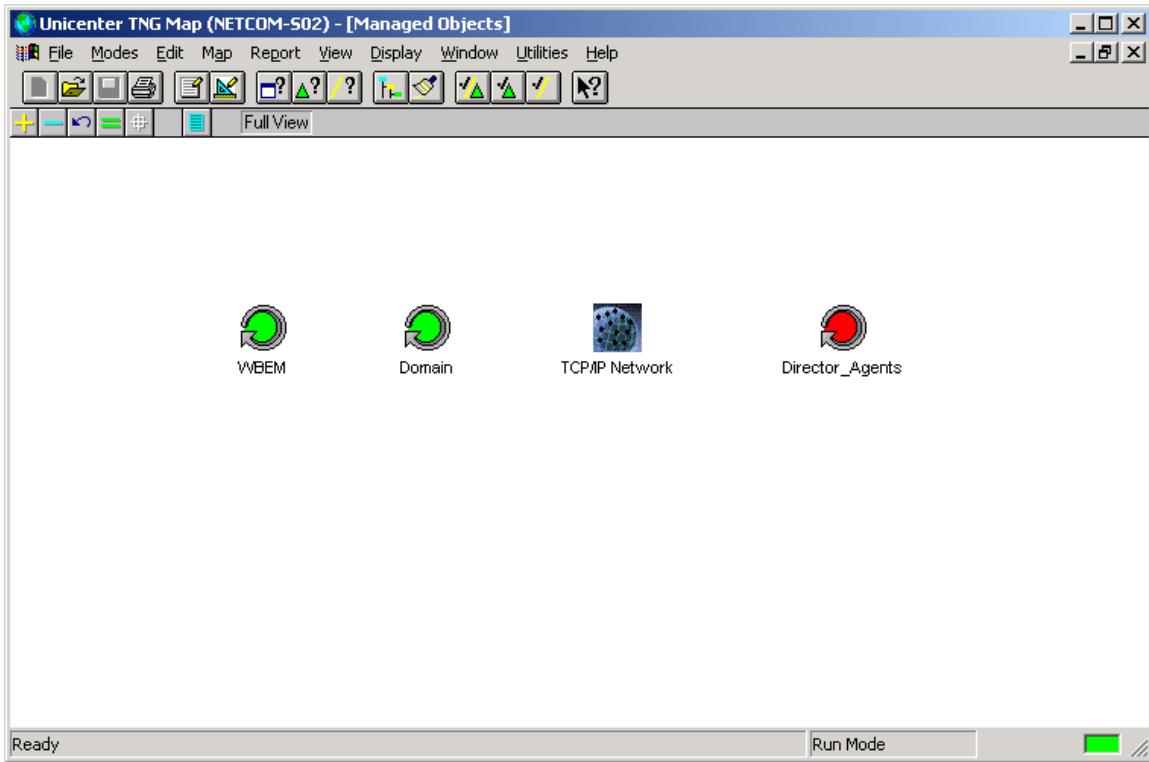


Select the Repository here. In our case NETCOM-S02.



Click finish to complete the uninstall.

## 4.0 TNG MAP VISUALIZATION



Director\_Agents BPV is created for immediate attention from the system administrator.

