

IBM



IBM Director

Quick Beginnings



IBM Director
Quick Beginnings

First Edition (January 2001)

INTERNATIONAL BUSINESS MACHINES CORPORATION PROVIDES THIS PUBLICATION "AS IS" WITHOUT WARRANTY OF ANY KIND, EITHER EXPRESS OR IMPLIED, INCLUDING, BUT NOT LIMITED TO, THE IMPLIED WARRANTIES OF MERCHANTABILITY OR FITNESS FOR A PARTICULAR PURPOSE. Some jurisdictions do not allow disclaimer of express or implied warranties in certain transactions, therefore, this statement may not apply to you.

This publication could include technical inaccuracies or typographical errors. Changes are periodically made to the information herein; these changes will be incorporated in new editions of the publication. IBM may make improvements and/or changes in the product(s) and/or the program(s) described in this publication at any time. This publication was developed for products and services offered in the United States of America and the United Kingdom. It is possible that this publication may contain references to, or information about, IBM products (machines and programs), programming, or services that are not announced in your country. Such references or information must not be construed to mean that IBM intends to announce such IBM products, programming, or services in your country.

Requests for technical information about IBM products should be made to your IBM reseller or IBM marketing representative. No part of this publication may be reproduced or distributed in any form or by any means without prior permission in writing from the International Business Machines Corporation.

©Copyright International Business Machines Corporation 1999, 2001. All rights reserved.

Note to U.S. Government Users—Documentation related to restricted rights—Use, duplication or disclosure is subject to restrictions set forth in GSA ADP Schedule Contract with IBM Corporation.

Trademarks

Alert on LAN, IBM, IntelliStation, Netfinity, Netfinity Manager, Netfinity Director, IBM Director, ThinkPad, and Wake on LAN are trademarks of IBM Corporation.

Microsoft, Windows, Windows NT, WIN32, and the Windows logo are trademarks or registered trademarks of Microsoft Corporation.

Java and all Java-based trademarks or logos are trademarks of Sun Microsystems, Inc.

Intel, Pentium, and LANDesk are trademarks of Intel Corporation in the United States and other countries.

Other company, product, and service names mentioned in this document may be trademarks or servicemarks of others.

Notices

References in this publication to IBM products, programs, or services do not imply that IBM intends to make these available in all countries in which IBM operates. Any reference to an IBM product, program, or service is not intended to state or imply that only that IBM product, program, or service may be used. Subject to IBM's valid intellectual property or other legally protectable rights, any functionally equivalent product, program, or service may be used instead of the IBM product, program, or service. The evaluation and verification of operation in conjunction with other products, except those expressly designated by IBM, are the responsibility of the user.

IBM may have patents or pending patent applications covering subject matter in this document. The furnishing of this document does not give you any license to these patents. You can send license inquiries, in writing, to:

IBM Director of Licensing
IBM Corporation
N. Castle Drive
Armonk, NY 10504-1785
U.S.A.

Licensees of this program who wish to have information about it for the purpose of enabling: (1) the exchange of information between independently created programs and other programs (including this one) and (ii) the mutual use of the information which has been exchanged, should contact IBM Corporation, Department 80D, P.O. Box 12195, 3039 Cornwallis, Research Triangle Park, NC 27709, U.S.A. Such information may be available, subject to appropriate terms and conditions, including in some cases, payment of a fee.

Contents

1. Quick Beginnings for IBM Director 1

Before You Begin	1
Supported Systems by Component	1
Hardware Requirements	2
Workgroup/Enterprise Integration	3
Installing IBM Director 2.2 Instructions.....	3
Installing IBM Director Server	5
Installing the IBM Director Console.....	14
Installing the UM Services Client for IBM Director	14
Supported Operating Systems	15
Hardware Requirements	16
Installing the Windows UM Services Client.....	16
Using the UM Services Client Attended Installation for OS/2	20
Using the UM Services Client Unattended Installation for OS/2	23
Installing the UM Services Client for NetWare	23
Installing UM Services Client for SCO UnixWare	24
Installing UM Services Client for Linux Red Hat.....	25
Starting IBM Director	26
Uninstalling IBM Director	26

A. Upgrading to IBM Director 2.2 29

Upgrading the IBM Director Server	29
Upgrading the IBM Director Console.....	31
Upgrading the IBM Director Client.....	32

Index 35

Quick Beginnings for IBM Director

Quick Beginnings for IBM Director will step you through the installation process for installing IBM Director Management Server, Console and UM Services Client on supported operating systems.

Before You Begin

Before you install UM Services on your client or server, consider the following:

- Supported Systems by Component
- Hardware Requirements
- Workgroup/Enterprise Integration

Supported Systems by Component

The IBM Director Management Server, which installs all IBM Director components, is supported on the following operating systems:

- Windows 2000—Server or Advanced Server
- Windows NT Server 4.0 (with Service Pack 4 or later)

The IBM Director Console component supports the same operating systems as IBM Director Management Server, including:

- Windows 2000 Professional

-
- Windows NT Workstation 4 (with Service Pack 4 or later)
 - Windows 98
 - Windows 95 (with OEM Service Release 2 (OSR2) or later)

The UM Services Client component is supported on the following Windows operating systems:

- Windows 2000—Server or Advanced Server
- Windows 2000 Professional
- Windows NT Server 4.0 (with Service Pack 4 or later)
- Windows NT Workstation 4 (with Service Pack 4 or later)
- Windows 98
- Windows 95 (with OEM Service Release 2 (OSR2) or later)
- Windows ME

Note: The UM Services Client component is installed directly on supported Microsoft operating systems through the main installation program. UM Services Client is also supported on other operating systems through a direct installation from each supported system directory on the CD. See “Installing the UM Services Client for IBM Director” on page 14.

Hardware Requirements

IBM Director Management Server and Console require the following hardware, memory, and disk space:

- Pentium II class processor, 300 MHz or faster
- 64 MB of random access memory (RAM)

Note: This memory requirement is for the operational capabilities of IBM Director only. Operating systems such as Windows 2000 Advanced Server have a higher memory requirement for installation and operation.

- 150 MB of virtual storage
- 85 MB of free disk space

-
- A network adapter that supports the TCP/IP protocol. The adapter must support also NetBIOS, IPX, or SNA, depending on which transport is needed to communicate with the managed systems.

The UM Services Client for IBM Director in a Windows operating system requires the hardware, memory, and disk space:

- An IBM Netfinity server or @server, IBM Desktop, IBM IntelliStation computer, or IBM ThinkPad mobile computer.
Note: Client systems must support SMBIOS version 2.0 or higher.
- An Intel Pentium 200 MHz or faster processor.
- 75 MB of hard disk space on the client systems.
- A minimum of 32 MB RAM.

Workgroup/Enterprise Integration

IBM Director installation allows you to install UM Services as an integrated systems-management solution for a supported systems-management console application. Detailed information about the appropriate environments for integration can be found in the *UM Services Installation and User's Guide*, included on the *IBM Director with UM Server Extensions* CD.

Installing IBM Director 2.2 Instructions

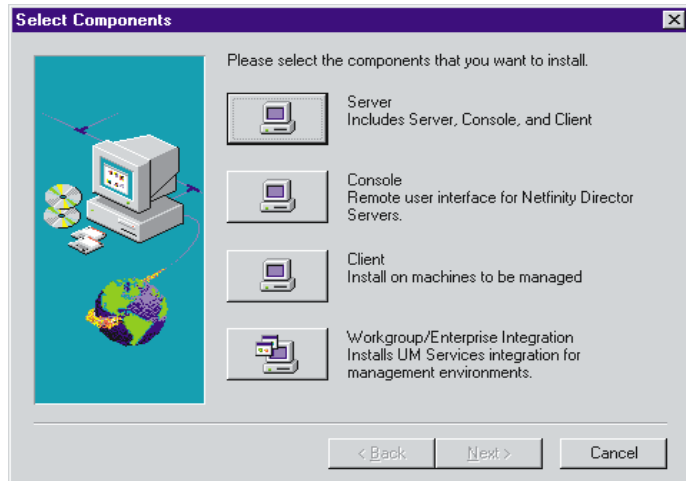
Notes:

- Pressing **Cancel** on the database configuration dialogs only cancels the database configuration process, not the installation process.
- Pressing **Cancel** during an upgrade, either while files are being copied or after they are copied **will** corrupt the currently-installed copy.
- Selecting the close window button (the **X** in the upper right-hand corner of the dialog) does not always have the same results as pressing the **Cancel** button. For example, selecting the close window button during the database configuration process

cancel the entire installation (not just the database configuration process).

Take the following steps to install the IBM Director components (Server, Console, and Client for supported Microsoft Windows operating systems).

1. Place the *IBM Director with UM Server Extensions* CD in the CD-ROM drive of the machine to which you will be installing.
2. The Autostart program will automatically start the IBM Director installation program in a Windows environment. However, if Autostart is disabled, you can initiate installation from the command line.
 - a. Click **Start** → **Run**.
 - b. In the **Open:** field, type
X:\Director\win32\install\Ibmsetup.exe
where *X* is the location of the CD-ROM drive.
3. Click the **Install IBM Director** button. Clicking the Install UM Server Extensions button will start the UM Server Extensions installation application. For more information about this product, refer to the *UM Server Extensions User's Guide* included in the \DOCS directory on this CD.
4. Click through the **Welcome** window and accept the License Agreement.
The **Select Components** window opens.



There are four different installation choices from the **Select Components** window:

Server Install the files for the Server, Console, and Client.

Console Install the remote user interface for IBM Director Servers.

Client Install the Client files on Microsoft operating systems only. For other managed operating system environments, see “Installing the Windows UM Services Client” on page 16.

Workgroup/Enterprise Integration

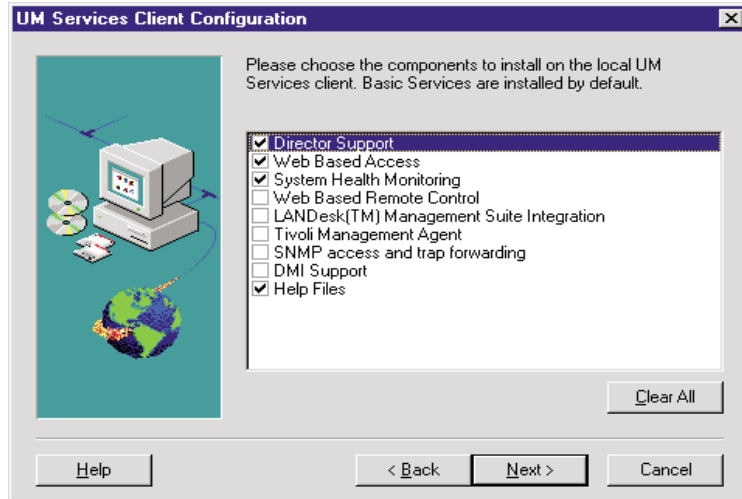
Install UM Services integration for other management environments. See the *UM Services Installation and User’s Guide*, provided on the *IBM Director with UM Server Extensions* CD, for complete information.

Installing IBM Director Server

Selecting **Server** from the **Select Components** window installs the files for the Server, Client, and Console. Take the following steps:

1. Click **Server**.

The **UM Services Client Configuration** window opens.



2. Select the check box beside any of the components that you want to install on the client system.

The following optional components are available. The components that are selected by default are indicated as such:

Director Support (default)

Director Support is an additional configuration option for the client installation only. IBM Director is an advanced Intel processor-based workgroup hardware manager, with centralized client and group management console and server services. Selecting this feature enables the client system to be managed in a Director environment by installing UM Services on this system.

Web Based Access (default)

Web Based Access offers a convenient Java-based tool for managing a client system and for viewing the CIM-based inventory data. If you install Web Based Access, a hypertext transport protocol (HTTP) DAEMON is installed and requires that a user name and password be typed during the installation. The user name and password limit access to the HTTP DAEMON. With Web-Based Access that is installed on the client system, the client

system can be managed from any remote computer with a supported Web browser. The Web browser is the only software that is needed on the remote system.

System Health Monitoring (default)

System Health Monitoring provides active monitoring of critical system functions, such as disk space available, SMART drive alerts, system temperature, fan functionality, power supply voltage, and system cover removal (dependent upon the hardware options of a selected managed system). You can use System Health Monitoring to detect system problems early, before system failures occur. System administrators are notified of a system problem by a CIM event, and SNMP trap (SNMP traps are available only if **SNMP access and trap forwarding** is also selected), or and SMS status message (Microsoft SMS 2.0 only). Critical problems also cause a message to be displayed on the monitor of the client system.

Web Based Remote Control

Web Based Remote Control enables a remote system administrator using a Web browser or MMC console to take control of the client system desktop, enhancing the administrator's ability to diagnose system problems and troubleshoot the system.

Note: You must install the Web Based Access component to install the Web Based Remote Control component.

LANDesk™ Management Suite Integration

LANDesk Management Suite Integration installs the Intel Common Base Agent on the client system. This enables the system administrator to use UM Services with LANDesk Management Suite.

Tivoli Management Agent

Tivoli Management Agent installs support on the client system that enables it to be managed by the Tivoli Enterprise system-management platform.

SNMP Access and trap forwarding (default)

This feature enables CIM information to be accessed from systems that use the simple network management protocol (SNMP). If System Health Monitoring is enabled, this option also enables System Health to forward CIM events as SNMP traps. This component requires that you have the SNMP service (provided with the operating system) installed on the endpoint. If the SNMP service is not installed, the system prompts you to insert the operating system installation media and install SNMP during the UM Services installation.

DMI Support

Selecting this component installs the Desktop Management Interface (DMI) compliant Service Provider. When enabled, this feature maps a managed system CIM data and events to DMI.

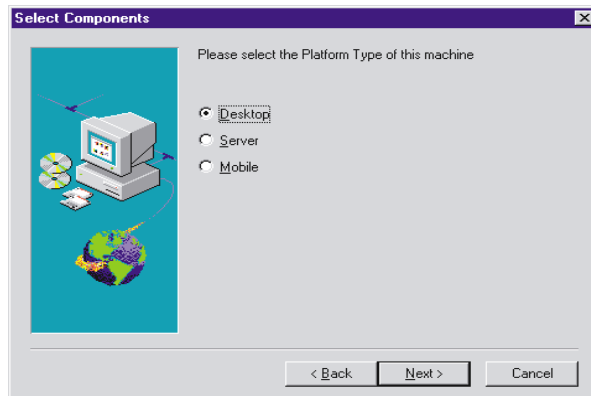
Help Files (default)

Selecting this component installs online documentation. Do not select this option if you are concerned about disk space or do not need online documentation installed on every client system.

3. After you select the components you want to install, click **Next** to continue.

The following steps are dependent on the selections that are made in the UM Services Client Configuration menu.

4. If you selected **DMI Support** from the UM Services Client Configuration menu, the **DMI Platform** window opens.



Select the type of platform you are installing the DMI support to. Click **Next** to continue.

5. If Microsoft IIS is installed, a prompt will ask if you want to use IIS as the UM Services web server. Click **Yes** or **No** according to your preferences.
6. The **Add icons for UM Services** prompt asks if you want to add UM Services icons to the Start menu. Click **Yes** or **No** according to your preferences.
7. The **User ID** window opens. Use this window to set the user ID and password for the client system and to specify the TCP/IP port that is used to access the client.

You must provide a unique user ID and password for the client system. To use the UM Services console to manage this system, you must first provide a valid user ID and password before being allowed access to the system. Type in the **User ID** field the user ID. Then type the password in the **Password** field, and type the password again in the **Confirm Password** field.

Note: The user ID and password are case sensitive.

Then, select a TCP/IP port that is used to access the UM Services console. The default port is 411. If this port is not available, you can select port number 6411, 6500, 6600, or 6611. Make sure that other TCP/IP applications do not use the selected port. Click **Next** to continue.

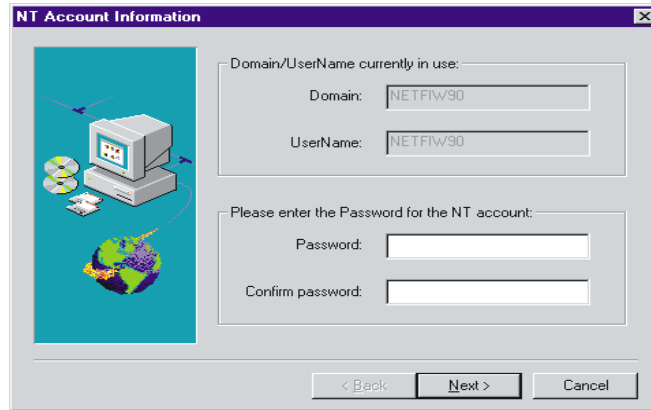
-
8. If you selected **SNMP access and trap forwarding** from the UM Services Client Configuration menu and do not have the SNMP network service installed, IBM Director installation will prompt you with an SNMP installation query.
 - Click **No** to continue with the IBM Director installation without installing the SNMP network service.
 - Click **Yes** to install the SNMP network service on the server. The Installing SNMP window and your Network window opens. Follow the directions for installing SNMP. When the Windows operating system prompts you to restart, click **No**. In the Installing SNMP window, click **Next** to return to the Nefinity Director installation program.
 9. The system asks if you want to add a IBM Director icon to the **Start** menu. Click **Yes** or **No** depending on your preference.

The **Choose Destination Location** window opens for the location of the IBM Director files.
 10. Click **Next** to accept the default directory (**C:\Program Files\Director**), or click **Browse** to choose a different directory.

The **Choose Destination Location** window opens again. This time a directory needs to be specified for a Software Distribution packages creation directory.
 11. Click **Next** to accept the default directory (**C:\Program Files\Director\SwDistPk**), or click **Browse** to choose a different directory.

After creating the Software Distribution packages directory, another **Choose Destination Location** window opens. This directory will be the location for Software Distribution packages that are installed on this system.
 12. Click **Next** to accept the default directory (**C:\Program Files\Director\SwDistPk**), or click **Browse** to choose a different directory.
 13. The system asks you if you want to install files for remote control. Select **Yes** or **No**.

-
14. The system begins installing the necessary files. The **Account Information** window opens.

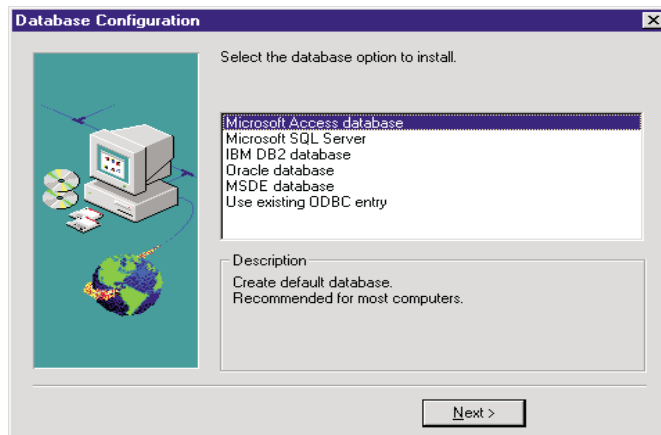


The Domain and User Name for the machine you are using are displayed.

Enter your account password in the **Password** field and enter it again in the **Confirm Password** field.

15. Click **Next** to continue.

The **Director Database Configuration** window opens.



16. Select the appropriate database for the installation.

Microsoft Access database

Selection creates an Access database.

Microsoft SQL Server

Selection creates an MS SQL Server database. A Microsoft SQL Server database must be installed and configured for the network.

IBM DB2 database

Selection creates a DB2 database. DB2 must be installed and configured in the network.

Oracle Selection creates an Oracle database. Oracle must be installed and configured in the network.

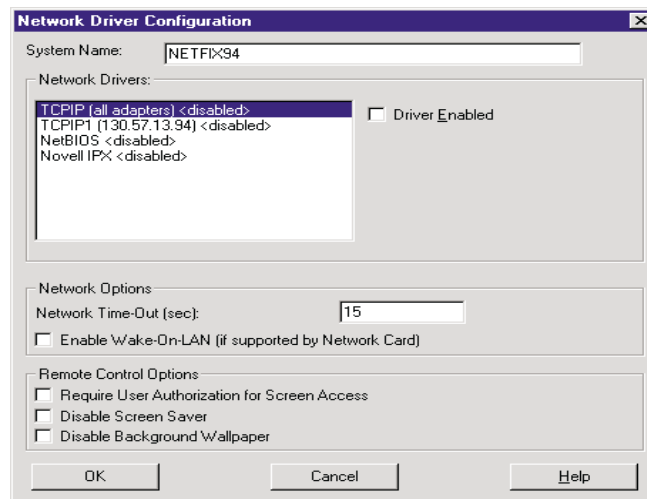
MSDE Microsoft Data Engine (MSDE) database support. MSDE must be installed and configured in the network.

Use existing ODBC entry

Selecting this option displays a list of existing Jet, SQL, and MSDE data sources on the system. You can select one of these to use as your database.

Click **Next** to continue.

17. The **Network Driver Configuration** window opens.



This window defines the network transport options for a IBM Director Server. The options are:

- **System Name** - The name of the IBM Director Server.
- **Network Drivers** - The box lists all network transport protocols defined in the system protocol list. They appear as either enabled or disabled. To enable a network transport for use with IBM Director, click on the driver name and check the **Driver Enabled** box.
- **Network Address (for NetBIOS only)** - This is the NetBIOS network name.
- **Network Time-out (sec)** - 15 seconds is the default time-out.
- **Require User Authorization for Screen Access** - Check this box if you want users to be able to control remote access to their systems.
- **Enable Wake On-LAN** - Check this box if the network card supports Wake On-LAN.

Enable the appropriate network drivers by selecting the driver from the **Network Drivers** list and check the **Driver Enabled** checkbox.

18. You may change the Network Timeout if desired.
19. Select the **Enable Wake On-LAN** checkbox if the server has Wake On-LAN capability.
20. Select the **Require User Authorization for screen Access** checkbox if you want to give client users the authority to deny the system administrator remote control access to their machines. This option allows users to control who accesses their machines.
21. To disable screen saver programs on monitored systems, use the **Disable Screen Saver** option. To minimize system overhead, this option temporarily disables screen saver programs when the server detects active remote control sessions. When the remote control session ends, the previous screen saver is restored on the monitored system.
22. To disable screen wallpaper graphics on monitored systems, use the **Disable Background Wallpaper** option. To minimize system

overhead, this option temporarily disables screen background wallpaper when the server detects active remote control sessions. When the remote control session ends, the previous screen wallpaper is restored on the monitored system.

23. Select **OK** to continue.

When the installation is complete, the **Setup is Complete** window opens.

24. Restart the computer now or Restart later. If you choose **Restart Now**, the system shuts down and restarts immediately. If you choose **Restart Later**, the installation program closes. However, you must restart and log in to the system to begin using IBM Director.

Installing the IBM Director Console

Select the **Console** button from the **Select Components** window to install the Console files only. Take the following steps:

1. Select **Console**.

The **Choose Destination Location** window opens.

2. Click **Next** to accept the default directory (**C:\Program Files\Director**), or click **Browse** to choose a different directory.

The necessary files are installed on the system.

The **Setup is Complete** window opens.

3. Restart the computer now or Restart later. If you choose **Restart Now**, the system shuts down and restarts immediately. If you choose **Restart Later**, the installation program closes. However, you must restart and log in to the system to begin using IBM Director.
4. Click **Finish**.

Installing the UM Services Client for IBM Director

IBM Director, as a highly integrated workgroup hardware manager, allows you to manage a heterogeneous environment through the use of the UM Services Client.

You can install the Client on a Microsoft Windows system as part of the IBM Director installation. For OS/2, Netware, SCO UnixWare and Red Hat systems that are managed by IBM Director, use the *IBM Director with UM Services* CD-ROM directly to install the Client.

Supported Operating Systems

The following operating systems and versions are supported:

- Microsoft ME, Windows 95, Windows 98, Windows NT 4.0 (Workstation or Server), and Windows 2000 Professional and Server
- OS/2 3.0 and 4.0 with Service Pack 5 and Warp Server for eBusiness
- NetWare 4.1 or NetWare 4.11 (with Service Pack 5 or higher), NetWare 5.0 (with Service Pack 1 or higher)
- SCO UnixWare 7.1 (with SCO UnixWare Patch ptf7441a) or SCO UnixWare 7.1.1 with these patches:
 - ptf7045
 - ptf7410
 - ptf7441
 - ptf7601
 - ptf7602
 - ptf7603
 - ptf7608
 - ptf7616
- Linux Red Hat 6.1 and 6.2 with Linux kernel version 2.2 or later. The following libraries must be included:
 - ld-linux.so
 - libc.so
 - libm.so
 - libdl.so
 - libpthread.so

Hardware Requirements

Hardware requirements for Windows operating systems are detailed on page 2. The other operating systems have these requirements:

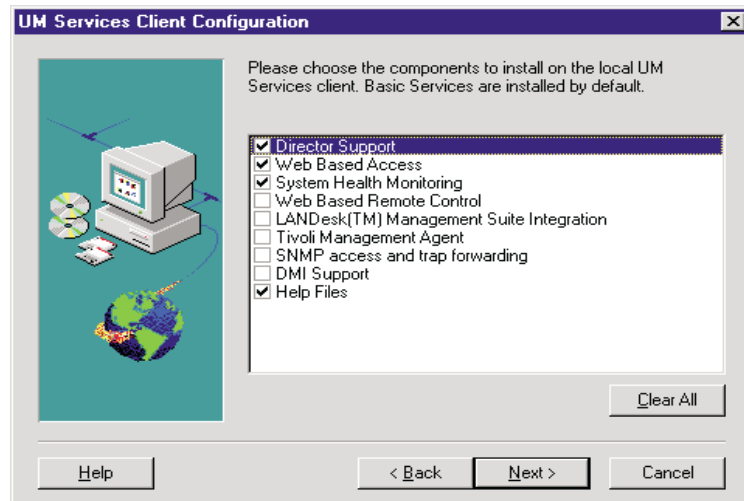
- OS/2 requires 16 MB RAM
- SCO UnixWare 7.1.1 and Linux Red Hat require a minimum of 64 MB RAM and 16 MB RAM available hard drive space on the mount point

Installing the Windows UM Services Client

From the **Select Components** window, do the following.

1. Click **Client**.

The **UM Services Client Configuration** window opens.



2. Select the check box beside any of the components that you want to install on the client system.

The following optional components are available. The components that are selected by default are indicated as such:

Director Support (default)

Director Support is an additional configuration option for the client installation only. IBM Director is an advanced Intel processor-based workgroup hardware manager, with centralized client and group management console and server services. Selecting this feature enables the client system to be managed in a Director environment by installing UM Services on this system.

Web Based Access (default)

Web Based Access offers a convenient Java-based tool for managing a client system and for viewing the CIM-based inventory data. If you install Web Based Access, a hypertext transport protocol (HTTP) DAEMON is installed and requires that a user name and password be typed during the installation. The user name and password limit access to the HTTP DAEMON. With Web-Based Access that is installed on the client system, the client system can be managed from any remote computer with a supported Web browser. The Web browser is the only software that is needed on the remote system.

System Health Monitoring (default)

System Health Monitoring provides active monitoring of critical system functions, such as disk space available, SMART drive alerts, system temperature, fan functionality, power supply voltage, and system cover removal (dependent upon the hardware options of a selected managed system). You can use System Health Monitoring to detect system problems early, before system failures occur. System administrators are notified of a system problem by a CIM event, and SNMP trap (SNMP traps are available only if **SNMP access and trap forwarding** is also selected), or and SMS status message (Microsoft SMS 2.0 only). Critical problems also cause a message to be displayed on the monitor of the client system.

Web Based Remote Control

Web Based Remote Control enables a remote system administrator using a Web browser or MMC console to take control of the client system desktop, enhancing the administrator's ability to diagnose system problems and troubleshoot the system.

Note: You must install the Web Based Access component to install the Web Based Remote Control component.

LANDesk™ Management Suite Integration

LANDesk Management Suite Integration installs the Intel Common Base Agent on the client system. This enables the system administrator to use UM Services with LANDesk Management Suite.

Tivoli Management Agent

Tivoli Management Agent installs support on the client system that enables it to be managed by the Tivoli Enterprise system-management platform.

SNMP Access and trap forwarding (default)

This feature enables CIM information to be accessed from systems that use the simple network management protocol (SNMP). If System Health Monitoring is enabled, this option also enables System Health to forward CIM events as SNMP traps. This component requires that you have the SNMP service (provided with the operating system) installed on the endpoint. If the SNMP service is not installed, the system prompts you to insert the operating system installation media and install SNMP during the UM Services installation.

DMI Support

Selecting this component installs the Desktop Management Interface (DMI) compliant Service Provider. When enabled, this feature maps a managed system CIM data and events to DMI.

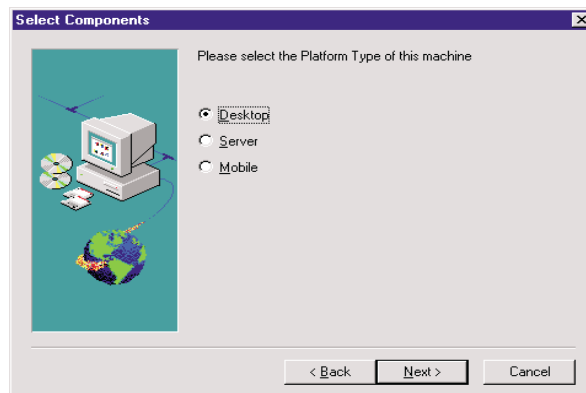
Help Files (default)

Selecting this component installs online documentation. Do not select this option if you are concerned about disk space or do not need online documentation installed on every client system.

3. Click **Next** to continue.

The **Choose Destination Location** window opens.

4. Click **Next** to accept the default directory (**c:\Program Files\UMS**), or click **Browse** to select a different directory.
5. If you did not select to install **DMI Support** in step 10, go to step 14. If you selected **DMI Support**, the **DMI Platform** window opens.



Select the type of platform that you are installing the DMI support to. Click **Next** to continue.

6. To use the UM Services console to manage this system, you must first provide a valid user ID and password before being allowed access to the system. In the **User ID** field, type the user ID. Then type the password in the **Password** field, and type the password again in the **Confirm Password** field.

Note: The user ID and password are case sensitive.

Then, select a TCP/IP port that is used to access the UM Services console. The default port is 411. If this port is not available, you

can select port number 6411, 6500, 6600, or 6611. Make sure that other TCP/IP applications do not use the selected port.

7. Click **Next** to continue.
8. If you selected **SNMP access and trap forwarding** from the UM Services Client Configuration menu and do not have the SNMP network service installed, the UM Services installation program will prompt you with an SNMP installation query.
 - Click **No** to continue with the UM Services installation without installing the SNMP network service.
 - Click **Yes** to install the SNMP network service on the server. The **Installing SNMP** window and the **Network** window opens. Follow the instructions for installing SNMP. When the Windows operating system prompts you to restart the system, click **No**. In the **Installing SNMP** window, click **Next** to return to the UM Services installation program.
9. When the system asks you if you want to place a UM Services icon on the start menu, click **Yes** or **No**.
10. When the system asks you if you want to install files for remote control, click **Yes** or **No**.
11. When the system asks you if you require user authorization for remote control window access, click **Yes** or **No**.

The installation program begins installing the necessary files.
12. When the Director Installation Complete window opens, Click **Finish**.
13. Restart the computer now or later. If you click **Yes**, the system shuts down and restarts immediately. If you click **No** the UM Services installation program closes. However, you must restart and log in to the system to begin using UM Services.

Using the UM Services Client Attended Installation for OS/2

To install the UM Services Client software on an OS/2 3.0, 4.0, or Warp Server for eBusiness system, do the following.

-
1. Insert the *IBM Director with UM Services* CD-ROM into the CD-ROM drive of the system.
 2. Change the directory to the *x:\Director\os2* subdirectory, where *x*: is the drive letter of the CD-ROM drive.
 3. Run **setup.cmd** to start the installation utility.
 4. The default location of the UM Services Client files is displayed in the **Directory to Install** from field. Unless you have moved the files to another location, simply accept the default. Otherwise enter the drive letter and file path location where the Client files are located.

A subdirectory, **\SwPkInst**, is automatically created in the selected directory, where software distribution packages will be placed on the system for installation.

5. The default target location for the Client files is **c:\TivoliWg**. If you want to install the files in another location, replace the default drive and file path with the alternative location.
6. Select the **remote control Agent** option if you want to enable the desktop of the local system to be taken over from a remote location. Refer to the Tivoli IT Director section, “Remote Control,” for more information.
7. Select **Install**. The files are copied to the specified directory. You can cancel the installation at any point by selecting **Cancel**.
8. You should then see the **Network Driver Configuration** dialog. Enter a name for the system in the **System Name** field. The IBM Director administrator uses this name to identify this system on the network.
9. Click on one of the available network drivers the managed system uses to communicate with the IBM Director management server.

When you select **NetBIOS**, a default network address is assigned. You can change this address, but ensure that the name you specify is 1 to 12 characters in length and unique on the network, otherwise, the managed system cannot start properly. Note that this address is case sensitive.

-
10. Select **Driver Enabled** to activate the network driver when the system starts. If the system has multiple network drivers available, you can select another driver at this point and repeat the steps for this dialog.
 11. The **Network Time-Out** value specifies the number of seconds the IBM Director management server attempts to establish communication with this system if it is not responding. You may not need to change the default setting.
 12. The **Require User Authorization for Screen Access** option enables you to specify whether a remote user can access, and take over control of, the local system without the local user's permission. If this option is enabled and a IBM Director administrator attempts to use remote control to access the local system, a message window is displayed on the local system indicating that a remote user is attempting remote control access. You can then allow or disallow access. Refer to the *IBM Director User's Guide* section, "Remote Control" for more information on using this service.
 13. Select **Enable Wake on LAN** option to enable IBM Director to wake up a managed system that may be in "sleep" mode before performing tasks on that system. The managed system must have a network card that supports this feature.
 14. When you have finished, click **OK** to save the settings.
 15. The installation utility displays the changes that must be made to the **config.sys** and **startup.cmd** files. Select **Yes** if you want the installation utility to automatically include the configuration entries in these files. Select **No** to store the changes in **config.new** and **startup.new** instead.

Note: The changes must be included in **config.sys** and **startup.cmd** for the IBM Director managed system to run correctly. If you select **No**, you must add the entries manually.
 16. Installation is now complete, click **OK** to save the settings.

Using the UM Services Client Unattended Installation for OS/2

IBM Director supports unattended installations, meaning that you do not have to be present to provide responses to the various prompts during the installation process. Instead, a response file is automatically read, and the installation proceeds normally.

The response files for the unattended installation for OS/2 are included in the OS/2 language subdirectory. For example, the sample English language response file, `DirServ.rsp`, is located in the `x:\Director\win32\install\files\NfD\Agent\OS2\en\` subdirectory, where `x:` is the drive letter of the CD-ROM drive.

Comments within the response files begin with a semicolon in the first column. All entries can be changed. The response file contains comments that detail the usage of each entry.

To launch an unattended installation of the OS/2 Client, do the following:

1. Copy and modify the sample response file (**DirAgent.rsp**).
2. Change the directory to the `x:\win32\install\files\NfD\Agent\OS2\` subdirectory, where `x:` is the drive letter of the CD-ROM drive.
3. Run **setup.cmd** to start the installation utility:
install.exe /R:filename (where *filename* is the fully-qualified response file)

Installing the UM Services Client for NetWare

Notes:

- Do not install the UM Services Client on a NetWare system running Netfinity Manager. Netfinity Manager has to be commented out of **Autoexec.ref**.
- UM Services Client is only supported in NetWare 4.10, 4.11, 4.2, 5.0 and 5.1.
- The NetWare client system for the UM Services Client must be currently logged into the Novell NetWare Server.

To install the UM Services Client software on a Novell NetWare system:

1. Insert the *IBM Director with UM Services* CD-ROM into the CD-ROM drive of the system.
2. Change the directory to the *x:\Netware* subdirectory, where *x*: is the drive letter of the CD-ROM drive.
3. Run **setup.bat**.
4. Click **Next** on the **Welcome** window.
5. The End User License Agreement window opens. Click **Yes**.
6. From the **Choose Destination Location**, select the appropriate drive that is mapped to the **sys volume** of the targeted Novell server. Click **Next**.
7. The target location for the client files is the **\tivoliwg** directory.
8. It copies the necessary files, and adds the following lines to the Autoexec.ncf file:

```
;*****Tivoliwg IT Director Agent*****  
Search add sys:tivoliwg  
load twgipc  
;*****Tivoliwg IT Director Agent*****
```

9. The final window is displayed, listing several manual tasks the user must perform before this application is used:
 - Type the following:
Search add sys:tivoliwg
 - Configure the UM Services Client by loading **twgipccf**
 - Start the client by loading **twgipc**
10. Installation is now complete. The client automatically runs on the next Novell server boot.

Installing UM Services Client for SCO UnixWare

To install the UM Services Client on a SCO UnixWare system, you must install both the Server Extensions and the UnixWare Lightweight Client.

Before installing the UM Services Client for SCO UnixWare, these conditions must first be met:

- SCO UnixWare 7.1 or 7.1.1 is installed on the client system.
- SCOUNixWare 7.1 Patch ptf7441a must be applied to the client system.

To install the UnixWare Lightweight Agent for each SCO UnixWare Client, do the following.

1. At the SCO UnixWare system you want to manage, open the command line program.
2. Type **#mount /cdrom** and then hit **Enter**.
3. Type **#cp /cdrom/sco7.1/uagent.pkg /temp** and then hit **Enter**.
4. Type **#pkgadd -d /temp/uagent.pkg** and then hit **Enter**.

SCO UnixWare installs the IBM Director UnixWare Lightweight Agent.

5. Type **#umount /cdrom** and then hit **Enter** to finish the installation.

IBMIBM Director Director will recognize this SCO UnixWare system as a client on the next discovery. Unix Agents are secure by default. Consequently, when they are first discovered by the IBM Director Management Server, the managed client name appears with a lock icon.

To gain access, right-click on the locked system and select, **Request Access**, from the pop-up menu. Enter the appropriate user name and password. Click **OK**.

Installing UM Services Client for Linux Red Hat

To install the Director management agent software on a Red Hat Linux 6.1 system:

1. Insert the *IBM Director with UM Server Extensions* CD into the CD-ROM drive.
2. Change the directory to *X:/Director/Linux* where *X* is the CD-ROM drive label

-
3. Copy the ITDAgent-3.10-1.i386.RPM package to a temporary directory.
 4. Logged in as **root**, from the temporary directory, type:

```
/bin/rpm -i ITDAgent-3.10-1.i386.rpm
```

The agent is installed in the /opt/tivoliwg directory.
 5. After the installation is complete, the agent starts automatically, and the system is ready for discovery by a IBM Director server.

Starting IBM Director

During installation, if you clicked **Yes** to create icons on the Start menu, you can start IBM Director locally from the Windows **Start** menu. To start IBM Director from the local system, click **Start** → **Programs** → **Director** → **Management Console**.

The IBM Director Console opens with the Administrator login panel. The panel includes the location of the Director server and User ID. Type in the password for the User ID and click **OK**.

Uninstalling IBM Director

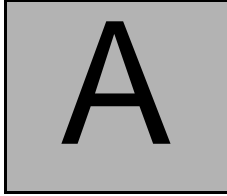
Before you remove IBM Director, if you have the UM Server Extensions installed, you must first uninstall the extension tools. For information on the UM Server Extensions, refer to the *UM Server Extensions User's Guide*.

To remove IBM Director:

1. Click **Start** → **Settings** → **Control Panel** → **Add/Remove Programs**. Then select **Director**.
2. The system displays a message that reminds you that IBM Director must be closed before you can continue.
3. The system displays a message that verifies that you want to delete the configuration data and database content.

The uninstallation program is automated and prompts you when the process is finished.

-
4. Restart the computer now or Restart later. If you choose **Restart Now**, the system shuts down and restarts immediately.



Upgrading to IBM Director 2.2

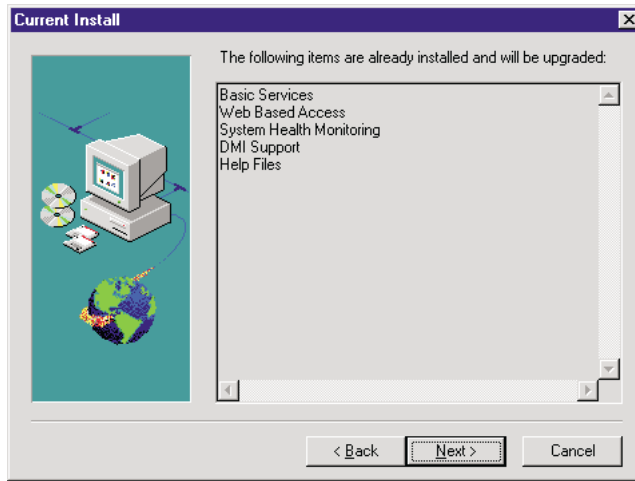
You can upgrade previous versions of Netfinity Director to IBM Director, version 2.2. The installation program checks for a previous version of IBM Director and, depending on the type of installation, upgrades the necessary IBM Director components.

Upgrading the IBM Director Server

You follow the same steps to upgrading the Server as you would with installation. You begin by inserting the *IBM Director with UM Server Extensions* CD into the CD-ROM of the Director system you are upgrading. Follow steps 2 through 4 on page 4 of the installation section.

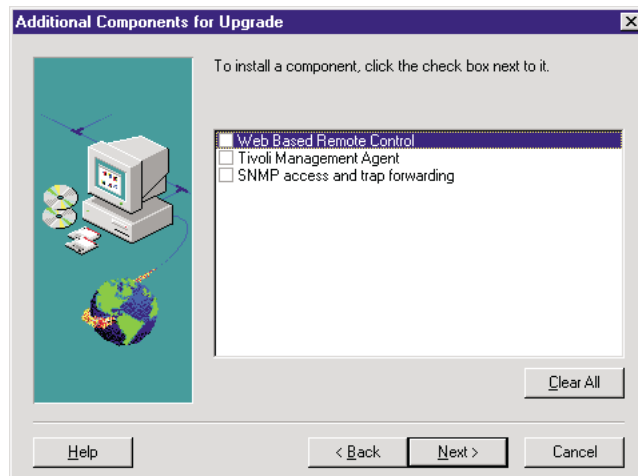
To upgrade the Director Server to version 2.2, do the following.

1. Select **Server** from the **Select Components** window.
Installation detects a previous installation. Click **Yes** from the Question pop-up to proceed with the upgrade.
2. The **Current Install** window opens.



Items that were installed with the previous version are listed here. These items are upgraded with the new version. Click **Next** to continue.

3. The **Additional Components for Upgrade** window opens.



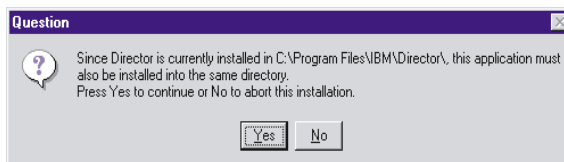
Features that are either new to Director or were not installed in the previous version are listed here. Check the box beside each feature you wish to add.

Click **Next** to continue.

4. Click **Yes** to the Add UM Services Icons pop-up for the additional menu choices provided with the upgrade.
5. The upgrade program detects the previous installation path. Click **Yes** to continue.
6. The installation continues with steps 10 through 14 on page 11. The upgrade program detects the current Director database. Click **Yes** to use the database with the upgrade.
7. Select **Yes, I want to restart my computer now**. Click **Finish** to complete the upgrade process and to restart the system.

Upgrading the IBM Director Console

After the Welcome and End User License Agreement windows, select **Console** from the **Select Components** window. Installation detects the previous version of the IBM Director Console and this prompt appears.



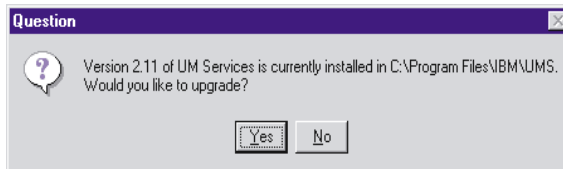
Click **Yes** to upgrade the console. The upgrade follows the previous installation path upgrading existing software, removing obsolete files and directories, and installing the new console components.

Restart the computer now or later. If you choose **Restart Now**, the system shuts down and restarts immediately. If you choose **Restart Later**, the UM Services installation program closes. However, you must restart and log in to the system to begin using IBM Director.

Upgrading the IBM Director Client

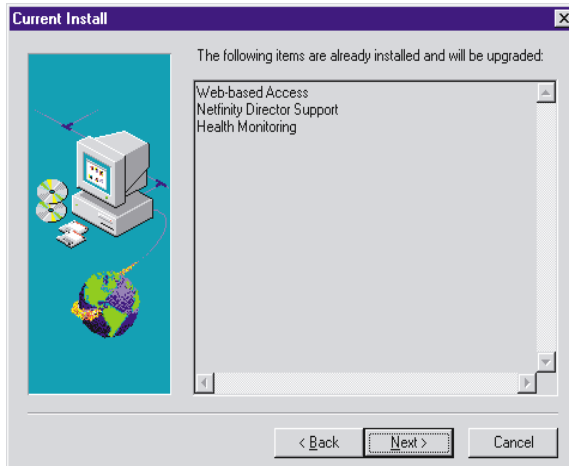
To upgrade the IBM Director Client for a selected system, do the following:

1. After the Welcome and End User License Agreement windows, select **Client** from the **Select Components** window. Installation detects the previous version of the IBM Director Client and the upgrade prompt appears.



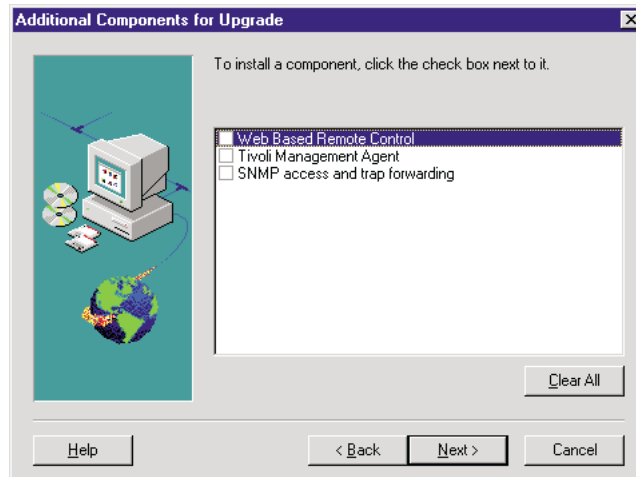
Click **Yes** to begin.

2. Installation detects the client components from the previous version of the installed UM Services client. The Current Install window opens.



Installation upgrades the client components listed in this window. Click **Next** to continue.

3. The Additional Components for Upgrade window opens.



Select additional components to add to the upgraded components of the UM Services Client. Click **Next** to continue.

4. Depending on which additional components you add, the upgrade program will prompt you for additional responses. For more information about these prompts, see “Installing the UM Services Client for IBM Director” on page 14.
5. A prompt to add UM Services icons appears. If you have icons from the previous version, clicking **No** will not remove the icons. Clicking **Yes** will not add additional icons to those previously installed.
6. The program now upgrades the existing components and installs the selected new components. Restart the computer now or later. If you choose **Restart Now**, the system shuts down and restarts immediately. If you choose **Restart Later**, the UM Services upgrade program closes. However, you must restart and log in to the system to begin using IBM Director.

Index

A

- Account Information window 11
- agent software
 - installing on Netware 23
 - installing on OS/2 20

C

- console files, installing 14

D

- database, selecting a 11
- Director Database Configuration window 11
- DMI Mapper 8, 18

H

- hardware requirements, IBM Director Console 2
- hardware requirements, IBM Director Management Server 2
- hardware requirements, UM Services Client 3

I

- IBM Director Console, supported systems 1
- IBM Director Installation
 - console files 14
 - server files 5
- IBM Director Management Server, supported

- systems 1
- installing agent software on Netware 23
- installing agent software on OS/2
 - attended installation 20
 - unattended installation 23
- installing IBM Director
 - Console 14
 - Server 5

L

- LANDesk Management Suite Integration 7, 18

N

- Network Driver Configuration window 12
- network drivers, configuring 12

P

- password 9
- password, setting 9

S

- server files
 - installing 5
- SNMP access and trap forwarding 8, 18
- System Health Monitoring 7, 17

T

- Tivoli Management Agent 7, 18

U

UM Services Client, supported systems 2
uninstalling IBM Director 26
user ID, setting 9

W

Web-based Access 6, 17
Web-based Remote Control 7, 18



Part Number:
File Number: